

**Wood-Mizer® Moulder Planer  
Parts Manual**

---

**MP260EA13U-V  
MP260EB13U-V**

**rev. B1.01  
rev. B1.01**

---

***Safety is our #1 concern!***

*Form #2411-US*



**WARNING! Read and understand this manual before using this machine.**

**California**  
Proposition 65 Warning



**WARNING:** Breathing gas/diesel engine exhaust exposes you to chemicals known to the State of California to cause cancer and birth defects or other reproductive harm.

- Always start and operate the engine in a well-ventilated area.
- If in an enclosed area, vent the exhaust to the outside.
- Do not modify or tamper with the exhaust system.
- Do not idle the engine except as necessary.

For more information go to **[www.P65warnings.ca.gov](http://www.P65warnings.ca.gov)**.



**WARNING:** Drilling, sawing, sanding or machining wood products can expose you to wood dust, a substance known to the State of California to cause cancer. Avoid inhaling wood dust or use a dust mask or other safeguards for personal protection.

For more information go to **[www.P65Warnings.ca.gov/wood](http://www.P65Warnings.ca.gov/wood)**.

**Active Patents assigned to Wood-Mizer, LLC**

Wood-Mizer, LLC has received patents that protect our inventions which are a result of a dedication to research, innovation, development, and design. Learn more at: [woodmizer.com/patents](http://woodmizer.com/patents)

**©2021 Wood-Mizer LLC**

Printed in the United States of America, all rights reserved. No part of this manual may be reproduced in any form by any photographic, electronic, mechanical or other means or used in any information storage and retrieval system without written permission from

**Wood-Mizer, LLC**  
**8180 West 10th Street**  
**Indianapolis, Indiana 46214**

**SECTION 1 GENERAL INFORMATION**

1.1 How To Use The Parts List..... 1-1

**SECTION 2 OVERVIEW**

2.1 MP260 Components ..... 2-1  
 2.2 MP260 Additional Part Kit ..... 2-2

**SECTION 3 MECHANICAL ASSEMBLY**

3.1 Covers ..... 3-1  
 3.2 Table MP260 ..... 3-2  
 3.3 Right Spindle Assembly ..... 3-4  
 3.4 Bottom Cutterhead ..... 3-6  
 3.5 Infeed and Outfeed Fences ..... 3-7  
 3.6 Feed Assembly ..... 3-8  
 3.7 Drive Shaft Assemblies ..... 3-9  
 3.8 Slide Bearing Assembly ..... 3-10  
 3.9 Tension Plate ..... 3-11  
 3.10 Cutterhead Assembly (Upper) ..... 3-12  
 3.11 Bearing Housing ..... 3-13  
 3.12 Right Guard ..... 3-14  
 3.13 Sawdust Outlet Guard ..... 3-15  
 3.14 Side Guard ..... 3-16  
 3.15 Left Guard ..... 3-17  
 3.16 Sawdust Outlet Guard ..... 3-18  
 3.17 Top Cover ..... 3-19  
 3.18 Sawdust Outlet ..... 3-20  
 3.19 V-belt Cover ..... 3-21  
 3.20 Spindle Moving Assembly ..... 3-22  
 3.21 Pressure Roller Assembly II ..... 3-24  
 3.22 Left Spindle Assembly ..... 3-25  
 3.23 Clamp Roller Assembly ..... 3-26  
 3.24 Side Feed Assembly ..... 3-27  
 3.25 Up/Down Feed Assembly ..... 3-28  
 3.26 Up/Down Feed Scale ..... 3-30  
 3.27 Moveable Cutter Handle ..... 3-31  
 3.28 Up/Down Feed Handle ..... 3-32  
 3.29 Feed Chain Tensioner ..... 3-33  
 3.30 Feed Chain Slide ..... 3-34  
 3.31 Rod Set ..... 3-35  
 3.32 Moving Plate ..... 3-36

**SECTION 4 MOTOR KITS**

4.1 Motor Kit ..... 4-1  
 4.2 Side Cutter Motor Assemblies ..... 4-2  
 4.3 Horizontal Upper Cutter Drive ..... 4-4  
 4.4 Horizontal Bottom Cutter Drive ..... 4-5

# Table of Contents

# Section-Page

4.5	Feed Drive .....	4-7
4.6	Electric Box Bracket .....	4-8
4.7	Electrical Box, MP260EA .....	4-9
4.8	Electrical Box, MP260EB .....	4-10

## SECTION 5 DECALS

5.1	Decals MP260 .....	5-1
-----	--------------------	-----

## SECTION 6 OPTIONS

6.1	Infeed/Outfeed Tables .....	6-1
6.2	Castors .....	6-3
6.3	Bushing Kit .....	6-4

## SECTION 1 GENERAL INFORMATION

### 1.1 How To Use The Parts List

- Use the table of contents to locate the assembly that contains the part you need.
- Go to the appropriate section and locate the part in the illustration.
- Use the number pointing to the part to locate the correct part number and description in the table.
- Parts shown indented under another part are included with that part.
- Parts marked with a diamond (◆) are only available in the assembly listed above the part.

**See the sample table below.**

Sample Part #A01111 includes part F02222-2 and subassembly A03333.

Subassembly A03333 includes part S04444-4 and subassembly K05555.

*The diamond (◆) indicates that S04444-4 is not available except in subassembly A03333.*

Subassembly K05555 includes parts M06666 and F07777-77.

*The diamond (◆) indicates M06666 is not available except in subassembly K05555.*

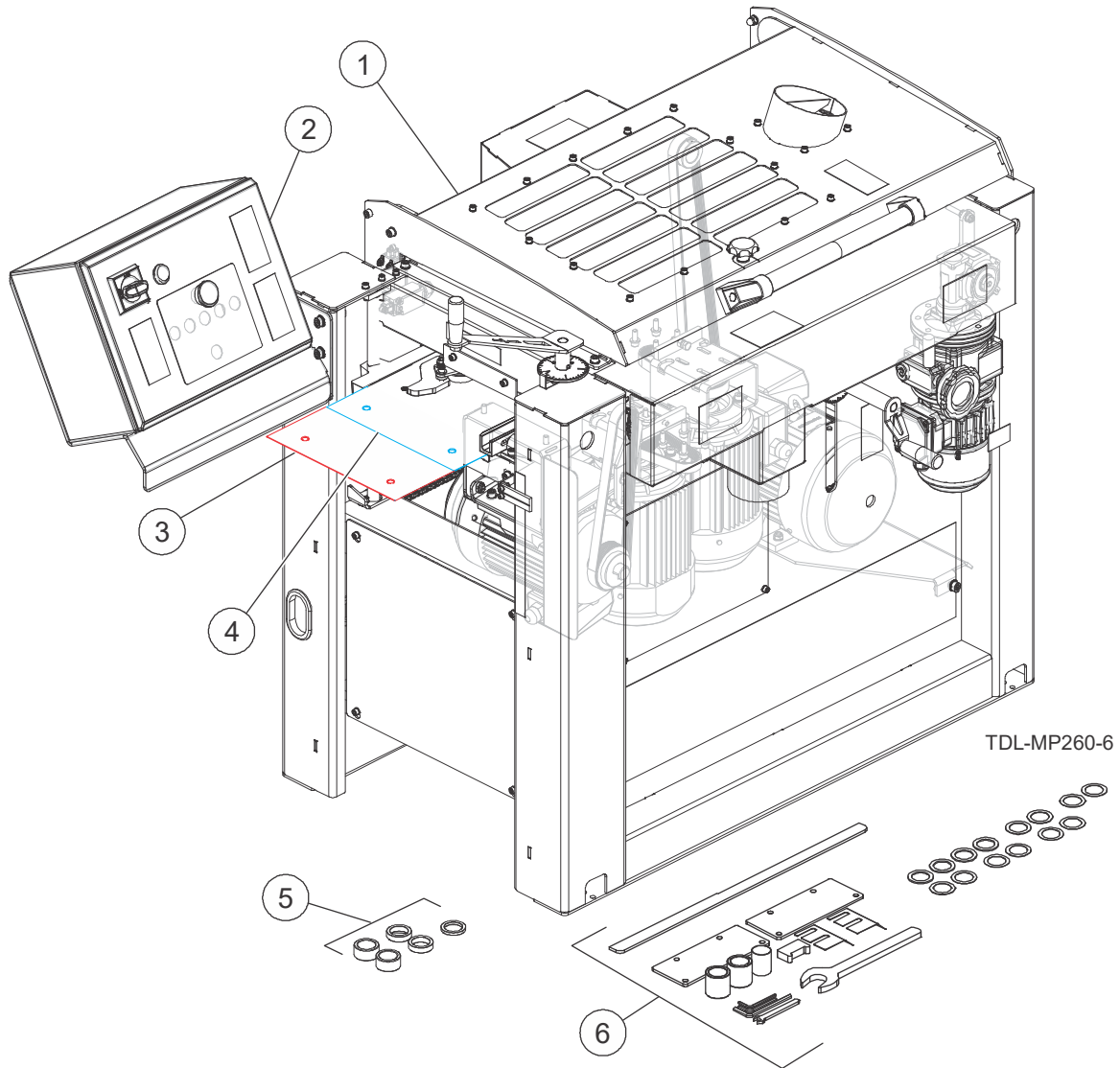
REF	DESCRIPTION (◆ Indicates Parts Available in Assemblies Only)	PART #	QTY.	
	<b>SAMPLE ASSEMBLY, COMPLETE (INCLUDES ALL INDENTED PARTS BELOW)</b>	A01111	1	
1	Sample Part	F02222-22	1	
	Sample Subassembly ( <i>Includes all indented parts below</i> )	A03333	1	
2	Sample Part (◆ <i>Indicates part is only available with A03333</i> )	S04444-4	1	◆
	Sample Subassembly ( <i>Includes all indented parts below</i> )	K05555	1	
3	Sample Part (◆ <i>Indicates part is only available with K05555</i> )	M06666	2	◆
4	Sample Part	F07777-77	1	

**To Order Parts:**

- Use your online Customer Gateway Account to find and order parts.
- From the continental U.S., call **1-800-525-8100** to order parts. Have your customer number, serial number (VIN when applicable), and part numbers ready when you call.
- From international locations, contact the Wood-Mizer distributor in your area for parts.

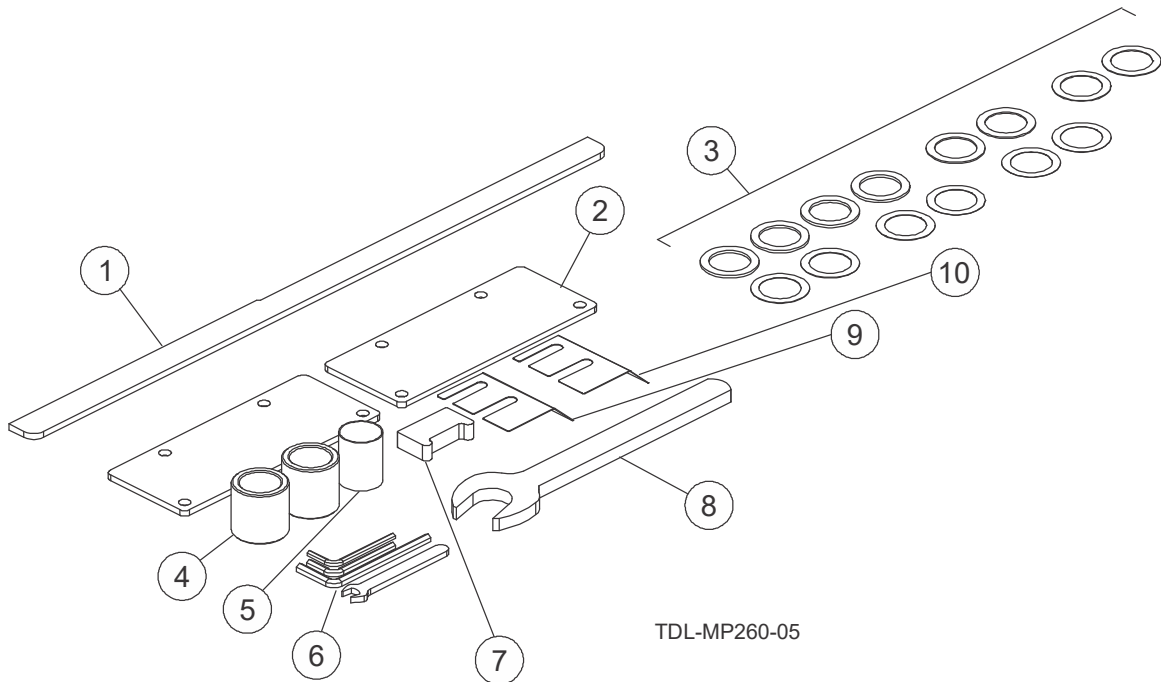
## SECTION 2 OVERVIEW

### 2.1 MP260 Components



REF	DESCRIPTION (♦ Indicates Parts Available in Assemblies Only)	PART #	QTY.
	<b>MP260 PRO M4-SIDED MOULDER 230V 1P W/ FD</b>	MP260EA13U-V-US	1
1	Assy, MP260 Mechanical Assembly <a href="#">See Section Mechanical Assembly</a>	537000-US	1
2	Assy, Motor Kit For MP260AB	537021-6U-US	1
3	Plate, Shim 1	537576-1-US	1
4	Plate, Shim 2	537577-1-US	1
5	Kit, MP260 Bushing (Optional) <a href="#">See Section Options</a>	117362	1
6	Assy, MP260 Additional Part Kit	537645-US	1

## 2.2 MP260 Additional Part Kit

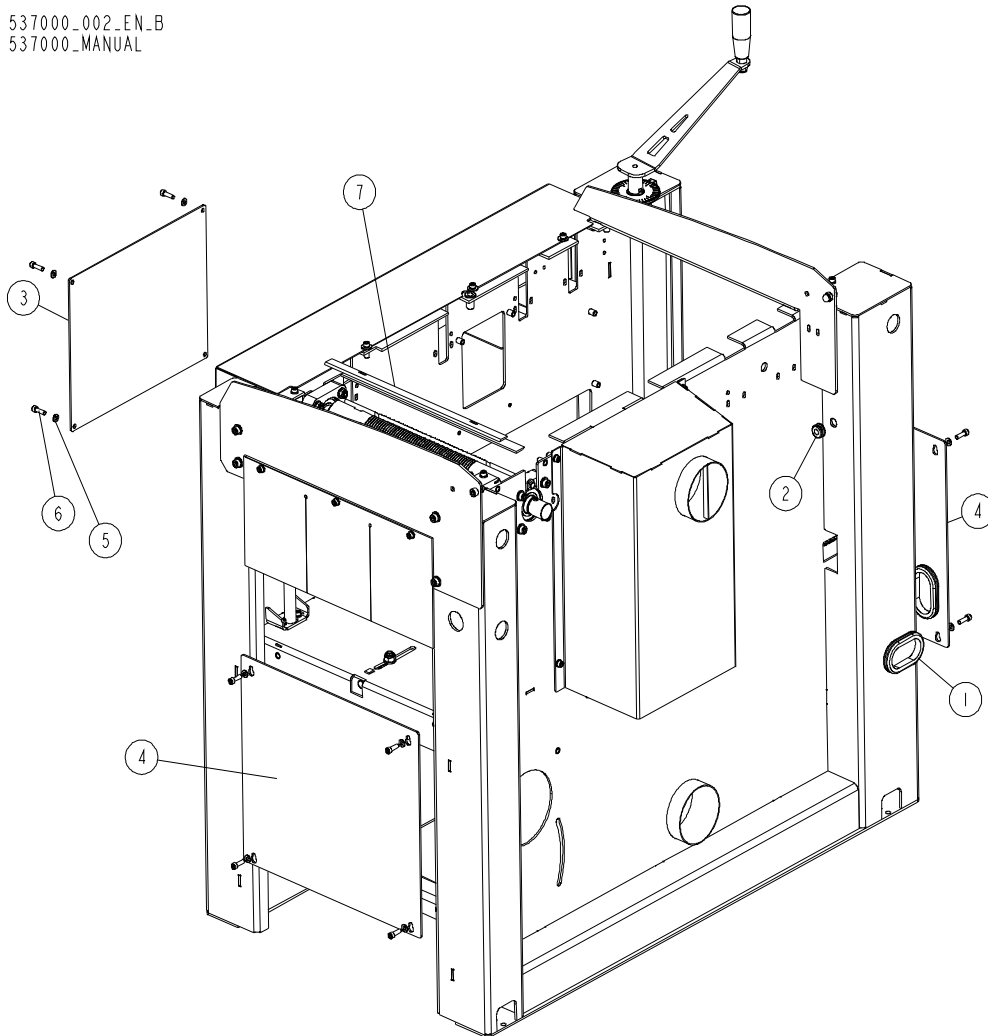


REF	DESCRIPTION (♦ Indicates Parts Available in Assemblies Only)	PART #	QTY.
	<b>ASSY, MP260 ADDITIONAL PART KIT</b>	537645-US	
1	Bar, Regulating bar	360-911	1
2	Plate, Additional Plate MP260	537646-1-US	1
3	Kit, MP Shims	117361	1
	Washer 30/42-2 FE/ZN5 DIN 988	F81069-1	4
	Washer 30/42-1 FE/ZN5 DIN 988	F81069-2	2
	Washer 30/42-0.5 FE/ZN5 DIN 988	F81069-3	2
	Washer 30/42-0.3 FE/ZN5 DIN 988	F81069-4	2
	Washer 30/42-0.2 FE/ZN5 DIN 988	F81069-5	2
	Washer 30/42-0.1 FE/ZN5 DIN 988	F81069-6	2
4	Bushing, 1-5/8ODx1.183IDx1.583	535848-1-US	1
5	Bushing, 1.181IDx1.249ODx1.566	537654-US	1
6	MP160 Wrench Kit	535185-US	1
	Wrench, 5mm Hex	092915-US	1
	Wrench, 4mm Hex	093368-US	1
	Wrench, 10mm Flat	535177-1-US	1
	Wrench, 6mm Hex	535186-US	1
7	Plate, Knife Alignment Tool	534770-US	1
8	Wrench, 30mm Flat	537649-US	1
9	Bracket, Cutter Guard	533502-US	1
10	Bracket, Cutter Guard	537648-US	1

## SECTION 3 MECHANICAL ASSEMBLY

### 3.1 Covers

537000\_002\_EN.B  
537000\_MANUAL

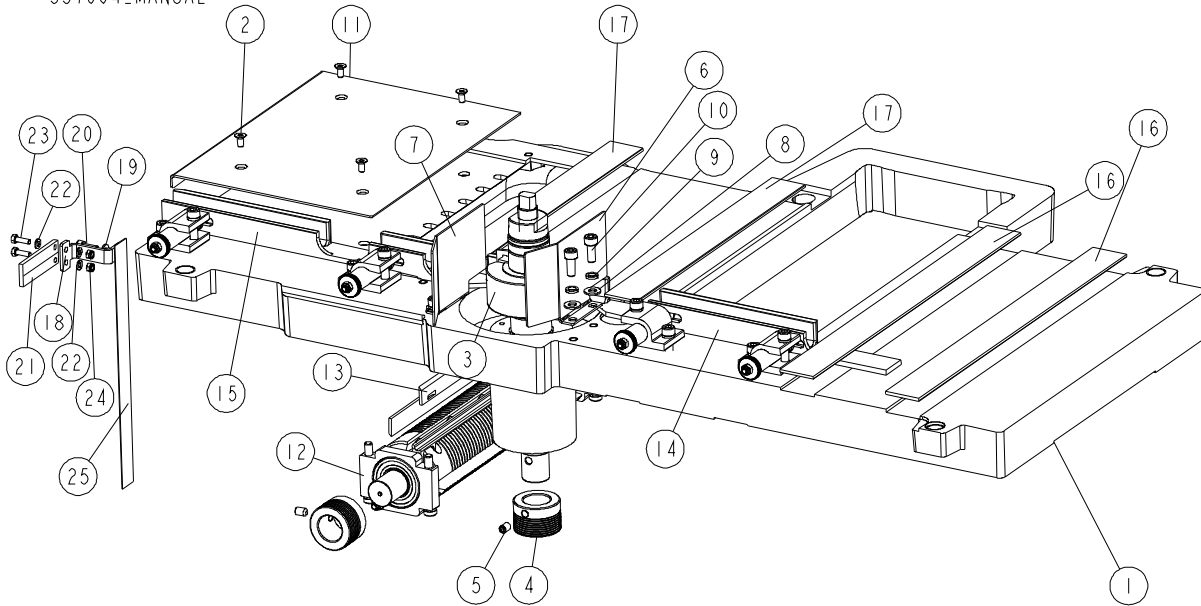


REF	DESCRIPTION (♦ Indicates Parts Available in Assemblies Only)	PART #	QTY.
1	Grommet, Rubber	087065	2
2	Grommet, Rubber 3/8 ID	025248	1
3	Front Small Cover	537567-1-US	1
4	Plate, Side	533096-1-US	2
5	Washer, M6 Flat Class 4	F05026-1	12
6	Screw, M6-1 x 20 SHC	F05020-15	12
7	Knife, Planer, 260upr/360lwr 410mm notch (Upper cutter, single knife)	TPK410.20MP	2



### 3.2 Table MP260

537004\_001\_EN\_B  
537004\_MANUAL



REF	DESCRIPTION (♦ Indicates Parts Available in Assemblies Only)	PART #	QTY.
-	<b>ASSEMBLY, MP260 MECHANICAL</b>	537004-US	1
1	Table MP260	260-512B	1
2	Screw, M6-1.0x12mm HSFH, 10.9 Zinc	F81001-54	4
3	Right Spindle Assembly <a href="#">See Section 3.3</a>	537135-US	1
4	Pulley, 8PJx48mmx28mm	533586	2
5	Screw, M8-1.0x12mm SHSS Cup Point	F81002-105	2
6	Bracket, Fence	537006-US	1
7	Bracket, Fence2	537007-US	1
8	Washer, M8 Flat	F05026-4	5
9	Washer, M8 Split Lock	F05011-45	4
10	Bolt, M8x1.25x20mm SHCS	F05005-150	4
11	Bracket, Table Plate 1	537563-1-US	1
12	Assy, Cutterhead; 72D x 300L mm; 4kn <a href="#">See Section 3.4</a>	537568	1
13	Knife, Planer; HSS; 300mm (11.8") L w/ Notch	TPK300.20MP	2
14	Fence 1, Assembly <a href="#">See Section 3.5</a>	537570	1
15	Fence 2, Assembly <a href="#">See Section 3.5</a>	537572	1
16	Slide Plate 1	537573-US	2
17	Slide Plate 2	537574-US	2
18	Bracket, Indicator, Scale	537559-1	1
19	Washer, M5 Flat SS PK/100	F05011-129	2
20	Screw, M8-1.25x16 SHC	F05021-10	1
21	Indicator, Blade Width Scale	094821	1

# 3 Mechanical Assembly

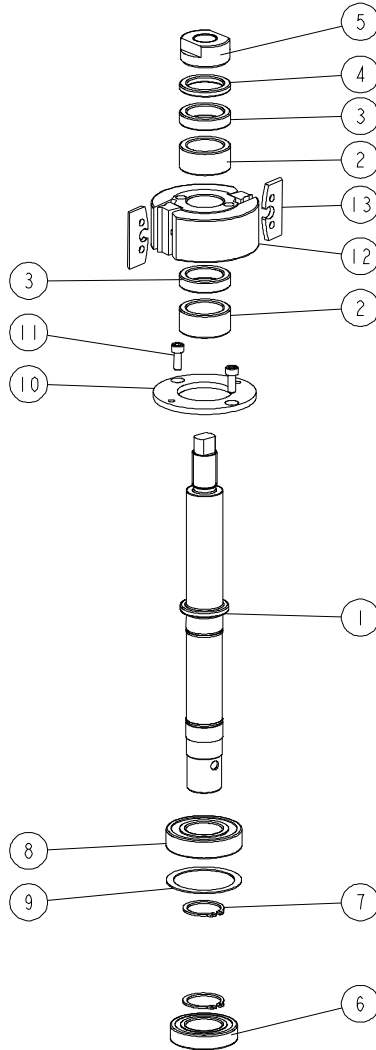
## Covers

---

REF	DESCRIPTION (♦ Indicates Parts Available in Assemblies Only)	PART #	QTY.	
22	Washer, M5 Flat SS PK/100	F05011-129	2	
23	Screw, M5-0.8x16mm SHCS SS PK/50	F05004-259	2	
24	Nut, M5-.8 Class 8 Hex Nylock	F05027-3	2	
25	Decal, Vertical Scale	533579-US	1	

### 3.3 Right Spindle Assembly

537135\_001\_EN  
537135\_MANUAL



REF	DESCRIPTION (♦ Indicates Parts Available in Assemblies Only)	PART #	QTY.
-	<b>RIGHT SPINDLE ASSEMBLY</b>	537135-US	1
1	Shaft, MP260	537134-US	1
2	Bushing, 30/42-20.2 Zinc-plated	533541-1-US	2
3	Bushing, 30/42-10 Zinc-plated	533539-1-US	2
4	Bushing, 30/42-5.2 Zinc-plated	533540-1-US	1
5	Bushing, 1-5/8xM20-1.5x25/32	535886-1	1
6	Bearing, 6006 2rsr	096191	1
7	Outside Retaining Ring Z30 Pn-m/85111 Din 471	F81090-23	2
8	Bearing, 6206 2rsr P6 Rolling (Fag, Nsk, Skf)	100787	1
9	Plate, Washer MP260	533543-US	1
10	Plate, Clamping	533542-1-US	1

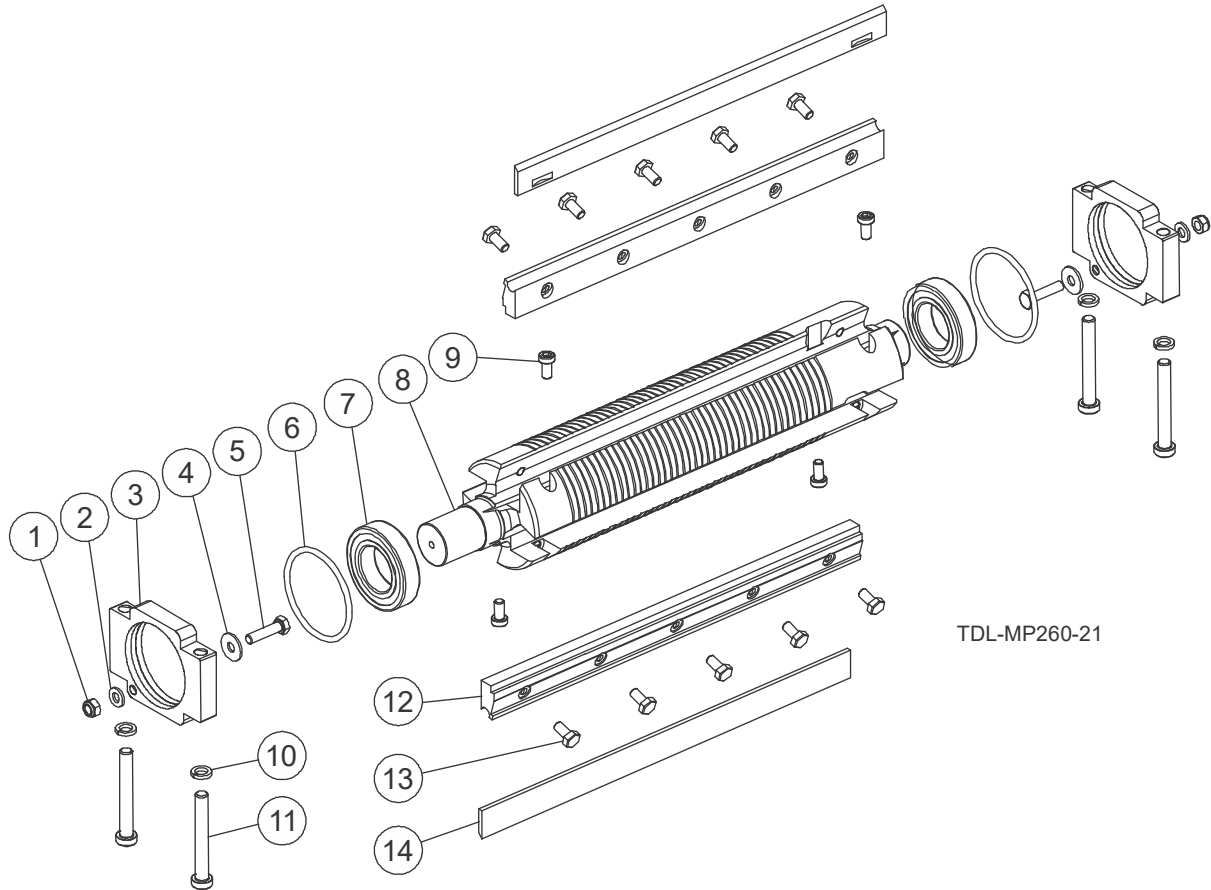
# 3 Mechanical Assembly

## Covers

---

REF	DESCRIPTION (♦ Indicates Parts Available in Assemblies Only)	PART #	QTY.	
11	Screw, M6-1.0 x 16mm SHCS	F05004-206	2	
12	Cutterhead, 88D x 40L x 30B mm; Side 2kn	240-010	1	
13	Knives, Cutter ( <b>set of 2</b> )	TPK50.024.4TB	1	
	Wedge	KIL-TB90-92S	1	

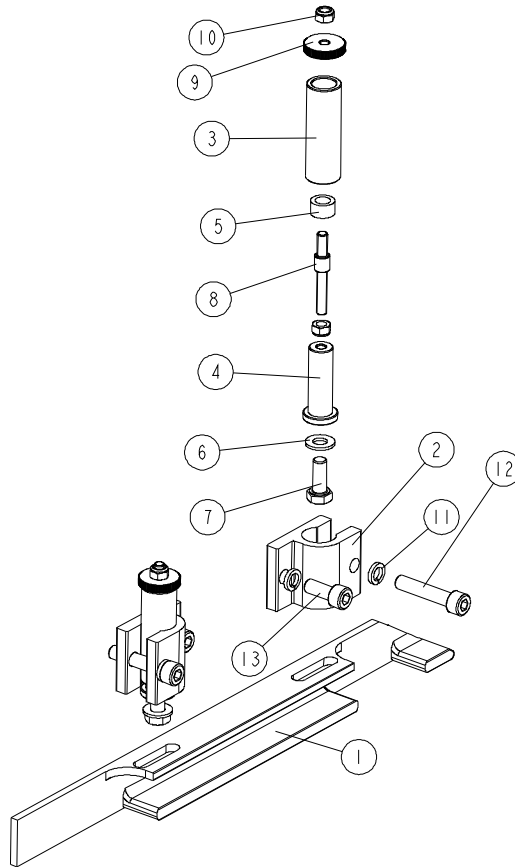
### 3.4 Bottom Cutterhead



REF	DESCRIPTION (♦ Indicates Parts Available in Assemblies Only)	PART #	QTY.
-	<b>BOTTOM CUTTER - ASSEMBLY</b>	537568	1
1	Nut M6 Zc 8 Nylock Din 982 Iso 7040	F81031-2	2
2	Washer 6,4 Zc Din 126 Iso 7091	F81053-1	2
3	Bearing Housing 1	536958-1	2
4	Washer 6,5 Zc Fender Din 9021 Iso 7093	F81053-11	2
5	Bolt M6x25 Hh Zc Ft 8.8 Din 933	F81001-3	2
6	O-ring	536959	2
7	Bearing, 6006 2rsr	096191	2
8	Lower Cutting Head MP260	260-140-5	1
9	Screw M6x12 Lshcs 10.9 Din 7984	F81001-80	4
10	Washer 8,2 Zc Spring Lock Din 127	F81054-4	4
11	Screw M8x60 Lhscs 8.8 Din 7984	F81002-41	4
12	Wedges, 11.8" (300mm) - 2 PCS	241-061	1
13	Bolt M6x12 10.9 Din 933 Iso 4017	083595	10
14	Knife, Planer; HSS; 300mm (11.8") L w/ Notch (Bottom cutter, individual knife)	TPK300.20MP	2

### 3.5 Infeed and Outfeed Fences

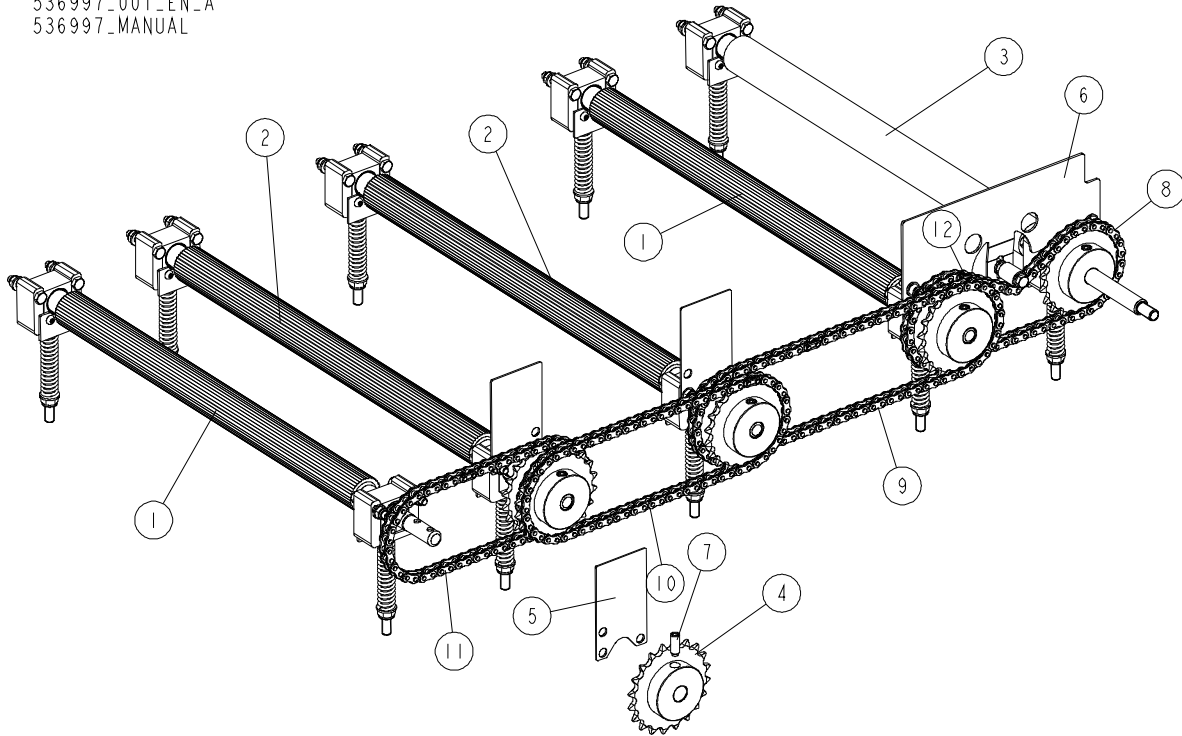
537570\_V01-EN-A  
537570\_MANUAL



REF	DESCRIPTION (♦ Indicates Parts Available in Assemblies Only)	PART #	QTY.
	<b>Assy, Infeed Fence</b>	537570	1
	<b>Assy, Outfeed Fence</b>	537572	1
1	Fence 1, Infeed	537569-1	1
	Fence 2, Outfeed	537571-1	1
2	Clamp	536966-1	2
	Adjustable Knob	536965	2
3	Pin Guide	537001-1	1
4	Knob Pin	536999-1	1
5	Insert	537002	1
6	Washer 8,4 Zc Din 126 Iso 7091	F81054-1	1
7	Bolt M8x20 Hh Zc Ft 8.8 Din 933	F81002-4	1
8	Thread Pin M6	541455	1
9	Knurled Nut	541454	1
10	Nut M6 Zc 8 Nylock Din 982 Iso 7040	F81031-2	2
11	Washer 8,2 Zc Spring Lock Din 127	F81054-4	4
12	Screw M8x40 Shcs Zc 8.8 Din 912 Iso 4762	F81002-29	2
13	Screw M8x20 Shcs Zc 8.8 Din 912 Iso 4762	F81002-30	2

### 3.6 Feed Assembly

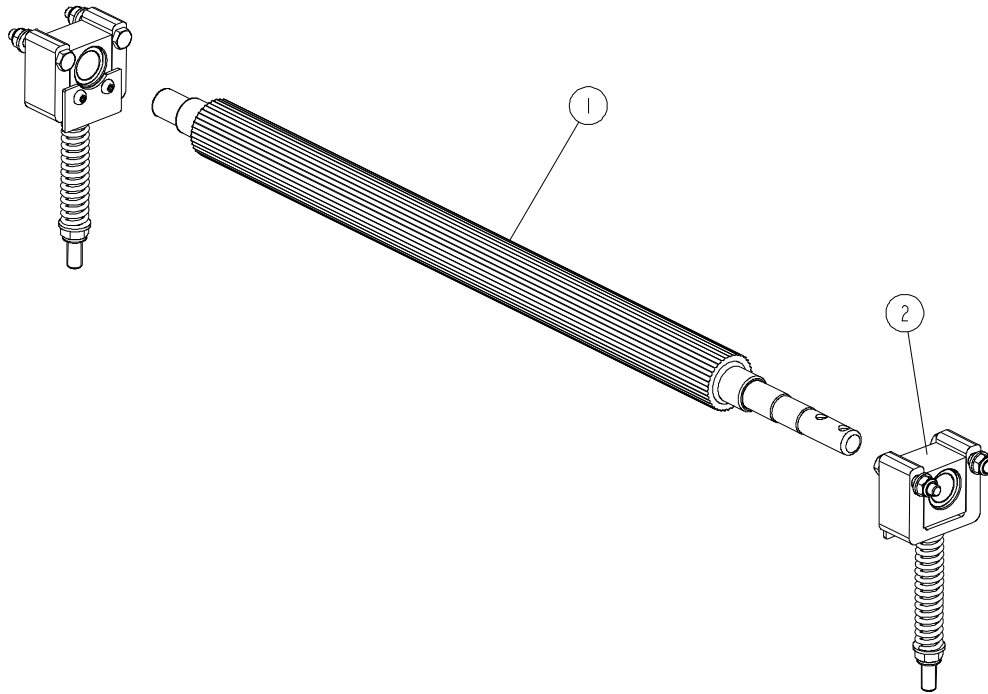
536997\_001\_EN\_A  
536997\_MANUAL



REF	DESCRIPTION (♦ Indicates Parts Available in Assemblies Only)	PART #	QTY.
-	<b>FEED ASSEMBLY</b>	536997-US	1
1	Drive Shaft Assembly <a href="#">See Section 3.7</a>	533580	2
2	Drive Shaft Assembly <a href="#">See Section 3.7</a>	537585	2
3	Shaft Assembly, W/protective Cover <a href="#">See Section 3.7</a>	533581	1
4	Assy, Sprocket, #35, 27T	533109-US	7
5	Plate, 2-1/8x3-5/8x1/16	536998-1-US	3
6	Tension Plate Complete <a href="#">See Section 3.9</a>	537535-US	1
7	Screw, M8-1.25x20mm SHSS Dog Point	F81002-77	8
8	Assy, Sprocket, #35, 21T	117344	1
9	Chain, #35x56 Pitches Incl/Master Link	537052-US	1
	Link, #35 Master	032170	1
10	Chain, #35x78 Pitches Incl/Master Link	537053-US	1
	Link, #35 Master	032170	1
11	Chain, #35x70 Pitches Incl/Master Link	537054-US	1
	Link, #35 Master	032170	1
12	Chain, #35x54 Pitches Incl/Master Link	537051-US	1
	Link, #35 Master	032170	1

**3.7 Drive Shaft Assemblies**

533580\_001\_A  
533580\_MANUAL

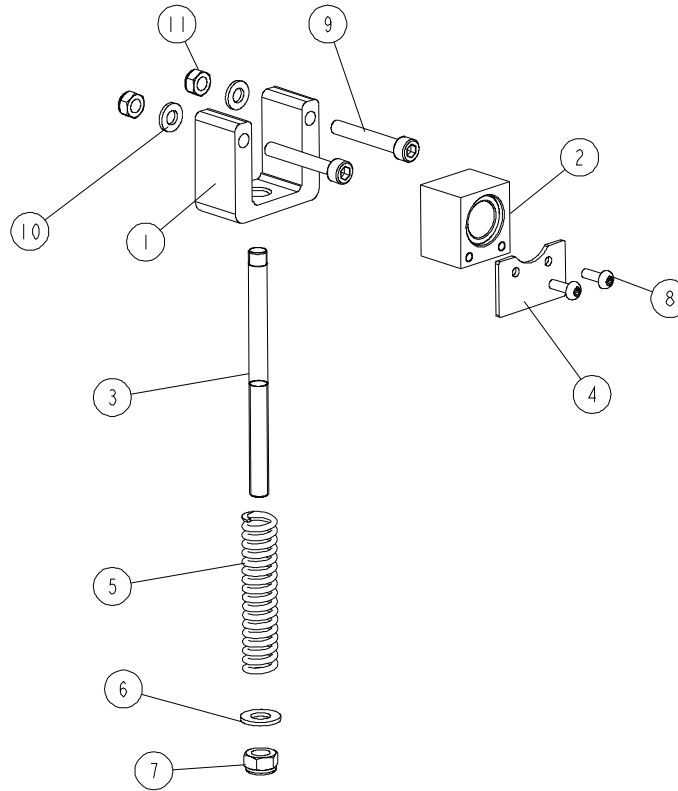


REF	DESCRIPTION (♦ Indicates Parts Available in Assemblies Only)	PART #	QTY.
-	DRIVE SHAFT ASSEMBLY	533580	1
-	DRIVE SHAFT ASSEMBLY	537585	1
-	DRIVE SHAFT ASSEMBLY	533581	1
1	Shaft, Steel Drive for 533580	533513-1	1
	Shaft, Steel Drive for 533585	537586-1	1
	Shaft W/protective Cover for 533581	533512	1
2	Bearing Assembly, Slide <a href="#">See Section 3.8</a>	533520	2



### 3.8 Slide Bearing Assembly

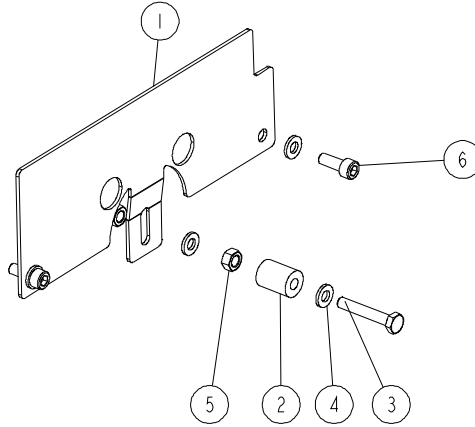
533520\_001\_B  
533520\_MANUAL



REF	DESCRIPTION (♦ Indicates Parts Available in Assemblies Only)	PART #	QTY.
-	<b>BEARING ASSEMBLY, SLIDE</b>	533520	1
1	Housing, Slide Bearing	533514	1
2	Slide Block Assembly	537575	1
3	Rod, M8 Threaded	533518	1
4	Cover, Rubber	533516	1
5	Spring	533519	1
6	Washer 8,4 Zc Din 126 Iso 7091	F81054-1	1
7	Nut M8 Zc 8 Nylock Din 982 Iso 7040	F81032-2	1
8	Screw M4x12 Phillips Zc 5.8 Din 7985	F81011-43	2
9	Bolt M6x40 HH Zc Ft 8.8 Din 933	F81001-5	2
10	Washer 6,4 Zc Din 126 Iso 7091	F81053-1	2
11	Nut M6 Zc 8 Nylock Din 982 Iso 7040	F81031-2	2

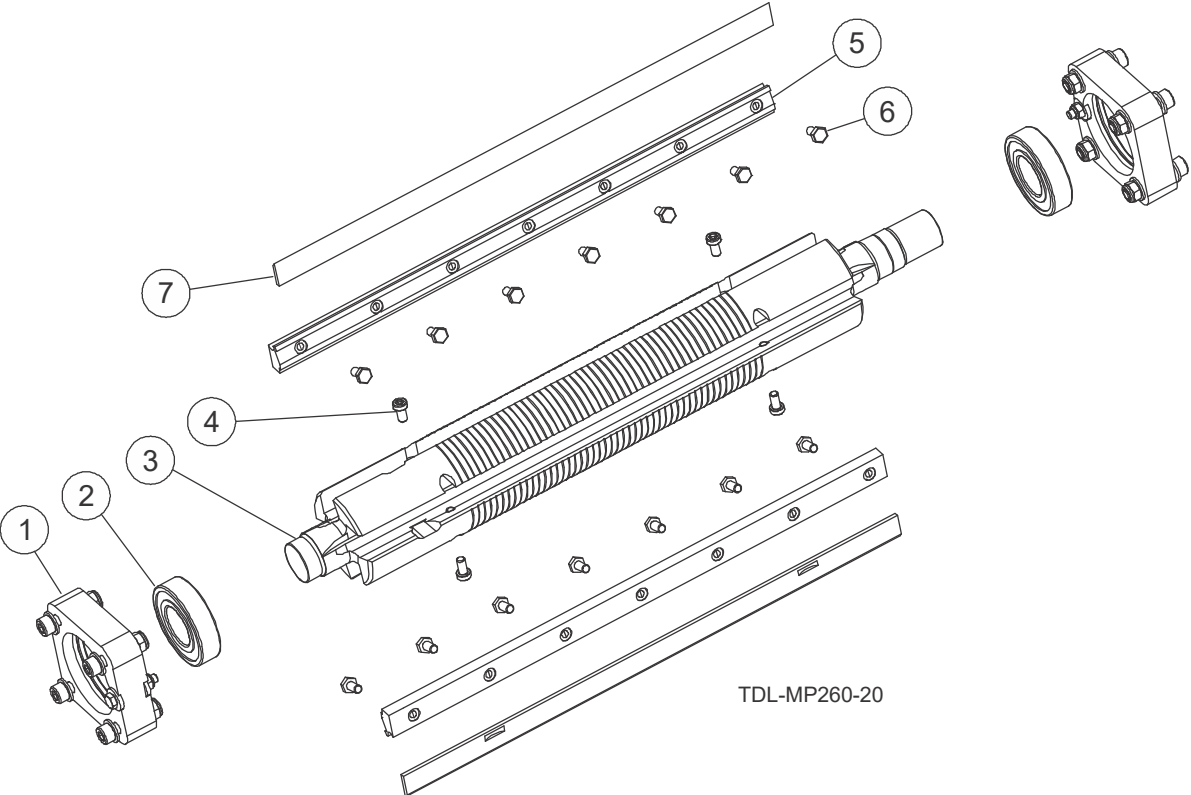
### 3.9 Tension Plate

537535\_001\_EN  
537535\_MANUAL



REF	DESCRIPTION (♦ Indicates Parts Available in Assemblies Only)	PART #	QTY.
-	<b>TENSION PLATE COMPLETE</b>	537535-US	1
1	Bracket, Tension Plate	537534-1-US	1
2	Bushing, Spacer	R80671-6-US	1
3	Bolt, M6-1.0x35mm Class8 HH	F05020-9	1
4	Washer, M6 Flat Class 4	F05026-1	4
5	Nut, M6-1 Swaged	F05027-16	2
6	Screw, M6-1.0 x 16mm SHCS	F05004-206	2

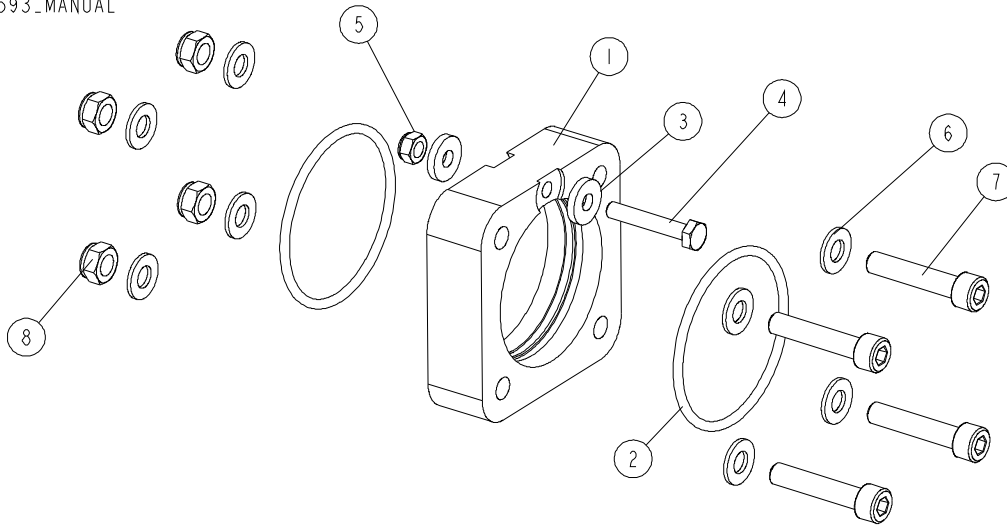
3.10 Cutterhead Assembly (Upper)



REF	DESCRIPTION (♦ Indicates Parts Available in Assemblies Only)	PART #	QTY.
-	SHAFT ASSEMBLY, DRIVE	533682	1
1	Housing Assembly, Bearing <a href="#">See Section 3.11</a>	533593	2
2	Bearing, 6206 2rsr P6 Rolling (Fag, Nsk, Skf)	100787	2
3	Shaft, Main	260-138	1
4	Screw M6x12 Lshcs 10.9 Din 7984	F81001-80	4
5	Wedges, 410mm 16" - 2 PCS	241-060	1
6	Bolt M6x12 10.9 Din 933 Iso 4017	083595	14
7	Knife, Planer; HSS; 410mm (16") L w/ Notch	TPK410.20MP	2

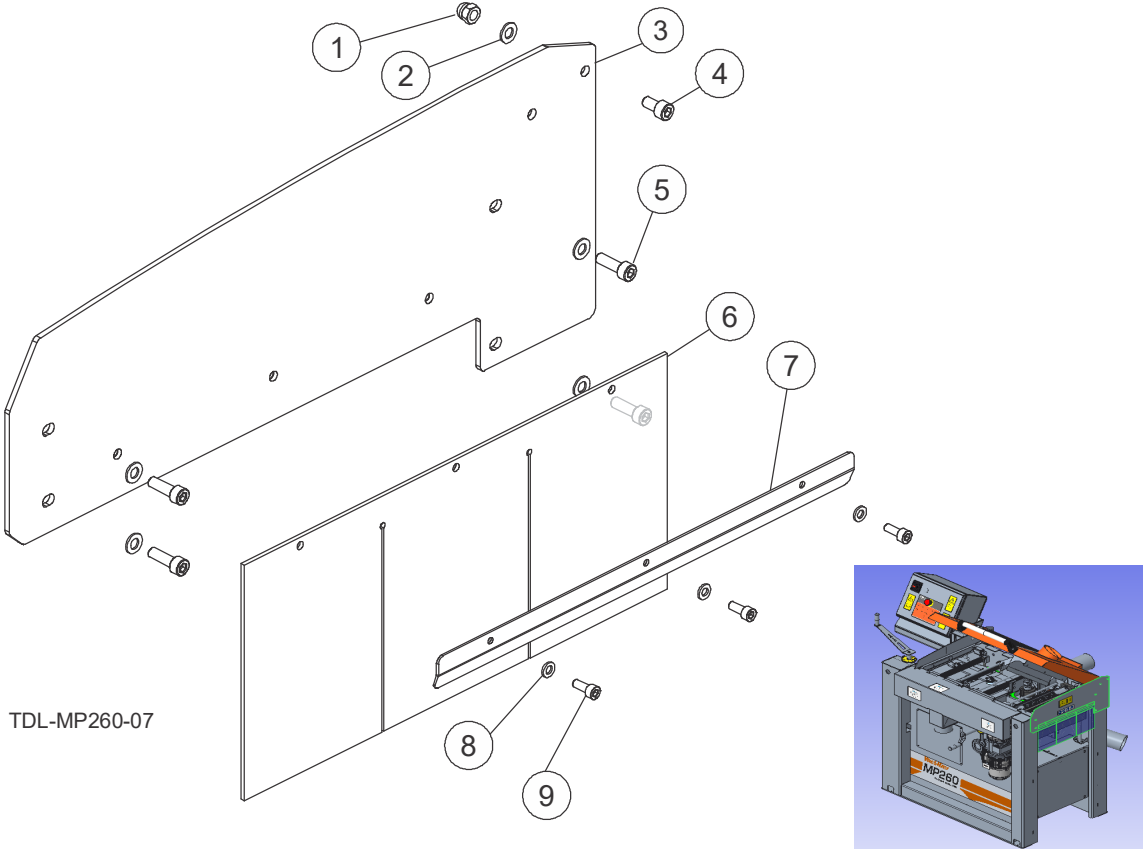
### 3.11 Bearing Housing

533593\_001  
533593\_MANUAL



REF	DESCRIPTION (♦ Indicates Parts Available in Assemblies Only)	PART #	QTY.
-	<b>HOUSING ASSEMBLY, BEARING</b>	533593	1
1	Housing, Bearing	533590-1	1
2	O-ring, Bearing Housing	533592	2
3	Washer 6,4 Zc Din 7349	F81053-13	2
4	Bolt M6x35 Hh Zc 8.8 Pt Din 931	F81001-71	1
5	Nut M6 Zc 8 Nylock Din 982 Iso 7040	F81031-2	1
6	Washer 8,4 Zc Din 126 Iso 7091	F81054-1	8
7	Screw M8x40 Shcs Zc 8.8 Din 912 Iso 4762	F81002-29	4
8	Nut M8 Zc 8 Nylock Din 982 Iso 7040	F81032-2	4

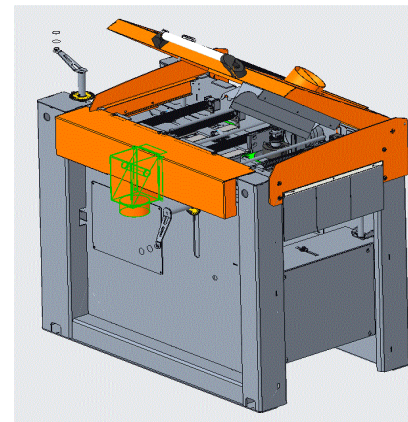
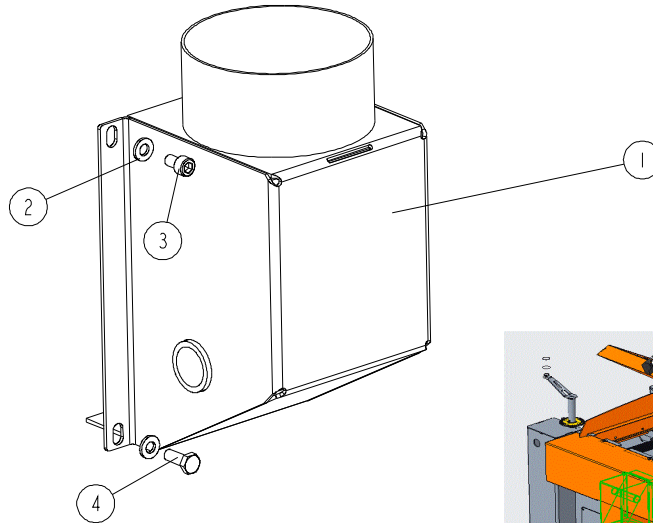
3.12 Right Guard



REF	DESCRIPTION (♦ Indicates Parts Available in Assemblies Only)	PART #	QTY.
	<b>ASSY, RIGHT COVER</b>	537550-US	1
1	Nut, M8-1.25 Cap	F81033-25	1
2	Washer, M8 Flat	F05026-4	5
3	Weldment, Right Cover	537548-1-US	1
4	Screw, M8-1.25x16 SHC	F05021-10	1
5	Screw, M8-1.25x25 SHC BO	F05021-33	4
6	Plate, Flexible Cover	533083-US	1
7	Bracket, Cover Support	537551-1-US	1
8	Washer, M6 Flat Class 4	F05026-1	3
9	Screw, M6-1.0 x 16mm SHCS	F05004-206	3

### 3.13 Sawdust Outlet Guard

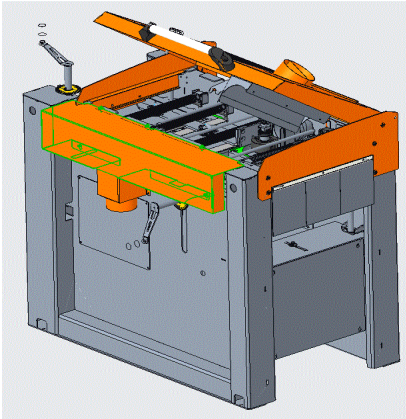
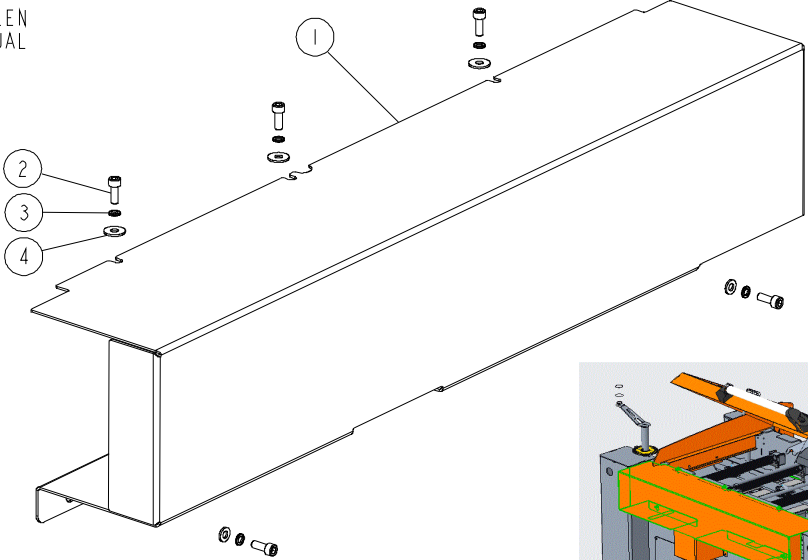
537533\_001\_EN\_A  
537533\_MANUAL



REF	DESCRIPTION (♦ Indicates Parts Available in Assemblies Only)	PART #	QTY.
	<b>ASSY, SAWDUST OUTLET GUARD</b>	537533-US	1
1	Weldment, Sawdust Outlet Guard	537530-1-US	1
2	Bolt, M6-1 x 14 Class 8 HH	f05020-7	2
3	Washer, M6 Flat Class 4	F05026-1	4
4	Bolt, M6-1x10mm HH FT 8.8 Zinc	F05020-59	2

**3.14 Side Guard**

537525\_001\_EN  
 537525\_MANUAL



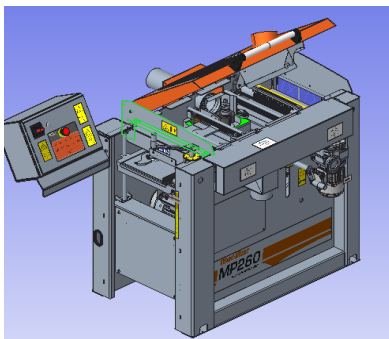
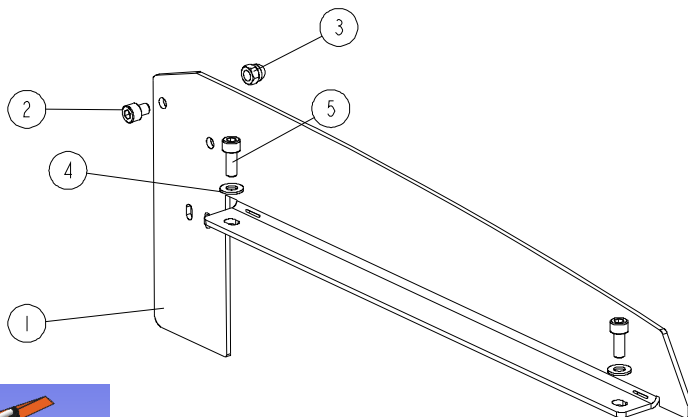
REF	DESCRIPTION (♦ Indicates Parts Available in Assemblies Only)	PART #	QTY.
-	<b>SIDE GUARD COMPLETE</b>	537525-US	1
1	Bracket, Side Guard	537524-1-US	3
2	Screw, M6-1 x 20 SHC	F05020-15	2
3	Washer, M6 Split Lock	F05026-2	5
4	Washer, M6 Flat Class 4	F05026-1	5

# 3 Mechanical Assembly

## Right Guard

### 3.15 Left Guard

537553\_001\_EN  
537553\_MANUAL

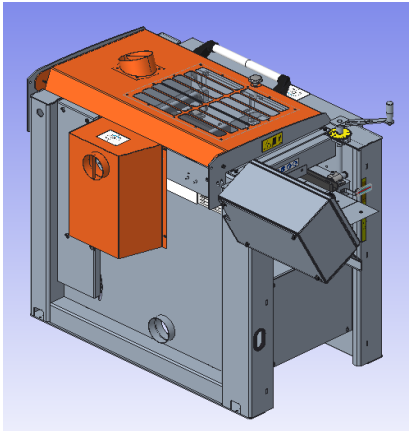
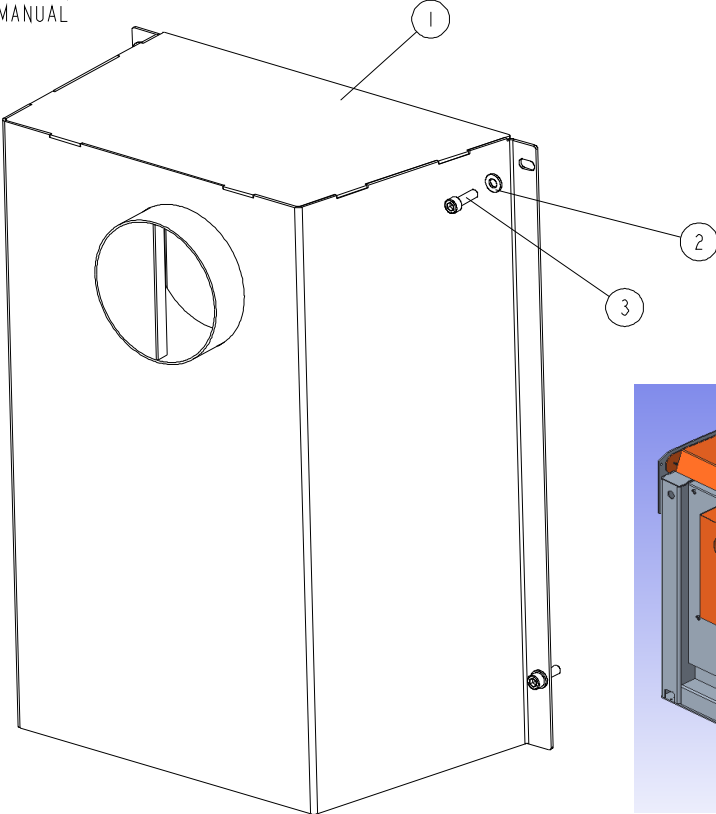


REF	DESCRIPTION (♦ Indicates Parts Available in Assemblies Only)	PART #	QTY.
-	<b>LEFT GUARD COMPLETE</b>	537553-US	1
1	Bracket, Left Guard Plate	537552-1-US	1
2	Screw, M8-1.25x16 SHC	F05021-33	1
3	Nut, M8-1.25 Cap	F81033-25	1
4	Washer, M8 Flat	F05026-4	3
5	Screw, M8-1.25x25 SHC BO	F81002-30	2



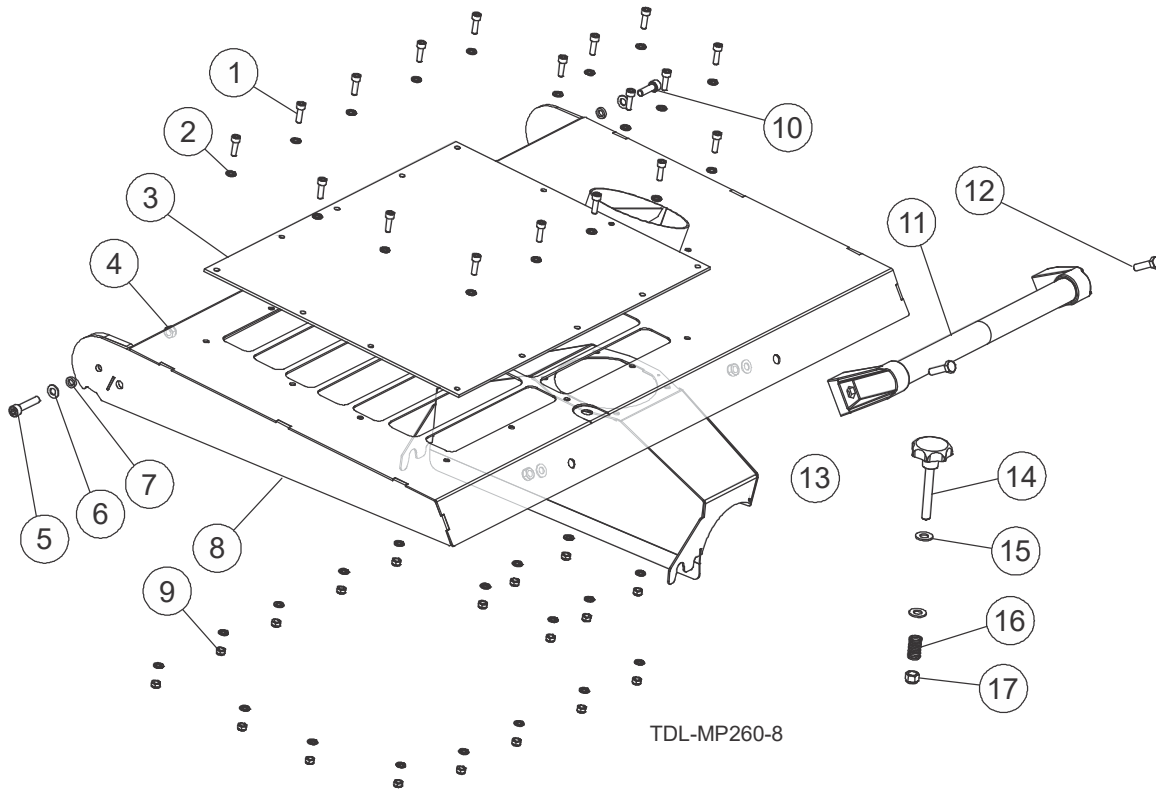
**3.16 Sawdust Outlet Guard**

537523\_001\_EN  
 537523\_MANUAL



REF	DESCRIPTION (♦ Indicates Parts Available in Assemblies Only)	PART #	QTY.
-	<b>SAWDUST OUTLET GUARD COMPLETE</b>	537523-US	1
1	Weldment, Sawdust Outlet Guard	537520-1-US	1
2	Washer, M6 Flat Class 4	F05026-1	4
3	Screw, M6-1 x 20 SHC	F05020-15	4

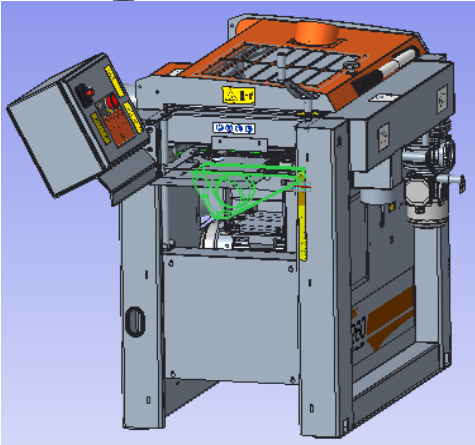
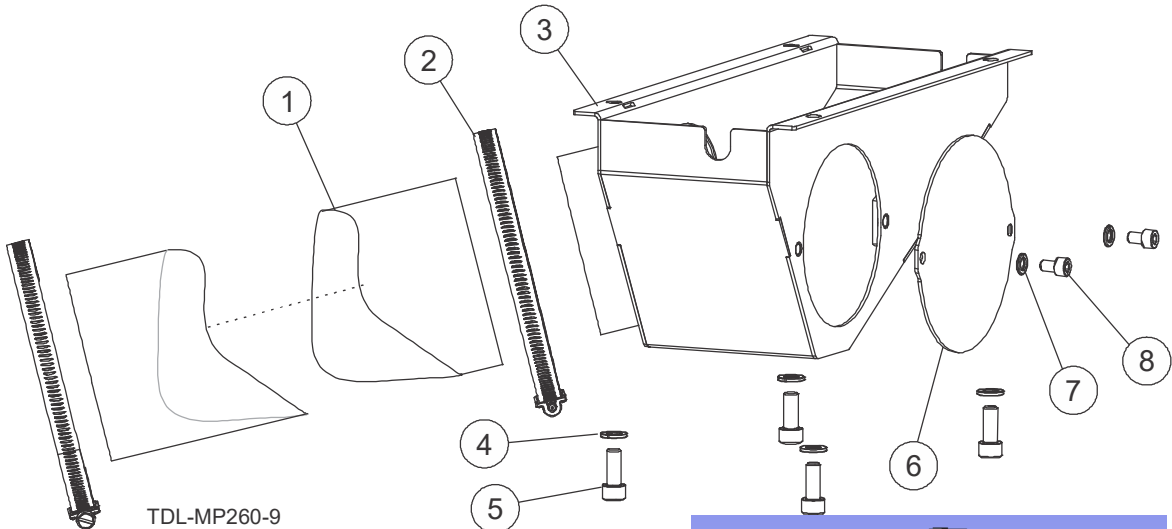
### 3.17 Top Cover



TDL-MP260-8

REF	DESCRIPTION (♦ Indicates Parts Available in Assemblies Only)	PART #	QTY.
	<b>ASSY, TOP COVER</b>	536986-US	1
1	Screw, M6-1 x 20 SHC	F05020-15	18
2	Washer, M6 Split Lock	F05026-2	36
3	Plate, Inspection Window	536987-US	1
4	Nut, M8-1.25 Hex Nylock	F05010-132	4
5	Screw, M8-1.25 x 40 SHC	F05021-6	1
6	Washer, M8 Flat	F05026-4	4
7	Spacer, .315x.500x.125 Nylon	533674-US	2
8	Weldment, Top Cover	536985-1-US	1
9	Nut, M6-1.0 Nylon Lock	F05010-200	18
10	Screw, M8-1.25x25 SHC BO	F05021-33	1
11	Assy, Cover Pull Handle	535614-US	1
12	Bolt, M8-1.25x30 Class 8 HHC	F05021-5	2
13	Weldment, Sawdust Extractor	537555-1-US	1
	Assy, Star Knob	533685-US	1
14	Knob, Star Grip; M10-1.5 x 70mm L Stud	533683	1
15	Washer, M10 Flat SAE	F05011-134	2
16	Spring, .60 0Dx1 Long x.072 Wire Comp	533677-US	1
17	Nut, M10-1.25Hex Nyl Lock	F05004-276	1

**3.18 Sawdust Outlet**



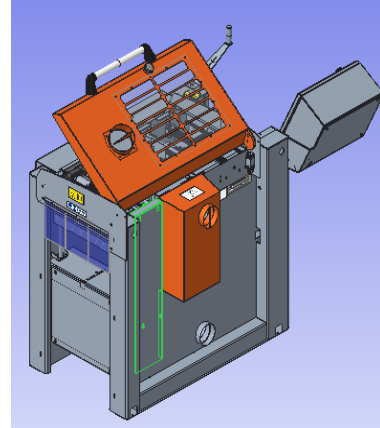
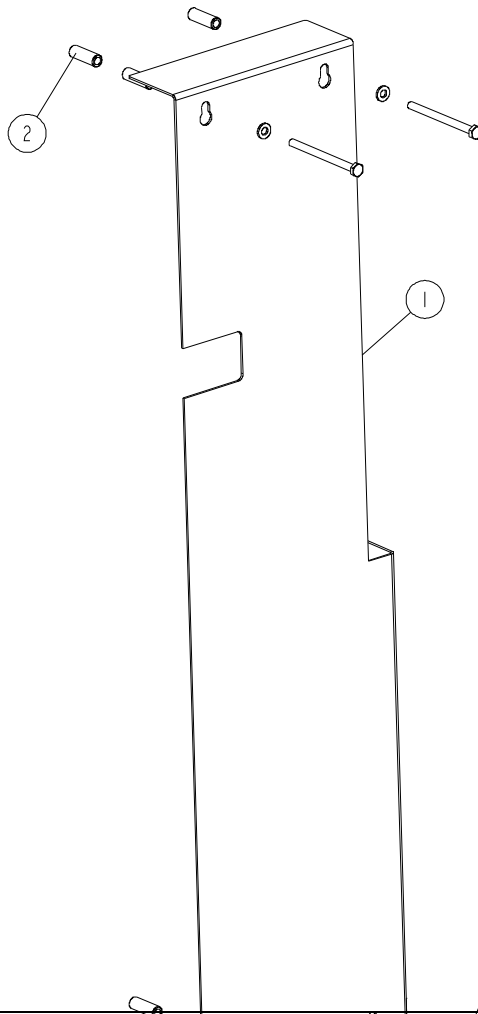
REF	DESCRIPTION (♦ Indicates Parts Available in Assemblies Only)	PART #	QTY.
	<b>ASSY, SAWDUST OUTLET COMPLETE</b>	537547-US	1
1	Hose, 4" Clear Abrasion-Resistant Duct	537389-US	1
2	Clamp, Worm, 3 1/8 - 6 Dia	123356	2
3	Weldment, Sawdust Outlet	537546-1-US	1
4	Washer, M8 Split Lock	F05011-45	4
5	Screw, M8x20mm SHC	F81002-30	4
6	Plate, Cover	537543-1-US	1
7	Washer, M6 Split Lock	F05026-2	2
8	Screw, M6-1x10 SHC	F05020-19	2

# 3 Mechanical Assembly

## Right Guard

### 3.19 V-belt Cover

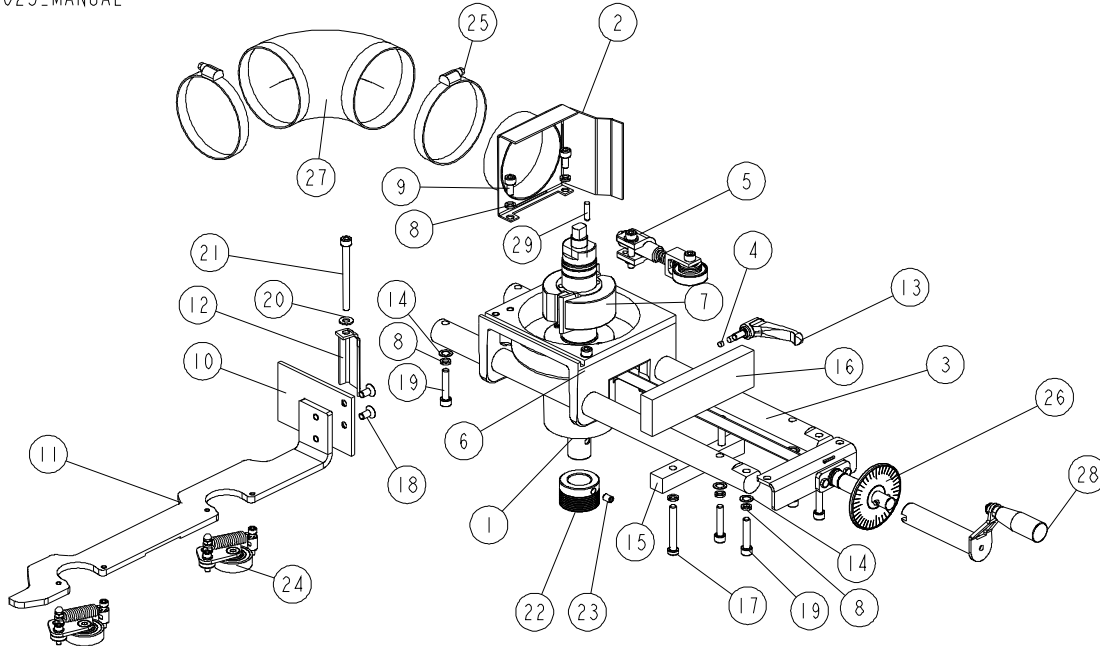
537566\_001\_EN  
537566\_MANUAL



REF	DESCRIPTION (♦ Indicates Parts Available in Assemblies Only)	PART #	QTY.	
	<b>ASSY, V-BELT COVER</b>	537566-US	1	
1	Bracket, Side Cover	537540-1-US	1	
2	Bushing, Spacer	534209-1-US	4	
3	Washer, M6 Flat Class 4	F05026-1	4	
4	Screw, M6-1.0x50mm SHC	F05020-86	4	

### 3.20 Spindle Moving Assembly

537025\_001\_EN\_A  
537025\_MANUAL



REF	DESCRIPTION (♦ Indicates Parts Available in Assemblies Only)	PART #	QTY.
-	<b>SPINDLE MOVING ASSEMBLY</b>	537025-US	1
1	Spindle Mount Base	546837-1 <sup>1</sup>	1
	Spindle Mount Base	260-510B	1
2	Weldment, Sawdust Outlet	537028-1-US	1
3	Drawn Rod 1.181 inch	537041-US	2
4	Round, Slide .236Dia x.157	535987-US	2
5	Assy, Pressure Roller <a href="#">See Section 3.21</a>	533550	1
6	Screw, M8-1.25x35mm SHC	F81002-58	1
7	Left Spindle Assembly <a href="#">See Section 3.22</a>	537005-US	1
8	Washer, M8 Split Lock	F05011-45	10
9	Screw, M8-1.25x16 SHC	F05021-10	2
10	Mount Plate	537027-1-US	1
11	Bracket, Board Guard Fence	537026-1-US	1
12	Bracket, Guide Mount	535984-1-US	1
13	Adjustable Handle ERZ.63 p-M8x-16	535988-US	1
14	Washer, Shim 0.391Dx0.625Dx0.031	535990-US	8
15	Bar, 3/4x1x5 1/2	536956-1-US	1
16	Bar, 3/4x1.969x6 25/32	536957-1-US	1
17	Screw, M8-1.25x70mm SHCS BO	F05021-41	2
18	Bolt, M8-1.25x16 Flat SHC Zinc	F05021-42	2
19	Screw, M8-1.25 x 40 SHC	F05021-6	6

## 3

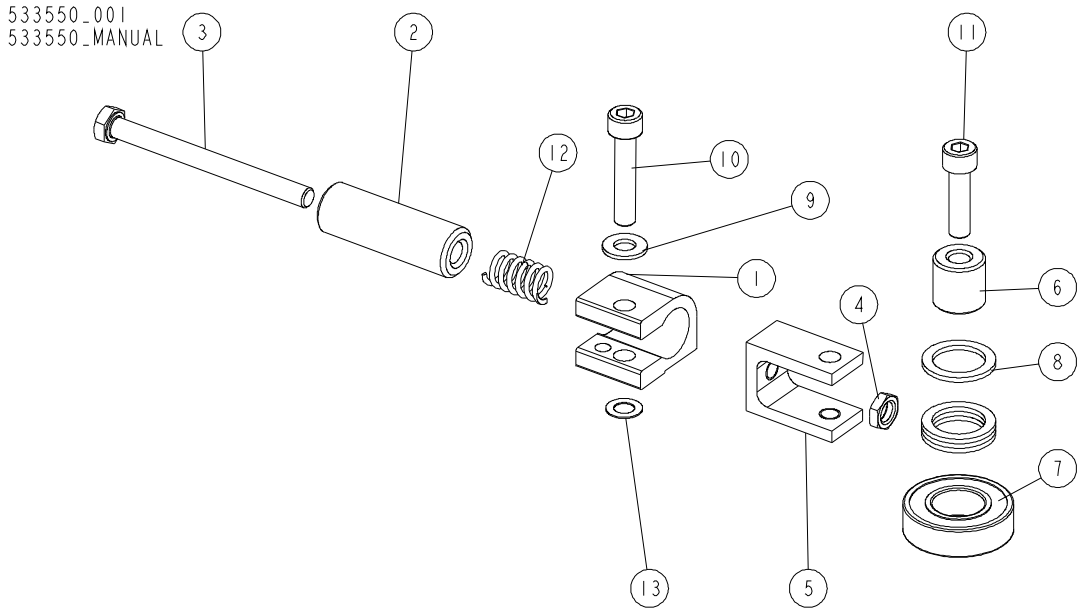
## Mechanical Assembly

### Spindle Moving Assembly

REF	DESCRIPTION (♦ Indicates Parts Available in Assemblies Only)	PART #	QTY.	
20	Washer, M8 Flat	F05026-4	1	
21	Screw, M8-1.25x90mm SHC, Zinc	F81002-44	1	
22	Pulley, 8PJx48mmx28mm	533586	1	
23	Screw, M8-1.25x12mm, Cup-Point Set	F05021-53	1	
24	Assy, Clamp Roller Complete <a href="#">See Section 3.23</a>	536980-US	2	
25	Clamp, Worm, 3 1/8 - 6 Dia	123356	2	
26	Assy, Side Feed <a href="#">See Section 3.24</a>	537042-US	1	
27	Hose, 4" Clear Abrasion-Resistant Duct	537390-US	1	
28	Assy, Handle <a href="#">See Section 3.27</a>	537810-US	1	
29	Pin, M6x24mm Dowel	F81045-5	1	

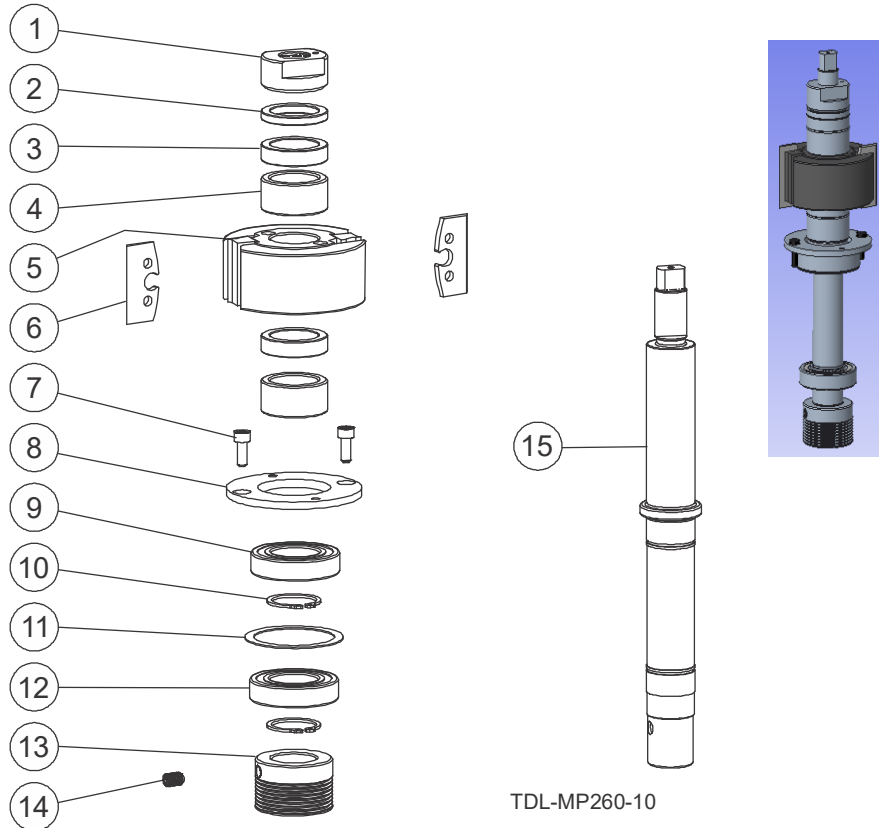
<sup>1</sup> 546837-1 replaced 260-510B after 11/30/2021 per ECN 38261

### 3.21 Pressure Roller Assembly II



REF	DESCRIPTION (♦ Indicates Parts Available in Assemblies Only)	PART #	QTY.
-	<b>PRESSURE ROLLER ASSEMBLY</b>	533550	1
1	Connector, Aluminium	533551-1	1
2	Bushing, 8.5/20-60 Zinc-plated	533553-1	1
3	Bolt M8x90 Hh Zc Ft 8.8 Din 933	F81002-16	1
4	Nut, M8-04-fe/zn Iso4035 Hex Thin	F81032-8	1
5	Connector, Aluminium	533552	1
6	Bushing, 8.2/20-20	533554-1	1
7	Bearing, 6004 2rs Cx Rolling	093868	1
8	Washer, 28/20-2	533555	4
9	Washer 8,4 Zc Din 126 Iso 7091	F81054-1	1
10	Screw M8x40 Shcs Zc 8.8 Din 912 Iso 4762	F81002-29	1
11	Screw M8x30 Shcs Zc 8.8 Din 912 Iso 4762	F81002-31	1
12	Spring, 12x25xn2	533556	1
13	Ring Shim 14/8-05 Din 988	F81055-16	1

### 3.22 Left Spindle Assembly

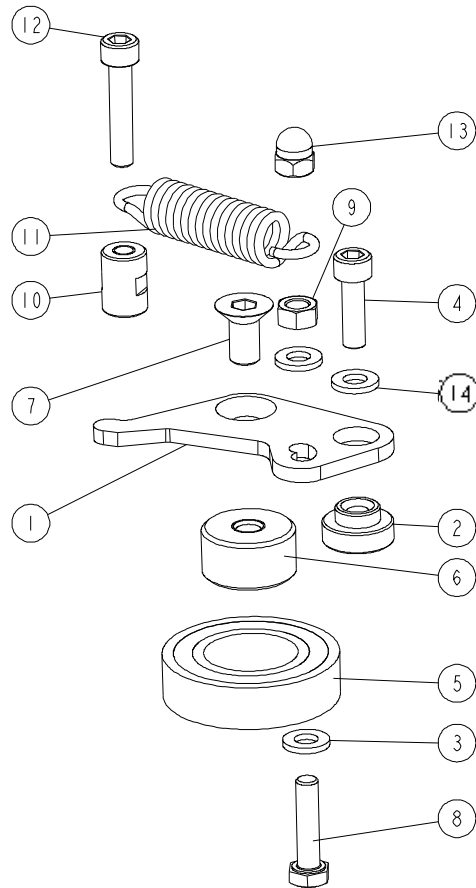


REF	DESCRIPTION (♦ Indicates Parts Available in Assemblies Only)	PART #	QTY.
	<b>SPINDLE ASSY, LEFT</b>	537005-US	1
1	Bushing, M20x1.5IDx1 5/8ODx25/32	533538-1-US	1
2	Bushing, 1-5/8ODx1.183IDx0.205	533540-1-US	1
3	Bushing, 1-5/8ODx1.183IDx0.394	533539-1-US	2
4	Bushing, 1-5/8ODx1.183IDx0.795	533541-1-US	2
5	Cutterhead, 88D x 40L x 30B mm; Side 2kn	240-010	1
6	Knives (set of 2)	TPK50.024.4TB	1 set
7	Screw, M6-1.0 x 16mm SHCS	F05004-206	2
8	Plate, Clamping	533542-1-US	1
9	Bearing, 6206 2RSR P6 Rolling	100787	1
10	Ring, 30mm External Retaining	F81090-23	2
11	Plate, Washer MP260	533543-US	1
12	Bearing, 6006 2RSR	096191	1
13	Pulley, 8PJx48mmx28mm	533586	1
14	Screw, M8-1.25x12mm SHSS Cup Point	F05021-53	1
15	Shaft, MP260 Shaft Left	533537-US	1



### 3.23 Clamp Roller Assembly

536980\_001  
 536980\_MANUAL



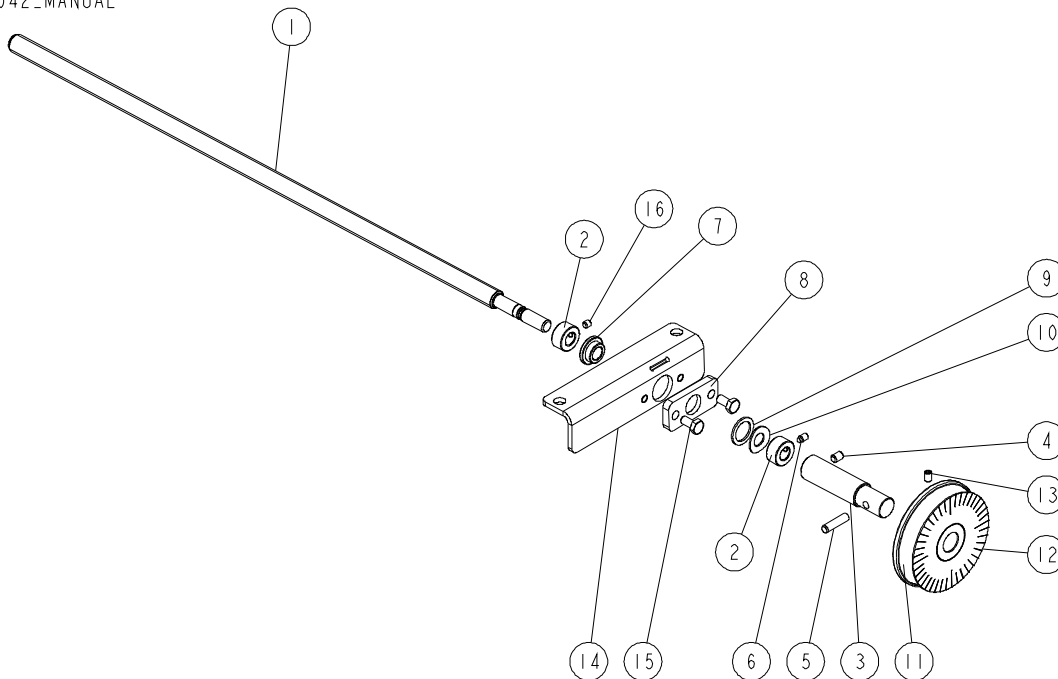
REF	DESCRIPTION (♦ Indicates Parts Available in Assemblies Only)	PART #	QTY.
-	<b>CLAMP ROLLER ASSEMBLY</b>	536980-US	1
1	Plate, Bearing Movable	533525-1-US	1
2	Bushing, Flanged	533632-US	1
3	Washer 6.4 Zc Din 126 Iso 7091	F81053-1	2
4	Screw, M6-1 x 20 SHC	F05020-15	1
5	Bearing 6005 2rs	089652	1
6	Bushing, M8/25-13.5 Zinc-plated	533529-1-US	1
7	Bolt, M8-1.25x16 Flat SHC Zinc	F05021-42	1
8	Bolt, M6-1 x 25 Class 8 HHC	F05020-33	1
9	Nut, M6 x 1 Hex Jam	F05010-226	1
10	Bushing, M6x1IDx0.5ODx.67	533633-1-US	1
11	Spring, .625x2.5x.069 Extension	533571-US	1
12	Screw, M6-1x30 SHC	F05020-25	1
13	Nut, M6 x 1 Flanged Serrated Lock	F05010-248	1
14	Washer, M8 Flat	F05026-4	1

# 3 Mechanical Assembly

## Spindle Moving Assembly

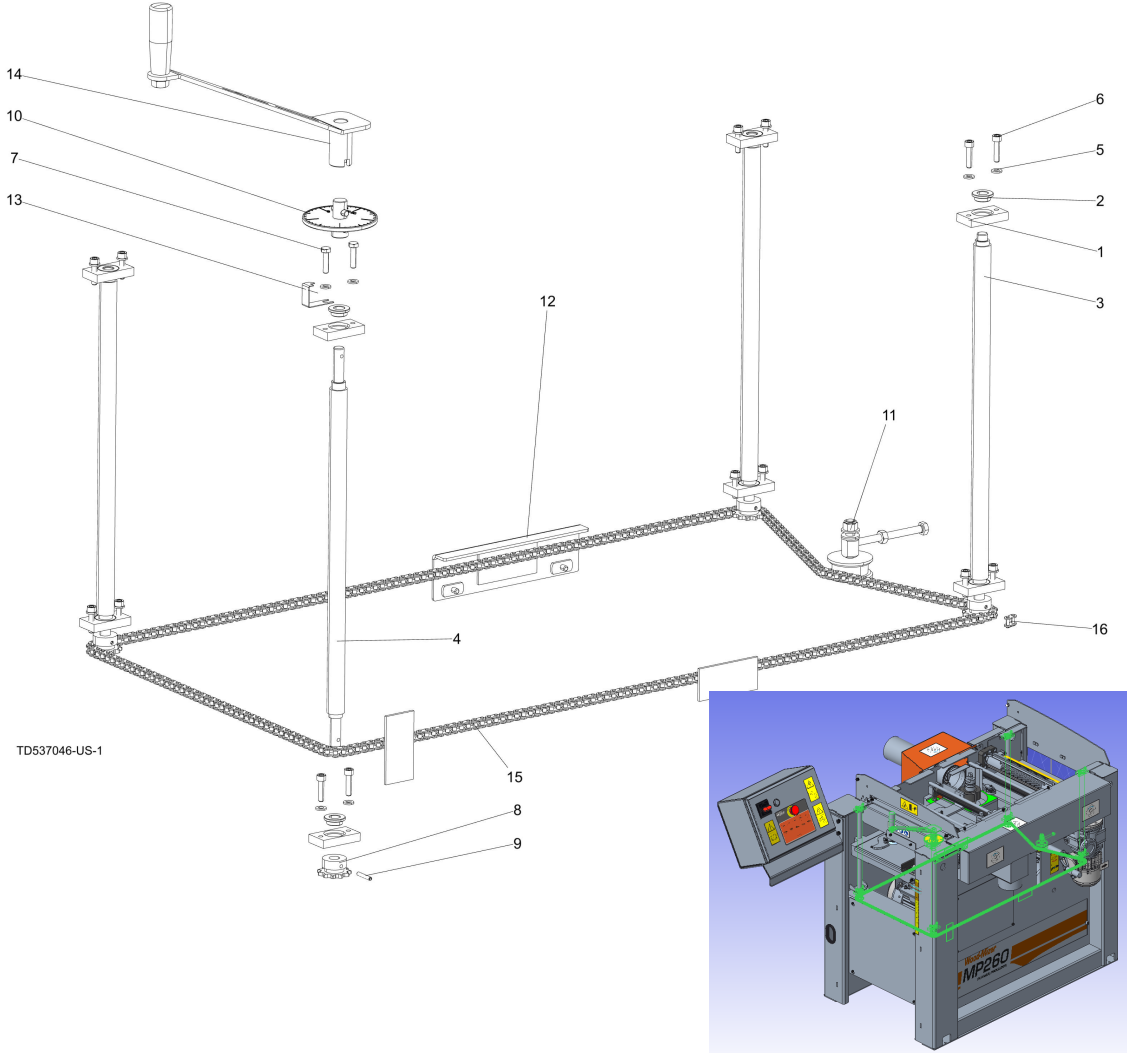
### 3.24 Side Feed Assembly

537042\_001\_EN\_A  
537042\_MANUAL



REF	DESCRIPTION (♦ Indicates Parts Available in Assemblies Only)	PART #	QTY.
-	<b>ASSY, SIDE FEED</b>	537042-US	1
1	Screw, Tr14x4 550L mm	535996	1
2	Bushing, .394IDx.75ODx.394	535997-1-US	2
3	Bushing, Connector	537044-1-US	1
4	Pin, M4.5x24mm Roll	F81044-13	1
5	Pin, 1/4x1 Dowel	F05012-134	1
6	Screw, M5-0.8x8mm SHSS Dog Point	F81014-15	1
7	Sleeve, Self Oil B-10-16-8/22-3	541372	1
8	Plate, Slide Bushing Plate	535991-1-US	1
9	Washer, M16 Flat	F05026-6	1
10	Washer, Bellville 1/2IDx1ODx.085H	F05011-138	1
11	Bushing, Round scale	533594-US	1
12	Decal, MP260 Round Scale	533577-US	1
13	Screw, M5-0.8x8mm SHSS Dog Point	F81014-15	1
14	Bracket, Screw Mounting Plate	537045-1-US	1
15	Screw, M6-1.0 x 16mm SHCS	F05004-206	2
16	Screw, M6-1.0x5mm SHSS Cup Point	F81014-14	1

3.25 Up/Down Feed Assembly



REF	DESCRIPTION (♦ Indicates Parts Available in Assemblies Only)	PART #	QTY.
-	<b>UP/DOWN FEED ASSEMBLY</b>	537046-US	1
1	Plate, Block	533113-1-US	8
2	Bushing, 12x18x8 Flanged 24-3 Bronze	546901 <sup>1</sup>	8
	Bushing, 12.3/18-8 Flanged 24-3	533114	
3	Screw, Tr20x4 x 444L mm	533116	3
4	Screw, Tr20x4 x 468L mm	537047	1
5	Washer, M6 Flat Class 4	F05026-1	16
6	Screw, M6-1x25 SHC	F05020-22	14
7	Bolt, M6-1 x 25 Class 8 HHC	F05020-33	2
8	Assy, Sprocket, #35, 11T	533111-US	4
9	Pin, 5/32x1 Spring Roll	F81044-13_US	4
10	Scale, Round Complete <a href="#">See Section 3.26</a>	533676-US	1

### 3 Mechanical Assembly

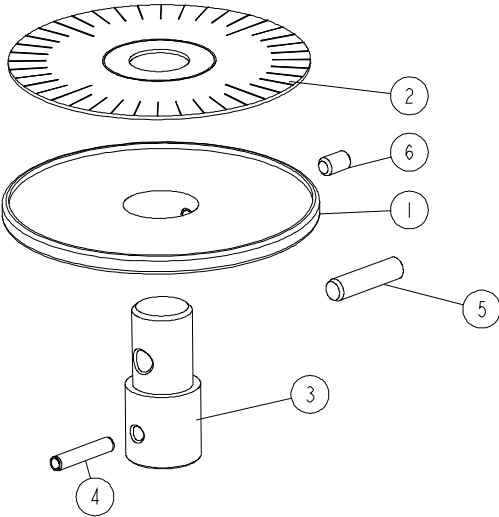
#### Spindle Moving Assembly

REF	DESCRIPTION (♦ Indicates Parts Available in Assemblies Only)	PART #	QTY.	
11	Chain Tension, Assembly <a href="#">See Section 3.29</a>	534390-US	1	
12	Chain Slide Assembly <a href="#">See Section 3.30</a>	537560-US	1	
13	Bracket, Scale Indicator	537558-US	1	
14	Handle Assembly <a href="#">See Section 3.28</a>	535975-US	1	
15	Chain, #35x292 Pitches Incl/Master Link	537050-US	1	
16	Link, #35 Master	032170	1	

<sup>1</sup> Bronze Bushing replaced Plastic Bushing after 3/18/2021 per ECN 37868

**3.26 Up/Down Feed Scale**

533676\_001\_A  
 533676\_MANUAL

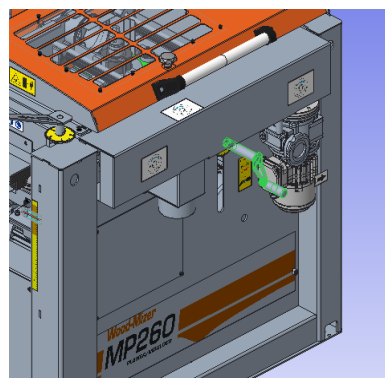
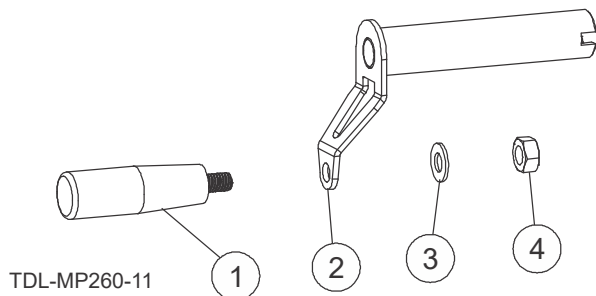


REF	DESCRIPTION (♦ Indicates Parts Available in Assemblies Only)	PART #	QTY.
-	<b>SCALE, ROUND COMPLETE</b>	533676-US	1
1	Bushing, Round Scale	533594-US	1
2	Decal, Round Scale	533577-US	1
3	Bushing, Connector	533595-1	1
4	Pin, 5/32x1 Harden Dowel	F05012-28	1
5	Pin, 1/4x1 Dowel	F05012-134	1
6	Screw, M5-0.8x8mm SHSS Dog Point	F81014-15	1

### 3 Mechanical Assembly

#### Spindle Moving Assembly

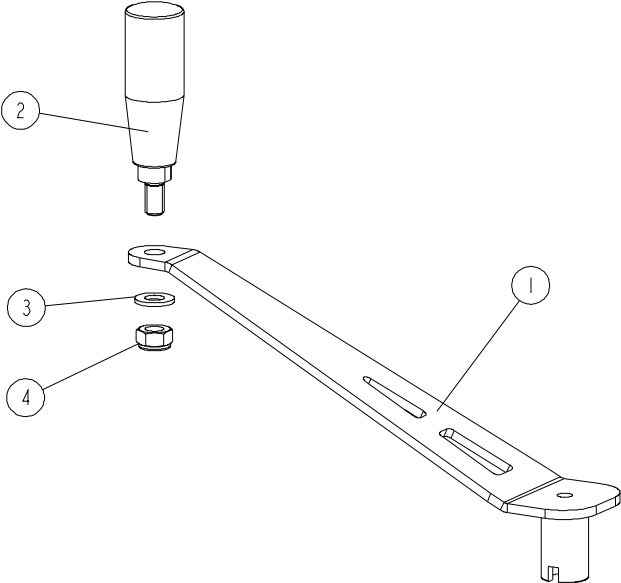
### 3.27 Moveable Cutter Handle



REF	DESCRIPTION (♦ Indicates Parts Available in Assemblies Only)	PART #	QTY.
	<b>ASSY, HANDLE</b>	537810-US	1
1	Plastic Tapered Handle w/ Revolving Grip	533505-US	1
2	Weldment, Handle	537811-1-US	1
3	Washer, M10 Flat SAE	F05011-134	1
4	Nut, M10-1.5 Hex	F05010-85	1

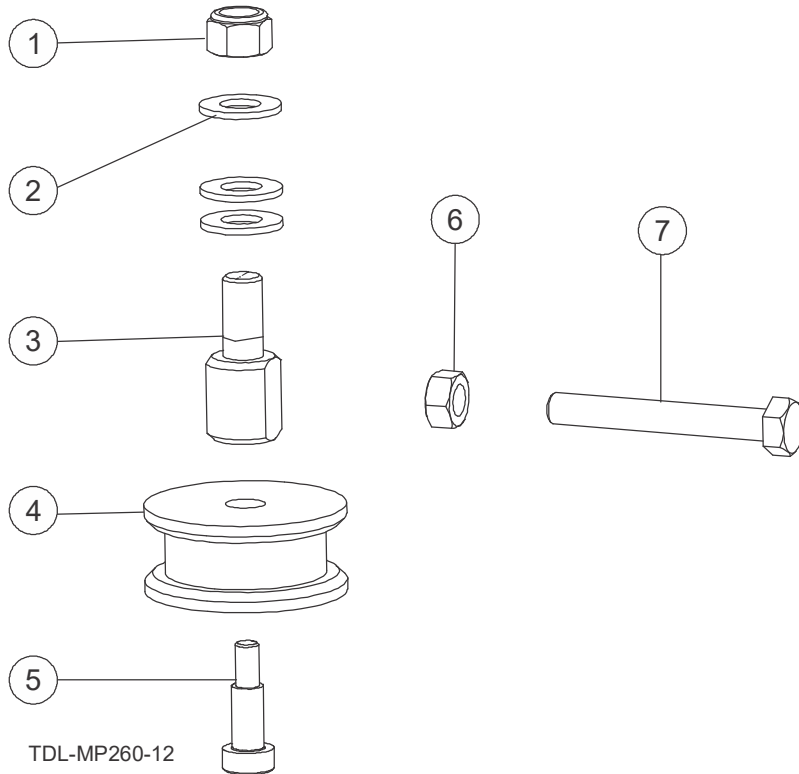
**3.28 Up/Down Feed Handle**

535975\_001\_EN  
 535975\_MANUAL



REF	DESCRIPTION (♦ Indicates Parts Available in Assemblies Only)	PART #	QTY.	
	<b>ASSY, HANDLE</b>	535975-US	1	
1	Weldment, Handle	535973-1-US	1	
2	Plastic Tapered Handle w/ Revolving Grip	533505-US	1	
3	Washer, M10 Flat SAE	F05011-134	1	
4	Nut, M10-1.5 Hex	F05010-85	1	

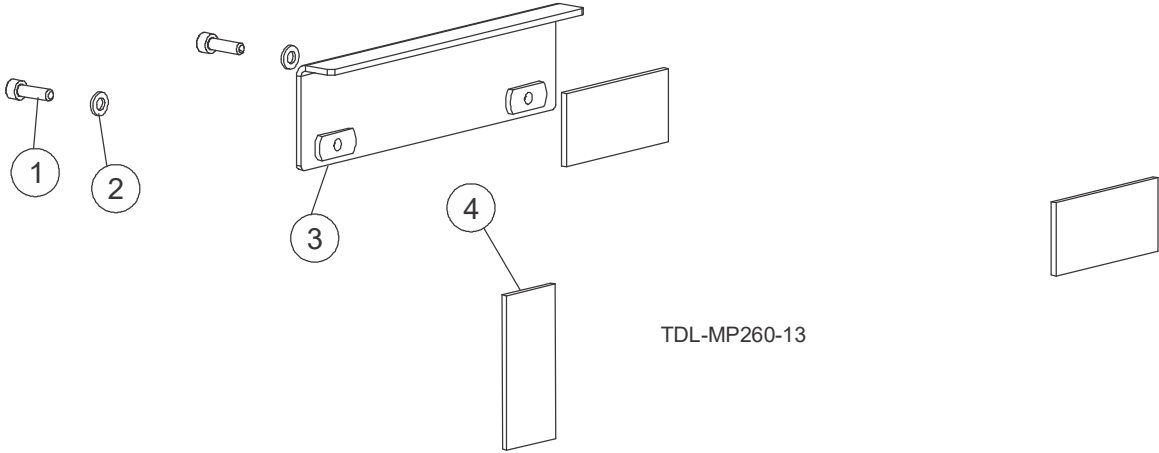
### 3.29 Feed Chain Tensioner



REF	DESCRIPTION (★ Indicates Parts Available in Assemblies Only)	PART #	QTY.
	<b>ASSY, CHAIN TENSION</b>	534390-US	1
1	Nut, M10-1.50 Hex Nyl Lock	F05004-270	1
2	Washer, M10 Flat SAE	F05011-134	3
3	Screw, Mount	534388-1-US	1
4	Roller, Tensioner	533576-US	1
5	Bolt, Shoulder 8mmDia x 16mmL Plain	f05021-25	1
6	Nut, M8-1.25 Free Zinc Plate	F05010-162	1
7	Bolt, M8-1.25x60 HH Class 8.8	F05021-15	1



**3.30 Feed Chain Slide**



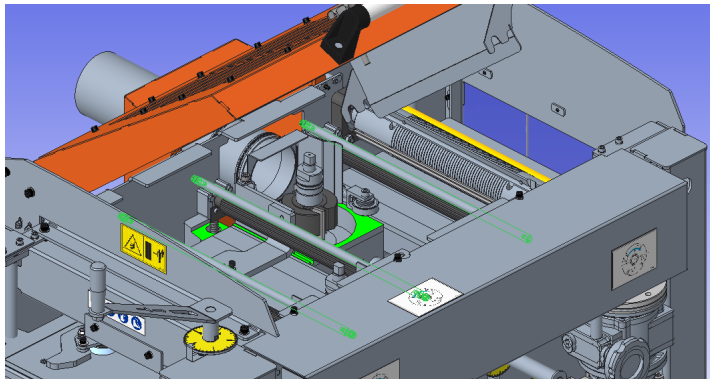
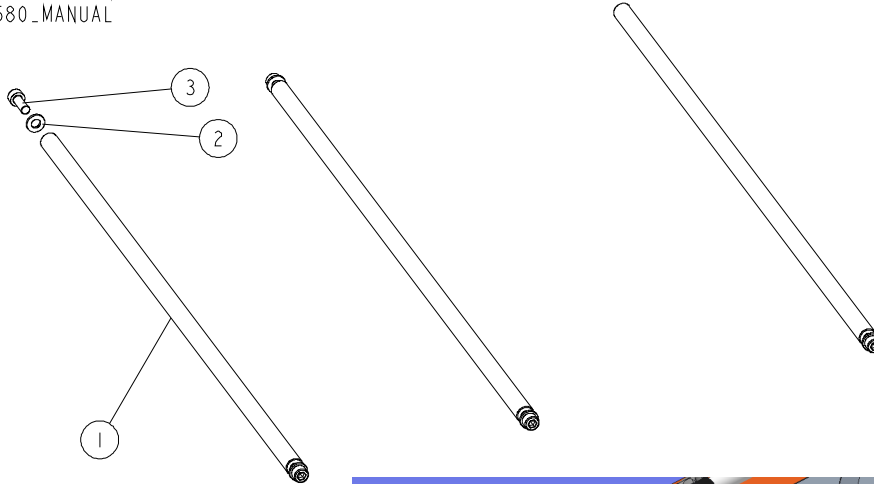
REF	DESCRIPTION (♦ Indicates Parts Available in Assemblies Only)	PART #	QTY.	
	<b>ASSY, CHAIN SLIDE</b>	537560-US	1	
1	Screw, M6-1 x 20 SHC	F05020-15	2	
2	Washer, M6 Flat Class 4	F05026-1	2	
3	Weldment, Angle Section Brkt	537560-1-US	1	
4	Slider, HDPE	537562-US	3	

# 3 Mechanical Assembly

## Spindle Moving Assembly

### 3.31 Rod Set

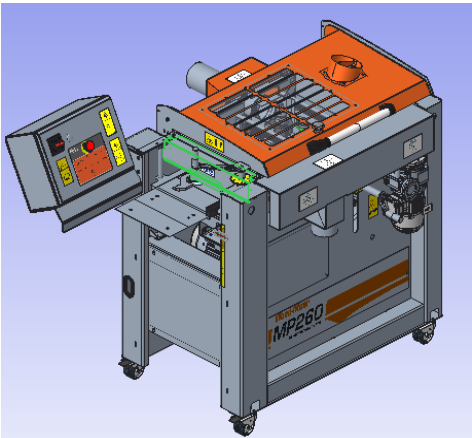
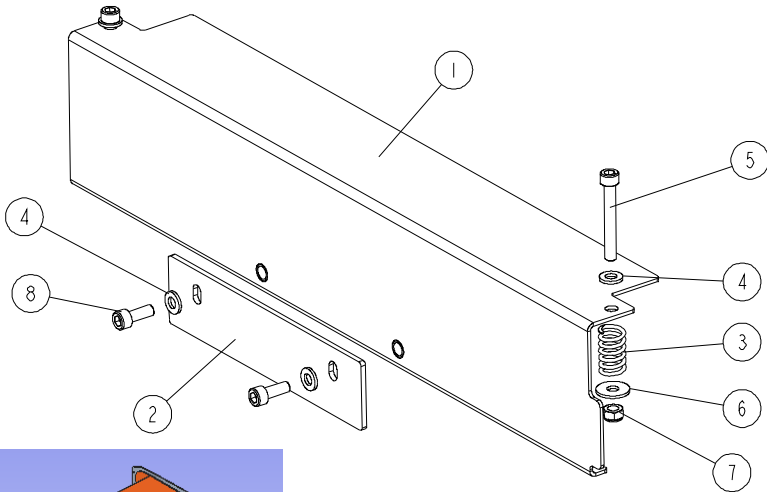
537580\_001\_EN  
537580\_MANUAL



REF	DESCRIPTION (♦ Indicates Parts Available in Assemblies Only)	PART #	QTY.
-	ROD SET	537580-US	1
1	SHAFT	533092-1-US	3
2	Washer, M6 Flat Class 4	F05026-1	5
3	Screw, M6-1 x 20 SHC	F05020-15	5

3.32 Moving Plate

537584\_001\_EN  
537584\_MANUAL



REF	DESCRIPTION (♦ Indicates Parts Available in Assemblies Only)	PART #	QTY.
	<b>ASSY, MOVING COVER</b>	537584-US	1
1	Weldment, Moving Cover	537583-US	1
2	Plate, 6-11/16x1-9/16x.120	537582-1-US	1
3	Spring, .58 ODx1 1/8	533677-US <sup>1</sup>	2
4	Washer, M6 Flat Class 4	F05026-1	4
5	Screw, M6-1.0x50mm SHC	F05020-86	2
6	Washer, M8 Flat	F05026-4	2
7	Nut, M6-1.0 Nylon Lock	F05010-200	2
8	Screw, M6-1.0 x 16mm SHCS	F05004-206	2

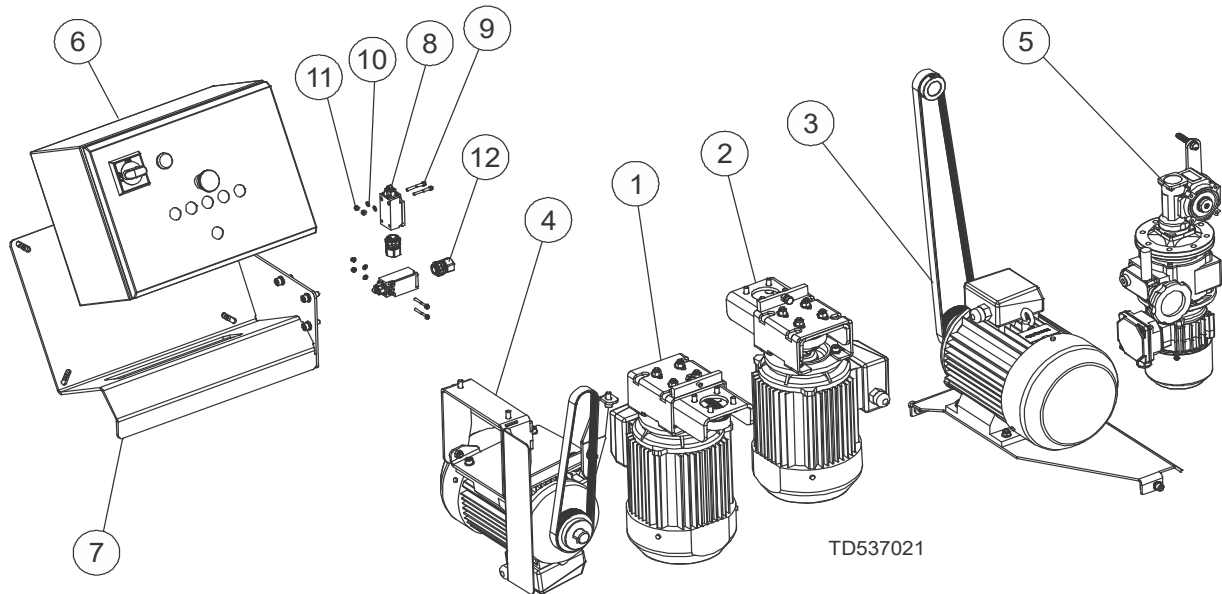
<sup>1</sup> ECN: 37866 : Replace (2) 021243 springs with 533677-US.

# 4 Motor Kits

## Motor Kit

### SECTION 4 MOTOR KITS

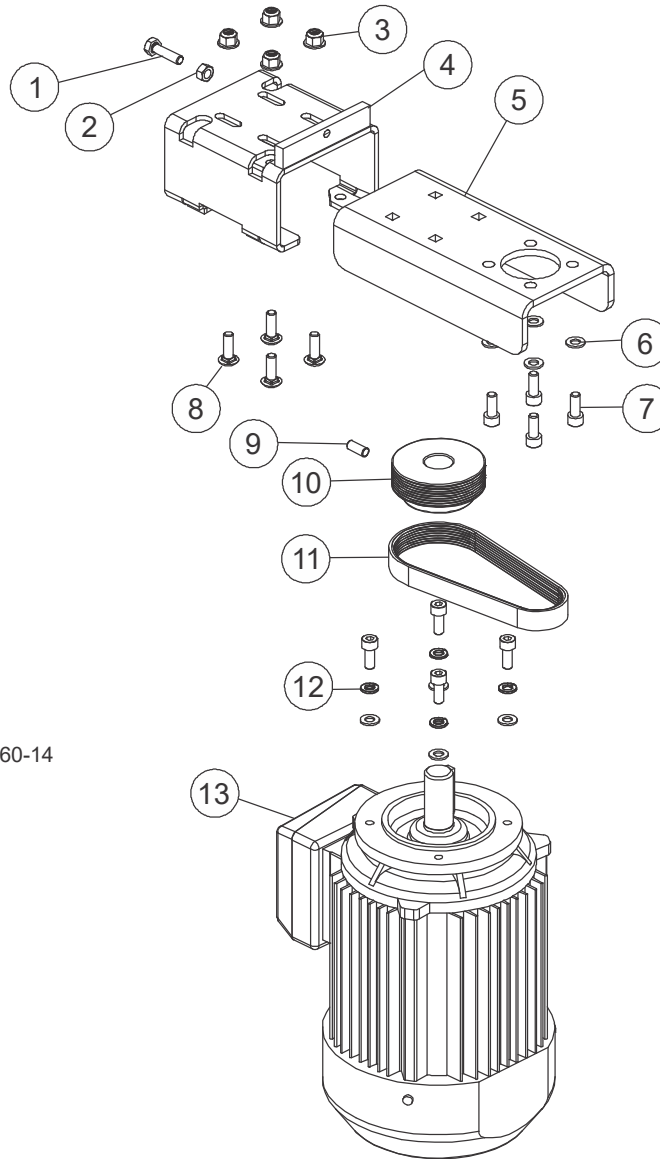
#### 4.1 Motor Kit



REF	DESCRIPTION (♦ Indicates Parts Available in Assemblies Only)	PART #	QTY.
	<b>ASSY, MOTOR KIT FOR MP260EA</b>	537021-6U-US	1
	<b>ASSY, MOTOR KIT FOR MP260EB</b>	537021-2U-US	1
1	Assy, Fixed Side Cutter Drive (MP260EA)	533647-6U-US-1	1
	Assy, Fixed Side Cutter Drive (MP260EB)	533647-U-US	1
2	Assy, Moveable Side Cutter Drive (MP260EA)	533647-6U-US	1
	Assy, Moveable Side Cutter Drive (MP260EB)	541459-US	1
3	Assy, Horizontal Upper Cutter Pro Drive (MP260EA)	537035-6U-US	1
	Assy, Horizontal Upper Cutter Pro Drive (MP260EB)	537035-U-US	1
4	Assy, Horizontal Bottom Cutter Drive (MP260EA)	537031-6U-US	1
	Assy, Horizontal Bottom Cutter Drive (MP260EB)	537031-U-US	1
5	Assy, MP260 Pro Feed Drive (MP260EA)	537036-6U-US	1
	Assy, MP260 Pro Feed Drive (MP260EB)	537036-U-US	1
6	Control Assy, MP260, 4-sided, 240V, 1Ph (MP260EA)	121144 <sup>1</sup>	1
	Control Assy, MP260, 4-sided, 240V, 3Ph (MP260EB)	532791-2U	1
7	Assy, Electric Box Bracket Complete	537032-US	1
8	Switch, Safety D4N-4132	537641	2
9	Screw, M4-0.7x35mm SHCS PK/50	F05020-81	.08
10	Washer, M4 Flat SS PK/100	F05011-132	.04
11	Nut, M4-.7 Class 8 Nylock	F05027-8	4
12	Connector, M20 0.17-0.45 Cord Grip	069753	2

<sup>1</sup> Control Assembly 532791-6U-US replaced by 121144 per ECN 37932, 05/10/2021.

## 4.2 Side Cutter Motor Assemblies



TDL-MP260-14

REF	DESCRIPTION (★ Indicates Parts Available in Assemblies Only)	PART #	QTY.
	ASSY, FIXED SIDE CUTTER DRIVE (MP260EA) <sup>1</sup>	533647-6U-US-1	1
	ASSY, MOVEABLE SIDE CUTTER DRIVE (MP260EA)	533647-6U-US	1
	ASSY, FIXED SIDE CUTTER DRIVE (MP260EB) <sup>2</sup>	533647-U-US	1
	ASSY, MOVEABLE SIDE CUTTER DRIVE (MP260EB)	541459-US	1
1	Bolt, M8-1.25 x 30 HH FT Class 8.8	F05021-18	1
2	Nut, M8-1.25 Swaged Hex	F05027-17	1
3	Nut, M8 x 1.25 Flanged Nylock	F05027-44	4
4	Weldment, MP200 Motor Mount	533649-1-US	1
5	Plate, Motor Adjustment	130952	1

## 4

**Motor Kits***Side Cutter Motor Assemblies*

REF	DESCRIPTION (♦ Indicates Parts Available in Assemblies Only)	PART #	QTY.	
6	Washer, M8 Flat Zinc 100PK	F05011-131	8	
7	Bolt, M8x1.25x20mm SHCS	F05005-150	8	
8	Bolt, M8-1.25 x 25 Carriage Class 8.8	F05021-17	4	
9	Screw, M8-1.25 x20 SHFP Set	F05021-7	1	
10	Pulley, 8PJx78.4mmx24mm	533585-US	1	
11	Belt, Multi-Groove 8 PJ 432(170J8)	533680-US	1	
12	Washer, M8 Split Lock	F05011-45	4	
13	MTR, 3kW, 3ph, 230/460, 60Hz, IE3, IMV19( <b>MP260EA Both Sides</b> )	537385-UL <sup>3</sup>	1	
	MTR, 2.7kW, 1ph, 230, 60Hz, IE3 IMB34/2 ( <b>MP260EA Both Sides</b> )	533651-UL	1	
	MOTOR NIDEC 3kW,2P, M90XL IMB14/C140 ( <b>MP260EB Both Sides</b> )	533646-UL	1	

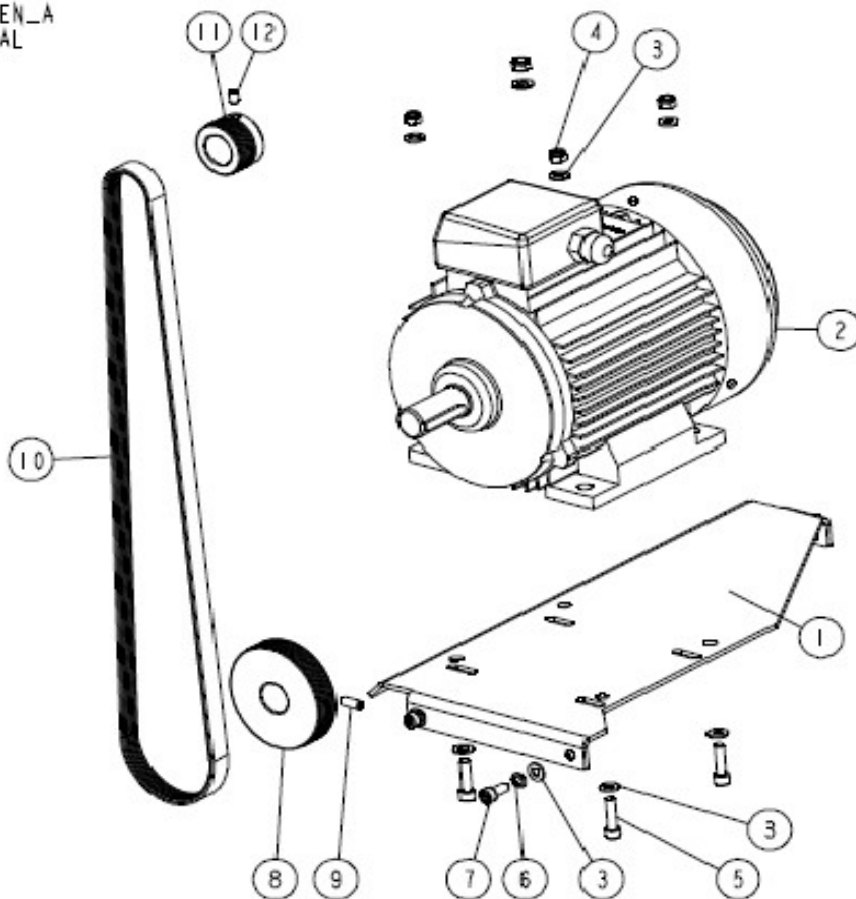
<sup>1</sup> 533647-6U-US-1 and 533647-6U-US differ only in orientation.

<sup>2</sup> 533647-U-US and 541459-US differ only in orientation.

<sup>3</sup> 537385-UL replaced 533651-UL after 11/30/2021 per ECN 38258

### 4.3 Horizontal Upper Cutter Drive

537035\_001\_EN\_A  
537035\_MANUAL

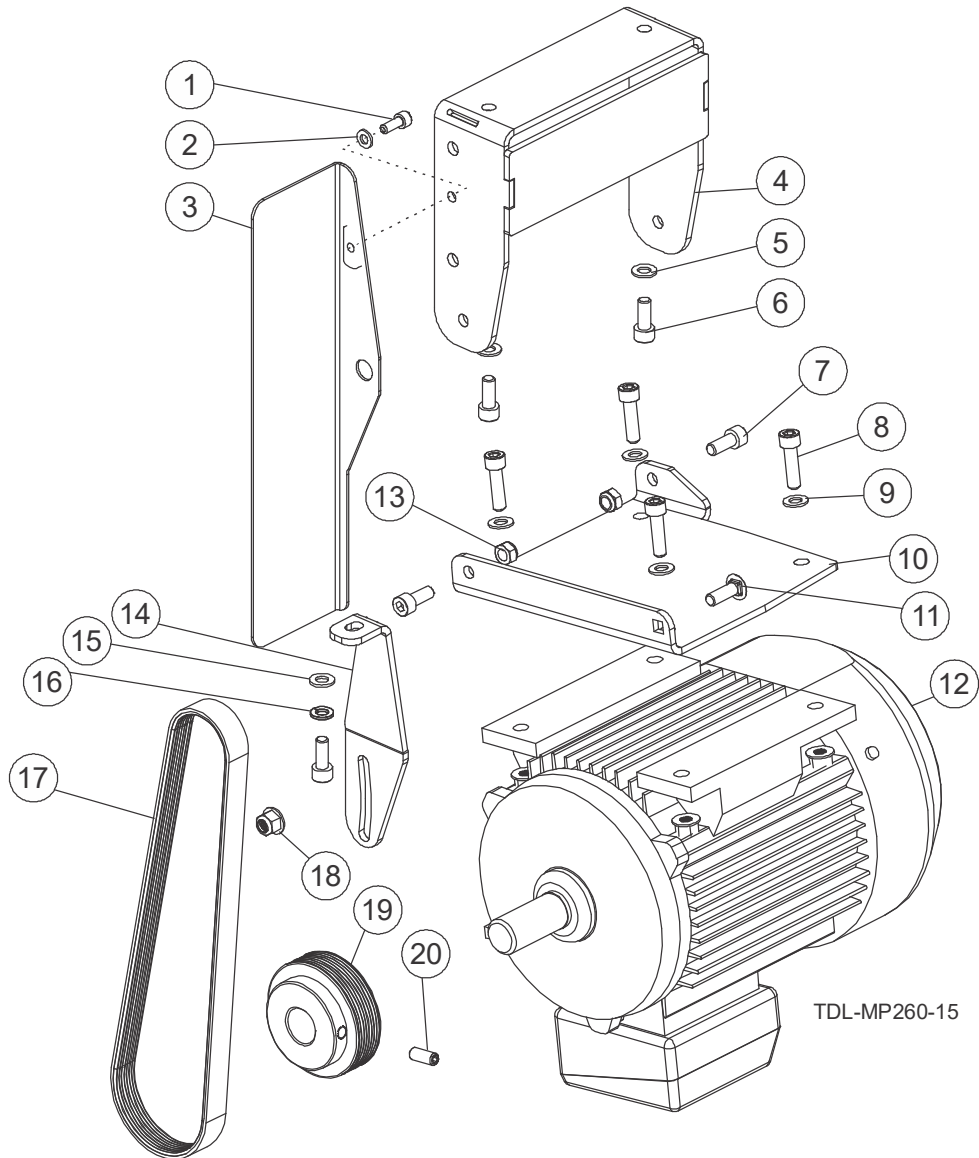


REF	DESCRIPTION (♦ Indicates Parts Available in Assemblies Only)	PART #	QTY.
	<b>ASSY, HORIZONTAL UPPER CUTTER PRO DRIVE (MP260EA)</b>	537035-6U-US	1
	<b>ASSY, HORIZONTAL UPPER CUTTER PRO DRIVE(MP260EB)</b>	537035-U-US	1
1	Wldmnt, Motor Plate	535895-1-US	1
2	MTR, 2.7kW, 1ph, 230, 60Hz, IE3 IMB34/2 (MP260EA)	533651-UL	1
3	Washer, M8 Flat	F05026-4	11
4	Nut, M8-1.25 Hex Nylock	F05010-132	4
5	Screw, M8-1.25 x 30 SHC	F05021-1	4
6	Washer, M8 Split Lock	F05011-45	3
7	Bolt, M8x1.25x20mm SHCS	F05005-150	3
8	Pulley, 8PJx78.4mmx28mm	533585-P-US	1
9	Screw, M8-1.25 x20 SHFP Set	F05021-7	1
10	Belt, Multi-Groove 8 PJ 1295(510J8)	537022-US	1
11	Pulley, 8PJx48mmx28mm	533586	1
12	Screw, M8-1.25x12mm SHSS Cup Point	F05021-53	1

# 4 Motor Kits

## Horizontal Bottom Cutter Drive

### 4.4 Horizontal Bottom Cutter Drive



REF	DESCRIPTION (♦ Indicates Parts Available in Assemblies Only)	PART #	QTY.
	<b>ASSY, HORIZONTAL BOTTOM CUTTER DRIVE (MP260EA)</b>	537031-6U-US	1
	<b>ASSY, HORIZONTAL BOTTOM CUTTER DRIVE(MP260EB)</b>	537031-U-US	1
	Assy, Belt Guard Assembly	537565-US	1
1	Screw, M6-1.0 x 16mm SHCS	F05004-206	1
2	Washer, M6 Flat Class 4	F05026-1	1
3	Weldment, Belt Guard	537565-1-US	1
	Assy, Motor Mount Assembly	537539-US	1
4	Weldment, Motor Mount	537538-1-US	1
5	Washer, M8 Flat	F05026-4	2

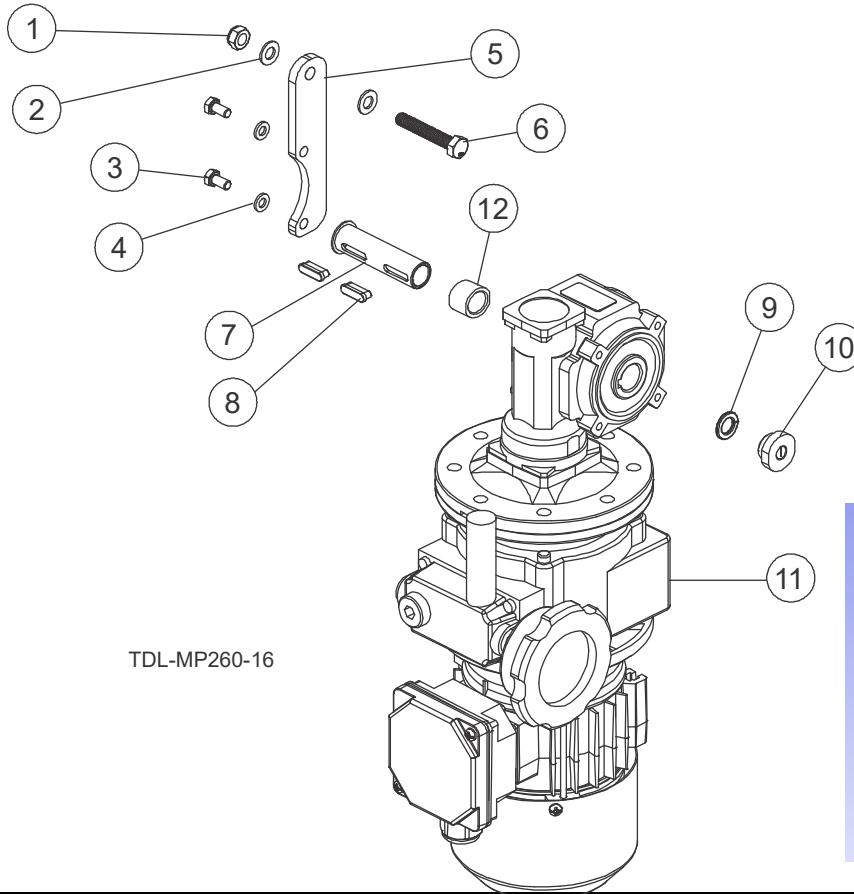


REF	DESCRIPTION (♦ Indicates Parts Available in Assemblies Only)	PART #	QTY.	
6	Bolt, M8x1.25x20mm SHCS	F05005-150	2	
7	Bolt, M8x1.25x20mm SHCS	F05005-150	3	
8	Screw, M8-1.25 x 30 SHC	F05021-1	4	
9	Washer, M8 Flat	F05026-4	4	
10	Bracket, Motor Plate	537023-1-US	1	
11	Bolt, M8-1.25 x 25 Carriage Class 8.8	F05021-17	1	
12	MTR, 3kW, 3ph, 230/460, 60Hz, IE3, IMB3	537386-UL	1	
13	Nut, M8-1.25 Hex Nylock	F05010-132	2	
14	Bracket, Mounting Bracket	537024-1-US	1	
15	Washer, M8 Split Lock	F05011-45	1	
16	Washer, M8 Flat Zinc 100PK	F05011-131	.01	
17	Belt, Multi-Groove 8 PJ 737(290J8)	535803-US	1	
18	Nut, M8 x 1.25 Flanged Nylock	F05027-44	5	
19	Pulley, 8PJx78.4mmx24mm	533585-US	1	
20	Screw, M8-1.25 x20 SHFP Set	F05021-7	1	

# 4 Motor Kits

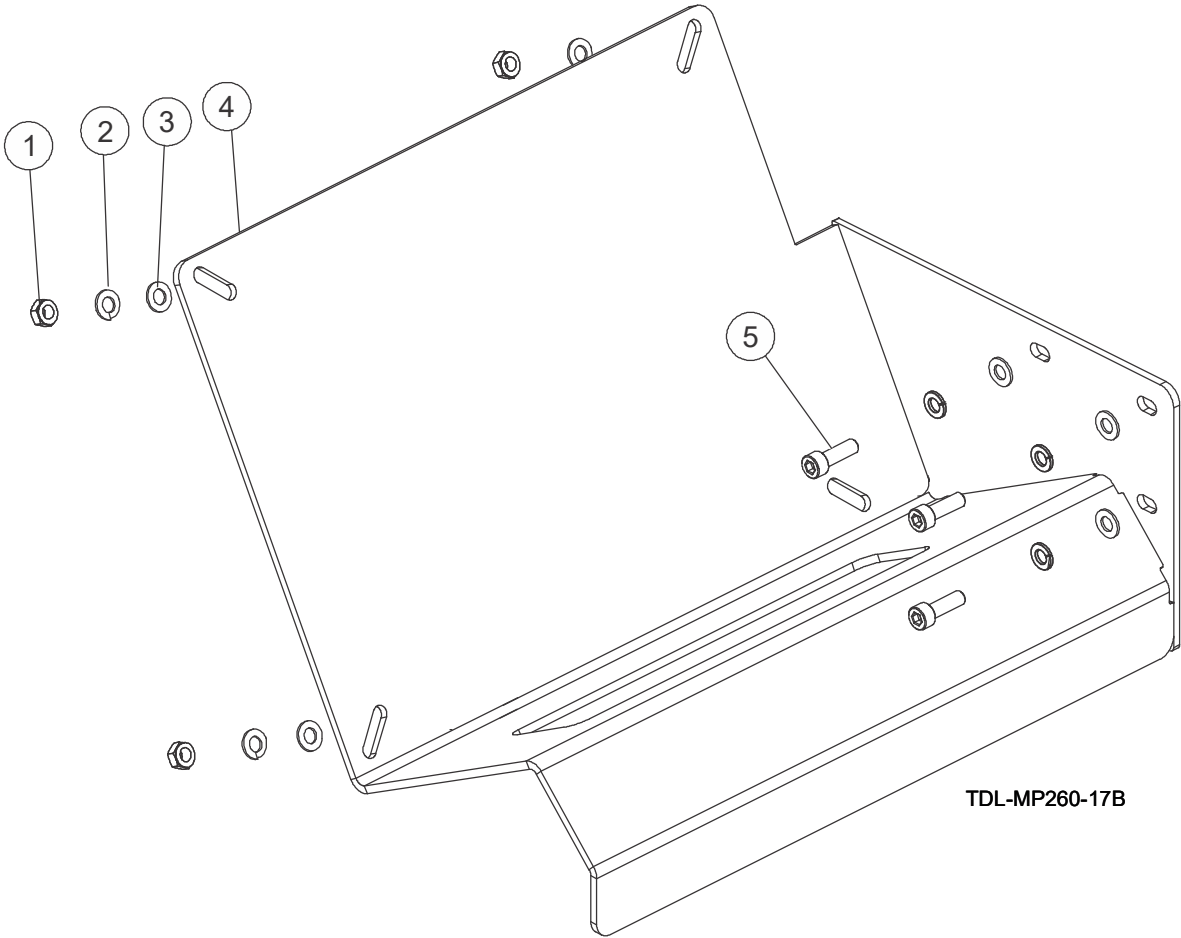
## Feed Drive

### 4.5 Feed Drive



REF	DESCRIPTION (♦ Indicates Parts Available in Assemblies Only)	PART #	QTY.
	<b>ASSY, MP260 PRO FEED DRIVE(MP260EA)</b>	537036-6U-US	1
	<b>ASSY, MP260 PRO FEED DRIVE (MP260EB)</b>	537036-U-US	1
1	Nut, M8-1.25 Hex Nylock	F05010-132	1
2	Washer, M8 Flat	F05026-4	2
3	Screw, M6-1x12 HHC FT GR8-8 Din 933	F05005-99	2
4	Washer, M6 Flat Class 4	F05026-1	2
5	Plate, Arm Torque	537037-1-US	1
6	Bolt, M8-1.25 x 50 HH FT Zinc	F05021-46	1
7	Bushing, Reducer	533731-US	1
8	Key, Stepped	533732-US	2
9	Washer, 10mm Split Lock	F05011-88	1
10	Nut, M10 (MP260EA)	533733-1-6U-US	
	Nut, M10 (MP260EB)	533733-1-US	1
11	MTR, 0.55kW, 1ph, 230V, 60Hz, IE3, IMB5	532807-UL	1
	Reducer, PRO KC40/P15+NF003+SKH63-2C	533640-UL	1
12	Bushing, Reducing (MP260EA ONLY)	541449-US	1

4.6 Electric Box Bracket



REF	DESCRIPTION (♦ Indicates Parts Available in Assemblies Only)	PART #	QTY.
	<b>ASSY, ELECTRIC BOX BRACKET COMPLETE</b>	537032-US	1
1	Nut, M8-1.25 Hex Nylock	F05010-162 <sup>1</sup>	4
2	Washer, M8 Split Lock	F05011-45	7
3	Washer, M8 Flat	F05026-4	7
4	Weldment, Electric Box Bracket	533619-1-US	1
5	Screw, M8-1.25x25 SHC BO	F05021-33	3

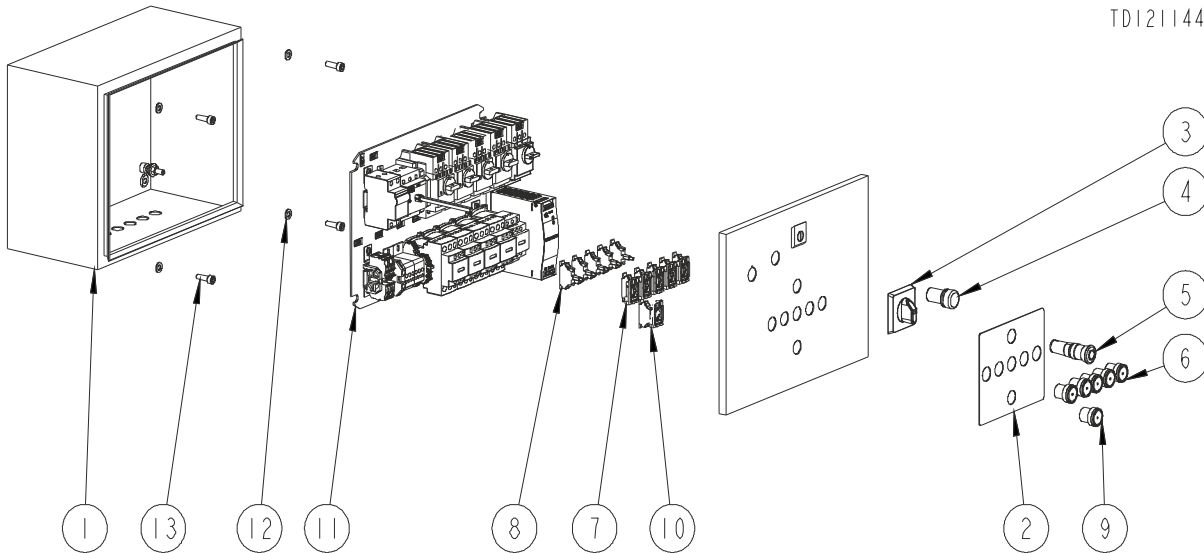
1. Hardware changes as of 5/21/2021 per ECN 37960: Removed F05010-132. Added F05010-162. F05011-45 (7) Was (3). F05021-33 (3) Was (7). F05026-4 (7) Was (11).

# 4 Motor Kits

## Electrical Box, MP260EA

### 4.7 Electrical Box, MP260EA

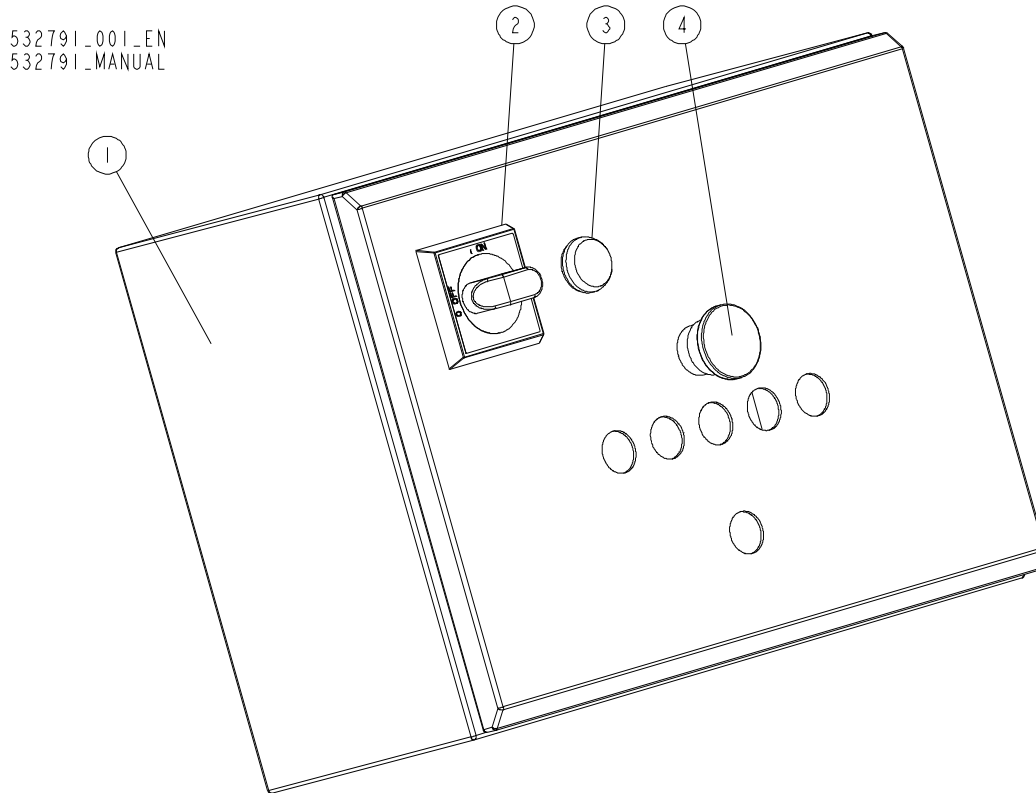
TD121144



REF	DESCRIPTION (♦ Indicates Parts Available in Assemblies Only)	PART #	QTY.
	<b>ASSY, CONTROL ENC. MP260 240VAC 1PH</b>	121144 <sup>1</sup>	1
1	Enclosure, Elec. Control MP260	121139	1
2	Decal, Control Panel MP260	121145	1
3	Handle, Disconnect RED/YEL 6mm Shaft	050883-1	1
4	Pilot Light, 24V White LED Monoblock	068321	1
5	E-Stop, Red, Monoblock, 1NC, Mushroom	121143	1
6	Switch Head, PB Green Flush Illum ZB5	052503	5
7	Collar, Mount 1NO ZB5	068952	5
8	Light Module, Green ZB5	068910	5
9	Push Button Head, Flush Red	127080	1
10	Collar, Mount 1NC ZB5	068950	1
11	Assy, Panel Insert, MP260 240V 1PH	121138	1
12	Washer, M8 Flat	F05026-4	4
13	Screw, M8-1.25x25 SHC BO	F05021-33	4

<sup>1</sup> For detailed information, please see the electrical manual.

## 4.8 Electrical Box, MP260EB

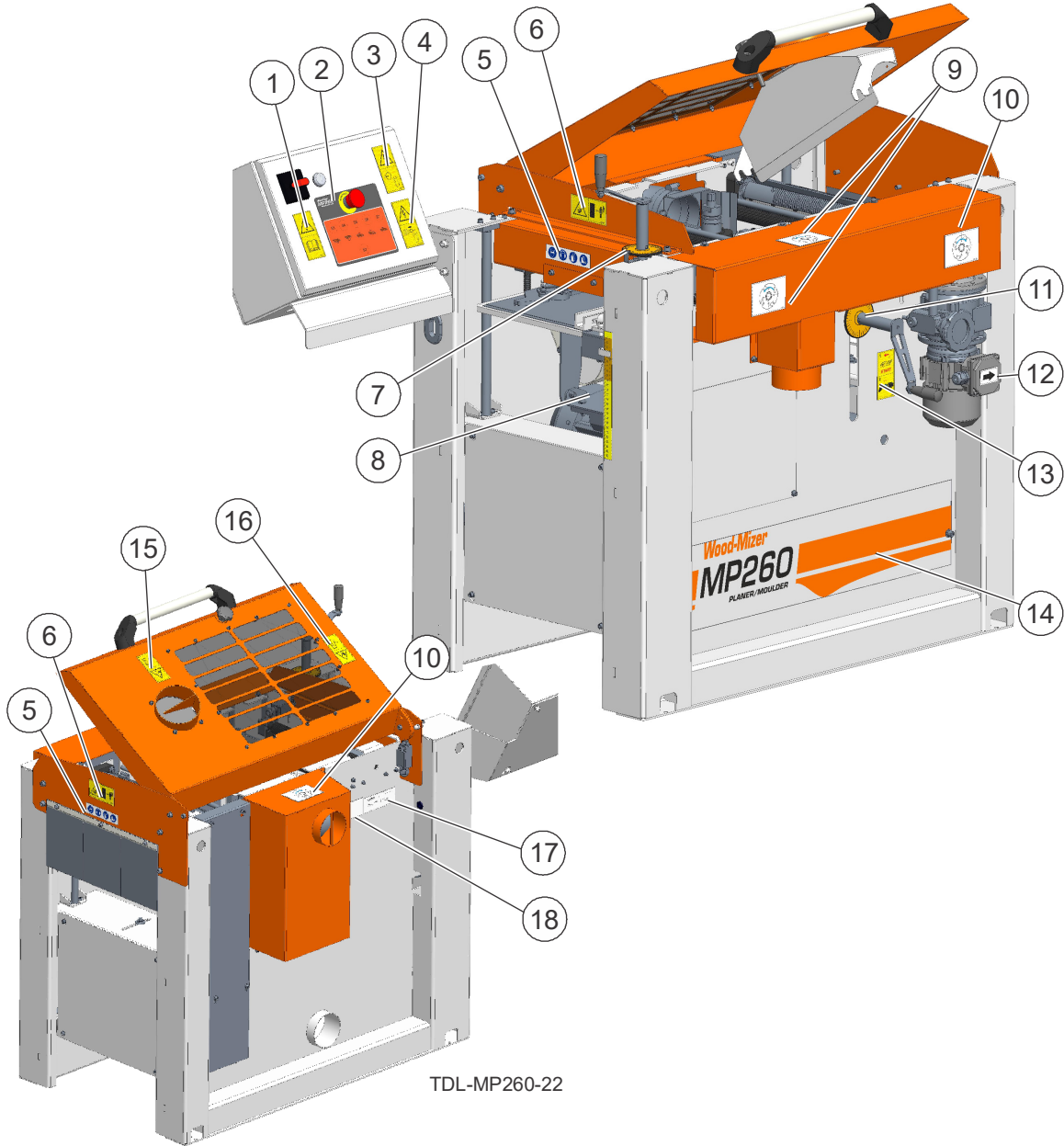


REF	DESCRIPTION (↗ Indicates Parts Available in Assemblies Only)	PART #	QTY.	
	<b>CONTROL ASSY, MP260, 4-SIDED, 240V, 3Ph (MP260EB)</b>	532791-2U <sup>1</sup>	1	
1	Electric Box	534148	1	
2	Handle, OHB S2a1 ABB Switch	502312-1	1	
3	Light, XB7EV7BP White Control	519612	1	
4	Button, Emergency Stop	502315	1	

<sup>1</sup> Also used on the MP260EA prior to ECN 37932, 05/10/2021.

## SECTION 5 DECALS

### 5.1 Decals MP260

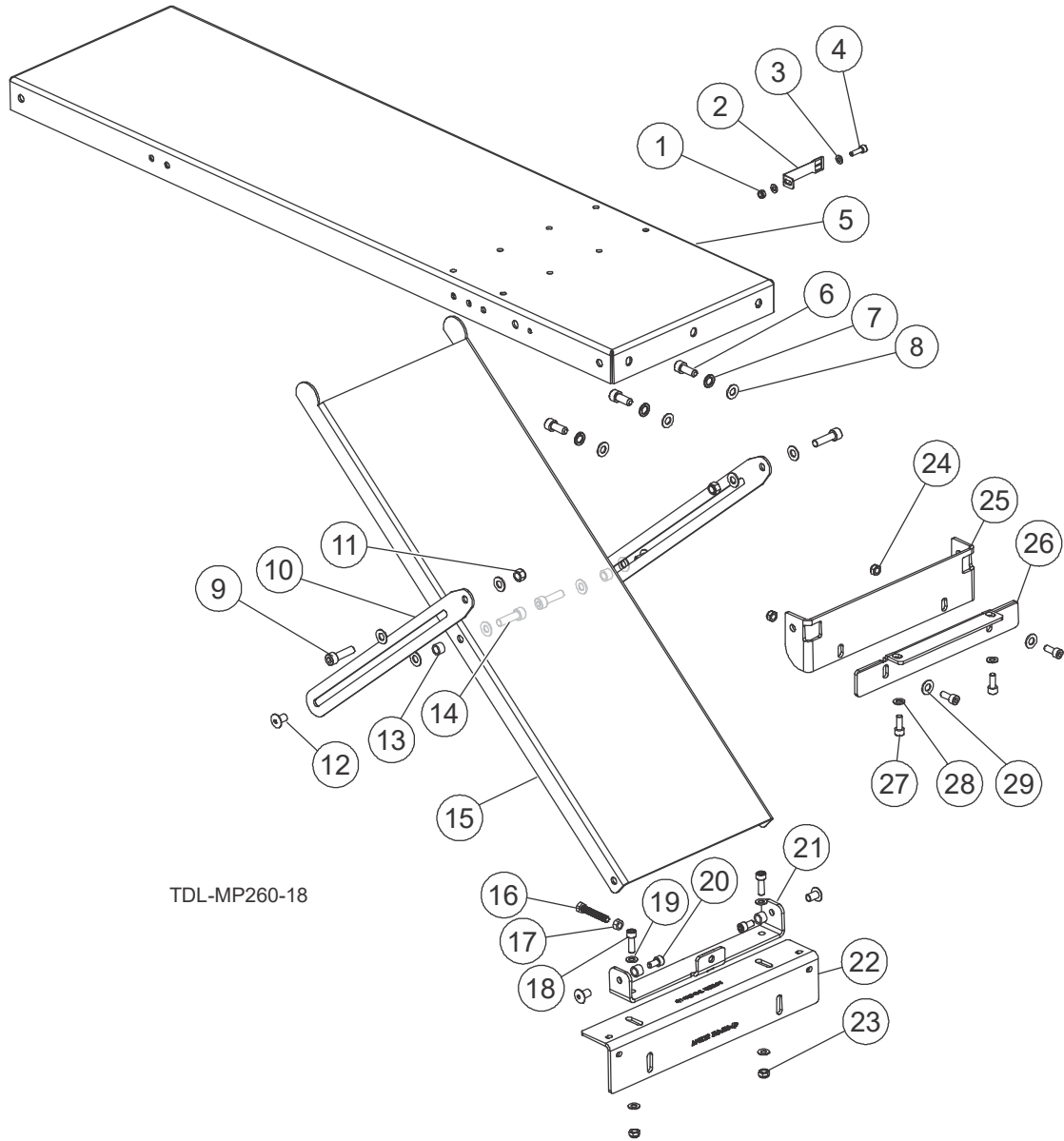


REF	DESCRIPTION (♦ Indicates Parts Available in Assemblies Only)	PART #	QTY.
	<b>DECAL KIT, MP260</b>	130953	1
1	Decal, Read The Operator Manual	96317	1
2	Decal, Control Panel MP260	541123-US	1

REF	DESCRIPTION (♦ Indicates Parts Available in Assemblies Only)	PART #	QTY.	
3	Decal, Hazardous Voltage Inside The Electric Box (Pictogram)	96316	1	
4	Decal, Remove The Plug Before Opening The Electric Box (Pictogram)	96319	1	
5	Decal - Warning Pictograms	535402	1	
6	Decal, Keep A Safe Distance Pictogram	99221	2	
7	Decal, MP260 Round Scale	533577-US	2	
9	Decal, Shaft Rotation Direction	539444-US	2	
10	Decal, Shaft Rotation Direction	536401-US	2	
11	Decal, Vertical Scale	533579-US	1	
12	Decal, Motor Direction	S20097	1	
13	Decal, Use Only When Feed Is On	535252-US	1	
14	Decal, MP260 Planer Type	541122-US	1	
15	Decal, Close Guards Before Operating	99220	1	
16	Decal, Hand Injury Hazard (Pictogram)	524993-US	1	
17	Decal, VIN Overlay	P09971	1	
18	Decal, ID Serial No.	015820	1	

## SECTION 6 OPTIONS

### 6.1 Infeed/Outfeed Tables



REF	DESCRIPTION (♦ Indicates Parts Available in Assemblies Only)	PART #	QTY.
	<b>ASSY, TABLE</b>	265-000-US	2
	Assy, Table	265-001-US	1
1	Assy, Indicator Gauge	117477	1
1	Nut, M6-1.0 Nylon Lock	F05010-200	1
2	Bracket, Indicator Gauge	117476	1
3	Washer, M6 Flat Class 4	F05026-1	2



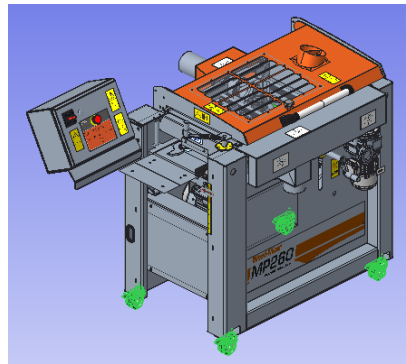
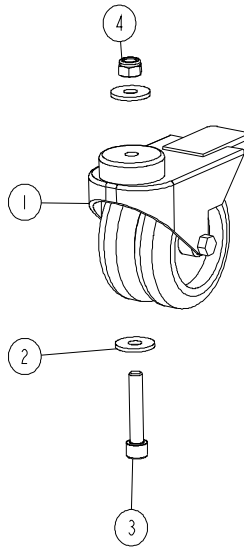
REF	DESCRIPTION (♦ Indicates Parts Available in Assemblies Only)	PART #	QTY.	
4	Screw, M6-1 x 20 SHC	F05020-15	1	
5	Bracket, Table	265-100-1-US	1	
6	Bolt, M10-1.5x25 SHC	F05022-12	3	
7	Washer, 10mm Split Lock	F05011-88	3	
8	Washer, M10 Flat SAE	F05011-134	9	
9	Plate, Guide	533728-1-US	2	
10	Nut, M10-1.50 Hex Nyl Lock	F05004-270	2	
11	NUT, ERICSON M8 AN88 COLLAR ZINC	f81032-33	4	
12	Bushing, 0.409 x 0.591 x 0.394	533724-US	4	
13	Bolt, M8x1.25x20mm SHCS	F05005-150	2	
14	Bracket, Support	265-101-1-US	1	
15	Bolt, M8-1.25 x 50 HH FT Zinc	F05021-46	1	
16	Nut, M8-1.25 Free Zinc Plate	F05010-162	1	
17	Screw, M8-1.25x25 SHC BO	F05021-33	2	
18	Washer, M8 Flat	F05026-4	8	
19	Screw, M8-1.25x16 SHC	F05021-10	2	
20	Weldment, Channel	541453-1-US	1	
21	Bracket, Angle	265-104-1-US	1	
22	Bolt, M10-1.50x35mm Lg SCS	F05004-220	2	
23	Nut, M8-1.25 Hex Nylock	F05010-132	2	
24	Nut, M8-1.25 Hex Nylock	F05010-132	2	
25	Bracket, Handle	265-106-2-US	1	
26	Bracket, Handle	265-102-1-US	1	
27	Bolt, M8x1.25x20mm SHCS	F05005-150	4	
28	Washer, M8 Flat	F05026-4	2	
29	Washer, M10 Flat SAE	F05011-134	2	

# 6 Options

## Castors

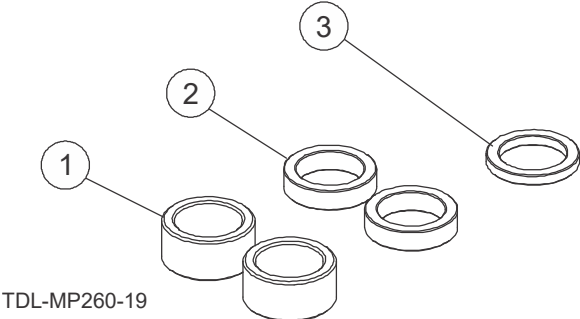
### 6.2 Castors

535163\_001  
535163\_MANUAL



REF	DESCRIPTION (♦ Indicates Parts Available in Assemblies Only)	PART #	QTY.
	<b>ASSY, CASTORS KIT, 4 PCS.</b>	535166	1
	Castor Wheel Assembly	535163	4
1	Dual Wheel Castor, KMDA-TPA 75S-HC	533510	1
2	Washer, ISO 7093-1-8-200 HV-A2E.	F81054-11	2
3	Screw, M8x40-8.8 Hex Socket Head Cap Zinc	F81002-29	1
4	Nut, M8-8-b Hex Nylon Zinc Lock	F81032-2	1

**6.3 Bushing Kit**



REF	DESCRIPTION (♦ Indicates Parts Available in Assemblies Only)	PART #	QTY.
	<b>KIT, MP260 BUSHING</b>	117362	1
1	Bushing, 1-5/8ODx1.183IDx0.795	533541-1-US	2
2	Bushing, 1-5/8ODx1.183IDx0.394	533539-1-US	2
3	Bushing, 1-5/8ODx1.183IDx0.205	533540-1-US	1