

**Wood-Mizer® Moulder Planer**  
**Safety, Setup, Operation,**  
**and Maintenance**

---

MP260EA13U-V	rev. B2.00-B2.01
MP260EB13U-V	rev. B2.00-B2.01

---

***Safety is our #1 concern!***

*Form #2411-US*



**WARNING! Read and understand this manual before using this machine.**

## California

### Proposition 65 Warning



**WARNING:** Breathing gas/diesel engine exhaust exposes you to chemicals known to the State of California to cause cancer and birth defects or other reproductive harm.

Always start and operate the engine in a well-ventilated area.  
If in an enclosed area, vent the exhaust to the outside.  
Do not modify or tamper with the exhaust system.  
Do not idle the engine except as necessary.

For more information go to [www.P65warnings.ca.gov](http://www.P65warnings.ca.gov).



**WARNING:** Drilling, sawing, sanding or machining wood products can expose you to wood dust, a substance known to the State of California to cause cancer. Avoid inhaling wood dust or use a dust mask or other safeguards for personal protection.

For more information go to [www.P65Warnings.ca.gov/wood](http://www.P65Warnings.ca.gov/wood).

### Active Patents assigned to Wood-Mizer, LLC

Wood-Mizer, LLC has received patents that protect our inventions which are a result of a dedication to research, innovation, development, and design. Learn more at: [woodmizer.com/patents](http://woodmizer.com/patents)

### ©2024 Wood-Mizer LLC

Printed in the United States of America, all rights reserved. No part of this manual may be reproduced in any form by any photographic, electronic, mechanical or other means or used in any information storage and retrieval system without written permission from

**Wood-Mizer, LLC**  
**8180 West 10th Street**  
**Indianapolis, Indiana 46214**

**SECTION 1 REPLACEMENT PARTS**

1.1 How To Use The Parts List..... 1-1  
     *To Order Parts* ..... 1-1  
 1.2 Sample Assembly..... 1-1  
 1.3 Torque Values..... 1-2

**SECTION 2 OVERVIEW**

2.1 MP260 Components ..... 2-1  
 2.2 MP260 Additional Part Kit ..... 2-2

**SECTION 3 MECHANICAL ASSEMBLY**

3.1 Covers ..... 3-1  
 3.2 Table MP260 ..... 3-2  
 3.3 Right Spindle Assembly ..... 3-4  
 3.4 Bottom Cutterhead ..... 3-5  
 3.5 Infeed and Outfeed Fences ..... 3-6  
 3.6 Feed Assembly ..... 3-7  
 3.7 Drive Shaft Assemblies ..... 3-8  
 3.8 Slide Bearing Assembly..... 3-9  
 3.9 Tension Plate ..... 3-10  
 3.10 Cutterhead Assembly (Upper) ..... 3-11  
 3.11 Bearing Housing ..... 3-12  
 3.12 Right Guard ..... 3-13  
 3.13 Sawdust Outlet Guard ..... 3-14  
 3.14 Side Guard..... 3-15  
 3.15 Left Guard ..... 3-16  
 3.16 Sawdust Outlet Guard ..... 3-17  
 3.17 Top Cover ..... 3-18  
 3.18 Sawdust Outlet ..... 3-19  
 3.19 V-belt Cover ..... 3-20  
 3.20 Spindle Moving Assembly ..... 3-21  
 3.21 Pressure Roller Assembly II ..... 3-23  
 3.22 Left Spindle Assembly ..... 3-24  
 3.23 Clamp Roller Assembly ..... 3-25  
 3.24 Side Feed Assembly ..... 3-26  
 3.25 Up/Down Feed Assembly ..... 3-27  
 3.26 Up/Down Feed Scale ..... 3-29  
 3.27 Moveable Cutter Handle ..... 3-30  
 3.28 Up/Down Feed Handle ..... 3-31  
 3.29 Feed Chain Tensioner ..... 3-32  
 3.30 Feed Chain Slide ..... 3-33  
 3.31 Rod Set ..... 3-34  
 3.32 Moving Plate ..... 3-35

**SECTION 4 MOTOR KITS**

4.1 Motor Kit ..... 4-1  
 4.2 Side Cutter Motor Assemblies ..... 4-2  
 4.3 Horizontal Upper Cutter Drive ..... 4-4  
 4.4 Horizontal Bottom Cutter Drive ..... 4-5

# Table of Contents

# Section-Page

4.5	Feed Drive .....	4-7
4.6	Electric Box Bracket.....	4-8
4.7	Electrical Box, MP260EA.....	4-9
4.8	Electrical Box, MP260EB .....	4-10

## SECTION 5 DECALS

5.1	Decals MP260 .....	5-1
-----	--------------------	-----

## SECTION 6 OPTIONS

6.1	Infeed/Outfeed Tables .....	6-1
6.2	Castors .....	6-3
6.3	Bushing Kit.....	6-4

## SECTION 1 REPLACEMENT PARTS

### 1.1 How To Use The Parts List

- Use the table of contents to locate the assembly that contains the part you need.
- Go to the appropriate section and locate the part in the illustration.
- Use the number pointing to the part to locate the correct part number and description in the table.
- Parts shown indented under another part are included with that part.

#### To Order Parts

- From the continental US, call **1-800-525-8100** to order parts. Have your customer number, vehicle identification number, and part numbers ready when you call.
- From other international locations, contact the Wood-Mizer distributor in your area for parts.

### 1.2 Sample Assembly



REF	PART #	DESCRIPTION	COMMENTS	QTY.
	012345	SAMPLE ASSEMBLY, COMPLETE	INCLUDES ITEMS 1-6	1
1	F02222-22	Sample Part		1
2	F03333-33	Sample Part		2
	098765	Sample Subassembly	Includes items 3-6	1
3	S04444-44	Subassembly Sample Part		1
4	K55555	Subassembly Sample Part		1
	054321	Sample Sub-Subassembly	Includes items 5-6	2
5	022222	Sub-Subassembly Sample Part		1
6	F10234-56	Sub-Subassembly Sample Part		1

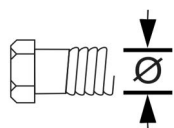
The Sample Assembly, Complete, part number 02345 (top level assembly) includes two parts (F0222-22 and F0333-33) and the 098765 subassembly.

Subassembly 098765 contains two parts(S04444-44 and K55555) and two copies of sub-subassembly 054321.

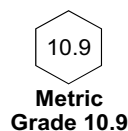
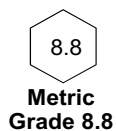
Each sub-subassembly 054321 contains two parts (022222 and F10234-56).

### 1.3 Torque Values

Grade		Units	SAE 5	SAE 8
Grade Mark				
Bolt Dia.	Threads Per In.	Units	SAE 5	SAE 8
6	32	in-lbs (Nm)	20 (2.3)	-
8	32	in-lbs (Nm)	24 (2.7)	30 (3.4)
10	24	in-lbs (Nm)	35 (4.0)	45 (5.1)
10	32	in-lbs (Nm)	40 (4.5)	50 (5.7)
12	24	in-lbs (Nm)	50 (5.7)	65 (7.3)
1/4	20	in-lbs (Nm)	95 (10.7)	125 (14.1)
1/4	28	in-lbs (Nm)	95 (10.7)	150 (17.0)
5/16	18	ft-lbs (Nm)	17 (22.6)	23 (31.2)
5/16	24	ft-lbs (Nm)	20 (27.1)	25 (33.8)
3/8	16	ft-lbs (Nm)	30 (40.7)	40 (54.2)
3/8	24	ft-lbs (Nm)	35 (47.5)	45 (61.0)
7/16	14	ft-lbs (Nm)	50 (67.8)	65 (88.1)
7/16	20	ft-lbs (Nm)	55 (74.6)	70 (94.9)
1/2	13	ft-lbs (Nm)	75 (101.7)	100 (135.6)
1/2	20	ft-lbs (Nm)	85 (115.3)	110 (149.2)
9/16	12	ft-lbs (Nm)	105 (142.4)	135 (183.1)
9/16	18	ft-lbs (Nm)	115 (155.9)	150 (203.4)
5/8	11	ft-lbs (Nm)	150 (203.4)	195 (264.4)
5/8	18	ft-lbs (Nm)	160 (217.0)	210 (284.8)
3/4	10	ft-lbs (Nm)	170 (230.5)	220 (298.3)
3/4	16	ft-lbs (Nm)	175 (237.3)	225 (305.1)
7/8	9	ft-lbs (Nm)	302 (409.5)	473 (640.9)
7/8	14	ft-lbs (Nm)	300 (406.8)	400 (542.4)
1	8	ft-lbs (Nm)	466 (631.8)	714 (967.4)



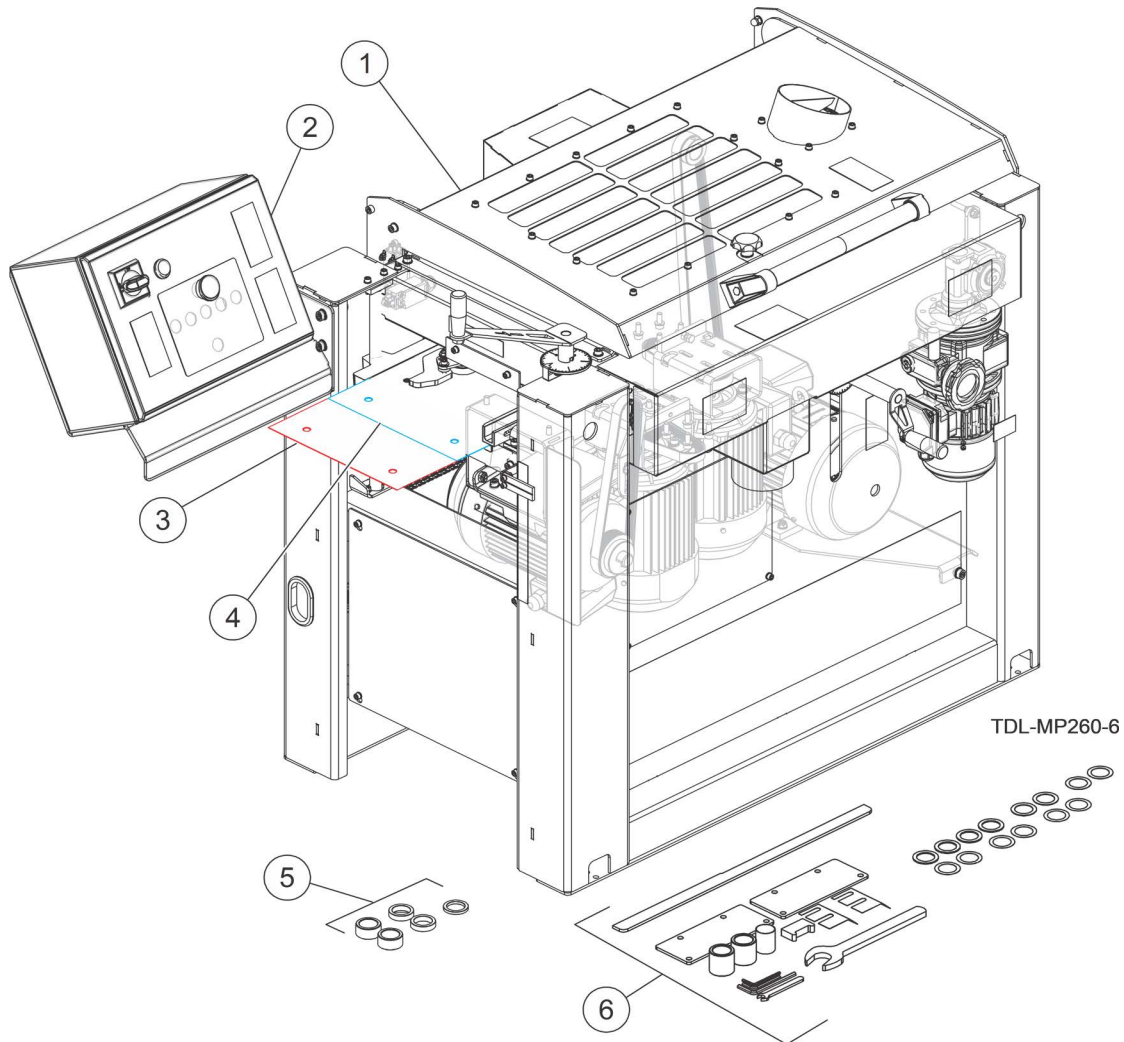
Metric Bolt Head Identification



COARSE THREAD					FINE THREAD				Wrench Size	
Diameter & Thread Pitch	Metric 8.8		Metric 10.9		Diameter & Thread Pitch	Metric 8.8		Metric 10.9		
	N-m	lbs-ft	N-m	lbs-ft		N-m	lbs-ft	N-m		lbs-ft
6 x 1.0	8	6	11	8					10 mm	
8 x 1.25	20	15	27	20	8 x 1.0	21	16	29	22	13 mm
10 x 1.5	39	29	54	40	10 x 1.25	41	30	57	42	16 mm
12 x 1.75	68	50	94	70	12 x 1.25	75	55	103	76	18 mm
14 x 2.0	109	80	151	111	14 x 1.5	118	87	163	120	21 mm
16 x 2.0	169	125	234	173	16 x 1.5	181	133	250	184	24 mm
18 x 2.5	234	172	323	239	18 x 1.5	263	194	363	268	27 mm
20 x 2.5	330	244	457	337	20 x 1.5	367	270	507	374	30 mm
22 x 2.5	451	332	623	460	22 x 1.5	495	365	684	505	34 mm
24 x 3.0	571	421	790	583	24 x 2.0	623	459	861	635	36 mm
30 x 3.0	1175	867	1626	1199	30 x 2.0	1258	928	1740	1283	46 mm

## SECTION 2 OVERVIEW

### 2.1 MP260 Components

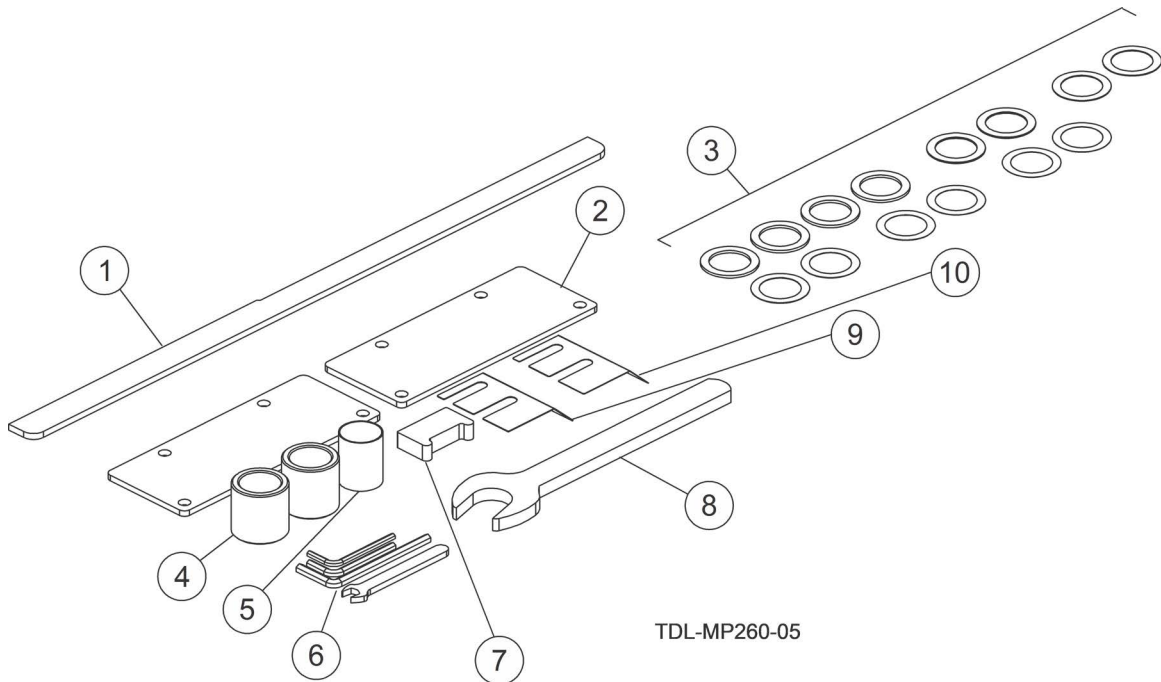


REF	PART #	DESCRIPTION	COMMENTS	QTY.
	MP260EA13U-V -US	<b>MP260 PRO M4-SIDED MOULDER 230V 1P W/ FD</b>		1
1	537000-US	Assy, MP260 Mechanical Assembly	<a href="#">See Section SECTION 3 Mechanical Assembly</a>	1
2	537021-6U-US	Assy, Motor Kit For MP260AB		1
3	537576-1-US	Plate, Shim 1		1
4	537577-1-US	Plate, Shim 2		1
5	117362	Kit, MP260 Bushing (Optional)	<a href="#">See Section SECTION 6 Options</a>	1
6	537645-US	Assy, MP260 Additional Part Kit		1

# 2

## Overview MP260 Components

### 2.2 MP260 Additional Part Kit



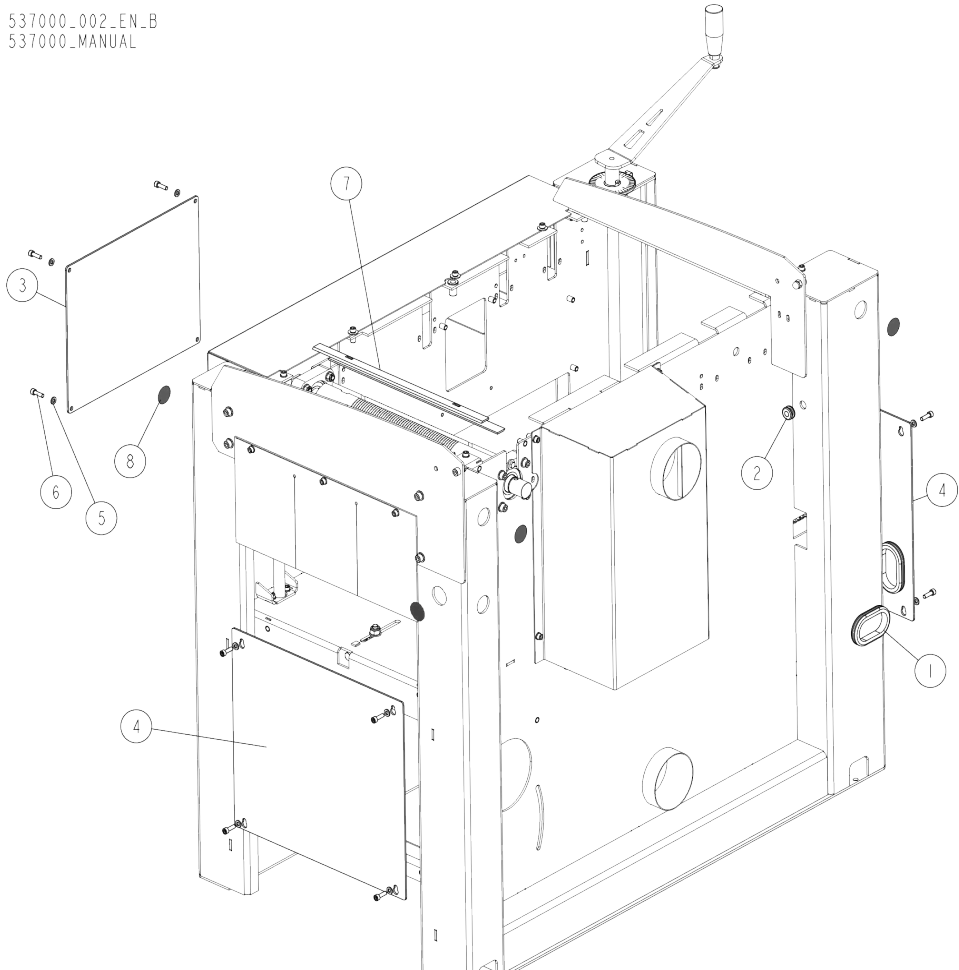
REF	PART #	DESCRIPTION	COMMENTS	QTY.
	537645-US	<b>ASSY, MP260 ADDITIONAL PART KIT</b>		
1	360-911	Bar, Regulating bar		1
2	537646-1-US	Plate, Additional Plate MP260		1
3	117361	Kit, MP Shims		1
4	533848-1-US	Bushing, 1-5/8ODx1.185IDx1.583		2
5	537654-US	Bushing, 1.181IDx1.249ODx1.566		1
6	535185-US	MP160 Wrench Kit		1
	092915-US	Wrench, 5mm Hex		1
	093368-US	Wrench, 4mm Hex		1
	535177-1-US	Wrench, 10mm Flat		1
	535186-US	Wrench, 6mm Hex		1
7	534770-US	Plate, Knife Alignment Tool		1
8	537649-US	Wrench, 30mm Flat		1
9	533502-US	Bracket, Cutter Guard		1
10	537648-US	Bracket, Cutter Guard		1



# SECTION 3 MECHANICAL ASSEMBLY

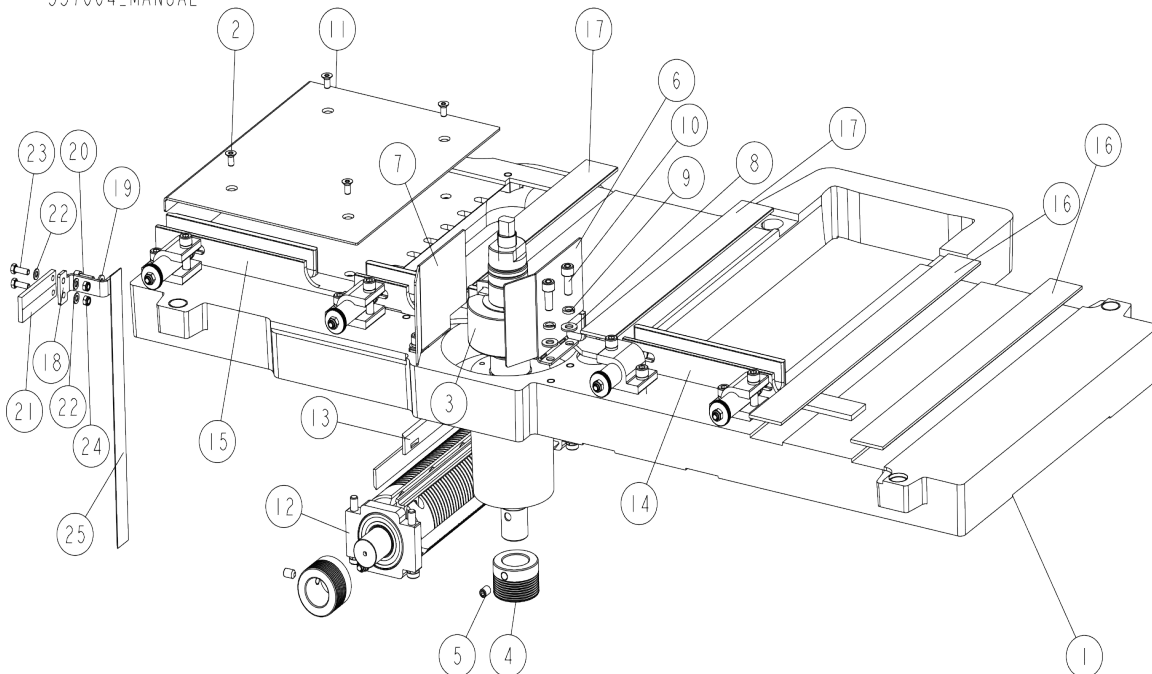
## 3.1 Covers

537000\_002\_EN\_B  
537000\_MANUAL



REF	PART #	DESCRIPTION	COMMENTS	QTY.
1	087065	Grommet, Rubber		2
2	025248	Grommet, Rubber 3/8 ID		1
3	537567-1-US	Front Small Cover		1
4	533096-1-US	Plate, Side		2
5	F05026-1	Washer, M6 Flat Class 4		12
6	F05020-15	Screw, M6-1 x 20 SHC		12
7	TPK410.20MP	Knife, Planer, 260upr/360lwr 410mm notch (Upper cutter, single knife)		2

## 3.2 Table MP260

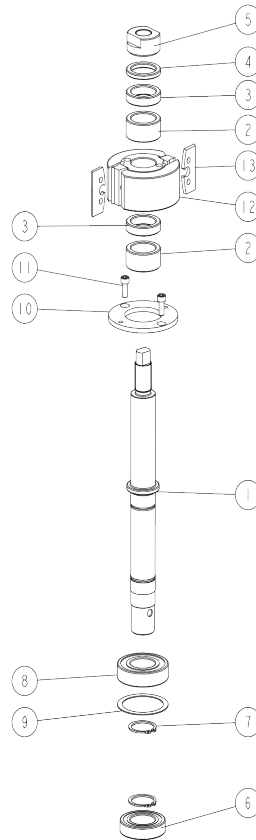
537004\_001\_EN\_B  
537004\_MANUAL

REF	PART #	DESCRIPTION	COMMENTS	QTY.
-	537004-US	<b>ASSEMBLY, MP260 MECHANICAL</b>		1
1	260-512B	Table MP260		1
2	F81001-54	Screw, M6-1.0x12mm HSFH, 10.9 Zinc		4
3	537135-US	Right Spindle Assembly	<a href="#">See Section 3.3</a>	1
4	533586	Pulley, 8Pjx48mmx28mm		2
5	F81002-105	Screw, M8-1.0x12mm SHSS Cup Point		2
6	537006-US	Bracket, Fence		1
7	537007-US	Bracket, Fence2		1
8	F05026-4	Washer, M8 Flat		5
9	F05011-45	Washer, M8 Split Lock		4
10	F05005-150	Bolt, M8x1.25x20mm SHCS		4
11	537563-1-US	Bracket, Table Plate 1		1
12	537568	Assy, Cutterhead; 72D x 300L mm; 4kn	<a href="#">See Section 3.4</a>	1
13	TPK300.20MP	Knife, Planer; HSS; 300mm (11.8") L w/ Notch		2
14	537570	Fence 1, Assembly	<a href="#">See Section 3.5</a>	1
15	537572	Fence 2, Assembly	<a href="#">See Section 3.5</a>	1
16	537573-US	Slide Plate 1		2
17	537574-US	Slide Plate 2		2
18	537559-1	Bracket, Indicator, Scale		1

REF	PART #	DESCRIPTION	COMMENTS	QTY.
19	F05011-129	Washer, M5 Flat SS PK/100		2
20	F05021-10	Screw, M8-1.25x16 SHC		1
21	094821	Indicator, Blade Width Scale		1
22	F05011-129	Washer, M5 Flat SS PK/100		2
23	F05004-259	Screw, M5-0.8x16mm SHCS SS PK/50		2
24	F05027-3	Nut, M5-.8 Class 8 Hex Nylock		2
25	533579-US	Decal, Vertical Scale		1

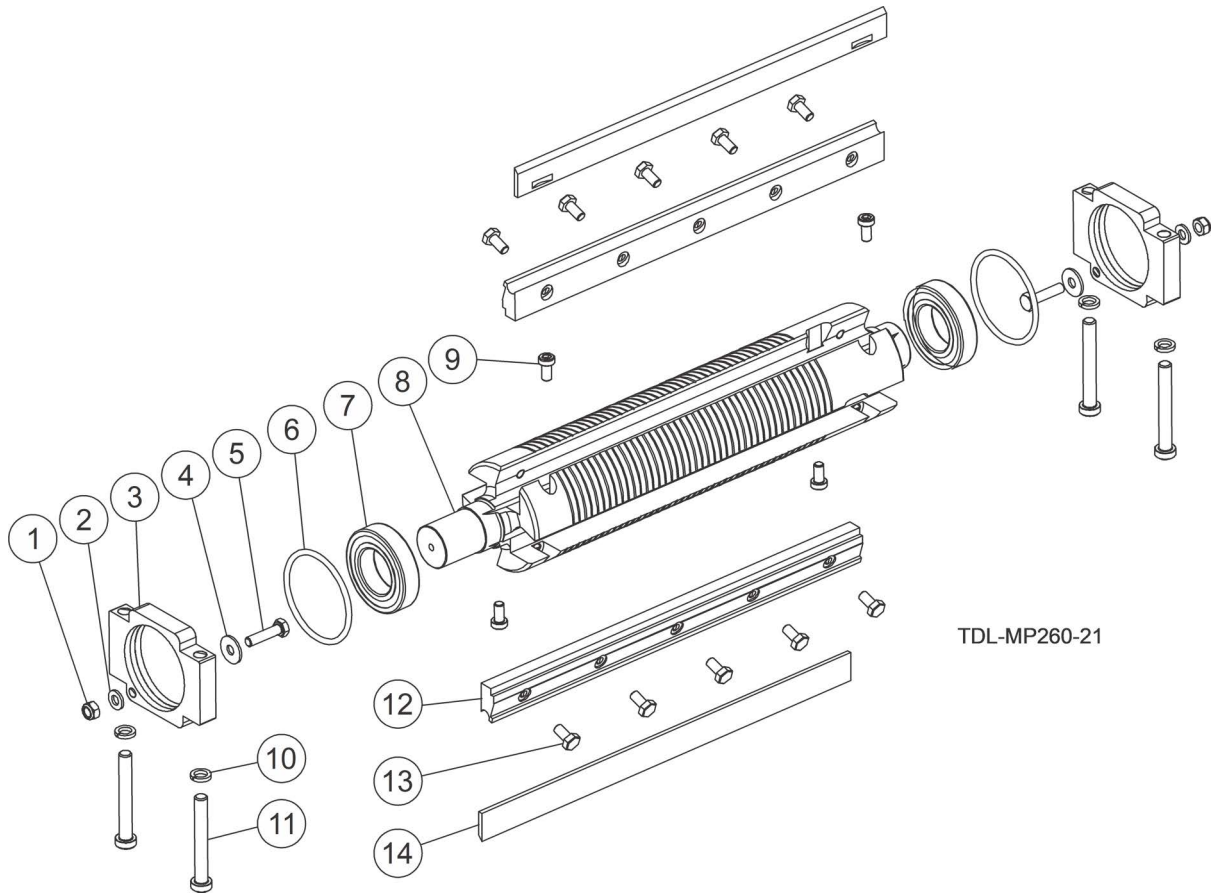
### 3.3 Right Spindle Assembly

537135\_001\_EN  
537135\_MANUAL



REF	PART #	DESCRIPTION	COMMENTS	QTY.
-	537135-US	<b>RIGHT SPINDLE ASSEMBLY</b>		1
1	537134-US	Shaft, MP260		1
2	533541-1-US	Bushing, 30/42-20.2 Zinc-plated		2
3	533539-1-US	Bushing, 30/42-10 Zinc-plated		2
4	533540-1-US	Bushing, 30/42-5.2 Zinc-plated		1
5	535886-1	Bushing, 1-5/8xM20-1.5x25/32		1
6	096191	Bearing, 6006 2rsr		1
7	F81090-23	Outside Retaining Ring Z30 Pn-m/85111 Din 471		2
8	100787	Bearing, 6206 2rsr P6 Rolling (Fag, Nsk, Skf)		1
9	533543-US	Plate, Washer MP260		1
10	533542-1-US	Plate, Clamping		1
11	F05004-206	Screw, M6-1.0 x 16mm SHCS		2
12	TG56.2K	Cutterhead, 93D x 40L x 30B mm; Side 2kn		1
	240-010	Cutterhead, 88D x 40L x 30B mm; Side 2kn		1
13	TPK50.024.4TB	Knives, Cutter ( <b>set of 2</b> )		1
	KIL-TB90-92S	Wedge		1

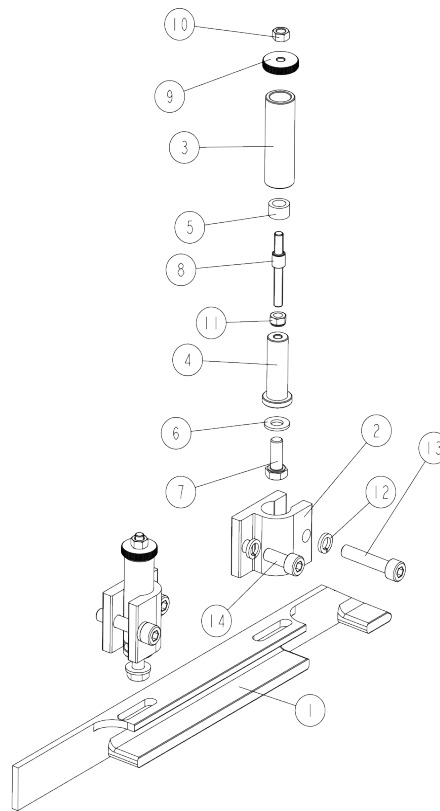
### 3.4 Bottom Cutterhead



TDL-MP260-21

REF	PART #	DESCRIPTION	COMMENTS	QTY.
-	537568	<b>BOTTOM CUTTER - ASSEMBLY</b>		1
1	F81031-2	Nut M6 Zc 8 Nylock Din 982 Iso 7040		2
2	F81053-1	Washer 6,4 Zc Din 126 Iso 7091		2
3	536958-1	Bearing Housing 1		2
4	F81053-11	Washer 6,5 Zc Fender Din 9021 Iso 7093		2
5	F81001-3	Bolt M6x25 Hh Zc Ft 8.8 Din 933		2
6	536959	O-ring		2
7	096191	Bearing, 6006 2rsr		2
8	260-140-5	Lower Cutting Head MP260		1
9	F81001-80	Screw M6x12 Lshcs 10.9 Din 7984		4
10	F81054-4	Washer 8,2 Zc Spring Lock Din 127		4
11	F81002-41	Screw M8x60 Lhscs 8.8 Din 7984		4
12	241-061	Wedges, 11.8" (300mm) - 2 PCS		1
13	083595	Bolt M6x12 10.9 Din 933 Iso 4017		10
14	TPK300.20MP	Knife, Planer; HSS; 300mm (11.8") L w/ Notch (Bottom cutter, individual knife)		2

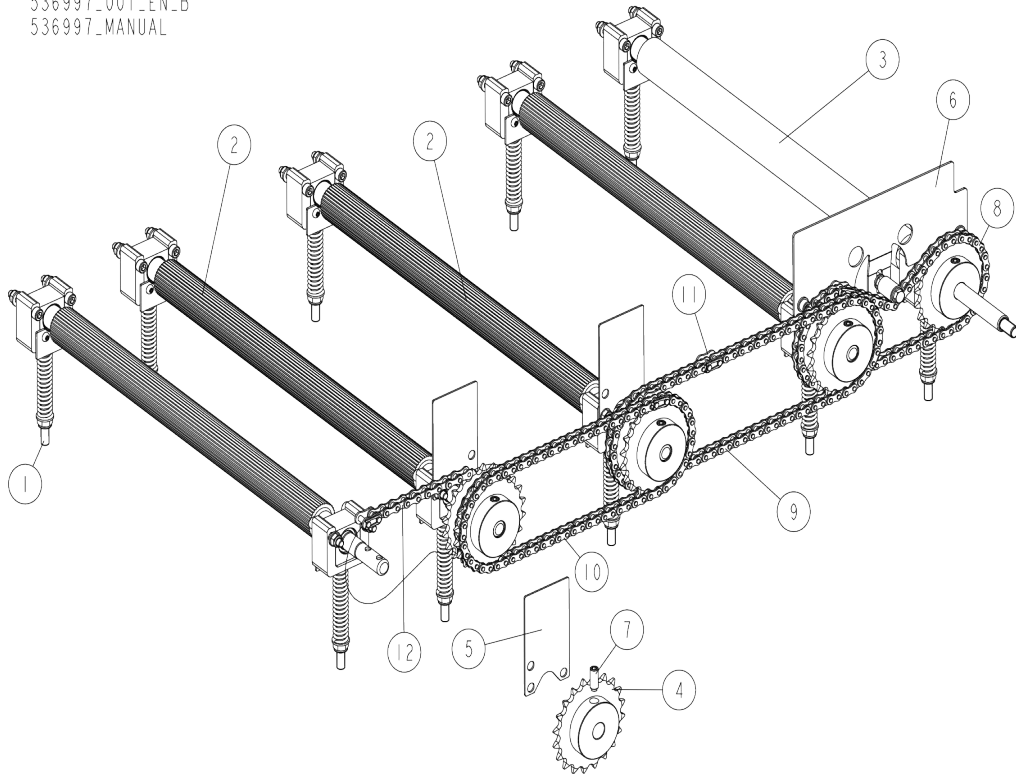
## 3.5 Infeed and Outfeed Fences

537570\_001\_B  
537570\_MANUAL

REF	PART #	DESCRIPTION	COMMENTS	QTY.
	537570	<b>Assy, Infeed Fence</b>		1
	537572	<b>Assy, Outfeed Fence</b>		1
1	537569-1	Fence 1, Infeed		1
	537571-1	Fence 2, Outfeed		1
2	536966-1	Clamp		2
	536965	Adjustable Knob		2
3	537001-1	Pin Guide		1
4	536999-1	Knob Pin		1
5	537002	Insert		1
6	F81054-1	Washer 8,4 Zc Din 126 Iso 7091		1
7	F81002-4	Bolt M8x20 Hh Zc Ft 8.8 Din 933		1
8	541455	Thread Pin M6		1
9	541454	Knurled Nut		1
10	F81031-2	Nut M6 Zc 8 Nylock Din 982 Iso 7040		2
11	F81054-4	Washer 8,2 Zc Spring Lock Din 127		4
12	F81002-29	Screw M8x40 Shcs Zc 8.8 Din 912 Iso 4762		2
13	F81002-30	Screw M8x20 Shcs Zc 8.8 Din 912 Iso 4762		2

### 3.6 Feed Assembly

536997\_001\_EN\_B  
536997\_MANUAL

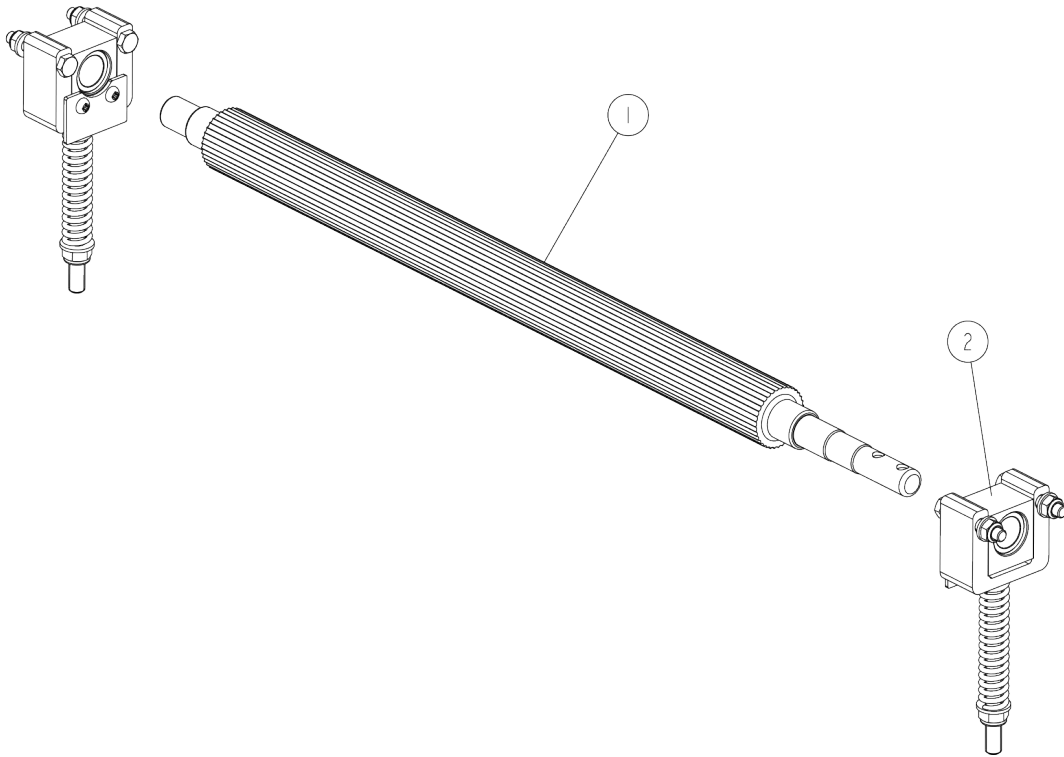


REF	PART #	DESCRIPTION	COMMENTS	QTY.
-	536997-US	<b>FEED ASSEMBLY</b>		1
1	533580	Drive Shaft Assembly <a href="#">See Section 3.7</a>		2
2	537585	Drive Shaft Assembly <a href="#">See Section 3.7</a>		2
3	533581	Shaft Assembly, W/protective Cover <a href="#">See Section 3.7</a>		1
4	533109-US	Assy, Sprocket, #35, 27T		7
5	536998-1-US	Plate, 2-1/8x3-5/8x1/16		3
6	537535-US	Tension Plate Complete <a href="#">See Section 3.9</a>		1
7	F81002-77	Screw, M8-1.25x20mm SHSS Dog Point		8
8	533109-US	Assy, Sprocket, #35, 27T		1
9	135069	Chain, #35x57 Pitches Incl/ML+Offset		1
	032170	Link, #35 Master		1
10	537053-US	Chain, #35x78 Pitches Incl/Master Link		1
	032170	Link, #35 Master		1
11	537054-US	Chain, #35x70 Pitches Incl/Master Link		1
	032170	Link, #35 Master		1
12	537051-US	Chain, #35x54 Pitches Incl/Master Link		1
	032170	Link, #35 Master		1

### 3 Mechanical Assembly

#### 3.7 Drive Shaft Assemblies

533580\_001\_A  
533580\_MANUAL

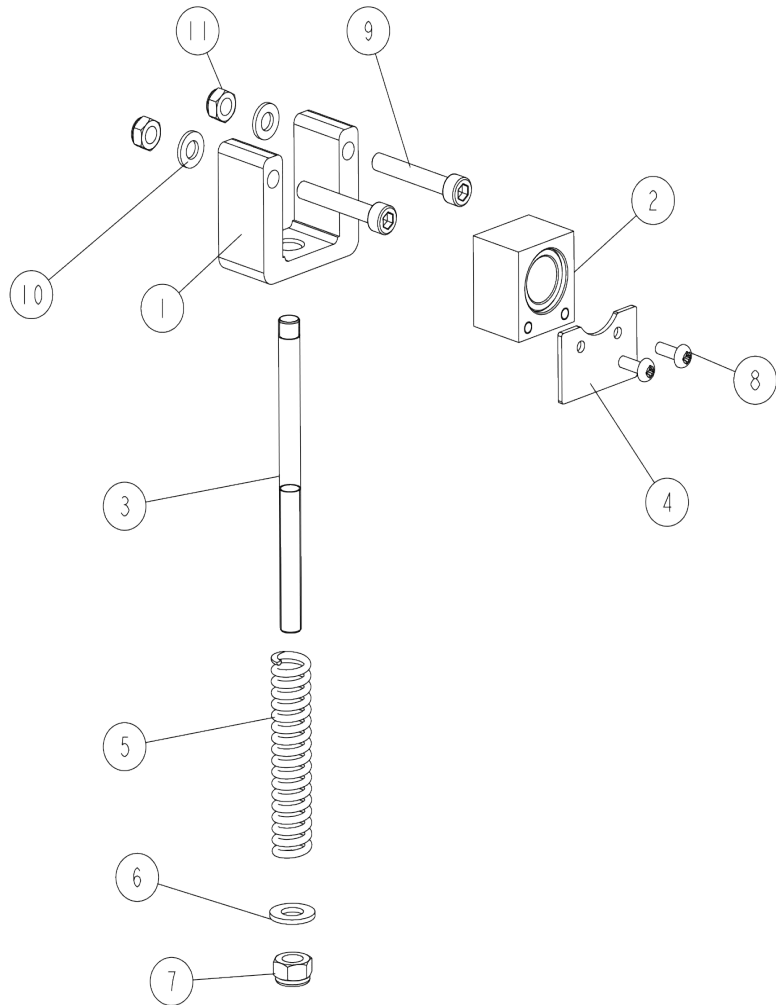


REF	PART #	DESCRIPTION	COMMENTS	QTY.
-	533580	<b>DRIVE SHAFT ASSEMBLY</b>		1
-	537585	<b>DRIVE SHAFT ASSEMBLY</b>		1
-	533581	<b>DRIVE SHAFT ASSEMBLY</b>		1
1	533513-1	Shaft, Steel Drive for 533580		1
	537586-1	Shaft, Steel Drive for 533585		1
	533512	Shaft W/protective Cover for 533581		1
2	533520	Bearing Assembly, Slide <a href="#">See Section 3.8</a>		2



### 3.8 Slide Bearing Assembly

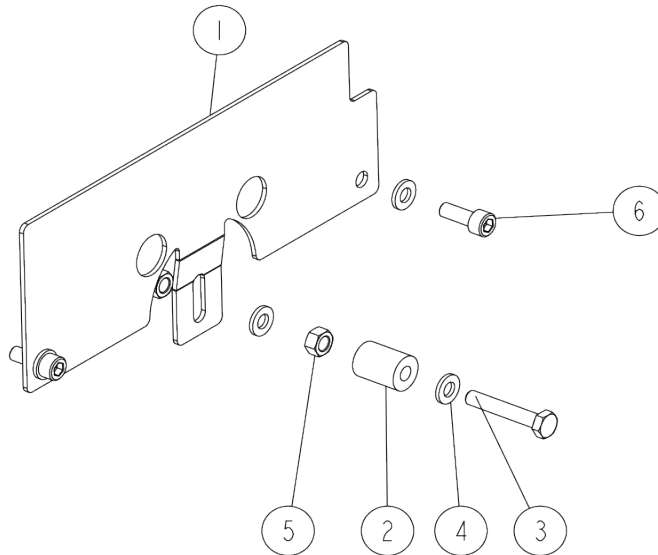
533520\_001\_B  
533520\_MANUAL



REF	PART #	DESCRIPTION	COMMENTS	QTY.
-	533520	<b>BEARING ASSEMBLY, SLIDE</b>		1
1	533514	Housing, Slide Bearing		1
2	537575	Slide Block Assembly		1
3	533518	Rod, M8 Threaded		1
4	533516	Cover, Rubber		1
5	533519	Spring		1
6	F81054-1	Washer 8,4 Zc Din 126 Iso 7091		1
7	F81032-2	Nut M8 Zc 8 Nylock Din 982 Iso 7040		1
8	F81011-43	Screw M4x12 Phillips Zc 5.8 Din 7985		2
9	F81001-5	Bolt M6x40 HH Zc Ft 8.8 Din 933		2
10	F81053-1	Washer 6,4 Zc Din 126 Iso 7091		2
11	F81031-2	Nut M6 Zc 8 Nylock Din 982 Iso 7040		2

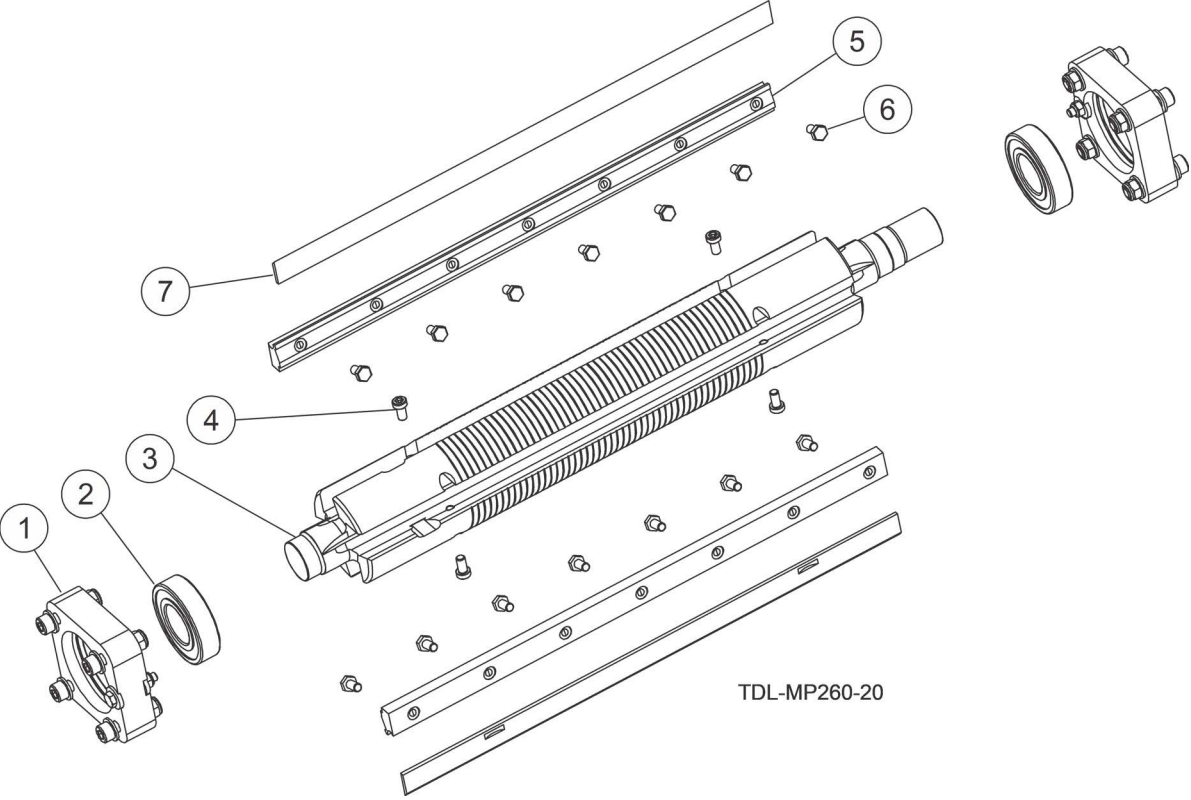
### 3.9 Tension Plate

537535\_001\_EN  
537535\_MANUAL



REF	PART #	DESCRIPTION	COMMENTS	QTY.
-	537535-US	<b>TENSION PLATE COMPLETE</b>		1
1	537534-1-US	Bracket, Tension Plate		1
2	R80671-6-US	Bushing, Spacer		1
3	F05020-9	Bolt, M6-1.0x35mm Class8 HH		1
4	F05026-1	Washer, M6 Flat Class 4		4
5	F05027-16	Nut, M6-1 Swaged		2
6	F05004-206	Screw, M6-1.0 x 16mm SHCS		2

3.10 Cutterhead Assembly (Upper)

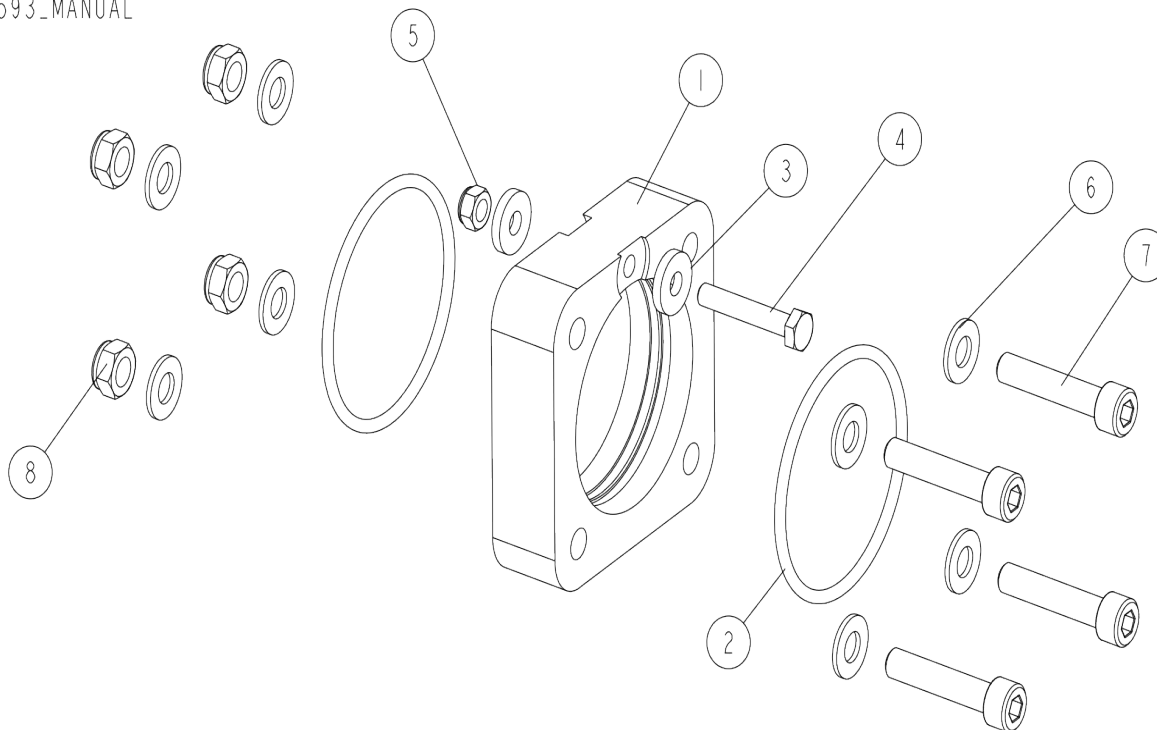


TDL-MP260-20

REF	PART #	DESCRIPTION	COMMENTS	QTY.
-	533682	<b>SHAFT ASSEMBLY, DRIVE</b>		1
1	533593	Housing Assembly, Bearing <a href="#">See Section 3.11</a>		2
2	100787	Bearing, 6206 2rsr P6 Rolling (Fag, Nsk, Skf)		2
3	260-138	Shaft, Main		1
4	F81001-80	Screw M6x12 Lshcs 10.9 Din 7984		4
5	241-060	Wedges, 410mm 16" - 2 PCS		1
6	083595	Bolt M6x12 10.9 Din 933 Iso 4017		14
7	TPK410.20MP	Knife, Planer; HSS; 410mm (16") L w/ Notch		2

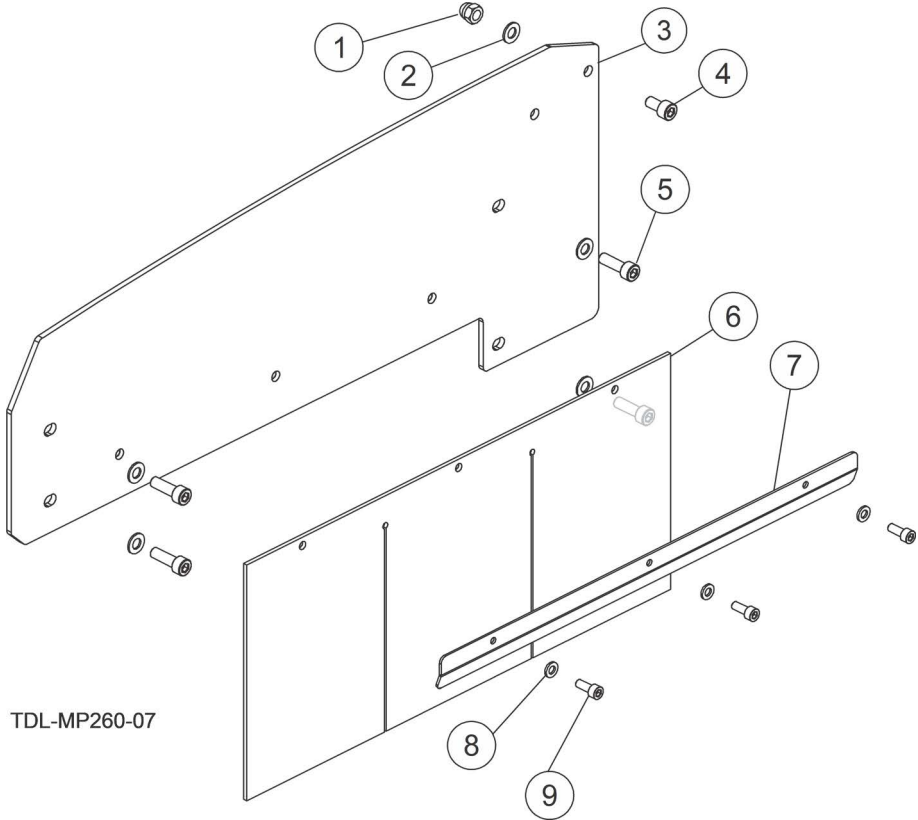
### 3.11 Bearing Housing

533593\_001  
533593\_MANUAL



REF	PART #	DESCRIPTION	COMMENTS	QTY.
-	533593	<b>HOUSING ASSEMBLY, BEARING</b>		1
1	533590-1	Housing, Bearing		1
2	533592	O-ring, Bearing Housing		2
3	F81053-13	Washer 6,4 Zc Din 7349		2
4	F81001-71	Bolt M6x35 Hh Zc 8.8 Pt Din 931		1
5	F81031-2	Nut M6 Zc 8 Nylock Din 982 Iso 7040		1
6	F81054-1	Washer 8,4 Zc Din 126 Iso 7091		8
7	F81002-29	Screw M8x40 Shcs Zc 8.8 Din 912 Iso 4762		4
8	F81032-2	Nut M8 Zc 8 Nylock Din 982 Iso 7040		4

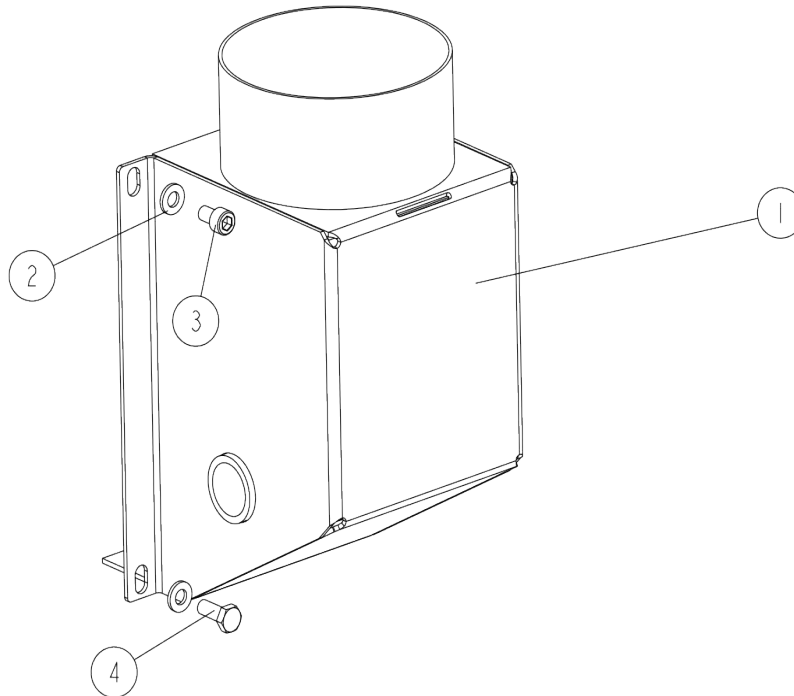
3.12 Right Guard



REF	PART #	DESCRIPTION	COMMENTS	QTY.
	537550-US	<b>ASSY, RIGHT COVER</b>		1
1	F81033-25	Nut, M8-1.25 Cap		1
2	F05026-4	Washer, M8 Flat		5
3	537548-1-US	Weldment, Right Cover		1
4	F05021-10	Screw, M8-1.25x16 SHC		1
5	F05021-33	Screw, M8-1.25x25 SHC BO		4
6	533083-US	Plate, Flexible Cover		1
7	537551-1-US	Bracket, Cover Support		1
8	F05026-1	Washer, M6 Flat Class 4		3
9	F05004-206	Screw, M6-1.0 x 16mm SHCS		3

### 3.13 Sawdust Outlet Guard

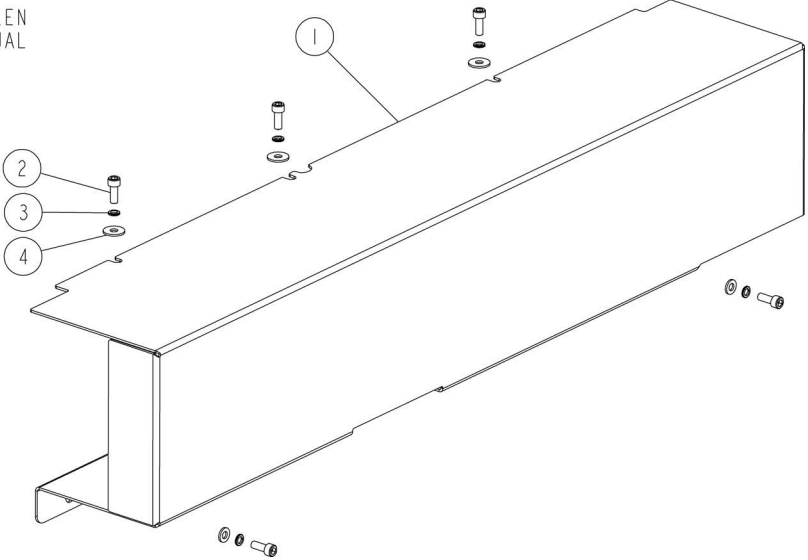
537533\_001\_EN\_A  
 537533\_MANUAL



REF	PART #	DESCRIPTION	COMMENTS	QTY.
	537533-US	<b>ASSY, SAWDUST OUTLET GUARD</b>		1
1	537530-1-US	Weldment, Sawdust Outlet Guard		1
2	f05020-7	Bolt, M6-1 x 14 Class 8 HH		2
3	F05026-1	Washer, M6 Flat Class 4		4
4	F05020-59	Bolt, M6-1x10mm HH FT 8.8 Zinc		2

**3.14 Side Guard**

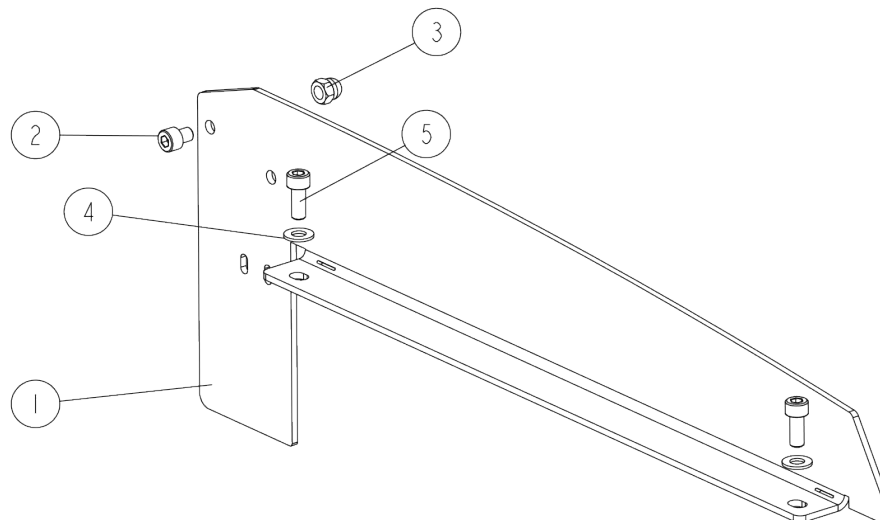
537525\_001\_EN  
 537525\_MANUAL



REF	PART #	DESCRIPTION	COMMENTS	QTY.
-	537525-US	<b>SIDE GUARD COMPLETE</b>		1
1	537524-1-US	Bracket, Side Guard		3
2	F05020-15	Screw, M6-1 x 20 SHC		2
3	F05026-2	Washer, M6 Split Lock		5
4	F05026-1	Washer, M6 Flat Class 4		5

### 3.15 Left Guard

37553\_V01\_EN  
37553\_MANUAL

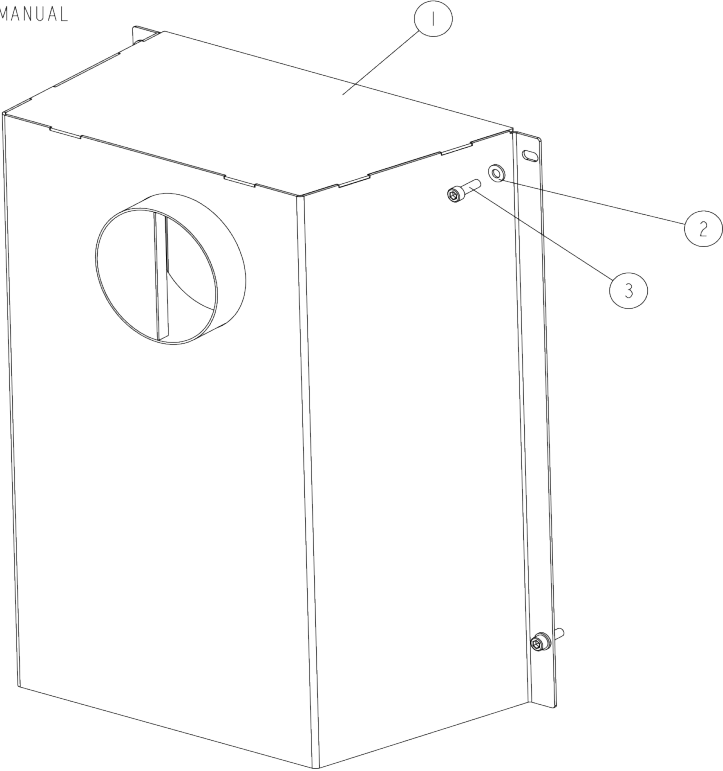


REF	PART #	DESCRIPTION	COMMENTS	QTY.
-	537553-US	<b>LEFT GUARD COMPLETE</b>		1
1	537552-1-US	Bracket, Left Guard Plate		1
2	F05021-33	Screw, M8-1.25x16 SHC		1
3	F81033-25	Nut, M8-1.25 Cap		1
4	F05026-4	Washer, M8 Flat		3
5	F81002-30	Screw, M8-1.25x25 SHC BO		2



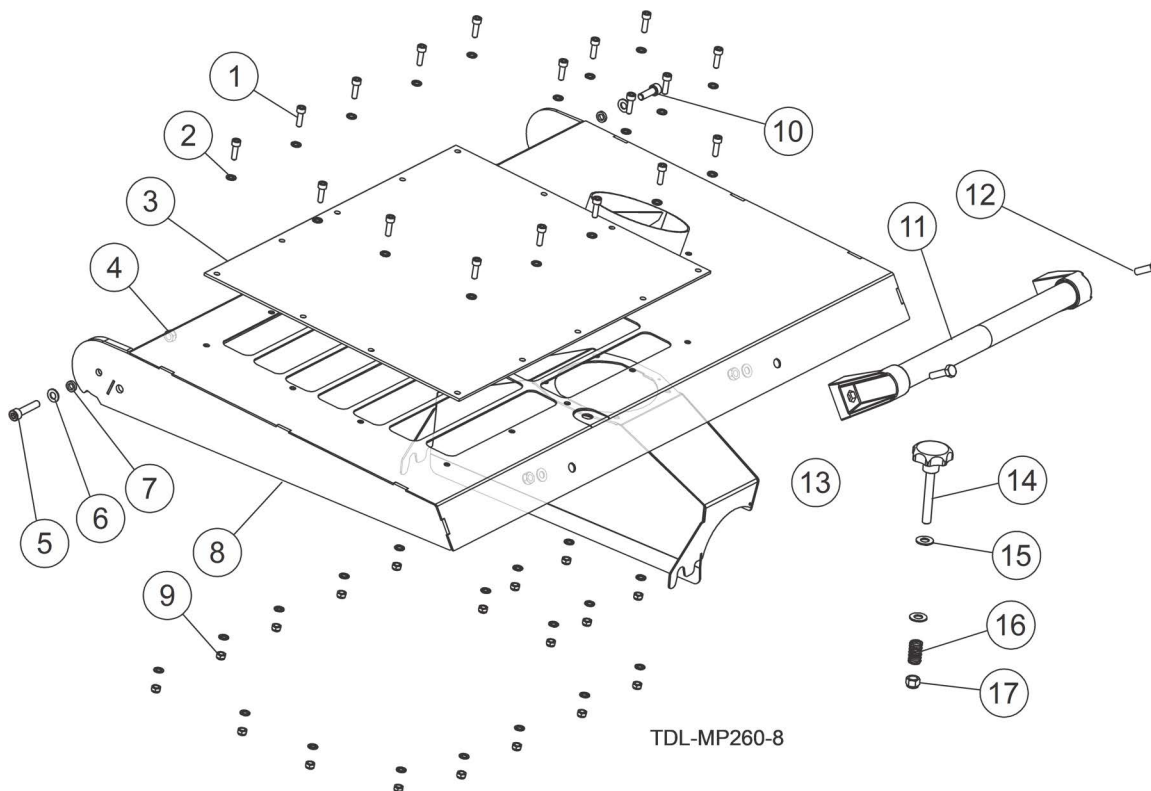
**3.16 Sawdust Outlet Guard**

537523\_001\_EN  
 537523\_MANUAL



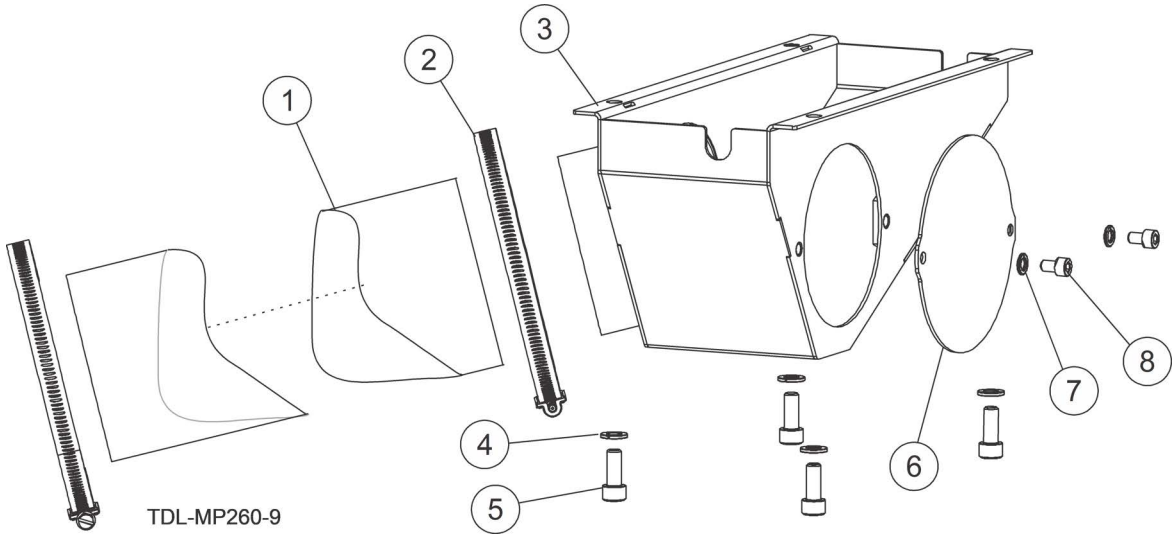
REF	PART #	DESCRIPTION	COMMENTS	QTY.
-	537523-US	<b>SAWDUST OUTLET GUARD COMPLETE</b>		1
1	537520-1-US	Weldment, Sawdust Outlet Guard		1
2	F05026-1	Washer, M6 Flat Class 4		4
3	F05020-15	Screw, M6-1 x 20 SHC		4

### 3.17 Top Cover



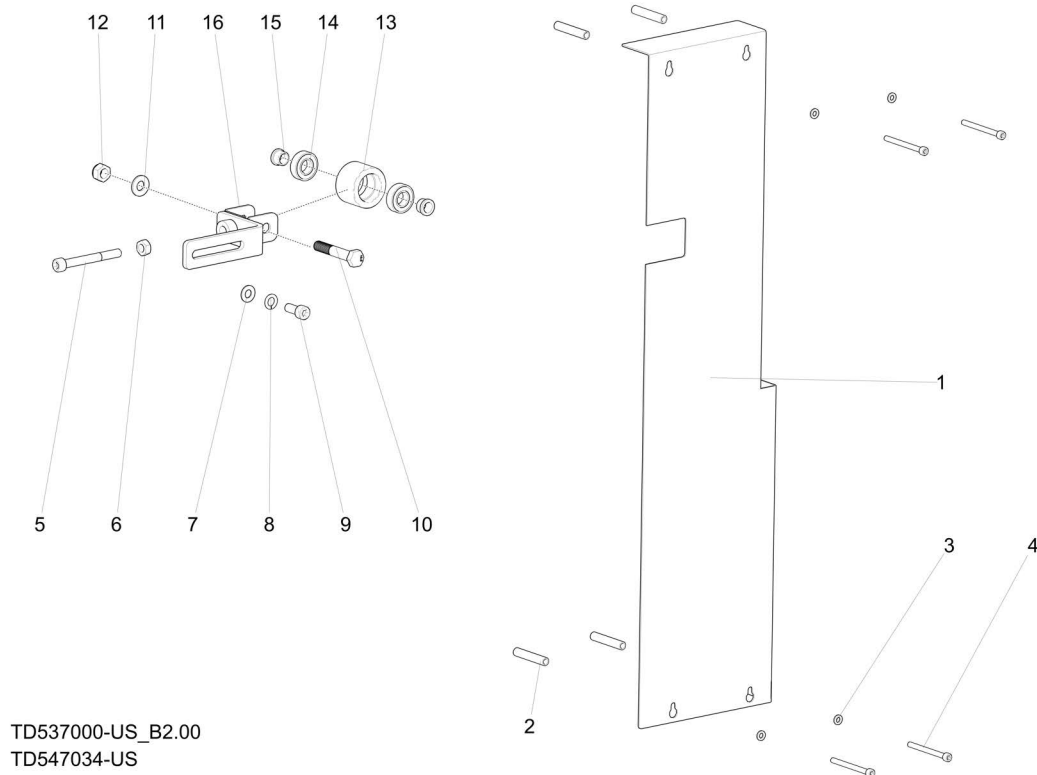
REF	PART #	DESCRIPTION	COMMENTS	QTY.
	536986-US	<b>ASSY, TOP COVER</b>		1
1	F05020-15	Screw, M6-1 x 20 SHC		18
2	F05026-2	Washer, M6 Split Lock		36
3	536987-US	Plate, Inspection Window		1
4	F05010-132	Nut, M8-1.25 Hex Nylock		4
5	F05021-6	Screw, M8-1.25 x 40 SHC		1
6	F05026-4	Washer, M8 Flat		4
7	533674-US	Spacer, .315x.500x.125 Nylon		2
8	536985-1-US	Weldment, Top Cover		1
9	F05010-200	Nut, M6-1.0 Nylon Lock		18
10	F05021-33	Screw, M8-1.25x25 SHC BO		1
11	535614-US	Assy, Cover Pull Handle		1
12	F05021-5	Bolt, M8-1.25x30 Class 8 HHC		2
13	537555-1-US	Weldment, Sawdust Extractor		1
	533685-US	Assy, Star Knob		1
14	533683	Knob, Star Grip; M10-1.5 x 70mm L Stud		1
15	F05011-134	Washer, M10 Flat SAE		2
16	533677-US	Spring, .60 0Dx1 Long x.072 Wire Comp		1
17	F05004-276	Nut, M10-1.25Hex Nyl Lock		1

**3.18 Sawdust Outlet**



REF	PART #	DESCRIPTION	COMMENTS	QTY.
	537547-US	<b>ASSY, SAWDUST OUTLET COMPLETE</b>		1
1	537389-US	Hose, 4" Clear Abrasion-Resistant Duct		1
2	123356	Clamp, Worm, 3 1/8 - 6 Dia		2
3	537546-1-US	Weldment, Sawdust Outlet		1
4	F05011-45	Washer, M8 Split Lock		4
5	F81002-30	Screw, M8x20mm SHC		4
6	537543-1-US	Plate, Cover		1
7	F05026-2	Washer, M6 Split Lock		2
8	F05020-19	Screw, M6-1x10 SHC		2

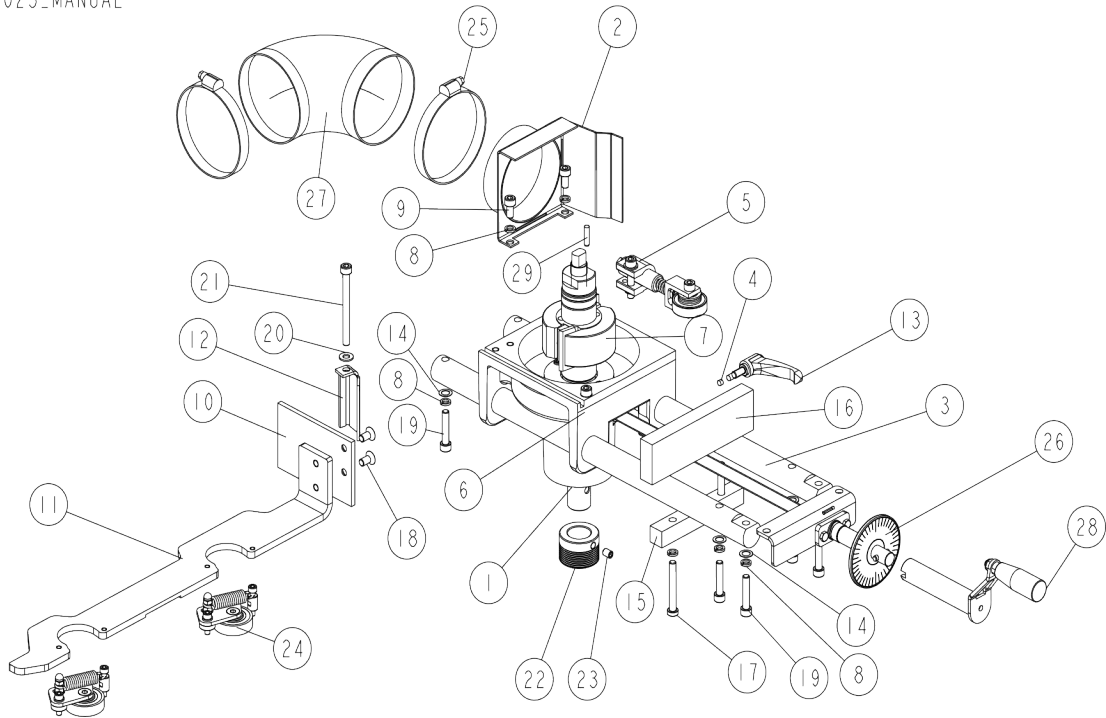
### 3.19 V-belt Cover



REF	PART #	DESCRIPTION	COMMENTS	QTY.
	537566-US	<b>ASSY, V-BELT COVER</b>		1
1	537540-1-US	Bracket, Side Cover		1
2	534209-1-US	Bushing, Spacer		4
3	F05026-1	Washer, M6 Flat Class 4		4
4	F05020-94	Screw, M6-1x70 SHC		4
	F05020-94	Bolt, M6-1x70 SHC CL 12.9 Blk Ox		4
	F05020-23	Bolt, M6-1x70 HHB		4
5	F05022-35	Screw, M10-1.5 x 90 SHC FT Zinc		1
6	F05010-85	Nut, M10-1.5 Hex		1
7	F05011-134	Washer, M10 Flat		1
8	F05011-88	Washer, 10MM Split Lock		1
9	F05022-12	Bolt, M10-1.5 x 25 SHC		1
	547034-US	<b>ASSY, TENSIONER</b>		1
10	F05023-14	Bolt, M12-1.75x70 HH CL10.9 Zinc		1
11	F05011-124	WASHER, M12 FLAT Zinc		1
12	F05010-209	Nut, M12x1.75 Hex Nylock		1
13	547075-1-US	Roller, Tensioner		1
14	086116	Bearing, 6003 DDUCM NSK		2
15	547035-US	Spacer, Tensioner		2
16	547033-1-US	Wldmnt, Tensioner		1

### 3.20 Spindle Moving Assembly

537025\_MANUAL



REF	PART #	DESCRIPTION	COMMENTS	QTY.
-	537025-US	<b>SPINDLE MOVING ASSEMBLY</b>		1
1	546837-1	Spindle Mount Base		1
2	537028-1-US	Weldment, Sawdust Outlet		1
3	537041-US	Drawn Rod 1.181 inch		2
4	535987-US	Round, Slide .236Dia x.157		2
5	533550	Assy, Pressure Roller <a href="#">See Section 3.21</a>		1
6	F81002-58	Screw, M8-1.25x35mm SHC		1
7	537005-US	Left Spindle Assembly <a href="#">See Section 3.22</a>		1
8	F05011-45	Washer, M8 Split Lock		10
9	F05021-10	Screw, M8-1.25x16 SHC		2
10	537027-1-US	Mount Plate		1
11	537026-1-US	Bracket, Board Guard Fence		1
12	133124	Bracket Wdmt, Guide Mount		1
13	535988-US	Adjustable Handle ERZ.63 p-M8x-16		1
14	535990-US	Washer, Shim 0.39IDx0.625Dx0.031		8
15	536956-1-US	Bar, 3/4x1x5 1/2		1
16	536957-1-US	Bar, 3/4x1.969x6 25/32		1
17	F05021-41	Screw, M8-1.25x70mm SHCS BO		2
18	F05021-42	Bolt, M8-1.25x16 Flat SHC Zinc		2

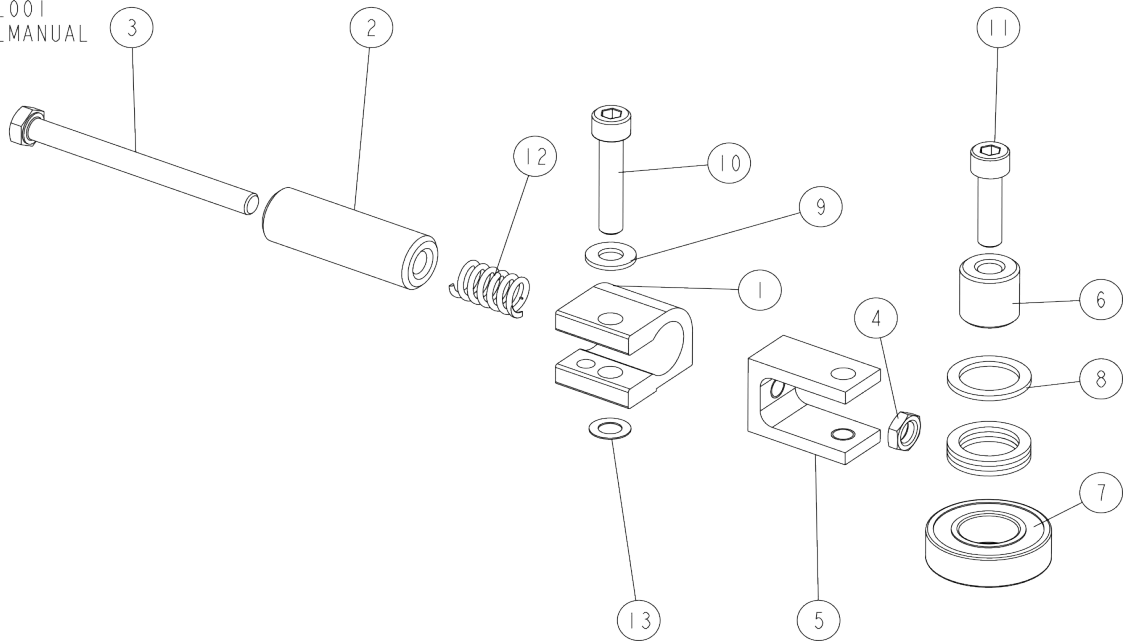
## 3

**Mechanical Assembly**  
*Spindle Moving Assembly*

REF	PART #	DESCRIPTION	COMMENTS	QTY.
19	F05021-6	Screw, M8-1.25 x 40 SHC		6
20	F05026-4	Washer, M8 Flat		1
21	F81002-44	Screw, M8-1.25x90mm SHC, Zinc		1
22	533586	Pulley, 8Pjx48mmx28mm		1
23	F05021-53	Screw, M8-1.25x12mm, Cup-Point Set		1
24	536980-US	Assy, Clamp Roller Complete <a href="#">See Section 3.23</a>		2
25	123356	Clamp, Worm, 3 1/8 - 6 Dia		2
26	537042-US	Assy, Side Feed <a href="#">See Section 3.24</a>		1
27	537390-US	Hose, 4" Clear Abrasion-Resistant Duct		1
28	537810-US	Assy, Handle <a href="#">See Section 3.27</a>		1
29	F81045-5	Pin, M6x24mm Dowel		1

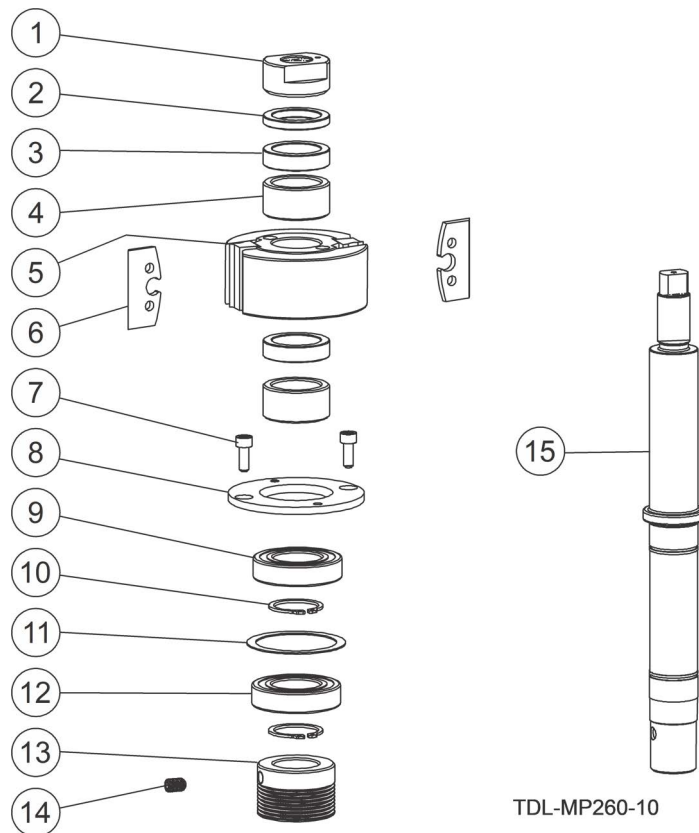
### 3.21 Pressure Roller Assembly II

533550\_001  
533550\_MANUAL



REF	PART #	DESCRIPTION	COMMENTS	QTY.
-	533550	<b>PRESSURE ROLLER ASSEMBLY</b>		1
1	533551-1	Connector, Aluminium		1
2	533553-1	Bushing, 8.5/20-60 Zinc-plated		1
3	F81002-16	Bolt M8x90 Hh Zc Ft 8.8 Din 933		1
4	F81032-8	Nut, M8-04-fe/zn Iso4035 Hex Thin		1
5	533552	Connector, Aluminium		1
6	533554-1	Bushing, 8.2/20-20		1
7	093868	Bearing, 6004 2rs Cx Rolling		1
8	533555	Washer, 28/20-2		4
9	F81054-1	Washer 8,4 Zc Din 126 Iso 7091		1
10	F81002-29	Screw M8x40 Shcs Zc 8.8 Din 912 Iso 4762		1
11	F81002-31	Screw M8x30 Shcs Zc 8.8 Din 912 Iso 4762		1
12	533556	Spring, 12x25xn2		1
13	F81055-16	Ring Shim 14/8-05 Din 988		1

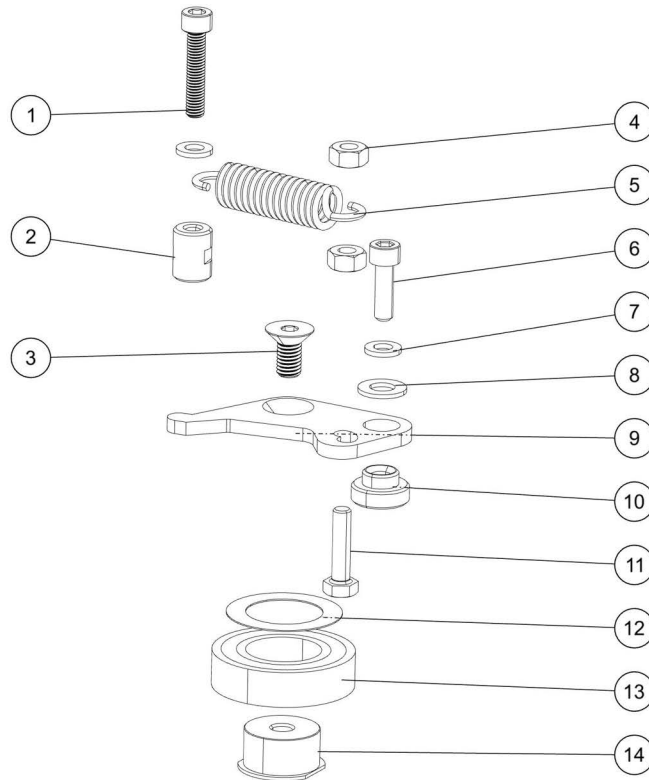
### 3.22 Left Spindle Assembly



REF	PART #	DESCRIPTION	COMMENTS	QTY.
	537005-US	<b>SPINDLE ASSY, LEFT</b>		1
1	533538-1-US	Bushing, M20x1.5IDx1 5/8ODx25/32		1
2	533540-1-US	Bushing, 1-5/8ODx1.183IDx0.205		1
3	533539-1-US	Bushing, 1-5/8ODx1.183IDx0.394		2
4	533541-1-US	Bushing, 1-5/8ODx1.183IDx0.795		2
5	TG56.2K	Cutterhead, 93D x 40L x 30B mm; Side 2kn		1
6	TPK50.024.4TB	Knives (set of 2)		1 set
7	F05004-206	Screw, M6-1.0 x 16mm SHCS		2
8	533542-1-US	Plate, Clamping		1
9	100787	Bearing, 6206 2RSR P6 Rolling		1
10	F81090-23	Ring, 30mm External Retaining		2
11	533543-US	Plate, Washer MP260		1
12	096191	Bearing, 6006 2RSR		1
13	533586	Pulley, 8Pjx48mmx28mm		1
14	F05021-53	Screw, M8-1.25x12mm SHSS Cup Point		1
15	533537-US	Shaft, MP260 Shaft Left		1



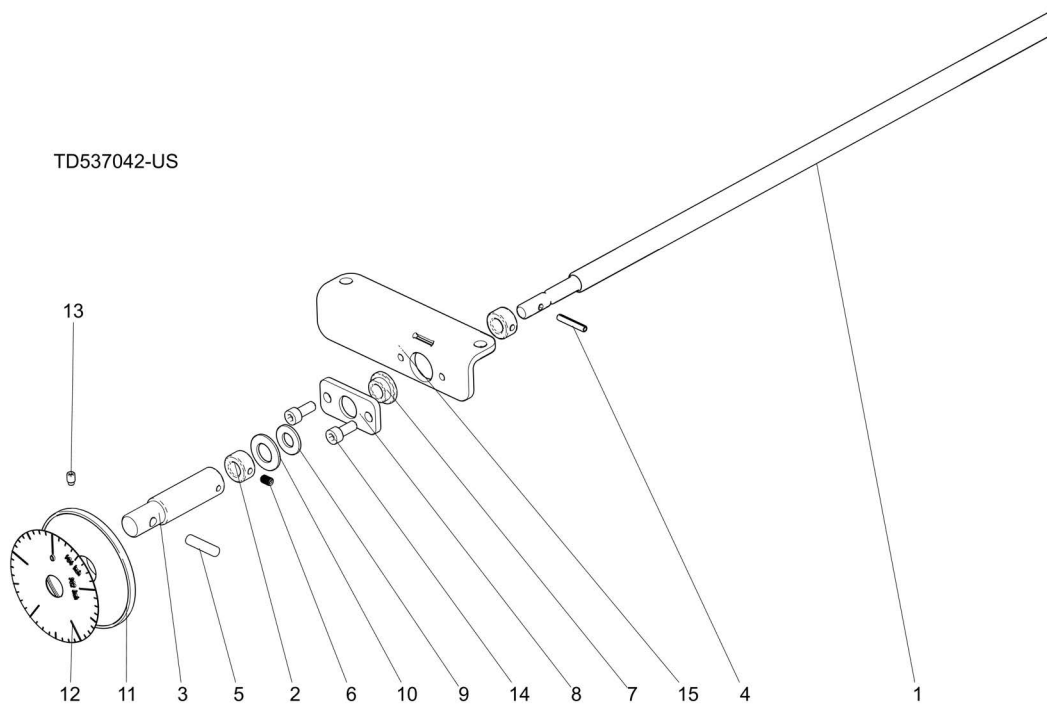
### 3.23 Clamp Roller Assembly



TD536980-US

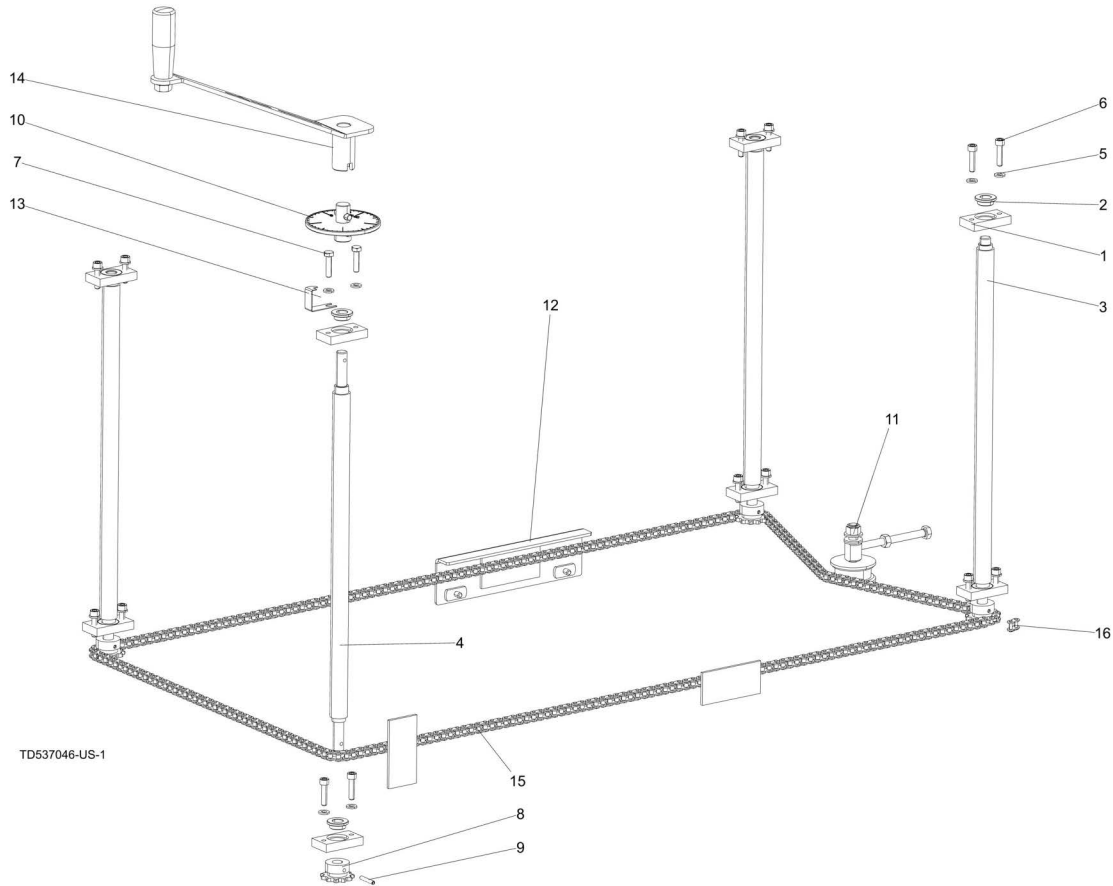
REF	PART #	DESCRIPTION	COMMENTS	QTY.
-	536980-US	<b>CLAMP ROLLER ASSEMBLY</b>		1
1	F05020-25	Screw, M6-1x30 SHC		1
2	533633-1-US	Bushing, M6x1IDx0.5ODx.669		1
3	F05021-42	Bolt, M8-1.25x16 Flat SHC		1
4	F05027-16	Nut, M6-1.0 Swaged		2
5	533571	Spring, 15mmx65mmx2.5mm Extension		1
6	F05020-15	Screw, M6-1 x 20 SHC		1
7	F05026-1	Washer, M6 Flat Class 4		2
8	F05026-4	Washer, M8 Flat		1
9	533525-1-US	Plate, Bearing Movable		1
10	533632-US	Bushing, Flanged		1
11	F05020-33	Bolt, M6-1 x 25 Class 8 HH		1
12	130466	Washer, 1IDx1.5ODx.016 SS		1
13	089652	Bearing, 25mmIDx47mmOD Radial Ball		1
14	130465	Bushing, 25mm Bearing Mount		1

### 3.24 Side Feed Assembly



REF	PART #	DESCRIPTION	COMMENTS	QTY.
	537042-US	<b>ASSY, SIDE FEED</b>		1
1	535996	Cutter, Trapezoidal Screw		1
2	535997-1-US	Bushing, .394IDx.75ODx.394		2
3	537044-1-US	Bushing, Connector		1
4	F81048-82	Pin, M4x24mm Roll		1
5	F05012-134	Pin, 1/4x1 Dowel		1
6	F05020-66	Screw, M5-0.8 x 8mm SHCP Set; 18-8SS		1
7	541372	Self Lubricating Bearing, AMES n10/n16/n22-8		1
8	535991-1-US	Plate, Slide Bushing Plate		1
9	F05011-134	Washer, M10 Flat		1
10	F05011-138	Washer, Belleville 1/2IDx1ODx.085H		1
11	533594-US	Bushing, Round scale		1
12	533577-US	Decal, MP260 Round Scale		1
13	F81014-15	Screw, M5-0.8x8mm SHSS Dog Point		1
14	F05004-206	Bolt, M6-1.0x16mm SHCS		2
15	537045-1-US	Bracket, Screw Mounting Plate		1

### 3.25 Up/Down Feed Assembly



TD537046-US-1

REF	PART #	DESCRIPTION	COMMENTS	QTY.
-	537046-US	<b>UP/DOWN FEED ASSEMBLY</b>		1
1	533113-1-US	Plate, Block		8
2	546901	Bushing, 12x18x8 Flanged 24-3 Bronze		8
3	533116-1	Screw, Tr20x4 x 444L mm		3
4	537047-1	Screw, Tr20x4 x 468L mm		1
5	F05026-1	Washer, M6 Flat Class 4		16
6	F05020-22	Screw, M6-1x25 SHC		14
7	F05020-33	Bolt, M6-1 x 25 Class 8 HHC		2
8	533111-US	Assy, Sprocket, #35, 11T		4
9	F81044-13_US	Pin, 5/32x1 Spring Roll		4
10	533676-US	Scale, Round Complete <a href="#">See Section 3.26</a>		1
11	534390-US	Chain Tension, Assembly <a href="#">See Section 3.29</a>		1
12	537560-US	Chain Slide Assembly <a href="#">See Section 3.30</a>		1
13	537558-US	Bracket, Scale Indicator		1

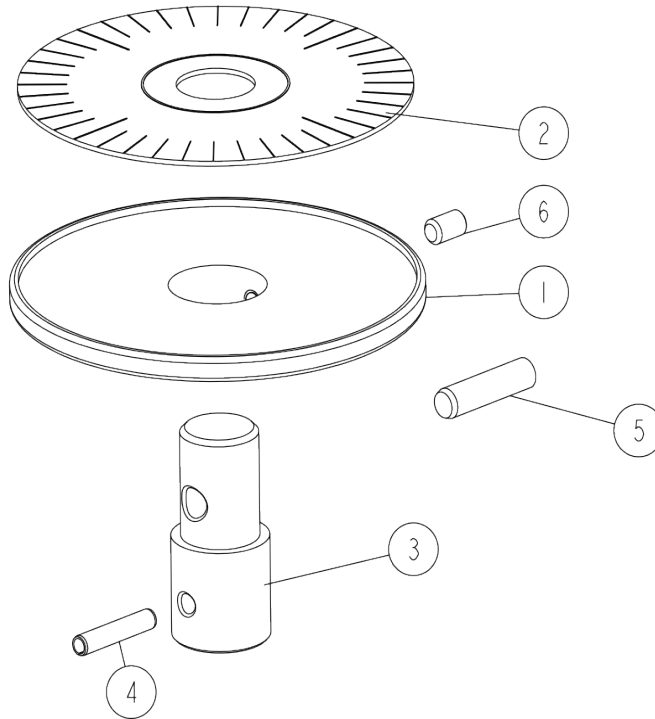
**3****Mechanical Assembly**  
*Pressure Roller Assembly II*

---

REF	PART #	DESCRIPTION	COMMENTS	QTY.
14	535975-US	Handle Assembly <a href="#">See Section 3.28</a>		1
15	537050-US	Chain, #35x292 Pitches Incl/Master Link		1
16	032170	Link, #35 Master		1

### 3.26 Up/Down Feed Scale

533676\_001\_A  
533676\_MANUAL

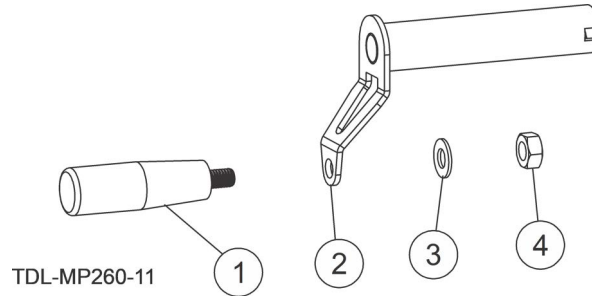


REF	PART #	DESCRIPTION	COMMENTS	QTY.
-	533676-US	<b>SCALE, ROUND COMPLETE</b>		1
1	533594-US	Bushing, Round Scale		1
2	533577-US	Decal, Round Scale		1
3	533595-1	Bushing, Connector		1
4	F05012-28	Pin, 5/32x1 Harden Dowel		1
5	F05012-134	Pin, 1/4x1 Dowel		1
6	F81014-15	Screw, M5-0.8x8mm SHSS Dog Point		1

### 3 Mechanical Assembly

#### Moveable Cutter Handle

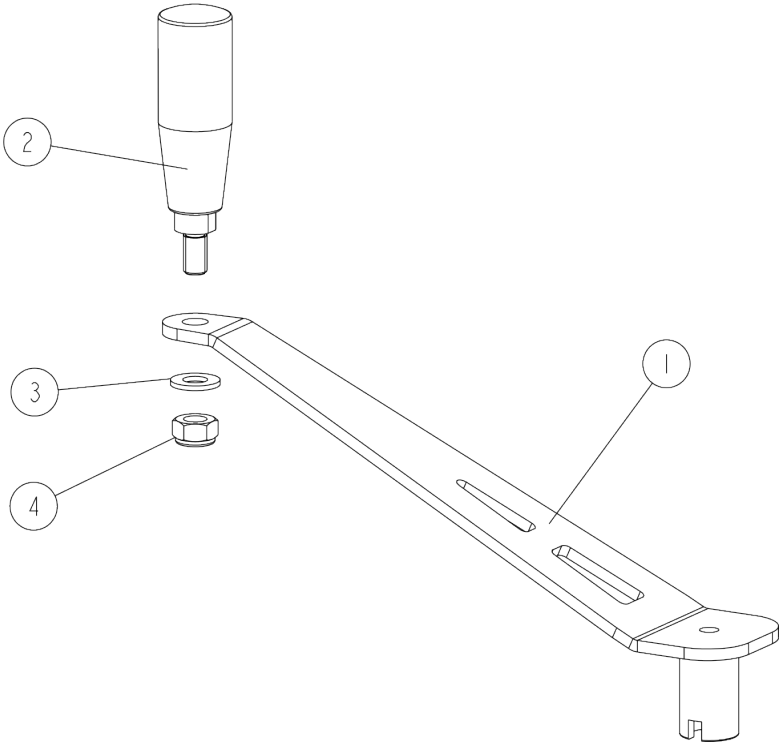
### 3.27 Moveable Cutter Handle



REF	PART #	DESCRIPTION	COMMENTS	QTY.
	537810-US	<b>ASSY, HANDLE</b>		1
1	533505-US	Plastic Tapered Handle w/ Revolving Grip		1
2	537811-1-US	Weldment, Handle		1
3	F05011-134	Washer, M10 Flat SAE		1
4	F05010-85	Nut, M10-1.5 Hex		1

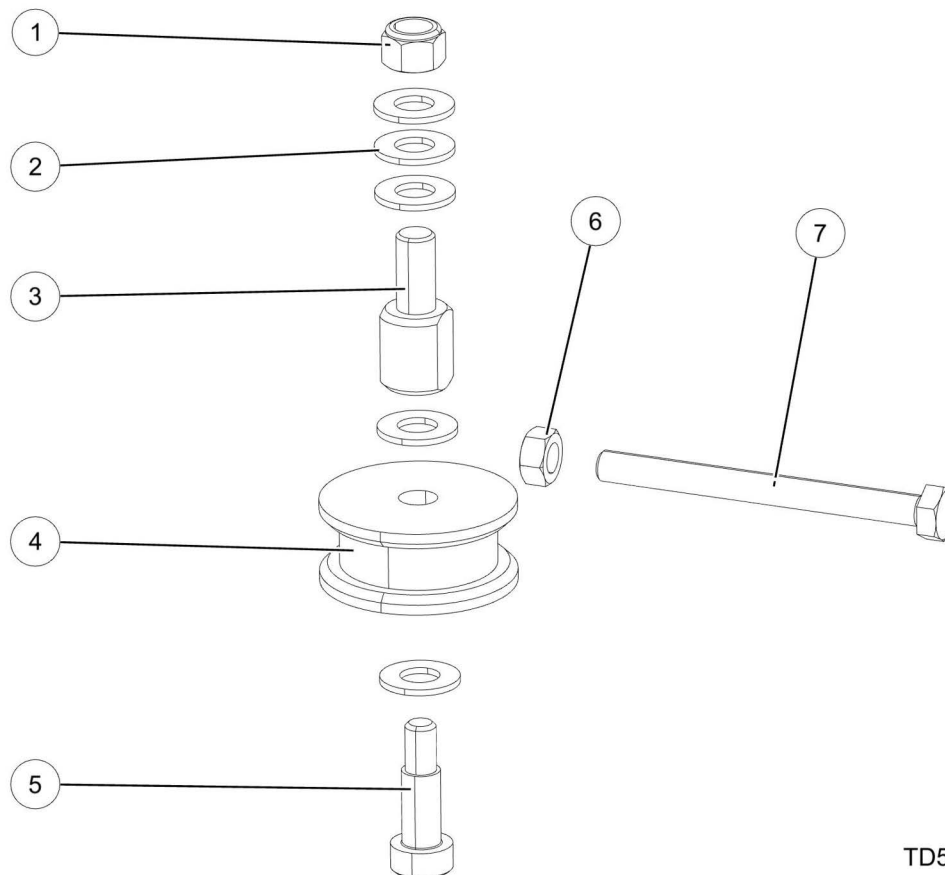
3.28 Up/Down Feed Handle

535975\_001\_EN  
535975\_MANUAL



REF	PART #	DESCRIPTION	COMMENTS	QTY.
	535975-US	<b>ASSY, HANDLE</b>		1
1	535973-1-US	Weldment, Handle		1
2	533505-US	Plastic Tapered Handle w/ Revolving Grip		1
3	F05011-134	Washer, M10 Flat SAE		1
4	F05010-85	Nut, M10-1.5 Hex		1

### 3.29 Feed Chain Tensioner

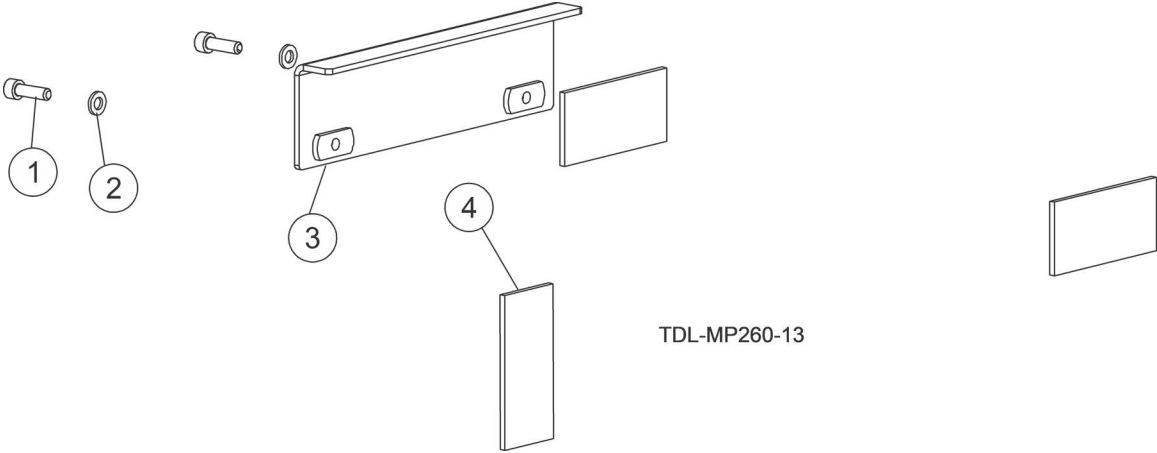


TD534390-US

REF	PART #	DESCRIPTION	COMMENTS	QTY.
	534390-US	<b>ASSY, CHAIN TENSION</b>		1
1	F05004-270	Nut, M10-1.50 Hex Nyl Lock		1
2	F05011-134	Washer, M10 Flat SAE		5
3	534388-1-US	Screw, Mount		1
4	533576-US	Roller, Tensioner		1
5	F05022-27	Bolt, Shoulder 10mmDia x 20mmL Plain		1
6	F05010-162	Nut, M8-1.25 Free Zinc Plate		1
7	F05004-247	Bolt, M8x1.25x90mm HH FT C18.8 Zinc		1



3.30 Feed Chain Slide



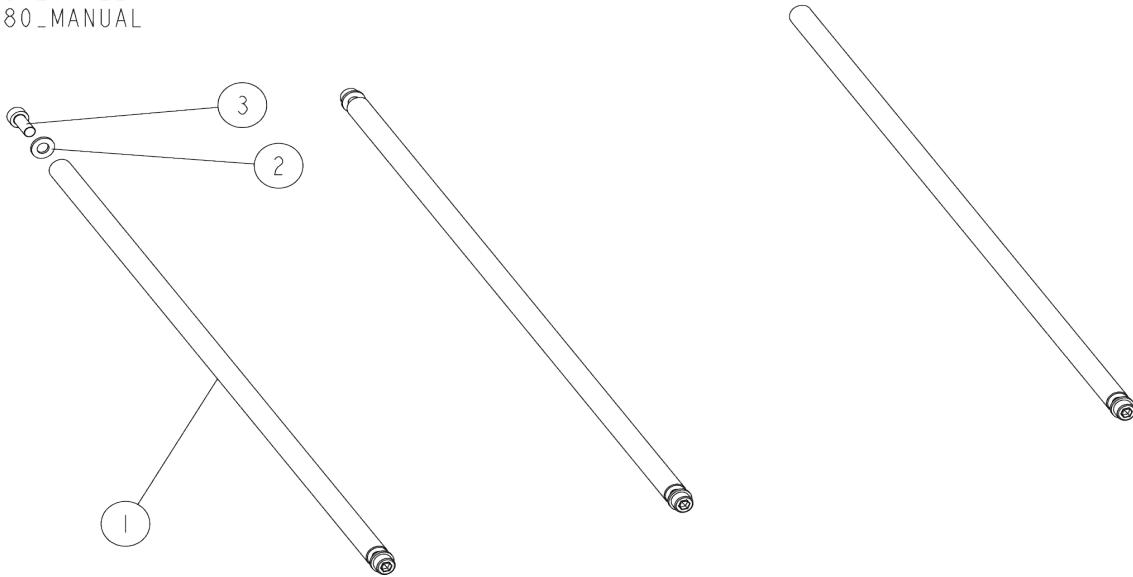
TDL-MP260-13

REF	PART #	DESCRIPTION	COMMENTS	QTY.
	537560-US	<b>ASSY, CHAIN SLIDE</b>		1
1	F05020-15	Screw, M6-1 x 20 SHC		2
2	F05026-1	Washer, M6 Flat Class 4		2
3	537560-1-US	Weldment, Angle Section Brkt		1
4	537562-US	Slider, HDPE		3

**3** Mechanical Assembly  
Up/Down Feed Handle

**3.31 Rod Set**

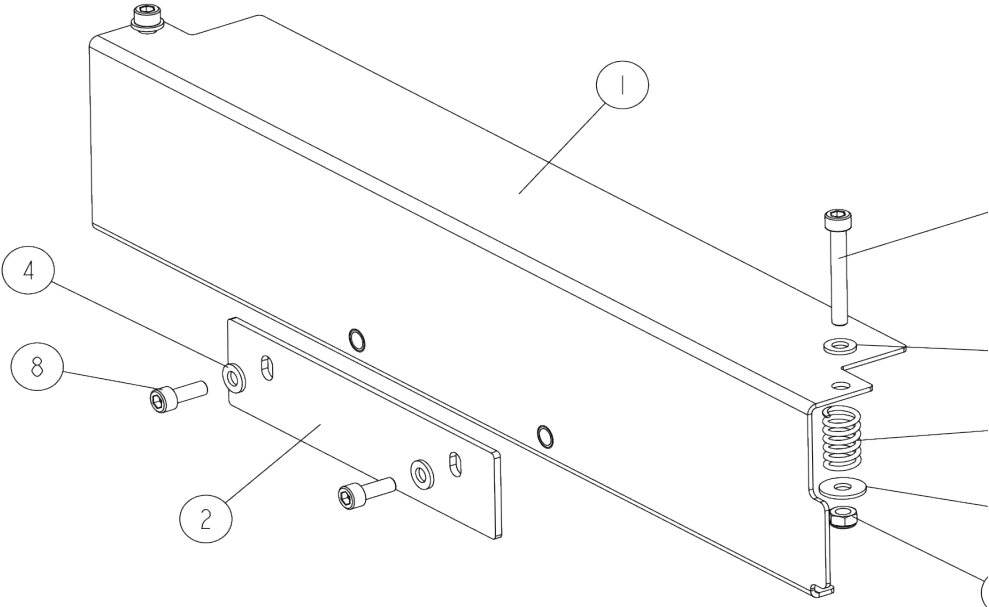
537580\_001\_EN  
537580\_MANUAL



REF	PART #	DESCRIPTION	COMMENTS	QTY.
-	537580-US	<b>ROD SET</b>		1
<b>1</b>	533092-1-US	SHAFT		3
<b>2</b>	F05026-1	Washer, M6 Flat Class 4		5
<b>3</b>	F05020-15	Screw, M6-1 x 20 SHC		5

3.32 Moving Plate

37584\_US1\_EN  
37584\_MANUAL



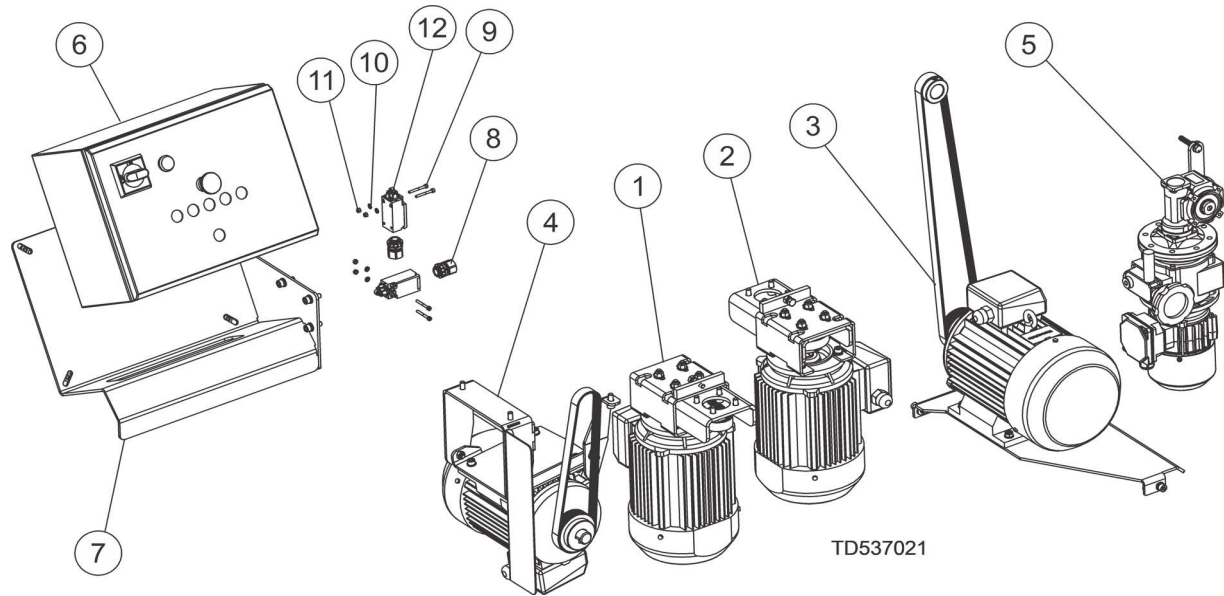
REF	PART #	DESCRIPTION	COMMENTS	QTY.
	537584-US	<b>ASSY, MOVING COVER</b>		1
1	537583-US	Weldment, Moving Cover		1
2	537582-1-US	Plate, 6-11/16x1-9/16x.120		1
3	533677-US	Spring, .58 ODx1 1/8		2
4	F05026-1	Washer, M6 Flat Class 4		4
5	F05020-86	Screw, M6-1.0x50mm SHC		2
6	F05026-4	Washer, M8 Flat		2
7	F05010-200	Nut, M6-1.0 Nylon Lock		2
8	F05004-206	Screw, M6-1.0 x 16mm SHCS		2

# 4 Motor Kits

## Motor Kit

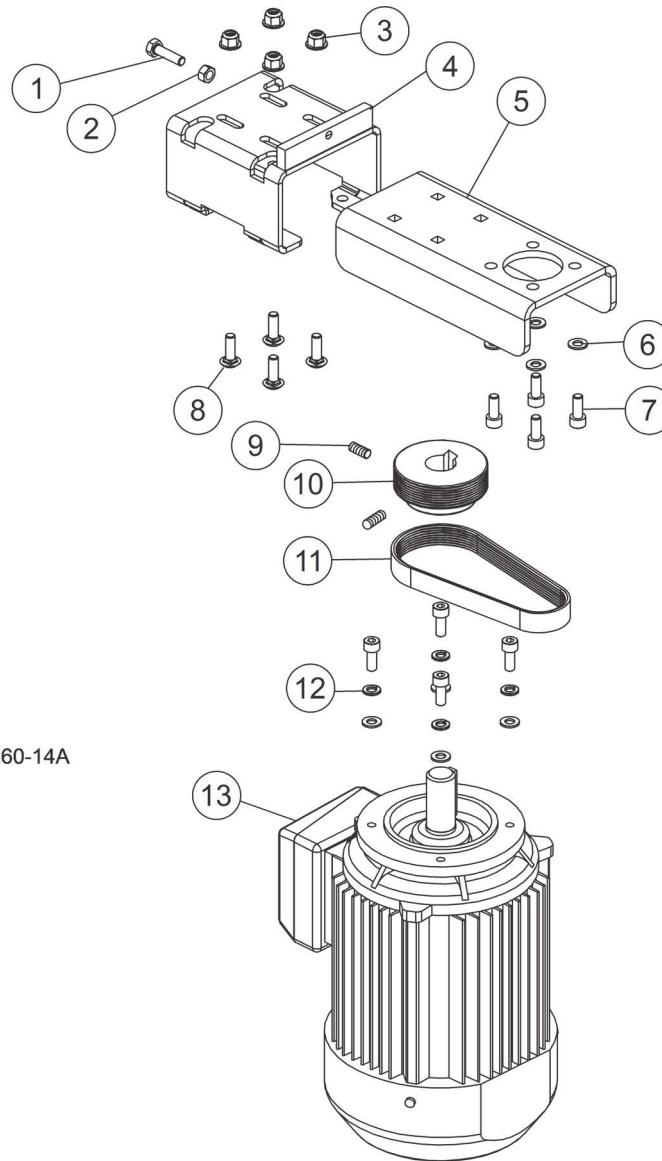
### SECTION 4 MOTOR KITS

#### 4.1 Motor Kit



REF	PART #	DESCRIPTION	COMMENTS	QTY.
	537021-6U-US	<b>ASSY, MOTOR KIT FOR MP260EA</b>		1
	537021-2U-US	<b>ASSY, MOTOR KIT FOR MP260EB</b>		1
1	533647-6U-US-1	Assy, Fixed Side Cutter Drive (MP260EA)		1
	533647-U-US	Assy, Fixed Side Cutter Drive (MP260EB)		1
2	533647-6U-US	Assy, Moveable Side Cutter Drive (MP260EA)		1
	541459-US	Assy, Moveable Side Cutter Drive (MP260EB)		1
3	537035-6U-US	Assy, Horizontal Upper Cutter Pro Drive	(MP260EA)	1
	537035-U-US	Assy, Horizontal Upper Cutter Pro Drive	(MP260EB)	1
4	537031-6U-US	Assy, Horizontal Bottom Cutter Drive	(MP260EA)	1
	537031-U-US	Assy, Horizontal Bottom Cutter Drive	(MP260EB)	1
5	537036-6U-US	Assy, MP260 Pro Feed Drive	(MP260EA)	1
	537036-U-US	Assy, MP260 Pro Feed Drive	(MP260EB)	1
6	121144	Control Assy, MP260, 4-sided, 240V, 1Ph	(MP260EA)	1
	532791-2U	Control Assy, MP260, 4-sided, 240V, 3Ph	(MP260EB)	1
7	537032-US	Assy, Electric Box Bracket Complete		1
8	069753	Connector, M20 0.17-0.45 Cord Grip		2
9	F05020-81	Screw, M4-0.7x35mm SHCS PK/50		.08
10	F05011-132	Washer, M4 Flat SS PK/100		.04
11	F05027-8	Nut, M4-.7 Class 8 Nylock		4
12	537641	Switch, Safety D4N-4132		2

## 4.2 Side Cutter Motor Assemblies



TDL-MP260-14A

REF	PART #	DESCRIPTION	COMMENTS	QTY.
	533647-6U-US-1	ASSY, FIXED SIDE CUTTER DRIVE	(MP260EA)533647-6U-US-1 and 533647-6U-US differ only in orientation.	1
	533647-6U-US	ASSY, MOVEABLE SIDE CUTTER DRIVE (MP260EA)		1
	533647-U-US	ASSY, FIXED SIDE CUTTER DRIVE	(MP260EB) 533647-U-US and 541459-US differ only in orientation.	1
	541459-US	ASSY, MOVEABLE SIDE CUTTER DRIVE	(MP260EB)	1
1	F05021-18	Bolt, M8-1.25 x 30 HH FT Class 8.8		1

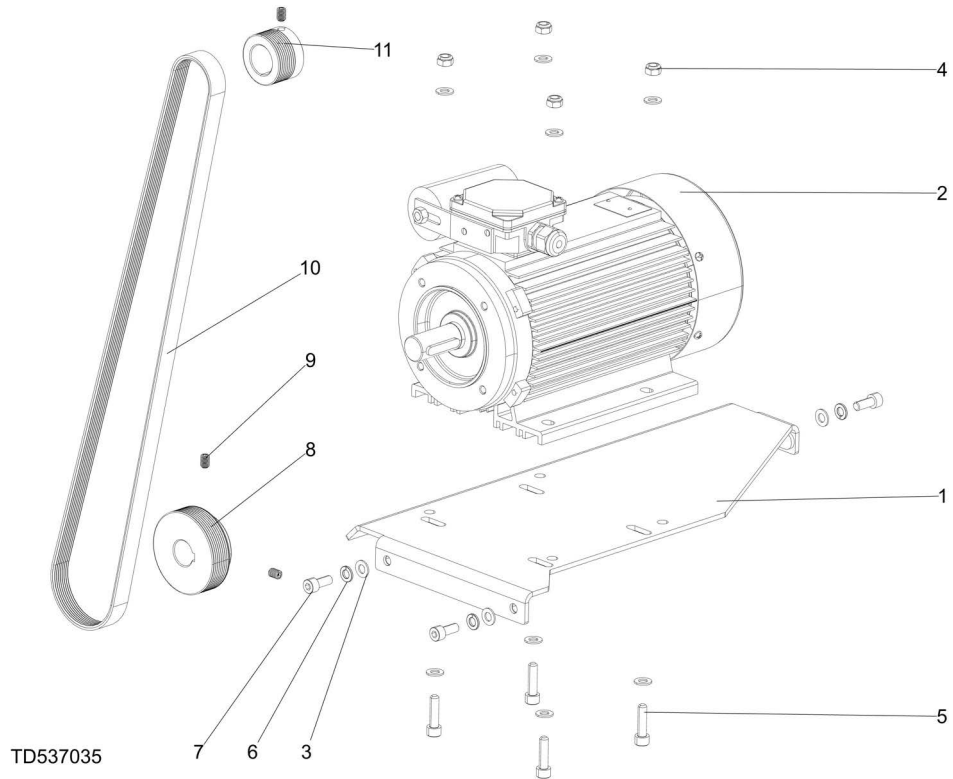
# 4

## Motor Kits

### Side Cutter Motor Assemblies

REF	PART #	DESCRIPTION	COMMENTS	QTY.
2	F05010-162	Nut, M8-1.25 Free Zinc Plate		1
	F05027-17	Nut, M8-1.25 Swaged Hex		1
3	F05027-44	Nut, M8 x 1.25 Flanged Nylock		4
4	533649-1-US	Weldment, MP200 Motor Mount		1
5	130952	Plate, Motor Adjustment		1
6	F05026-4	Washer, M8 Flat		8
	F05011-131	Washer, M8 Flat Zinc 100PK		8
7	F05005-150	Bolt, M8x1.25x20mm SHCS		8
8	F05021-17	Bolt, M8-1.25 x 25 Carriage Class 8.8		4
9	F05021-53	Screw, M8-1.25x12mm SHSS Cup Point		2
	F05021-7	Screw, M8-1.25 x20 SHFP Set		1
10	533585-US	Pulley, 8PJx78.4mmx24mm		1
11	533680-US	Belt, Multi-Groove 8 PJ 432(170J8)		1
12	F05011-45	Washer, M8 Split Lock		4
13	537385-UL	MTR, 3kW, 3ph, 230/460, 60Hz, IE3, IMV19	(MP260EB Both Sides)	1
	133324	Key, 8mmx7mmx45mm Round Ends		1
	533651-UL	MTR, 2.7kW, 1ph, 230, 60Hz, IE3 IMB34/2	(MP260EA Both Sides)	1
	133323	Key, 8mmx7mmx40mm Round Ends		1

### 4.3 Horizontal Upper Cutter Drive

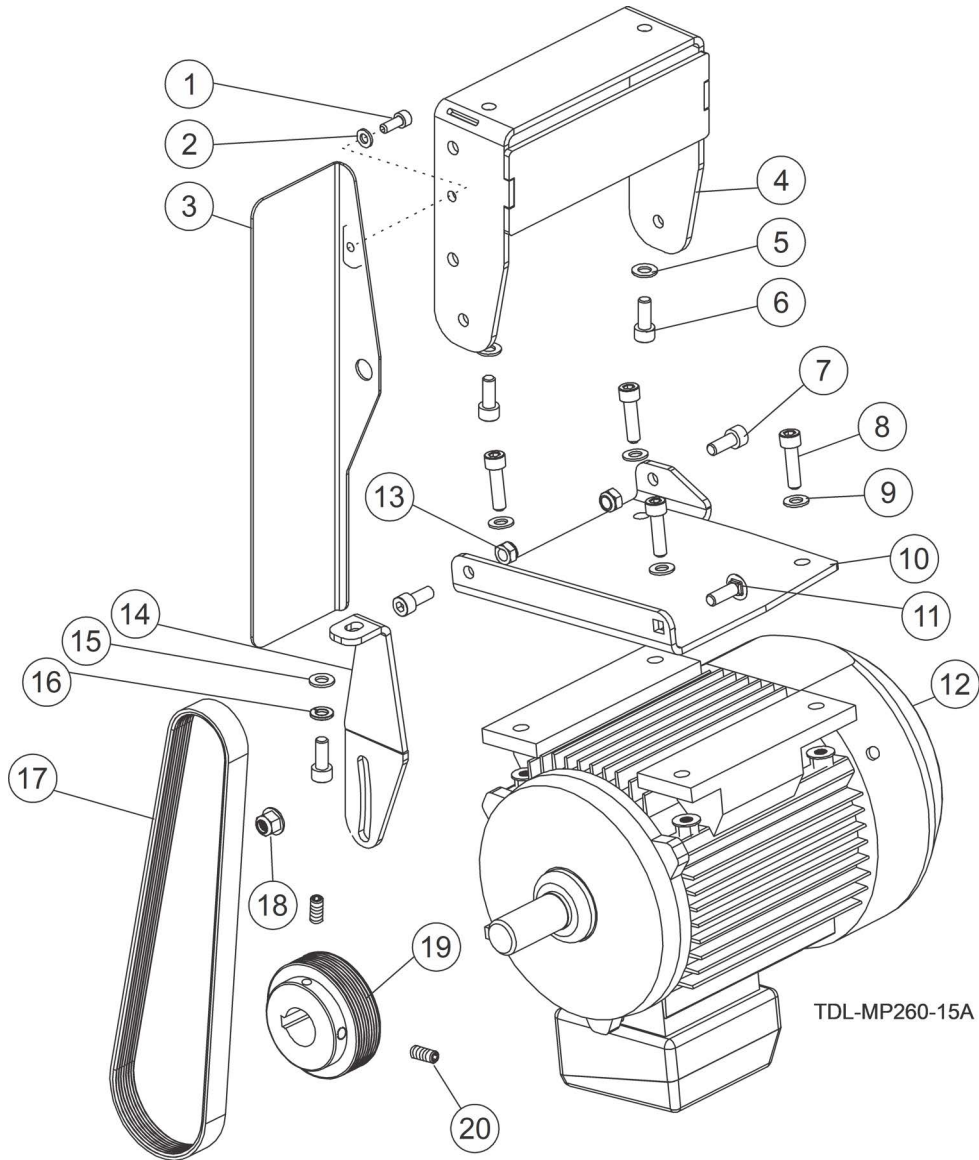


REF	PART #	DESCRIPTION	COMMENTS	QTY.
	537035-6U-US	<b>ASSY, HORIZONTAL UPPER CUTTER PRO DRIVE</b>	<b>(MP260EA)</b>	1
	537035-U-US	<b>ASSY, HORIZONTAL UPPER CUTTER PRO DRIVE</b>	<b>(MP260EB)</b>	1
<b>1</b>	535895-1-US	Wldmnt, Motor Plate		1
<b>2</b>	533651-UL	MTR, 2.7kW, 1ph, 230, 60Hz, IE3 IMB34/2	<b>(MP260EA)</b>	1
	133323	Key, 8mmx7mmx40mm Round Ends		1
<b>3</b>	F05026-4	Washer, M8 Flat		11
<b>4</b>	F05010-132	Nut, M8-1.25 Hex Nylock		4
<b>5</b>	F05021-1	Screw, M8-1.25 x 30 SHC		4
<b>6</b>	F05011-45	Washer, M8 Split Lock		3
<b>7</b>	F05005-150	Bolt, M8x1.25x20mm SHCS		3
<b>8</b>	533585-P-US	Pulley, 8PJx78.4mmx28mm		1
<b>9</b>	F05021-53	Screw, M8-1.25x12mm SHSS Cup Point		3
	F05021-7	Screw, M8-1.25 x20 SHFP Set		1
<b>10</b>	537022-US	Belt, Multi-Groove 8 PJ 1295(510J8)		1
<b>11</b>	533586	Pulley, 8PJx48mmx28mm		1

# 4 Motor Kits

## Horizontal Bottom Cutter Drive

### 4.4 Horizontal Bottom Cutter Drive



REF	PART #	DESCRIPTION	COMMENTS	QTY.
	537031-6U-US	<b>ASSY, HORIZONTAL BOTTOM CUTTER DRIVE</b>	<b>(MP260EA)</b>	1
	537031-U-US	<b>ASSY, HORIZONTAL BOTTOM CUTTER DRIVE</b>	<b>(MP260EB)</b>	1
	537565-US	Assy, Belt Guard Assembly		1
<b>1</b>	F05004-206	Screw, M6-1.0 x 16mm SHCS		1
<b>2</b>	F05026-1	Washer, M6 Flat Class 4		1
<b>3</b>	537565-1-US	Weldment, Belt Guard		1
	537539-US	Assy, Motor Mount Assembly		1

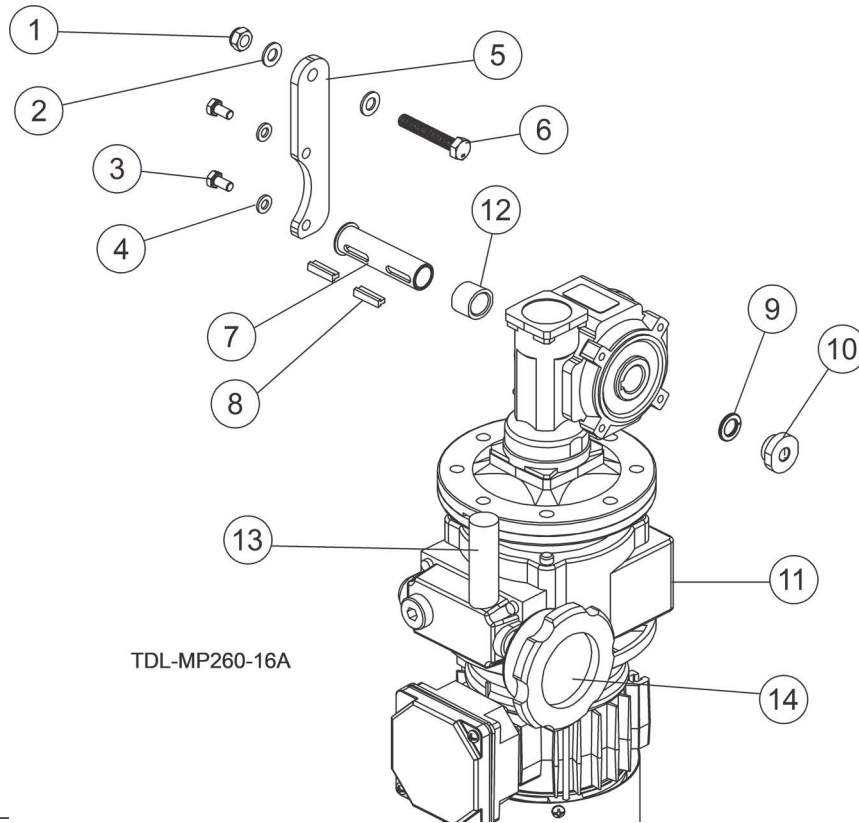


REF	PART #	DESCRIPTION	COMMENTS	QTY.
4	537538-1-US	Weldment, Motor Mount		1
5	F05026-4	Washer, M8 Flat		2
6	F05005-150	Bolt, M8x1.25x20mm SHCS		2
7	F05005-150	Bolt, M8x1.25x20mm SHCS		3
8	F05021-1	Screw, M8-1.25 x 30 SHC		4
9	F05026-4	Washer, M8 Flat		4
10	537023-1-US	Bracket, Motor Plate		1
11	F05021-17	Bolt, M8-1.25 x 25 Carriage Class 8.8		1
12	537386-UL	MTR, 3kW, 3ph, 230/460, 60Hz, IE3, IMB3		1
	133324	Key, 8mmx7mmx45mm Round Ends		1
13	F05010-132	Nut, M8-1.25 Hex Nylock		2
14	537024-1-US	Bracket, Mounting Bracket		1
15	F05011-45	Washer, M8 Split Lock		1
16	F05011-131	Washer, M8 Flat Zinc 100PK		.01
17	535803-US	Belt, Multi-Groove 8 PJ 737(290J8)		1
18	F05027-44	Nut, M8 x 1.25 Flanged Nylock		5
19	533585-US	Pulley, 8PJx78.4mmx24mm		1
20	F05021-53	Screw, M8-1.25x12mm SHSS Cup Point		2

# 4 Motor Kits

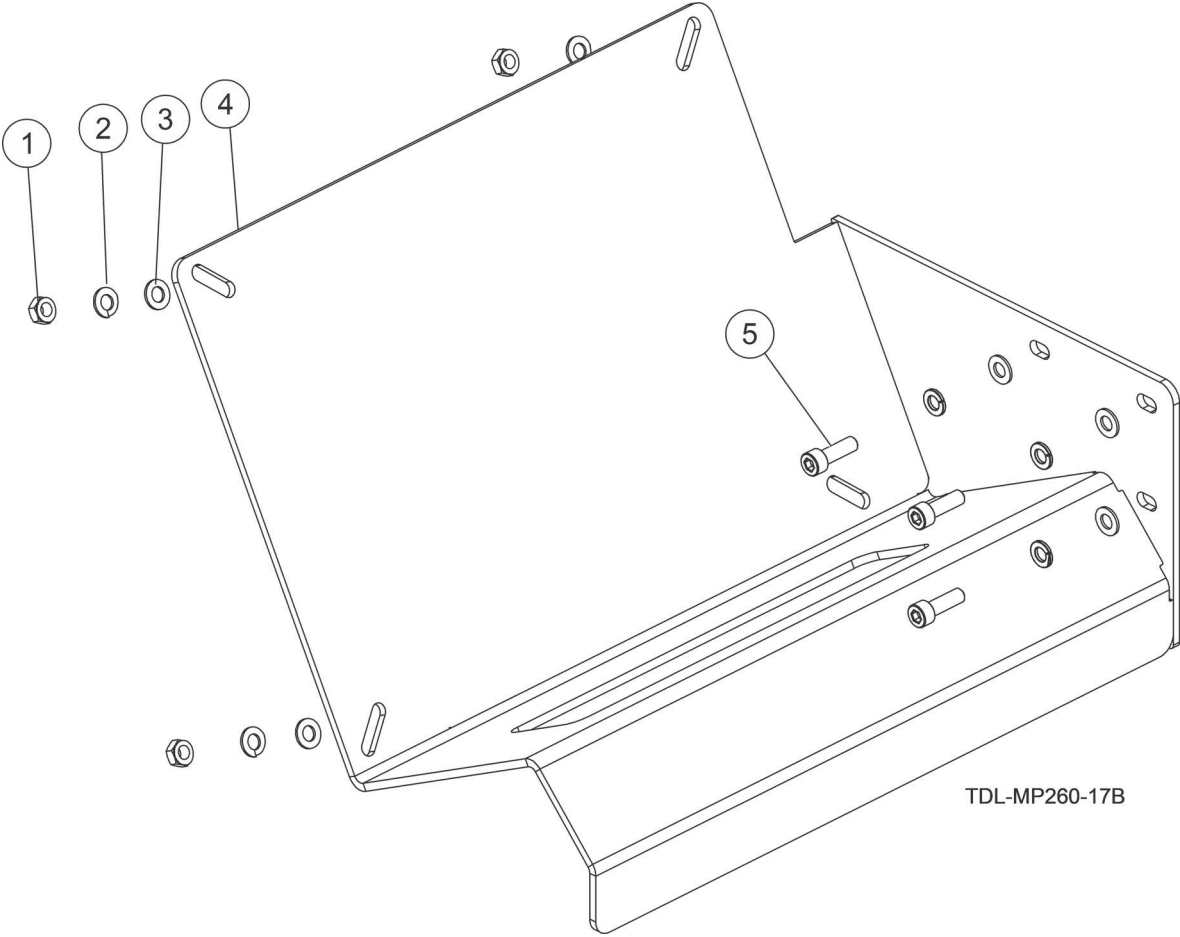
## Feed Drive

### 4.5 Feed Drive



REF	PART #	DESCRIPTION	COMMENTS	QTY.
	537036-6U-US	<b>ASSY, MP260 PRO FEED DRIVE</b>	<b>(MP260EA)</b>	1
	537036-U-US	<b>ASSY, MP260 PRO FEED DRIVE</b>	<b>(MP260EB)</b>	1
1	F05010-132	Nut, M8-1.25 Hex Nylock		1
2	F05026-4	Washer, M8 Flat		2
3	F05005-99	Screw, M6-1x12 HHC FT GR8-8 Din 933		2
4	F05026-1	Washer, M6 Flat Class 4		2
5	537037-1-US	Plate, Arm Torque		1
6	F05021-46	Bolt, M8-1.25 x 50 HH FT Zinc		1
7	533731-US	Bushing, Reducer		1
8	533732-US	Key, Stepped		2
9	F05011-88	Washer, 10mm Split Lock		1
10	533733-1-6U-US	Nut, M10	(MP260EA)	
	533733-1-US	Nut, M10 (MP260EB)		1
11	532807-UL	MTR, 0.55kW, 1ph, 230V, 60Hz, IE3, IMB5		1
	533640-UL	Reducer, PRO KC40/P15+NF003+SKH63-2C		1
12	541449-US	Bushing, Reducing	<b>(MP260EA ONLY)</b>	1
13	084671	Oil Fill Plug For Planer/Moulders		1
14	546928-S	Knob, Variable Speed		1

4.6 Electric Box Bracket

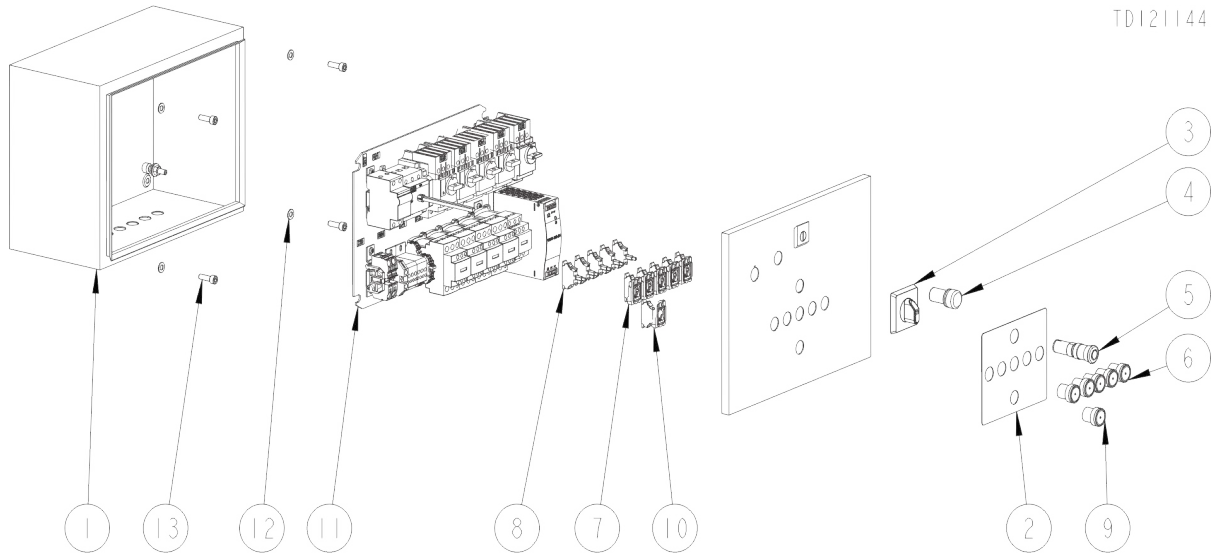


REF	PART #	DESCRIPTION	COMMENTS	QTY.
	537032-US	<b>ASSY, ELECTRIC BOX BRACKET COMPLETE</b>		1
1	F05010-162	Nut, M8-1.25 Hex Nylock		4
2	F05011-45	Washer, M8 Split Lock		7
3	F05026-4	Washer, M8 Flat		7
4	533619-1-US	Weldment, Electric Box Bracket		1
5	F05021-33	Screw, M8-1.25x25 SHC BO		3

# 4 Motor Kits

## Electrical Box, MP260EA

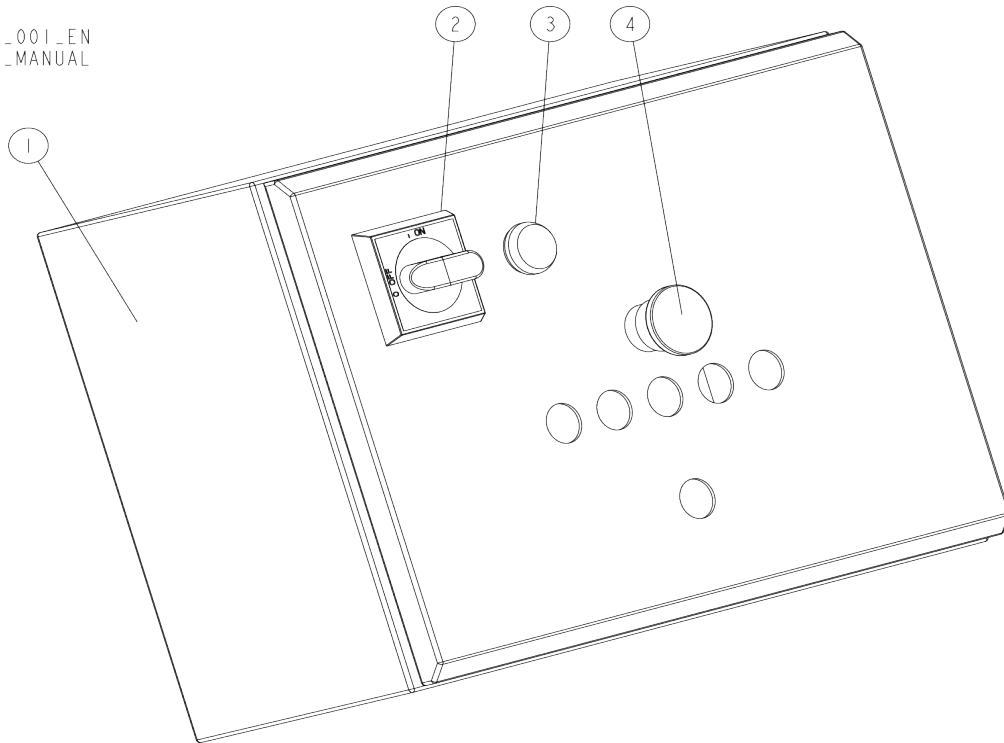
### 4.7 Electrical Box, MP260EA



REF	PART #	DESCRIPTION	COMMENTS	QTY.
	121144	<b>ASSY, CONTROL ENC. MP260 240VAC 1PH</b>	For detailed information, please see the electrical manual.	1
1	121139	Enclosure, Elec. Control MP260		1
2	121145	Decal, Control Panel MP260		1
3	050883-1	Handle, Disconnect RED/YEL 6mm Shaft		1
4	068321	Pilot Light, 24V White LED Monoblock		1
5	121143	E-Stop, Red, Monoblock, 1NC, Mushroom		1
6	052503	Switch Head, PB Green Flush Illum ZB5		5
7	068952	Collar, Mount 1NO ZB5		5
8	068910	Light Module, Green ZB5		5
9	127080	Push Button Head, Flush Red		1
10	068950	Collar, Mount 1NC ZB5		1
11	121138	Assy, Panel Insert, MP260 240V 1PH		1
12	F05026-4	Washer, M8 Flat		4
13	F05021-33	Screw, M8-1.25x25 SHC BO		4

### 4.8 Electrical Box, MP260EB

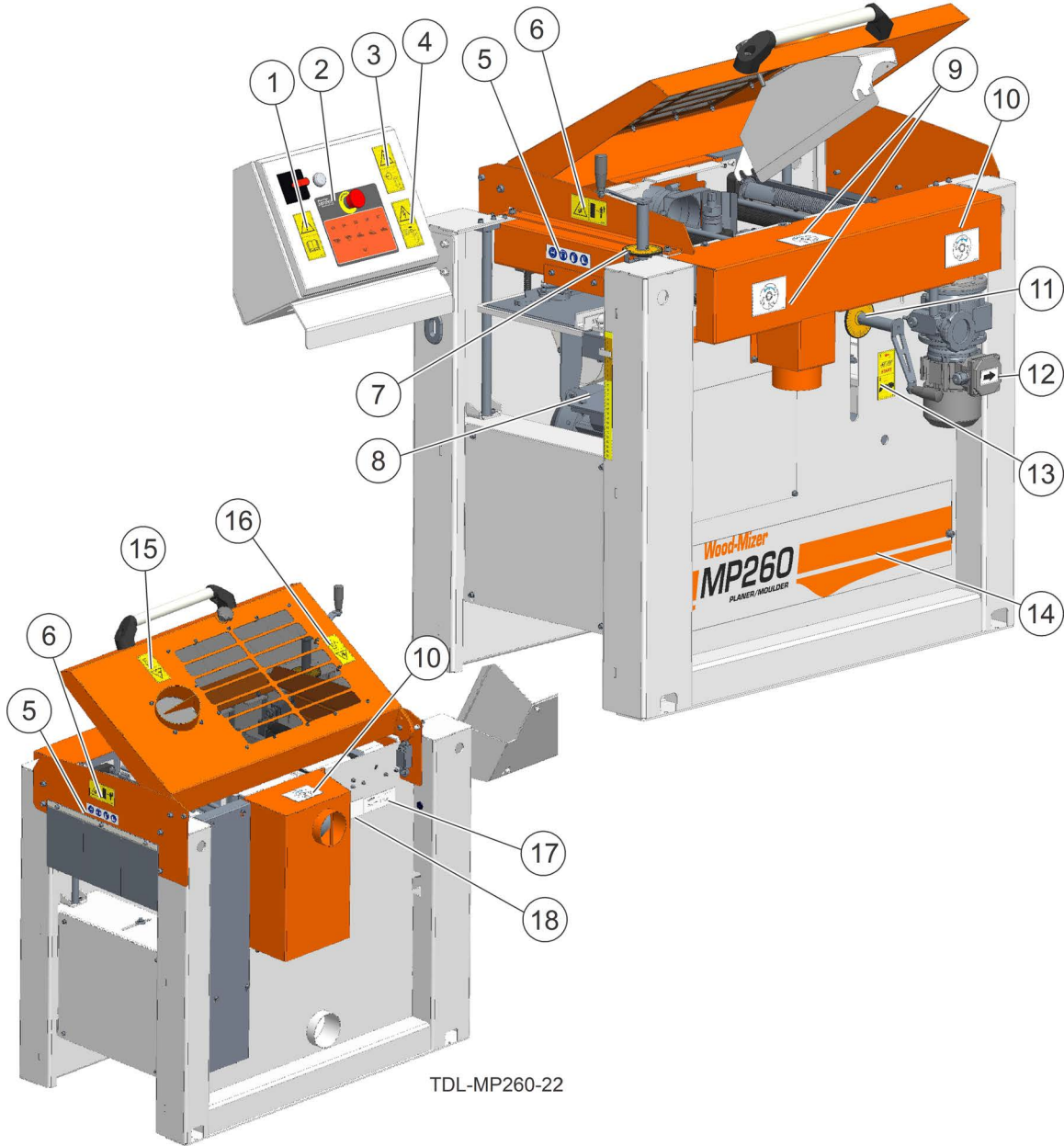
532791\_001\_EN  
 532791\_MANUAL



REF	PART #	DESCRIPTION	COMMENTS	QTY.
	532791-2U	<b>CONTROL ASSY, MP260, 4-SIDED, 240V, 3Ph</b>	<b>(MP260EB).</b>	1
1	534148	Electric Box		1
2	502312-1	Handle, OHB S2a1 ABB Switch		1
3	519612	Light, XB7EV7BP White Control		1
4	502315	Button, Emergency Stop		1

## SECTION 5 DECALS

### 5.1 Decals MP260

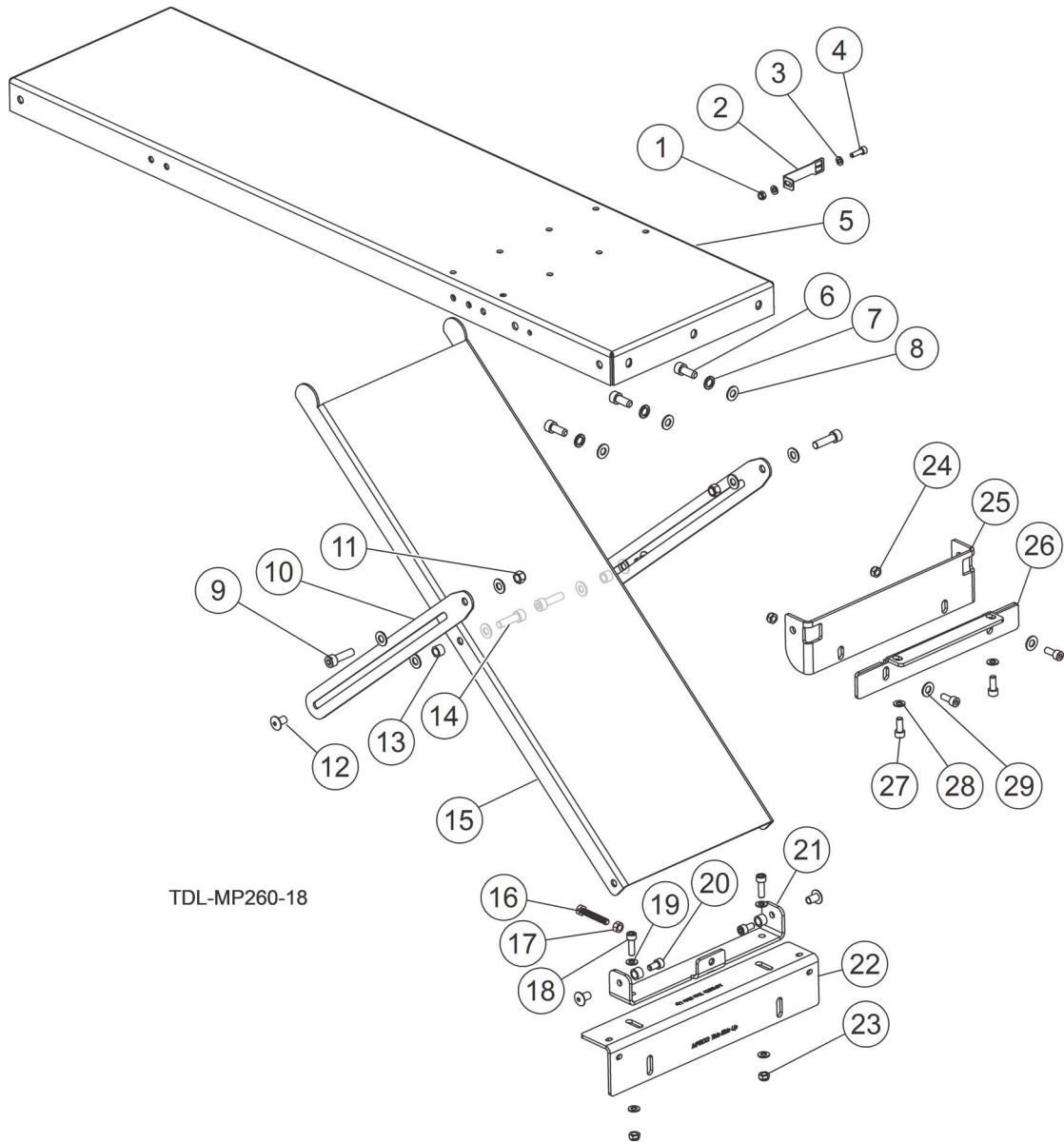


REF	PART #	DESCRIPTION	COMMENTS	QTY.
	130953	<b>DECAL KIT, MP260</b>		1
1	96317	Decal, Read The Operator Manual		1
2	541123-US	Decal, Control Panel MP260		1

REF	PART #	DESCRIPTION	COMMENTS	QTY.
3	96316	Decal, Hazardous Voltage Inside The Electric Box (Pictogram)		1
4	96319	Decal, Remove The Plug Before Opening The Electric Box (Pictogram)		1
5	535402	Decal - Warning Pictograms		1
6	99221	Decal, Keep A Safe Distance Pictogram		2
7	533577-US	Decal, MP260 Round Scale		2
9	539444-US	Decal, Shaft Rotation Direction		2
10	536401-US	Decal, Shaft Rotation Direction		2
11	533579-US	Decal, Vertical Scale		1
12	S20097	Decal, Motor Direction		1
13	535252-US	Decal, Use Only When Feed Is On		1
14	541122-US	Decal, MP260 Planer Type		1
15	99220	Decal, Close Guards Before Operating		1
16	524993-US	Decal, Hand Injury Hazard (Pictogram)		1
17	P09971	Decal, VIN Overlay		1
18	015820	Decal, ID Serial No.		1

## SECTION 6 OPTIONS

### 6.1 Infeed/Outfeed Tables



REF	PART #	DESCRIPTION	COMMENTS	QTY.
	265-000-US	<b>ASSY, TABLE</b>		2
	265-001-US	Assy, Table		1
<b>1</b>	117477	Assy, Indicator Gauge		1
<b>1</b>	F05010-200	Nut, M6-1.0 Nylon Lock		1
<b>2</b>	117476	Bracket, Indicator Gauge		1
<b>3</b>	F05026-1	Washer, M6 Flat Class 4		2



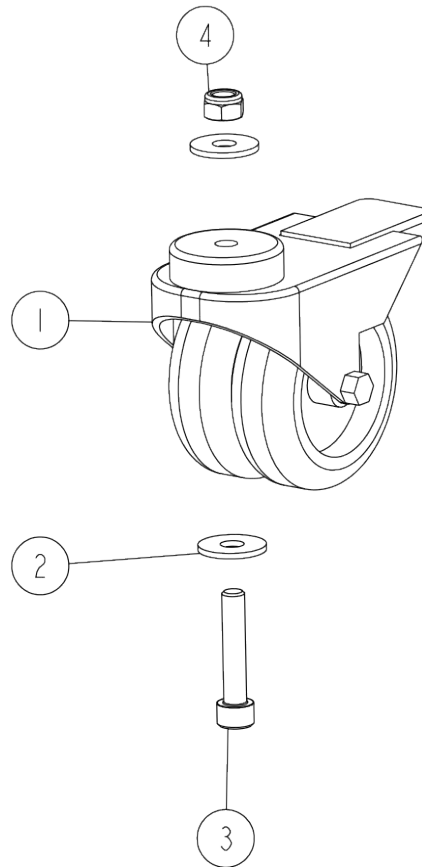
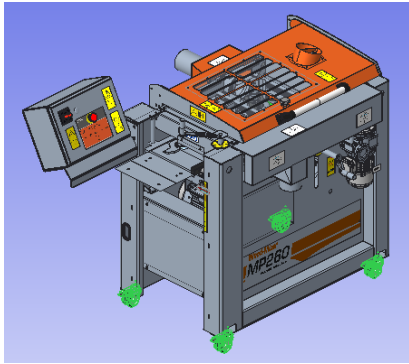
REF	PART #	DESCRIPTION	COMMENTS	QTY.
4	F05020-15	Screw, M6-1 x 20 SHC		1
5	265-100-1-US	Bracket, Table		1
6	F05022-12	Bolt, M10-1.5x25 SHC		3
7	F05011-88	Washer, 10mm Split Lock		3
8	F05011-134	Washer, M10 Flat SAE		9
9	533728-1-US	Plate, Guide		2
10	F05004-270	Nut, M10-1.50 Hex Nyl Lock		2
11	f81032-33	NUT, ERICSON M8 AN88 COLLAR ZINC		4
12	533724-US	Bushing, 0.409 x 0.591 x 0.394		4
13	F05005-150	Bolt, M8x1.25x20mm SHCS		2
14	265-101-1-US	Bracket, Support		1
15	F05021-46	Bolt, M8-1.25 x 50 HH FT Zinc		1
16	F05010-162	Nut, M8-1.25 Free Zinc Plate		1
17	F05021-33	Screw, M8-1.25x25 SHC BO		2
18	F05026-4	Washer, M8 Flat		8
19	F05021-10	Screw, M8-1.25x16 SHC		2
20	541453-1-US	Weldment, Channel		1
21	265-104-1-US	Bracket, Angle		1
22	F05004-220	Bolt, M10-1.50x35mm Lg SCS		2
23	F05010-132	Nut, M8-1.25 Hex Nylock		2
24	F05010-132	Nut, M8-1.25 Hex Nylock		2
25	265-106-2-US	Bracket, Handle		1
26	265-102-1-US	Bracket, Handle		1
27	F05005-150	Bolt, M8x1.25x20mm SHCS		4
28	F05026-4	Washer, M8 Flat		2
29	F05011-134	Washer, M10 Flat SAE		2

# 6 Options

## Castors

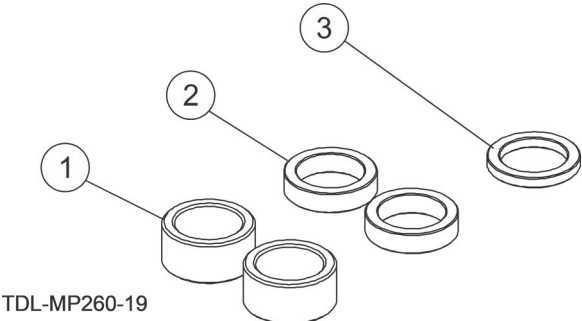
### 6.2 Castors

535163\_001  
535163\_MANUAL



REF	PART #	DESCRIPTION	COMMENTS	QTY.
	535166	<b>ASSY, CASTORS KIT, 4 PCS.</b>		1
	535163	Castor Wheel Assembly		4
1	533510	Dual Wheel Castor, KMDA-TPA 75S-HC		1
2	F81054-11	Washer, ISO 7093-1-8-200 HV-A2E.		2
3	F81002-29	Screw, M8x40-8.8 Hex Socket Head Cap Zinc		1
4	F81032-2	Nut, M8-8-b Hex Nylon Zinc Lock		1

**6.3 Bushing Kit**



REF	PART #	DESCRIPTION	COMMENTS	QTY.
	117362	<b>KIT, MP260 BUSHING</b>		1
<b>1</b>	533541-1-US	Bushing, 1-5/8ODx1.183IDx0.795		2
<b>2</b>	533539-1-US	Bushing, 1-5/8ODx1.183IDx0.394		2
<b>3</b>	533540-1-US	Bushing, 1-5/8ODx1.183IDx0.205		1