

LT15 Load Assist Kit

Safety, Operation, Maintenance & Parts Manual

LT15LAK

Rev. A1.00

Safety is our #1 concern!

April 2008

Form #1540

Models Effected:

LT15



WARNING! Read and understand this manual before using this machine.

California

Proposition 65 Warning



WARNING: Breathing gas/diesel engine exhaust exposes you to chemicals known to the State of California to cause cancer and birth defects or other reproductive harm.

Always start and operate the engine in a well-ventilated area.
If in an enclosed area, vent the exhaust to the outside.
Do not modify or tamper with the exhaust system.
Do not idle the engine except as necessary.

For more information go to www.P65warnings.ca.gov.



WARNING: Drilling, sawing, sanding or machining wood products can expose you to wood dust, a substance known to the State of California to cause cancer. Avoid inhaling wood dust or use a dust mask or other safeguards for personal protection.

For more information go to www.P65Warnings.ca.gov/wood.

Active Patents assigned to Wood-Mizer, LLC

Wood-Mizer, LLC has received patents that protect our inventions which are a result of a dedication to research, innovation, development, and design. Learn more at: woodmizer.com/patents

©2024 Wood-Mizer LLC

Printed in the United States of America, all rights reserved. No part of this manual may be reproduced in any form by any photographic, electronic, mechanical or other means or used in any information storage and retrieval system without written permission from

Wood-Mizer, LLC
8180 West 10th Street
Indianapolis, Indiana 46214

Table of Contents

Section-Page

SECTION 1 LOAD ASSIST KIT INSTALLATION

1.1	Winch.....	1-1
1.2	Wheel Assemblies.....	1-1

SECTION 2 LOAD ASSIST KIT OPERATION

2.1	Loading	2-1
2.2	Unloading.....	2-2

SECTION 3 LOAD ASSIST KIT REPLACEMENT PARTS

SECTION 1 LOAD ASSIST KIT INSTALLATION

The Load Assist Kit option is intended to assist a single person to load and unload the LT15 on and off a trailer. The option may be assembled to any LT15 model sawmill with two bed sections. If the LT15 is equipped with a third bed section, it must be removed before using the load assist option.

The customer should provide a tilt-style trailer with a single-post tongue. The size of the trailer should be at least 5' wide by 10' long with a load rating of at least 1,000 lbs. Be sure to factor in any other items to be hauled (such as a third bed section) when choosing the trailer size and capacity.



IMPORTANT! It is always the owner's responsibility to comply with all applicable federal, state and local laws, rules and regulations regarding the ownership, operation and towing of your Wood-Mizer sawmill. All Wood-Mizer mill owners are encouraged to become thoroughly familiar with these applicable laws and comply with them fully while using or towing the mill.

Follow all trailer and winch manufacturer's operating and safety instructions.

1.1 Winch

1. Follow the manufacturer's instructions provided with the winch to install the winch strap and handle to the winch.
2. Install the winch assembly to the winch stand with the provided three 3/8-16 x 1" hex head bolts, flat washers and lock nuts.
3. Position the winch stand on the trailer tongue post with the stand base approximately 12" from the trailer.
4. Orient the stand so it angles away from the trailer.
5. Secure the winch stand to the post with the winch mount plate and four 3/8-16 x 4 1/2" hex head bolts, flat washers and lock nuts See Fig. 1-1.
6. Install the winch hook plate to the hole in the motor mount plate on the sawmill.

NOTE: If your sawmill was manufactured before 3/08, you will need to drill a 13/32" diameter hole in the motor mount plate at the dimensions shown. Secure the winch hook plate to the hole using the provided 5/16-18 x 1" hex head bolt and lock nut. See Fig. 1-2.

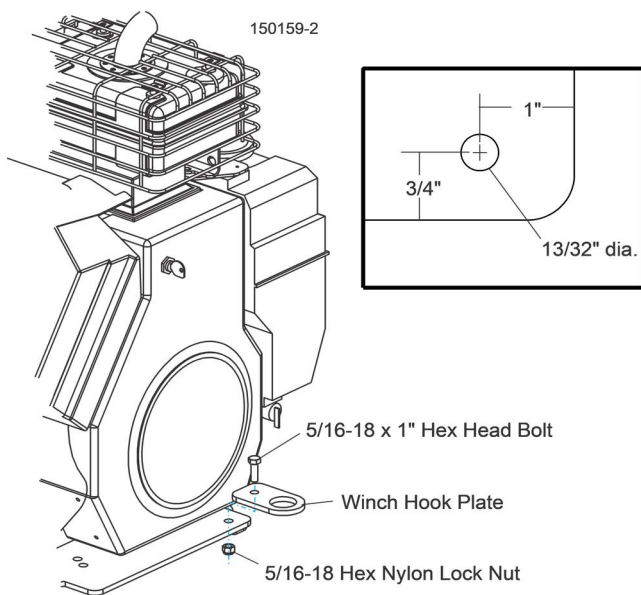


FIG. 1-2

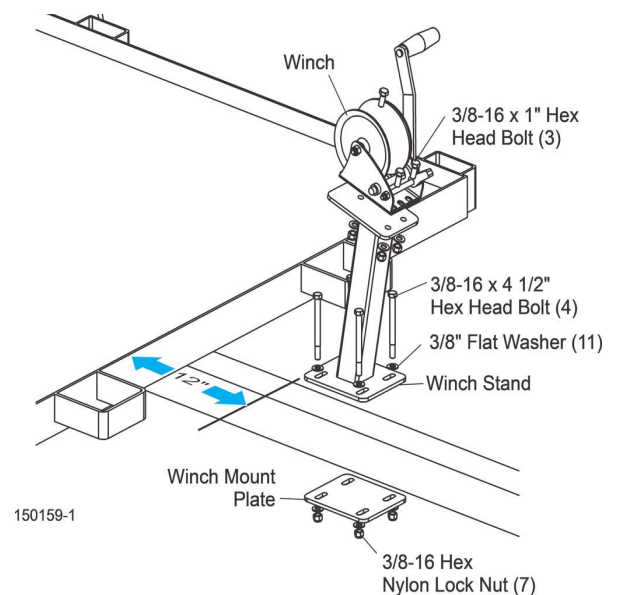


FIG. 1-1

1.2 Wheel Assemblies

1. Disassemble the feed rope from the mount bracket at the front of the sawmill bed.
2. Disassemble the feed rope bracket and hardware from the bed.

3. Install the left wheel mount assembly to the bed tube, aligning the holes with the holes in the bed.
4. At the location where the feed rope mounts, insert one of the provided 1/2-13 x 3 1/2" hex head bolts to the hole in the bed cross brace.
5. Replace the feed rope bracket and hardware. Install the provided 1/2" lock washer and jam nut to the bolt.
6. Continue the bolt through the wheel mount and secure with a flat washer and lock nut.

NOTE: Feed rope bracket hardware will vary depending on bed revision. Beds rev. F.00 and newer use one flat washer & a spacer bushing. Prior revision beds use two flat washers.
7. At the other cross brace hole, insert a 1/2-13 x 3 1/2" hex head bolt and wheel mount. Secure with a flat washer and lock nut.
8. After the wheel mount is installed, tighten the jam nut to secure the feed rope bracket against the bed cross brace and re-install the feed rope to the bracket. See Fig. 1-3.

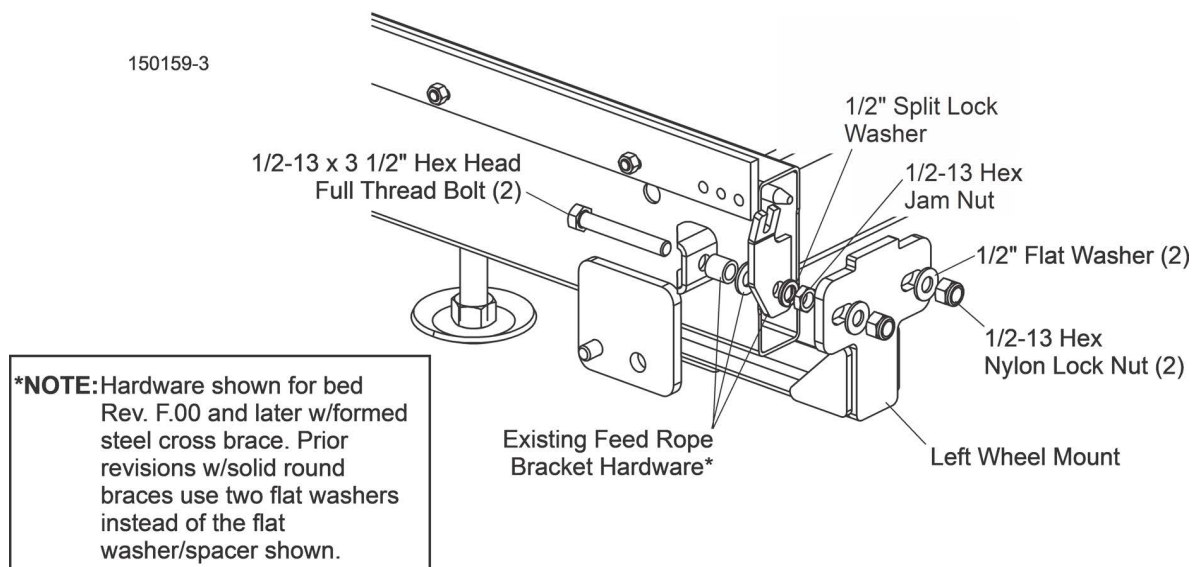


FIG. 1-3

9. Install the right wheel mount assembly to the other side of the bed using two 1/2-13 x 3 1/2" hex head bolts, flat washers and lock nuts. See Fig. 1-4.

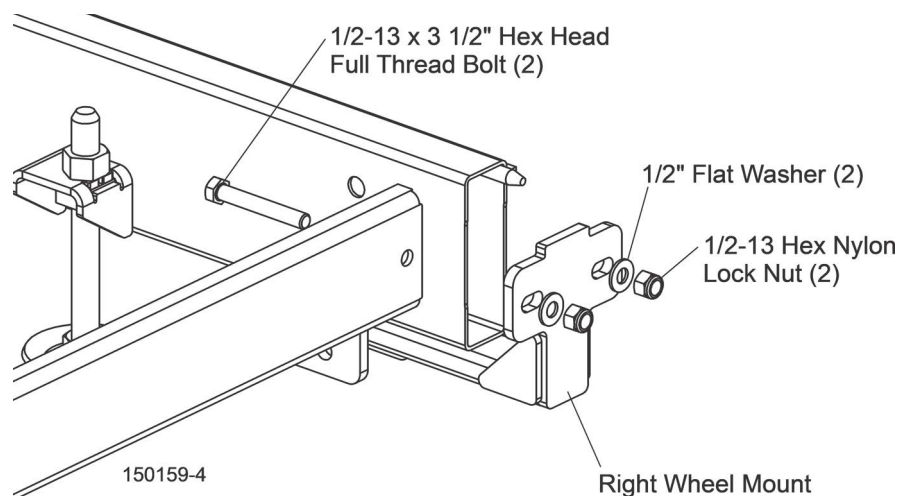


FIG. 1-4

1 Load Assist Kit Installation

Wheel Assemblies

10. Install a wheel to each pivot arm and secure with a 5/8-11 hex nylon lock jam nut. See Fig. 1-5.
11. Assemble the left wheel assembly to the left wheel mount and secure with a retaining pin.
12. Repeat for the right wheel assembly to the right wheel mount.
13. Check the air pressure of the tires on each wheel assembly and inflate per manufacturer's specifications on the tire.

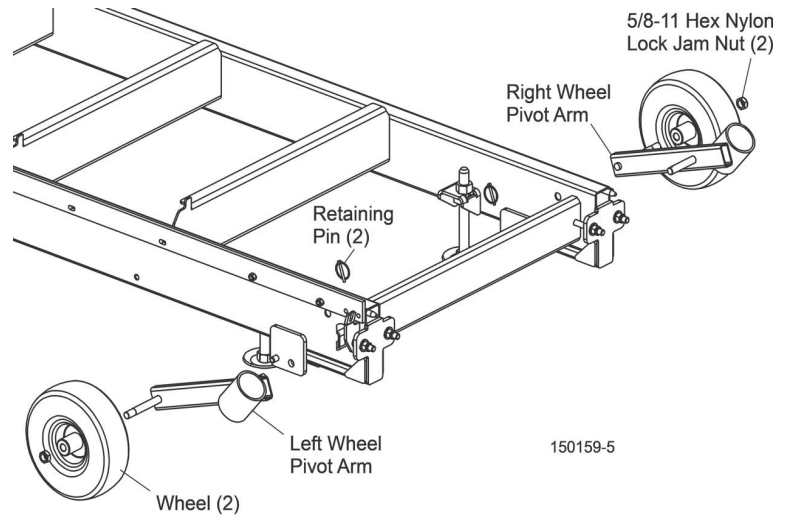


FIG. 1-5

SECTION 2 LOAD ASSIST KIT OPERATION

2.1 Loading

! DANGER! Keep all persons out of the path of moving equipment when loading or unloading sawmill. Follow all safety precautions provided in the winch manufacturer's instructions. Failure to do so will result in serious injury.

1. Move the saw head to the rear of the sawmill.
2. Lower the head all the way down to the bed.
3. Insert a cant hook, or similar prying tool into the tube on the left-side wheel assembly. Push up to lift the wheel until the spring-loaded locking pin secures the wheel in place.
4. Repeat for the right-side wheel assembly.

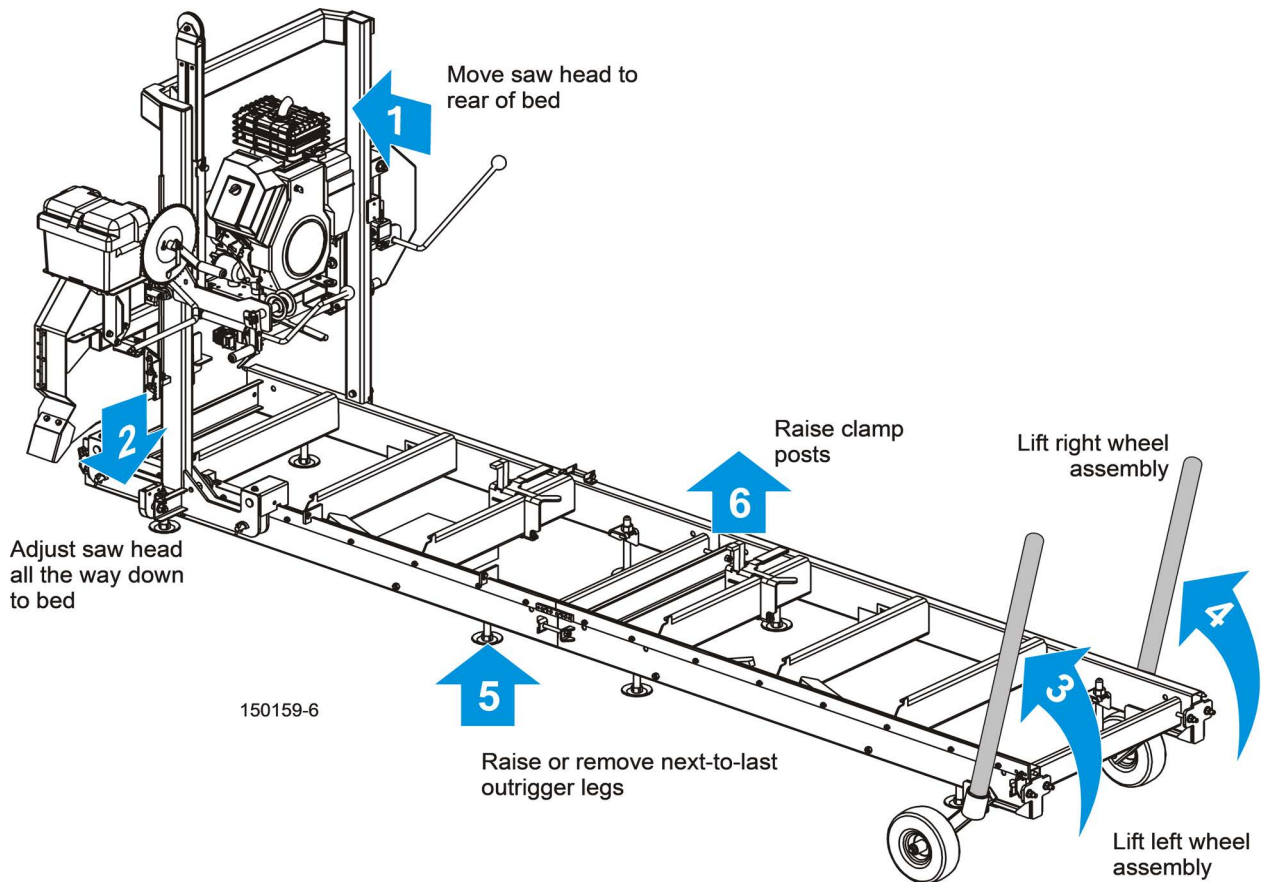


FIG. 2-1

5. Adjust the next-to-last outriggers up or remove them from the bed.
6. Adjust the clamp posts all the way up.
7. Position the trailer at the front of the sawmill. Be sure the vehicle and trailer are aligned and centered with the sawmill. Turn the winch handle to orient the handle toward the sawmill.
8. Carefully back the trailer under the lift assist wheels. Continue back until the front sawmill bed cross brace is about 1" from the winch handle.
9. Insert the cant hook into the tube on the right-side wheel assembly. Lift to relieve pressure on the locking pin. Pull the locking pin and lower the cant hook until the sawmill is resting on the trailer.
10. Repeat for the left-side wheel assembly. Remove the retaining pin and disassemble the wheel/arm assembly from the wheel mount.

2 Load Assist Kit Operation

Unloading

- Place the winch ratchet pawl in the neutral position and pull the winch strap toward the saw head and hook onto the bracket on the motor mount plate.

WARNING! Keep clear of spinning winch handle. Failure to do so could cause personal injury.

- Lower the clamp posts.
- Raise the saw head just enough to clear any objects, such as trailer fenders, that may interfere with the saw head as it moves toward the front of the sawmill.
- Engage the ratchet pawl and turn the winch handle to pull the saw head toward the front of the sawmill.
- Stop when the front locking pin is aligned with the hole in the bed frame.
- Leave the winch strap hooked to the saw head to help secure it during transport.
- Rotate the front locking pin to the travel position so the pin engages the hole in the bed frame.
- Leave the rear locking pin in the operation position to prevent the saw head from tipping.

NOTE: See your LT15 operator's manual for detailed locking pin operating instructions.

- Lower the saw head all the way down to the bed. If applicable, remove the water lube tank and mounting bracket from the saw head.

- Strap the sawmill securely to the trailer (straps not included). Use at least two straps, one to secure the bed and one to secure the saw head.

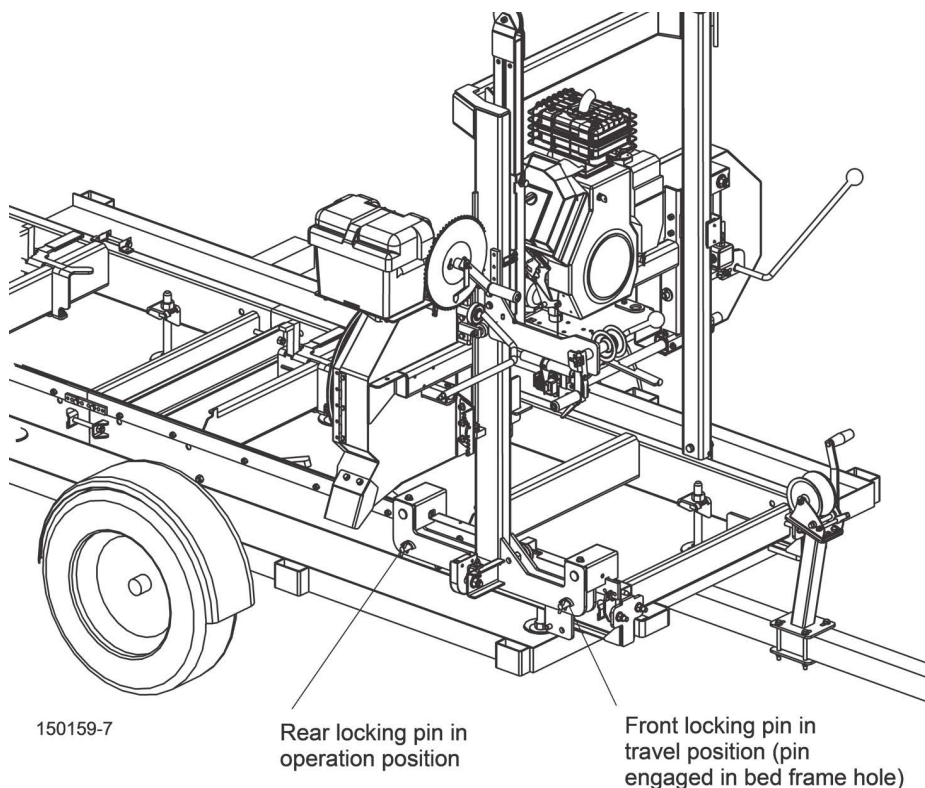


FIG. 2-2

2.2 Unloading

DANGER! Keep all persons out of the path of moving equipment when loading or unloading sawmill. Follow all safety precautions provided in the winch manufacturer's instructions. Failure to do so will result in serious injury.

- Remove straps holding sawmill to the trailer.
- Raise the saw head just enough to clear any objects, such as trailer fenders, that may interfere with the saw head as it moves toward the rear of the sawmill.
- Place the front locking pin in the operation position.

The rear locking pin should already be in the operation position. See your LT15 operator's manual for detailed locking pin operating instructions.

- Make sure the winch strap is still hooked to the bracket on the motor mount plate.
- Place the winch ratchet pawl in reverse.
- Let out enough of the winch strap so you can move the saw head just to the tilting point of the trailer.
- Place the winch ratchet pawl in forward.

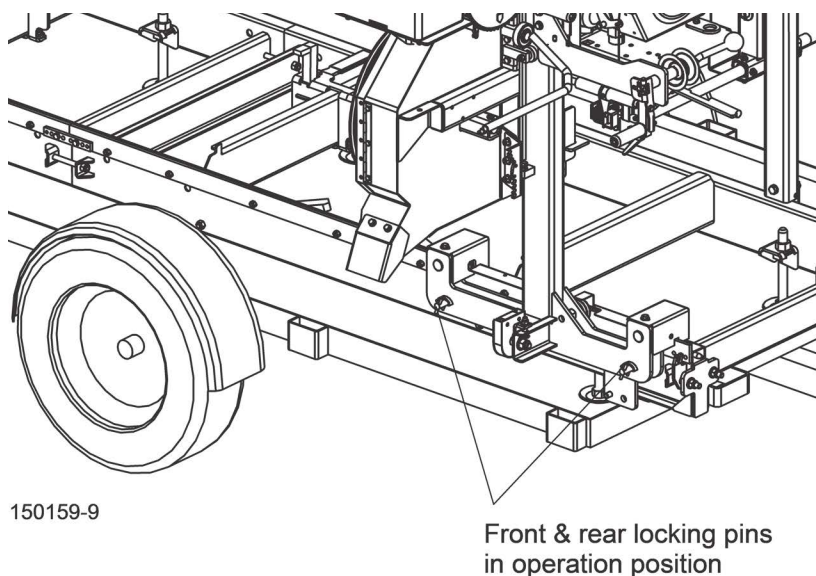


FIG. 2-3

8. Push the saw head toward the rear of the sawmill until the winch strap is tight, just before the trailer tilts to the ground.
9. Grasp the winch handle securely and move the ratchet pawl to reverse.
10. Turn the winch handle to allow the saw head to move back and tilt the trailer down to the ground.
11. Continue turning the handle until the saw head reaches the rear of the sawmill.

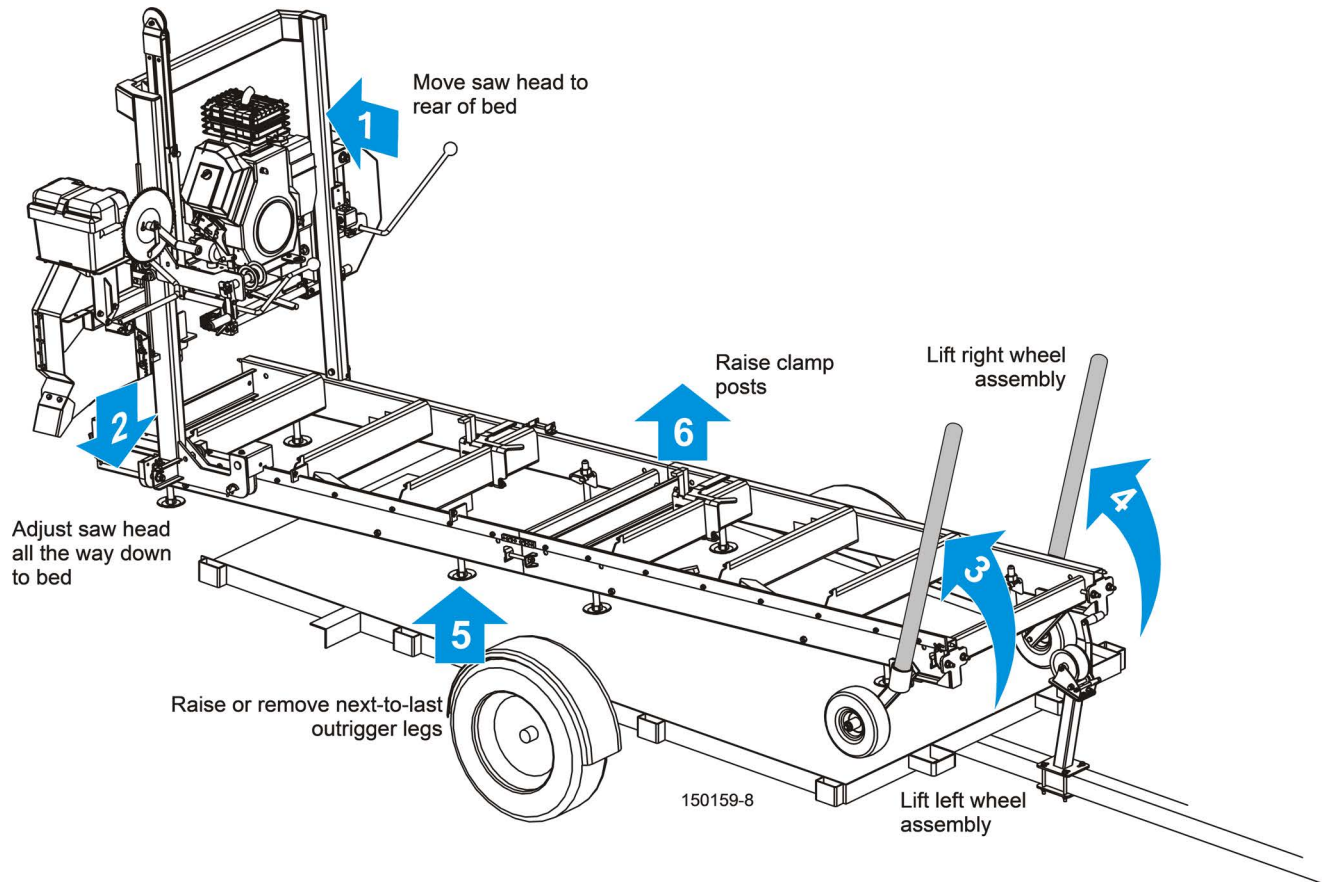



FIG. 2-4

12. With the rear end of the sawmill resting on the ground and the saw head all the way at the rear of the sawmill, lower the saw head all the way down to the bed.
13. Adjust the next-to-last outriggers up or remove them from the bed.
14. Adjust the clamp posts all the way up.
15. Unhook the winch strap from the bracket on the motor mount plate and wind the strap onto the winch.
16. Install the left-side wheel assembly to the wheel mount bracket.
17. Insert a cant hook, or similar prying tool into the tube on the left-side wheel assembly. Push up to lift the wheel until the spring-loaded locking pin secures the wheel in place.
18. Repeat for the right-side wheel assembly.
19. Slowly pull the trailer out from under the sawmill until the sawmill rests entirely on the ground.
20. Insert the cant hook into the tube on the right-side wheel assembly.
21. Lift to relieve pressure on the locking pin.
22. Pull the locking pin and lower the cant hook until the sawmill is resting on the ground
23. Repeat for the left-side wheel assembly.

2 Load Assist Kit Operation

Unloading

24. Remove the retaining pin and disassemble the wheel/arm assembly from the wheel mount.

 **CAUTION!** The left-side wheel must be removed to avoid interference with the saw head carriage during operation. The right-side wheel can remain assembled to the sawmill.

25. Reinstall or adjust the next-to-last outrigger legs.

26. See your LT15 operator's manual for complete sawmill setup instructions.

SECTION 3 LOAD ASSIST KIT REPLACEMENT PARTS

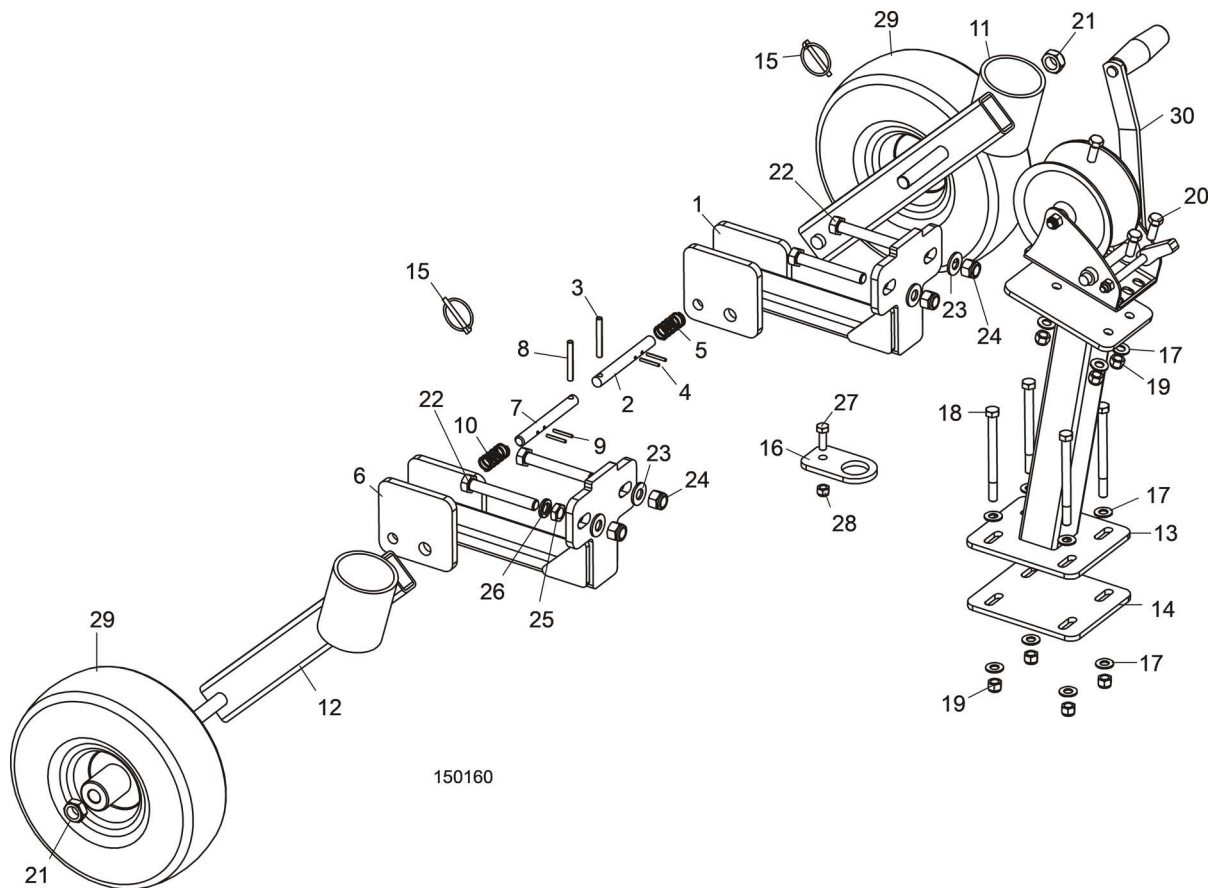


FIGURE 3-1.

REF	PART #	DESCRIPTION	COMMENTS	QTY.
	LT15LAK	KIT, LT15 LOAD ASSIST		1
	057498	BRACKET ASSEMBLY, RIGHT WHEEL MOUNT		1
1	057451	BRACKET WELDMENT, WHEEL MOUNT		1
2	057496	PIN, 1/2" X 4 1/2" STOP		1
3	F05012-46	PIN, 1/4" X 2" ROLL		1
4	F05012-34	Pin, 1/8" x 1" Roll		2
5	P04282	SPRING, .715 X 1.53" X .068" STAIN-LESS COMPRESSION		1
	057497	BRACKET ASSEMBLY, LEFT WHEEL MOUNT		1
6	057451	BRACKET WELDMENT, WHEEL MOUNT		1
7	057496	PIN, 1/2" X 4 1/2" STOP		1
8	F05012-46	PIN, 1/4" X 2" ROLL		1
9	F05012-34	Pin, 1/8" x 1" Roll		2
10	P04282	SPRING, .715 X 1.53" X .068" STAIN-LESS COMPRESSION		1
11	057412	Arm Weldment, Right Wheel Pivot		1
12	057413	Arm Weldment, Left Wheel Pivot		1
13	057448	Stand Weldment, Winch Mount		1

REF	PART #	DESCRIPTION	COMMENTS	QTY.
14	057446	Plate, Winch Mount		1
15	017604	Pin, 3/16" Retaining w/Chain		2
16	057449	Plate, Winch Hook		1
17	F05011-3	Washer, 3/8" SAE Flat		11
18	F05007-35	Bolt, 3/8-16 x 4 1/2" Hex Head		4
19	F05010-10	Nut, 3/8-16 Hex Nylon Lock		7
20	F05007-87	Bolt, 3/8-16 x 1" Hex Head Grade 5		3
21	F05010-96	Nut, 5/8-11 Hex Nylon Lock Jam		2
22	F05008-11	Bolt, 1/2-13 x 3 1/2" Hex Head Full Thread		4
23	F05011-2	Washer, 1/2" SAE Flat		4
24	F05010-8	Nut, 1/2-13 Hex Nylon Lock		4
25	F05010-31	Nut, 1/2-13 Hex Jam		1
26	F05011-9	Washer, 1/2" Split Lock		1
27	F05006-27	Bolt, 5/16-18 x 1 Hex Head Grade 5		1
28	F05010-58	Nut, 5/16-18 Hex Nylon Lock		1
29	006346	Wheel Assembly, 10" Pneumatic Caster		2
30	006347	Winch Assembly, 1500lb Single Speed 2-Way		1
	006348	Strap, 1500lb Replacement Winch		1
	M1540	Manual, LT15LAK Option		1