

LT40/50 MKIII Debarker Option

Safety, Installation, Operation,
Maintenance & Parts Manual

110213 MKIII Debarker Kit rev. C.00

Safety is our #1 concern!

Form #2314

Models Effected:

LT40

LT40HD

LT50HD



WARNING! Read and understand this manual before using this machine.

California

Proposition 65 Warning



WARNING: Breathing gas/diesel engine exhaust exposes you to chemicals known to the State of California to cause cancer and birth defects or other reproductive harm.

Always start and operate the engine in a well-ventilated area.
If in an enclosed area, vent the exhaust to the outside.
Do not modify or tamper with the exhaust system.
Do not idle the engine except as necessary.

For more information go to **www.P65warnings.ca.gov**.



WARNING: Drilling, sawing, sanding or machining wood products can expose you to wood dust, a substance known to the State of California to cause cancer. Avoid inhaling wood dust or use a dust mask or other safeguards for personal protection.

For more information go to **www.P65Warnings.ca.gov/wood**.

Active Patents assigned to Wood-Mizer, LLC

Wood-Mizer, LLC has received patents that protect our inventions which are a result of a dedication to research, innovation, development, and design. Learn more at: woodmizer.com/patents

©2024 Wood-Mizer LLC

Printed in the United States of America, all rights reserved. No part of this manual may be reproduced in any form by any photographic, electronic, mechanical or other means or used in any information storage and retrieval system without written permission from

Wood-Mizer, LLC
8180 West 10th Street
Indianapolis, Indiana 46214

SECTION 1 SAFETY

1.1 Safety Symbols 1-1
1.2 Safety Instructions..... 1-1
 Observe ALL Safety Instructions..... 1-1
1.3 Installation and Maintenance 1-1
1.4 Operation and Towing 1-1

SECTION 2 ALIGNMENT

2.1 Level the in/out swing..... 2-1
2.2 Adjust the blade height 2-2

SECTION 3 OPERATION AND MAINTENANCE

3.1 Travel Lock Pin..... 3-1
3.2 Control Overview..... 3-1
3.3 Operation..... 3-2
3.4 Maintenance 3-2
3.5 Troubleshooting 3-3


SECTION 4 REPLACEMENT PARTS


4.1 How To Use The Parts List..... 4-1
 To Order Parts 4-1
4.2 Sample Assembly..... 4-1
4.3 Torque Values 4-2
4.4 Mechanical Assembly 4-3
4.5 Pivot Arm Assembly 4-5
4.6 Mount Arm Assembly..... 4-6
4.7 In/Out Motor Drive Assembly 4-7
4.8 Blade Motor Assembly 4-8
4.9 Blade Housing Assembly..... 4-9
4.10 Pivot Stop Assembly..... 4-10
4.11 Debarker Control Assembly..... 4-11


SECTION 1 SAFETY

1.1 Safety Symbols

The following symbols and signal words call your attention to instructions concerning your personal safety. Be sure to observe and follow these instructions.

 **DANGER!** indicates an imminently hazardous situation which, if not avoided, will result in serious injury or death.

 **WARNING!** suggests a potentially hazardous situation which, if not avoided, could result in serious injury or death.

 **CAUTION!** refers to potentially hazardous situations which, if not avoided, may result in minor or moderate injury or damage to equipment.

NOTICE indicates vital information.

1.2 Safety Instructions

OWNER/OPERATOR'S RESPONSIBILITY

The procedures listed in this manual may not include all ANSI, OSHA, or locally required safety procedures. **It is the owner/operator's responsibility and not Wood-Mizer LLC to ensure all operators are properly trained and informed of all safety protocols.** Owner/Operators are responsible for following all safety procedures when operating and performing maintenance to the equipment.

Observe ALL Safety Instructions

NOTICE Read the entire Operator's Manual before operating this equipment.

Note all safety warnings throughout this manual and those posted on the machine.

Be able to access this manual at all times while operating this equipment.

Read additional manufacturer's manuals and observe their applicable safety instructions.


Only persons who have read and understood the entire operator's manual should operate this equipment.

This equipment is not intended for use by or around children.


It is the owner/operator's responsibility to comply with all applicable federal, state, and local laws, rules, and regulations regarding the ownership, operation, and transporting your equipment.



Operators should become thoroughly familiar with and comply with these applicable laws for operating and transporting equipment.


 **WARNING!** Clean sawdust from all guards, vents, control boxes, or any area where sawdust may gather **after every shift**. Failure to do so may result in fire, causing death or serious injury.

1.3 Installation and Maintenance


 **DANGER!** On electric mills, hazardous voltage inside the disconnect box, starter box, and at the electric motor can cause shock, burns, or death. Disconnect and lock out power supply before performing debarker installation! Follow all applicable electrical codes.

Make sure all electrical installation, service and/or maintenance work is performed by a qualified electrician and is in accordance with applicable electrical codes.

Before performing any service to this equipment, turn the key to the OFF position, remove the key, and disconnect the sawmill battery ground terminal.

 **WARNING!** Before replacing the debarker blade, move the sawmill blade guide arm in front of the sawmill blade to cover the blade teeth.

1.4 Operation and Towing

 **DANGER!** Make sure all guards and covers are in place and secured before operating the debarker option.

Keep all persons out of the path of moving equipment when operating the debarker.

Always remove the key from the control panel before preparing the debarker for towing.

 **WARNING!** Debarker is ON when warning light. **DO NOT** disconnect the warning light.

If the debarker continues to run with the key switch in the OFF position, remove the negative battery terminal from the battery post.

DO NOT continue to operate the mill if the main key switch does not control debarker operation. Doing so could result in serious injury. Call Wood-Mizer customer service for more information.

SECTION 2 ALIGNMENT

! DANGER! Before performing any service to this equipment, turn the key to the OFF (0) position and remove the key. Failure to do so will result in serious injury or death.

NOTICE! The debarker blade must swing parallel to the sawmill blade and be aligned vertically with the sawmill blade to insure proper operation.

2.1 Level the in/out swing

1. Turn the key to ACC (3) and use the debarker in/out switch to move the debarker all the way **outward**.
2. Turn the key to OFF (0) and remove the key to prevent the debarker from being turned on while performing alignment procedures.
3. Clip the blade guide alignment tool (or an appropriate straight edge) to the sawmill blade.

NOTICE! Make sure the tool lies flat on the blade and does not contact a tooth that could cause it to angle.

4. Mark the position of the debarker blade in relationship to the bottom of the blade guide alignment tool. (Measurement A in FIG. 2-1.)
5. Turn the key to ACC (3) and use the debarker in/out switch to move the debarker all the way **inward**.
6. Turn the key to OFF (0) and remove the key to prevent the debarker from being turned on while performing alignment procedures.
7. Mark the position of the debarker blade in relationship to the bottom of the blade guide alignment tool. (Measurement B in FIG. 2-1.)

The debarker blade should be the same distance from the sawmill blade during the entire swing of the debarker.

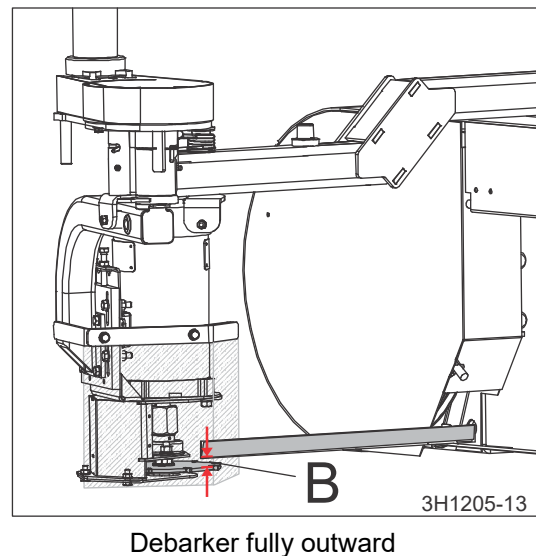
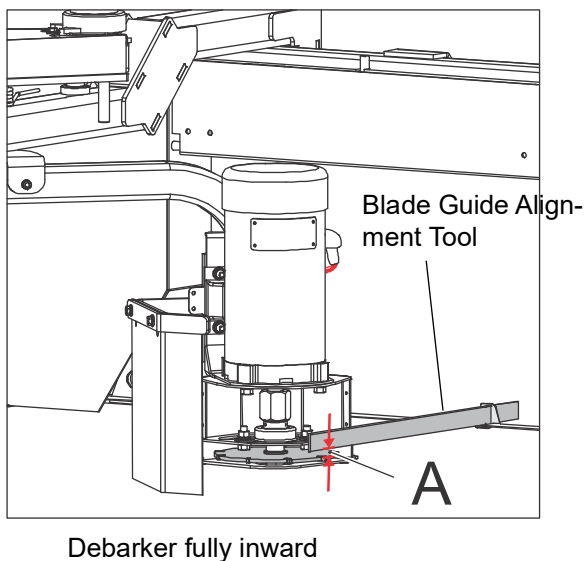
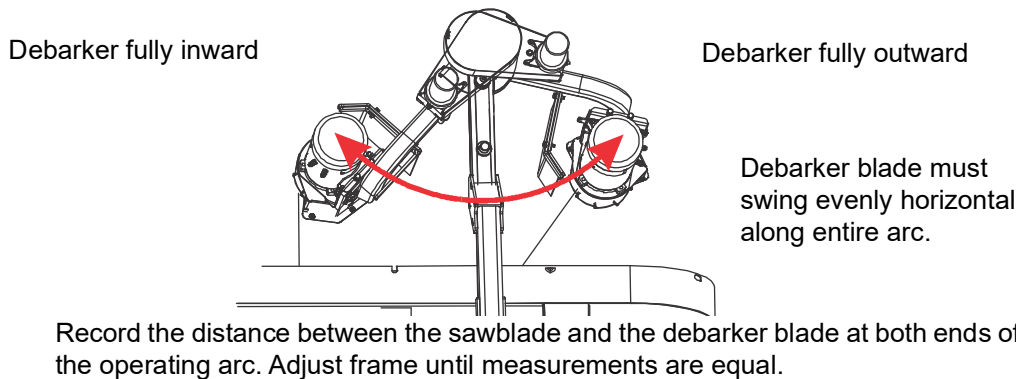


FIG. 2-1

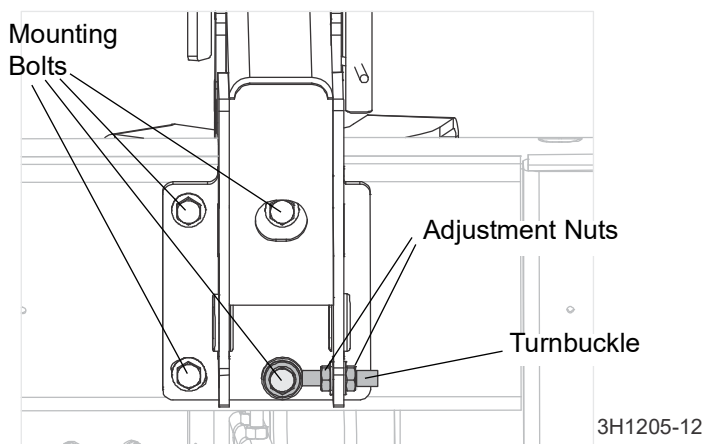
8. Use the turnbuckle on the frame arm mount to adjust the debarker until it is square with the sawmill.

9. **Lightly** loosen the four mounting bolts for the framing arm.

2 Alignment

Adjust the blade height

10. Loosen one of the turnbuckle adjustment nuts while tightening the other to move the turnbuckle in the desired direction.



3H1205-12

FIG. 2-2

2.2 Adjust the blade height

1. Clip the blade guide alignment tool (or an appropriate straight edge) to the sawmill blade. (Refer to Figure 2-3.)

NOTICE! Make sure the tool lies flat on the blade and does not contact a tooth that could cause it to angle.

2. Check the height of the debarker blade against the alignment tool.

The bottom edge of the tool should align with the center of the debarker blade.

3. Loosen the four blade motor mount bolts.
4. Loosen the jam nut on the adjustment bolt.

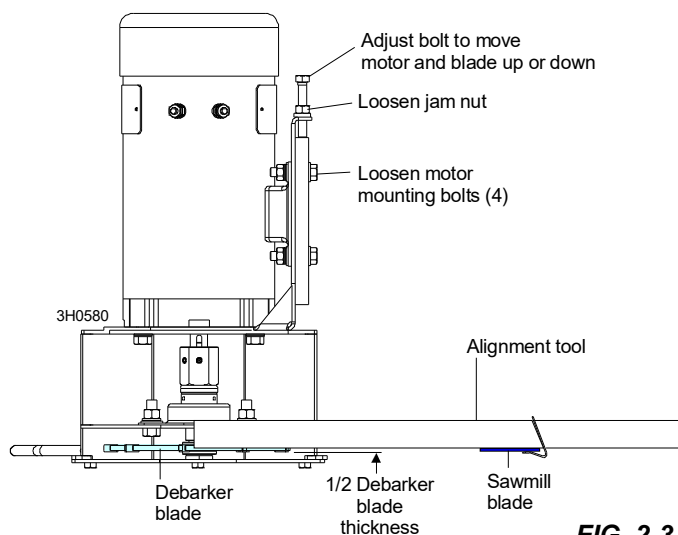


FIG. 2-3

5. Turn the adjustment bolts as needed to raise or lower the motor/blade assembly.
6. Turn the appropriate adjustment bolt to level the blade.

NOTICE! Make sure the blade is level.

7. Retighten the adjustment bolt jam nut and four motor mount bolts.
8. Turn the key to ACC (3) and use the debarker in/out switch to move the debarker all the way **outward**.
9. Turn the key to OFF (0) and remove the key to prevent the debarker from being turned on while performing alignment procedures
10. Move the blade guide alignment tool on the sawmill blade and recheck the position of the debarker blade against the tool.
11. If the debarker blade is not centered with the tool, the debarker is not swinging level. Repeat the 2.1 [Level the in/out swing](#) procedure.

SECTION 3 OPERATION AND MAINTENANCE

3.1 Travel Lock Pin

The debarker is equipped with a travel lock pin. Insert the lock pin to lock the debarker in place when towing the sawmill. Remove the lock pin to unlock the debarker while the debarking is required during sawing.

1. **Before operating the debarker**, make sure the lock pin is secured in its travel position. Turn the key switch to OFF (0) and remove the key. Pull the debarker out to relieve pressure on the lock pin. Remove the lock pin.
2. **Before towing the sawmill**, lock the debarker in the travel position. Turn the key switch to ACC (3) and use the debarker in/out switch to move the debarker all the way in. Turn the key to OFF (0) and remove the key. Push the debarker in until the travel position holes align. Insert the lock pin.
3. **To move the debarker out of the way during sawing**, turn the key switch to ACC (3) and use the debarker in/out switch to move the debarker all the way out.

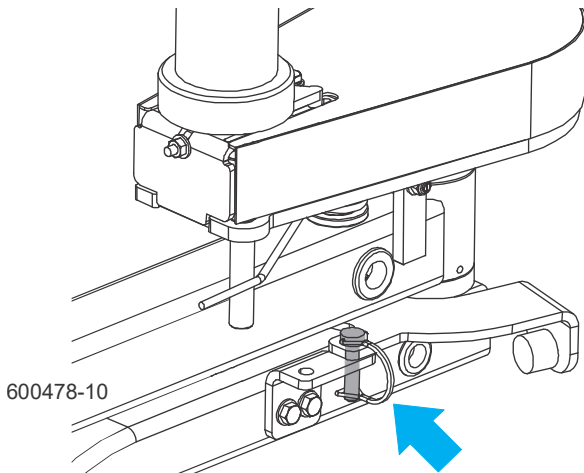


FIG. 3-1

3.2 Control Overview

The Debarker Option allows removal of bark from logs ahead of the bandsaw blade. This prevents the bandsaw blade from contacting dirt, sand, or other debris in the bark that can dull the blade.

The debarker control includes two toggle switches, an indicator light, and circuit breakers with manual reset.

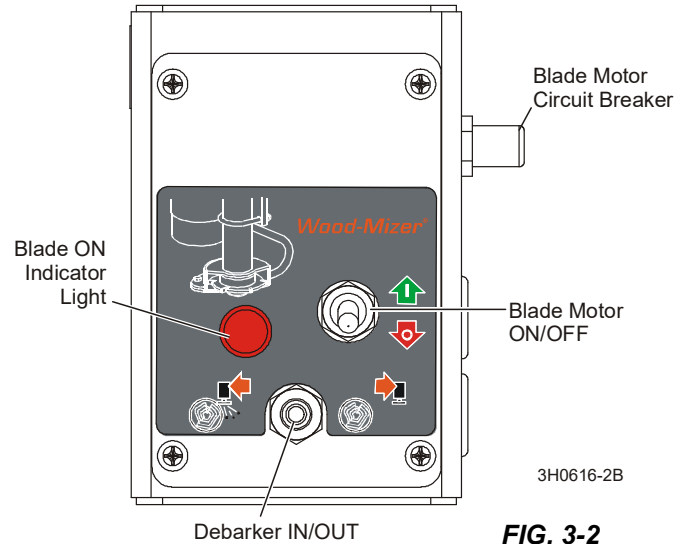


FIG. 3-2

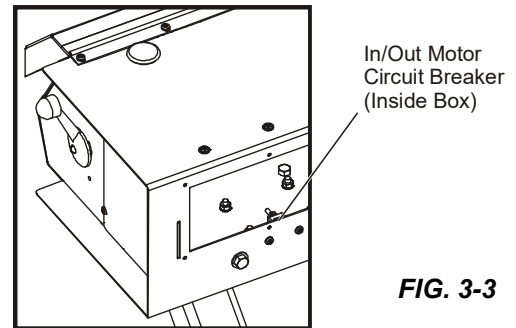


FIG. 3-3

- The Debarker IN/OUT toggle switch controls the debarker in/out motor to move the debarker cutting head toward or away from the log. The sawmill key switch must be on before the in/out function can be performed.

NOTE: The distance between the debarker blade and the side support with the cutting head all the way in is 6" (150mm) for the sawmill equipped with the standard head and 12" (300mm) for the sawmill equipped with the wide head.

- The Blade Motor ON/OFF toggle switch turns the blade motor on to start the debarker blade. The sawmill key switch must be on and the sawmill power feed drum switch must be activated in the forward direction before the blade motor can be turned on.
- The Blade ON indicator light comes on whenever the debarker blade motor is on.
- The blade motor circuit breaker can be reset by pushing the boot-covered tab on the side of the control box.

3.3 Operation

! DANGER! Make sure all guards and covers are in place and secured before operating the debarker option. Failure to do so may result in serious injury.

! DANGER! Keep all persons out of the path of moving equipment when operating the debarker. Failure to do so will result in serious injury.

1. Remove the blade motor cover before operating the debarker.
2. Make sure the warning light is on when the debarker is turned on.

! WARNING! Debarker is ON when warning light is on. **DO NOT** disconnect the warning light. Doing so may result in serious injury.

3. Use the in/out switch on the control box to pivot the debarker all the way out.



4. Move the sawmill carriage forward and pivot the debarker in until the front fence engages with the end/side of the log.

5. Turn the debarker on/off switch to ON (1).



6. Proceed with cutting. The actuator will keep the debarker against the side of the log. Depending on log shape, you may have to pivot the debarker in and out for smooth cutting.

NOTE: The debarker can continuously remove up to approximately 1" of material from the log; no motor cool down time is required. Slower feed rates may be required for optimal debarker operation.

7. Once the carriage is past the end of the log, pivot the debarker away from the log. Return the carriage.

NOTICE! Should the carriage be returned before the debarker has been pivoted out of the way of the log, the debarker is designed to pivot upwards. If this happens, continue to **SLOWLY** return the carriage; or stop, pivot the debarker out and then return the carriage. **DO NOT** move the carriage forward while the debarker is contacting the log without the blade spinning.

8. When done sawing and ready to store or transport the sawmill, replace the debarker blade motor cover.
9. Place the debarker in its travel position before towing the sawmill (*See Section 4.1*).

3.4 Maintenance

! DANGER! Before performing any service to this equipment, turn the key to the OFF (0) position and remove the key. Failure to do so will result in serious injury or death.

1. Lubricate the pivot joint with a NLGI #2 grade lithium grease every 40 hours of operation.

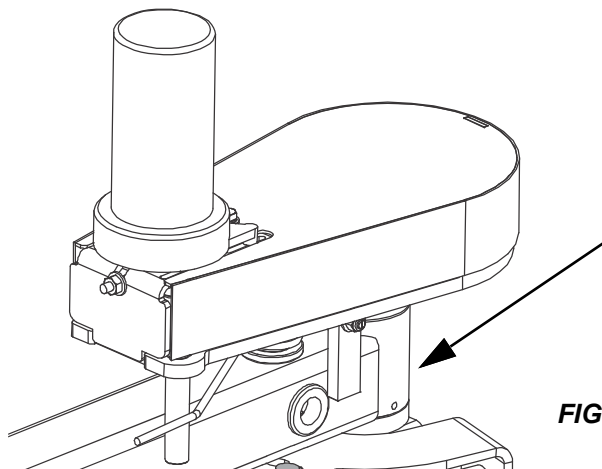


FIG. 3-4

2. Periodically check and/or adjust the guard up or down so the bottom is even with the bottom of the debarker blade. Replace the guard as needed.
3. Periodically check the debarker blade. Align or replace as needed.

! WARNING! Before replacing the debarker blade, move the sawmill blade guide arm in front of the sawmill blade to cover the blade teeth. Failure to do so may result in serious injury or death.

REPLACING BLADE

1. Remove the lower blade guard plate.
2. Place one wrench on the blade arbor, above the blade bearing.
3. Place the other wrench on the lower bolt and rotate clockwise (bolt has left-hand threads).
4. Remove the bolt and washer. Remove the blade and spacer.
5. Reinstall the spacer with the new blade.
6. Reinstall the bolt and washer and turn counterclockwise to tighten to 35 foot-pounds (±5).
7. Reinstall the blade guard plate.

! CAUTION! Tighten the blade bolt manually. Using power-assisted tools may result in over-torquing and damage to the bolt.

3.5 Troubleshooting



DANGER! Before performing any service to this equipment, turn the key to the OFF (0) position,

remove the key, and disconnect the sawmill battery ground terminal. Failure to do so will result in serious injury or death.

PROBLEM	CAUSE	SOLUTION
amp circuit breaker tripping	Wood or bark jammed in blade guard	Turn key to OFF position, remove key. Remove wood or bark from blade guard
	Pivot pin is binding.	Inspect for bind by moving debarker head to full in position. Turn key to OFF position, remove key. Pull arm to full out position by hand. If available, use a weight scale to pull arm to full out position. Should not have more than 12 pounds of resistance to pull out. Ensure pivot pin has been greased properly. Check pivot clamps for correct installation. Loosen pivot clamp bolts slightly, check for reduced binding
	Ring terminal of red wire touching debarker motor housing at motor	Move terminal away from motor housing. Reset circuit breaker and retest.
	Circuit breaker weak from repeated tripping.	Replace circuit breaker
Light comes on, but debarker motor and warning light do not operate	Blade binds in log; torsion spring too tight	Loosen the spring tensioning nut (part #10 in Section 4.6 Mount Arm Assembly) until the last few threads of the retainer bushing are engaged by the nylon in the nut.
	Circuit breaker tripped	Reset circuit breaker.
Debarker shuts off, but the circuit breaker is not tripped.	Bad ignition wire connection	Check ignition wire connection outside and inside of debarker control box.
	Intermittent key switch	Replace key switch
	Other loose wiring connection	Check wiring connections inside control box.
Debarker will not shut off.	Solenoid is stuck closed.	Replace solenoid.
IN/OUT Motor does not move IN or OUT	Drive belt too loose	Tighten enough to allow movement. DO NOT OVER-TIGHTEN.
	Switch not working properly	Check wiring to switch for loose connections. If wiring looks OK, replace switch.
Blade binds in log; breaker trips	Torsion spring too tight; Debarker hits log too hard	Loosen the spring tensioning nut (part #10 in Section 4.6 Mount Arm Assembly) until the last few threads of the retainer bushing are engaged by the nylon in the nut.

SECTION 4 REPLACEMENT PARTS

4.1 How To Use The Parts List

- Use the table of contents to locate the assembly that contains the part you need.
- Go to the appropriate section and locate the part in the illustration.
- Use the number pointing to the part to locate the correct part number and description in the table.
- Parts shown indented under another part are included with that part.

To Order Parts

- From the continental US, call **1-800-525-8100** to order parts. Have your customer number, vehicle identification number, and part numbers ready when you call.
- From other international locations, contact the Wood-Mizer distributor in your area for parts.

4.2 Sample Assembly



REF	PART #	DESCRIPTION	COMMENTS	QTY.
	012345	SAMPLE ASSEMBLY, COMPLETE	INCLUDES ITEMS 1-6	1
1	F02222-22	Sample Part		1
2	F03333-33	Sample Part		2
	098765	Sample Subassembly	Includes items 3-6	1
3	S04444-44	Subassembly Sample Part		1
4	K55555	Subassembly Sample Part		1
	054321	Sample Sub-Subassembly	Includes items 5-6	2
5	022222	Sub-Subassembly Sample Part		1
6	F10234-56	Sub-Subassembly Sample Part		1

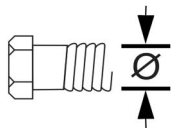
The Sample Assembly, Complete, part number 02345 (top level assembly) includes two parts (F0222-22 and F0333-33) and the 098765 subassembly.

Subassembly 098765 contains two parts(S04444-44 and K55555) and two copies of sub-subassembly 054321.

Each sub-subassembly 054321 contains two parts (022222 and F10234-56).

4.3 Torque Values

Grade		Units	SAE 5	SAE 8
Grade Mark				
Bolt Dia.	Threads. Per In.	Units	SAE 5	SAE 8
6	32	in-lbs (Nm)	20 (2.3)	-
8	32	in-lbs (Nm)	24 (2.7)	30 (3.4)
10	24	in-lbs (Nm)	35 (4.0)	45 (5.1)
10	32	in-lbs (Nm)	40 (4.5)	50 (5.7)
12	24	in-lbs (Nm)	50 (5.7)	65 (7.3)
1/4	20	in-lbs (Nm)	95 (10.7)	125 (14.1)
1/4	28	in-lbs (Nm)	95 (10.7)	150 (17.0)
5/16	18	ft-lbs (Nm)	17 (22.6)	23 (31.2)
5/16	24	ft-lbs (Nm)	20 (27.1)	25 (33.8)
3/8	16	ft-lbs (Nm)	30 (40.7)	40 (54.2)
3/8	24	ft-lbs (Nm)	35 (47.5)	45 (61.0)
7/16	14	ft-lbs (Nm)	50 (67.8)	65 (88.1)
7/16	20	ft-lbs (Nm)	55 (74.6)	70 (94.9)
1/2	13	ft-lbs (Nm)	75 (101.7)	100 (135.6)
1/2	20	ft-lbs (Nm)	85 (115.3)	110 (149.2)
9/16	12	ft-lbs (Nm)	105 (142.4)	135 (183.1)
9/16	18	ft-lbs (Nm)	115 (155.9)	150 (203.4)
5/8	11	ft-lbs (Nm)	150 (203.4)	195 (264.4)
5/8	18	ft-lbs (Nm)	160 (217.0)	210 (284.8)
3/4	10	ft-lbs (Nm)	170 (230.5)	220 (298.3)
3/4	16	ft-lbs (Nm)	175 (237.3)	225 (305.1)
7/8	9	ft-lbs (Nm)	302 (409.5)	473 (640.9)
7/8	14	ft-lbs (Nm)	300 (406.8)	400 (542.4)
1	8	ft-lbs (Nm)	466 (631.8)	714 (967.4)



Metric Bolt Head Identification



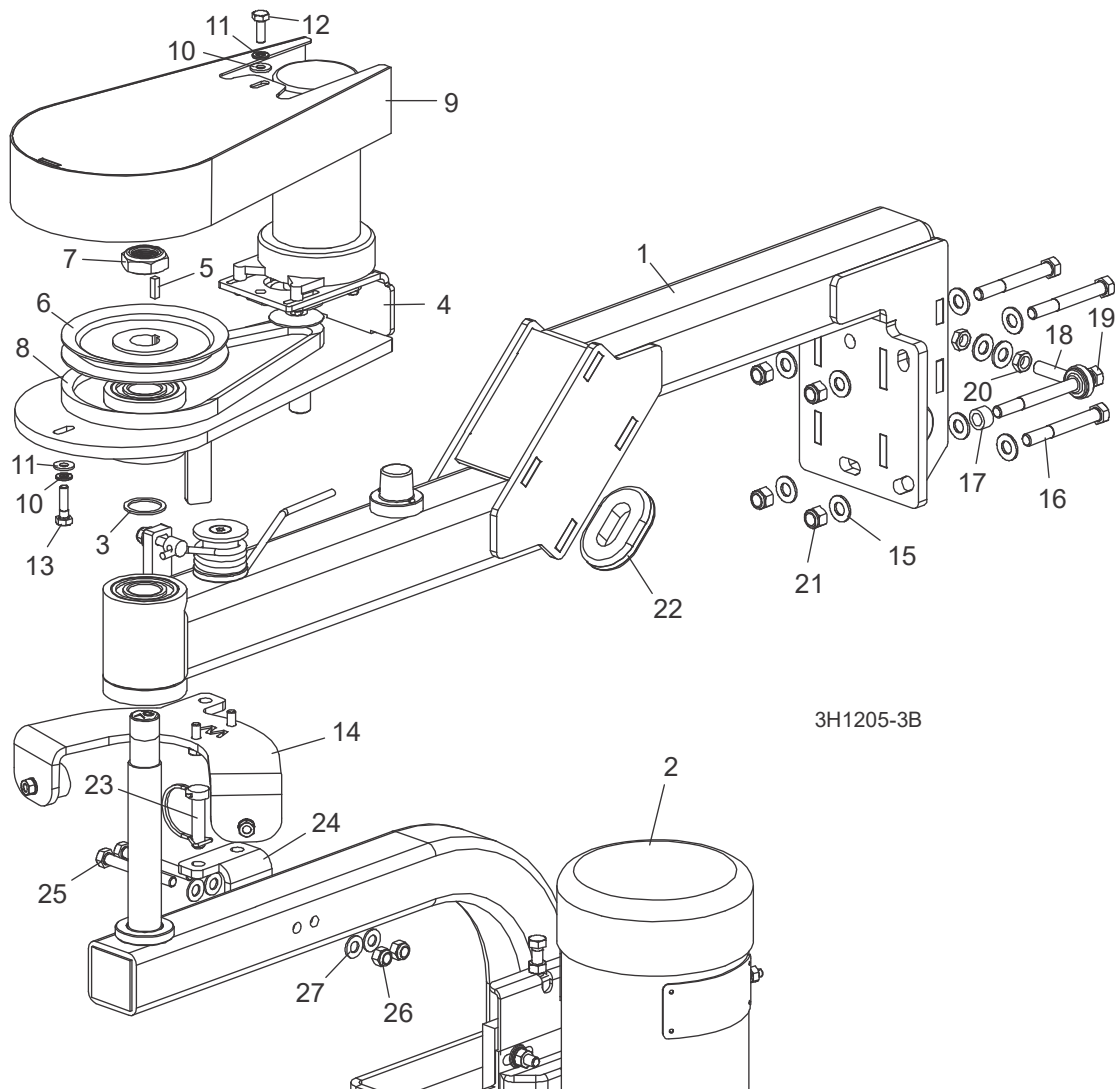
Metric Grade 8.8



Metric Grade 10.9

COARSE THREAD					FINE THREAD				Wrench Size	
Diameter & Thread Pitch	Metric 8.8		Metric 10.9		Diameter & Thread Pitch	Metric 8.8		Metric 10.9		
	N-m	lbs-ft	N-m	lbs-ft		N-m	lbs-ft	N-m		lbs-ft
6 x 1.0	8	6	11	8					10 mm	
8 x 1.25	20	15	27	20	8 x 1.0	21	16	29	22	13 mm
10 x 1.5	39	29	54	40	10 x 1.25	41	30	57	42	16 mm
12 x 1.75	68	50	94	70	12 x 1.25	75	55	103	76	18 mm
14 x 2.0	109	80	151	111	14 x 1.5	118	87	163	120	21 mm
16 x 2.0	169	125	234	173	16 x 1.5	181	133	250	184	24 mm
18 x 2.5	234	172	323	239	18 x 1.5	263	194	363	268	27 mm
20 x 2.5	330	244	457	337	20 x 1.5	367	270	507	374	30 mm
22 x 2.5	451	332	623	460	22 x 1.5	495	365	684	505	34 mm
24 x 3.0	571	421	790	583	24 x 2.0	623	459	861	635	36 mm
30 x 3.0	1175	867	1626	1199	30 x 2.0	1258	928	1740	1283	46 mm

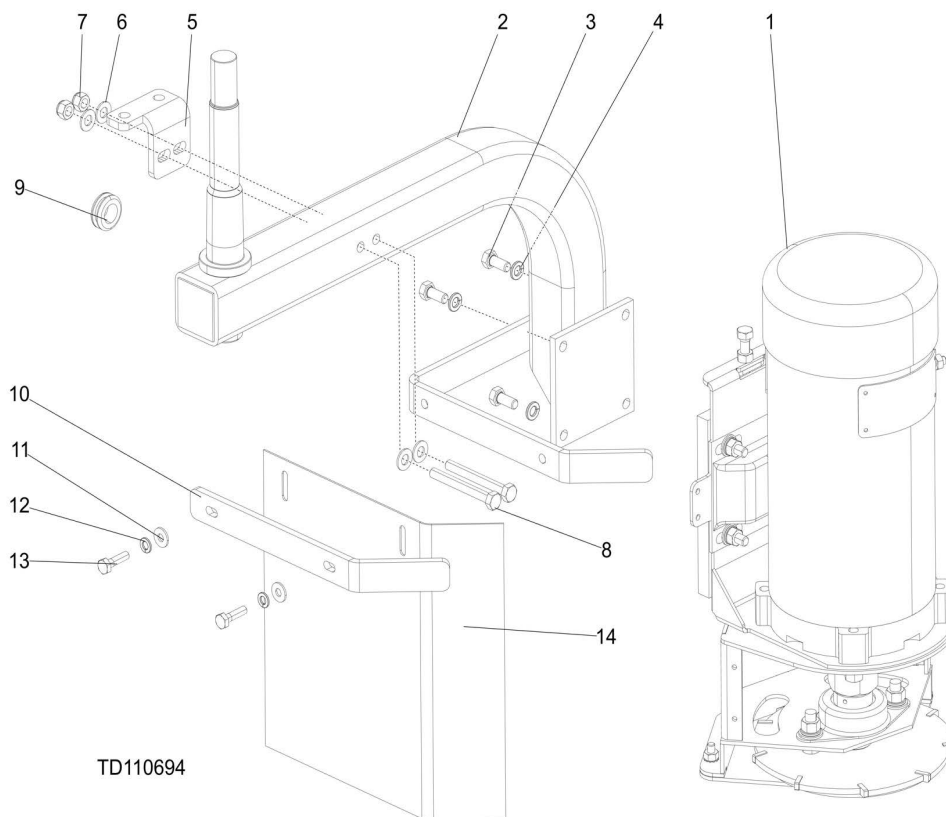
4.4 Mechanical Assembly



REF	PART #	DESCRIPTION	COMMENTS	QTY.
	110213	DEBARKER KIT, MKIII MECHANICAL ASSEMBLY	NOTE: For field installation on existing sawmills, order kit 110212	1
	110695	Assembly, LT40 Mechanical Debarker, MKIII		1
1	110693	Assembly, LT40 Debarker Arm()	(See Section 4.6)	1
2	110694	Assembly, LT40 Debarker Pivot Arm w/o Lock ()	See Section 6.2	1
3	076037	Shim, 1 ID 1-1/4 OD		1
4	110637	Assembly, LT40 Debarker Upper Pivot w/o Lock ()	(See Section 4.7)	1
5	065214	Key, 3/16 Sq x 5/8		1
6	076798	Pulley, 5x7/8 A Groove		1
7	F05010-238	Nut, 7/8-14 Half Nylock		1
8	076689	Belt, AX22		1
9	076713	Weldment, LT70 Debarker Belt Guard		1
10	F05011-11	Washer, 1/4 SAE Flat		2
11	F05011-14	Washer, 1/4 Split Lock		2
12	F05005-1	Bolt, 1/4-20x3/4 FT Hex HeadC		1

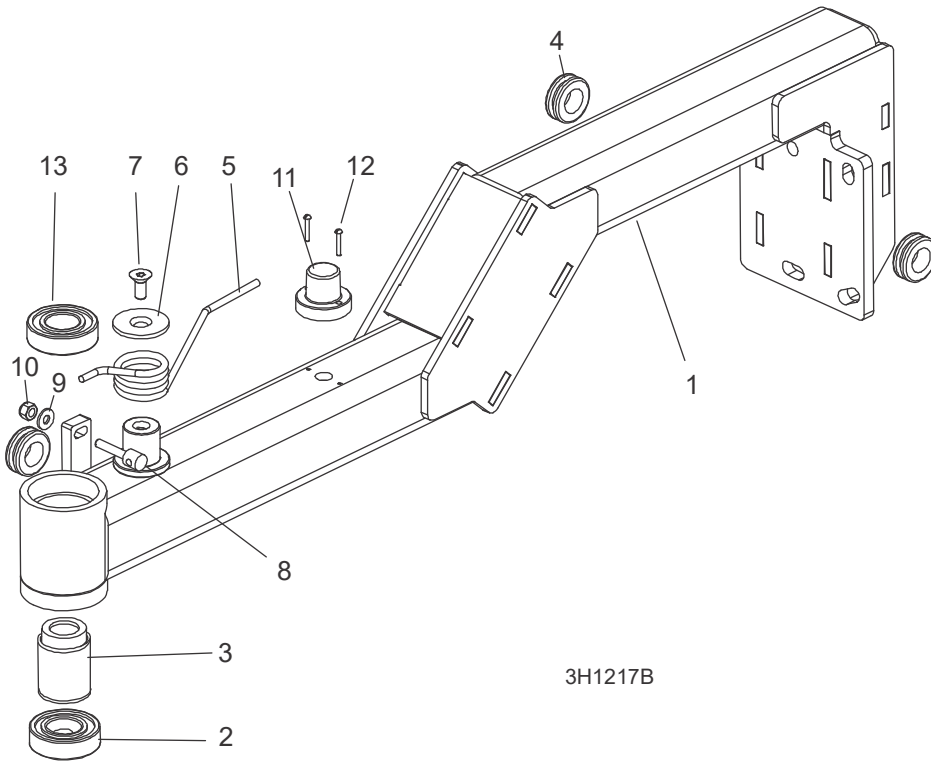
REF	PART #	DESCRIPTION	COMMENTS	QTY.
13	F05005-101	Bolt, 1/4-20 X 1 Hex Head Gr5		1
14	074879	Assembly, LT70 Wide Debarker Pivot Stop ()	(See Section 4.10)	1
15	F05011-3	Washer, 3/8 Flat SAE		10
16	F05007-73	Bolt, 3/8-16x3 Hex Head Gr5		3
17	055323	Spacer, .39x.625x.39		1
18	018739	Rod End, 3/8-24 Right Hand		1
19	F05007-126	Bolt, 3/8-16x4 Hex Head Gr5		1
20	F05010-22	Nut, 3/8-24 UNC Hex Jam		2
21	F05010-10	Nut, 3/8-16 Hex Nyl Lock		4
22	085613	Grommet, Rubber, 1 x 1 3/4 Oval		1
23	046412	Pin, 3/8x1 3/8 Round Wire Lock		1
24	110616	Lock Bracket, Debarker Travel		1
25	F05006-136	Bolt, 5/16-18x2 3/4 FT HH Gr5		2
26	F05010-58	Nut, 5/16-18 Nylok Hex		2
27	F05011-17	Washer, 5/16 SAE Flat		4
	073671	Wire Kit, MRK III Debarker Extension		1

4.5 Pivot Arm Assembly



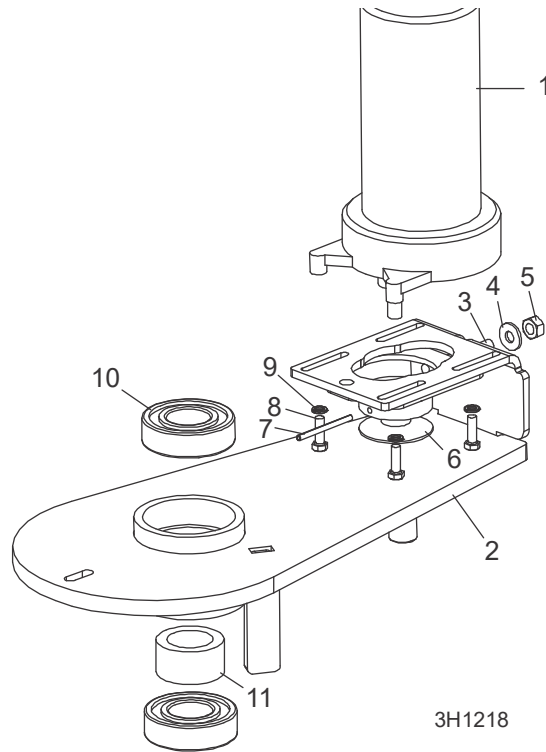
REF	PART #	DESCRIPTION	COMMENTS	QTY.
	110694	ASSEMBLY, LT40 DEBARKER PIVOT ARM, W/O LOCK		1
1	110431	Assy, LT40 MKIII Cutter Head	(See Section 4.8)	1
2	110685	Wldmnt, LT70 Debarcker Pivot Arm		1
3	F05006-5	Bolt, 5/16-18x3/4 HH Gr2		4
4	F05011-13	Washer, 5/16 Split Lock		4
5	110616	Lock Brkt, Debarcker Travel		1
6	F05011-17	Washer, 5/16 SAE Flat		4
7	F05010-58	Nut, 5/16-18 Nyl Lock		2
8	F05006-136	Bolt, 5/16-18x2 3/4 FT HH Gr5 Zinc		2
9	033475	Grommet, 5/8 ID 3/16 GW Rubber		1
10	076749	Plate, Debarcker Flex Guard Retaining		1
11	F05011-11	Washer, 1/4 SAE Flat		2
12	F05011-14	Washer, 1/4 Split Lock		2
13	F05005-38	Screw, 1/4-20x1 HHC		2
14	021232	Guard, Debarcker Flex		1

4.6 Mount Arm Assembly



REF	PART #	DESCRIPTION	COMMENTS	QTY.
	110693	ASSY, LT40 DEBARKER ARM		1
1	110692	Wldmnt, LT40 Debarker Mount Arm		1
2	036007	Bearing, R20-2RS		1
3	110588	Tube, Long Bearing Spacer		1
4	025247	Grommet, Rubber 3/4 ID		3
5	098605	Spring, Debarker Torsion		1
6	076039	Washer, LT35 Torsion Spring		1
7	F05006-95	Bolt, 5/16-18x3/4 FHS Zinc		1
8	076139	Bushing, Debarker Spring Retaining		1
9	F05011-11	Washer, 1/4 SAE Flat		1
10	F05010-69	Nut, 1/4-20 Nylock		1
11	073555	Lamp, 180 Degree Amber Strobe		1
12	F05004-13	Bolt, #4-40x3/4 SI		2
13	087353	Bearing, SKF 6205 2RS Roller		1

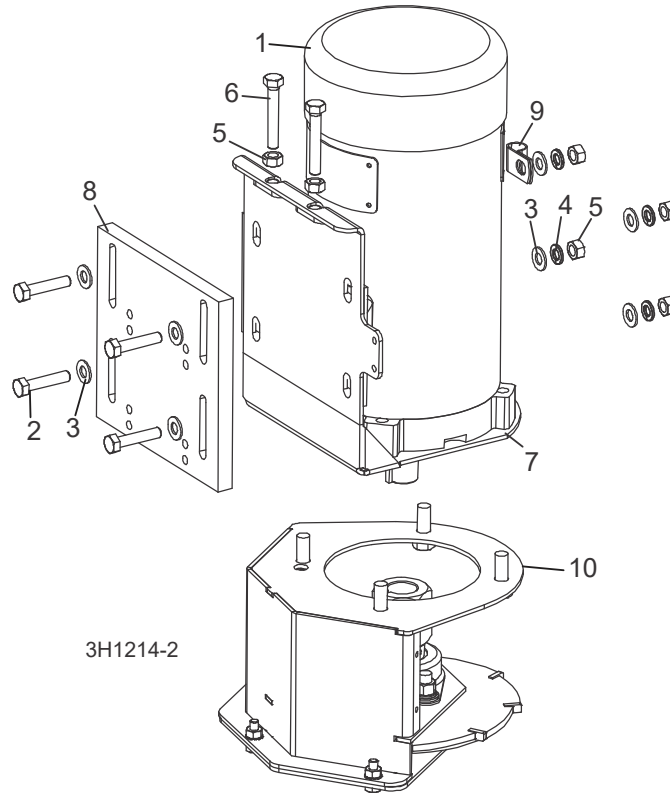
4.7 In/Out Motor Drive Assembly



3H1218

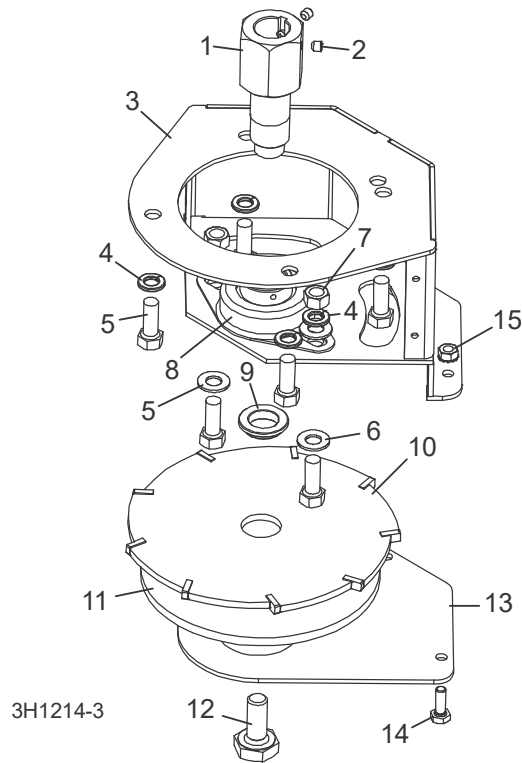
REF	PART #	DESCRIPTION	COMMENTS	QTY.
	110637	PIVOT ASSEMBLY, LT40 DEBARKER UPPER W/O LOCK		1
1	128026	Motor Assy, Debarker In/Out w/Brake		1
	009695	Shaft Kit, 53:1 ASA Gear Motor	Service kit for 128026	1
	110952	Motor, 1/15HP 34RPM 12VDC 98:1 W/Brake		1
	133750	Brake Kit, Gear Motor K01134-APAH		1
	133751	Gear Kit, Gear Motor K01134-APAG		1
2	110635	Pivot Weldment, LT70 Debarker Upper w/o Lock		1
3	023637	Tensioner Weldment, Gear Motor		1
4	F05011-11	Washer, 1/4" SAE Flat		1
5	F05010-21	Nut, 1/4-20 Swaged		1
6	076666	Sheave, LT70 Debarker Gearmotor		1
7	F05012-102	Pin, 1/8 x 1 5/8 Roll		1
8	F05004-152	Screw, 10-32 x 5/8 HH Machine		4
9	F05011-20	Washer, #10 Split Lock		4
10	087353	Bearing, SKF 6205 2RS Roller		2
11	076741	Tube, Short Bearing Spacer		1

4.8 Blade Motor Assembly



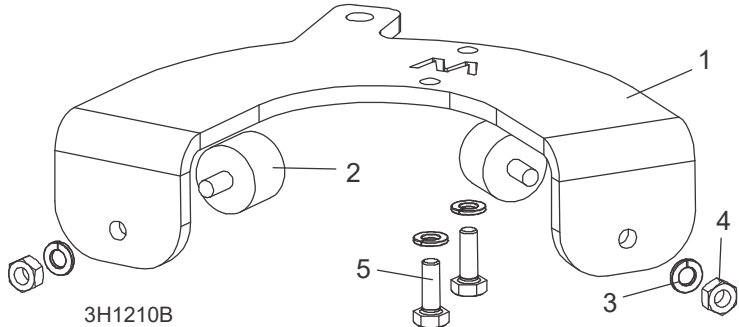
REF	PART #	DESCRIPTION	COMMENTS	QTY.
	110431	HEAD ASSEMBLY, LT70 DEBARKER CUTTER		1
1	023688	Motor, 3/4HP 12VDC TEFC Electric	7/8" Dia. Shaft	1
	024167	Brush Kit, Leeson 3/4HP Motor	Includes 2 Brushes and 2 Springs	1
	016087	Fan, 3/4 HP Leeson Motor Replacement		1
	047998	Guard, Motor Fan		1
	016108	Key, 3/16" Square x 1 3/8" Long		1
2	F05006-2	Bolt, 5/16-18 x 1 1/2" Hex Head Full Thread		4
3	F05011-17	Washer, 5/16" SAE Flat		8
4	F05011-13	Washer, 5/16" Split Lock		4
5	F05010-17	Nut, 5/16-18 Hex		6
6	F05006-13	Bolt, 5/16-18 x 2" Hex Head Full Thread		2
7	023622	Bracket Weldment, Debarker Blade Motor Adjustable		1
8	023620	Plate, Debarker Blade Motor Mount		1
9	P07584	Clamp, 1/2EMT Coated		1
	024431	Decal, Disconnect Motor Leads Warning		1
10	N/A	Blade/Mandrel Parts	<i>(See Section 4.9)</i>	1

4.9 Blade Housing Assembly



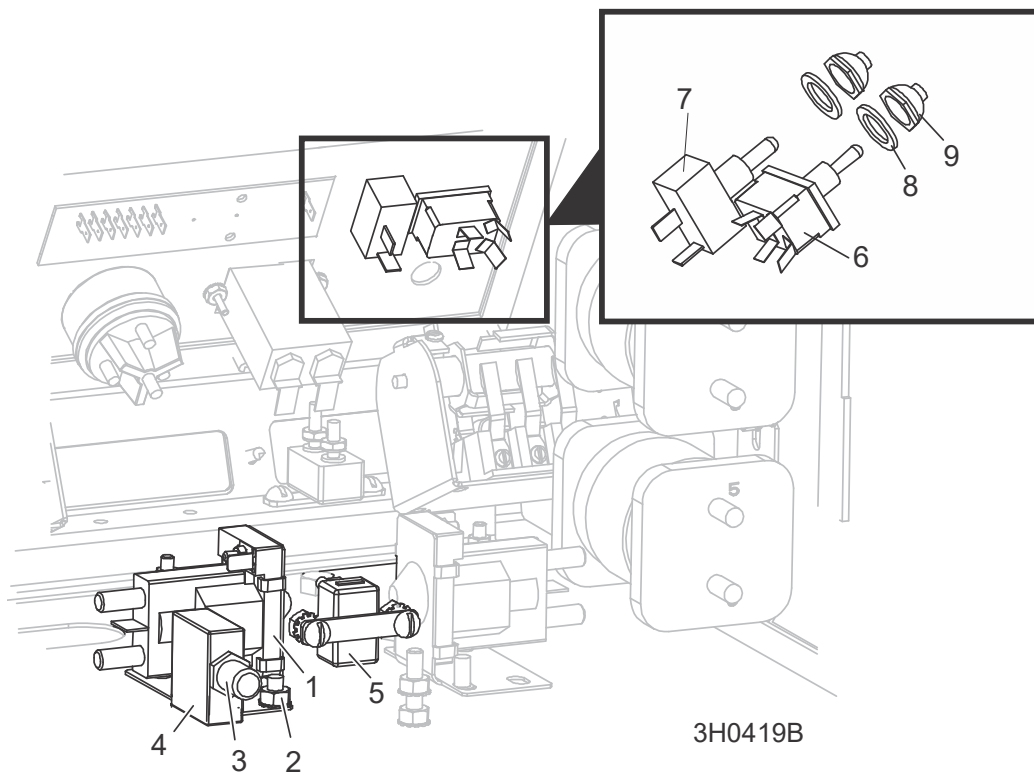
REF	PART #	DESCRIPTION	COMMENTS	QTY.
1	074832	Mandrel, Debarker Blade		1
2	F05005-105	Screw, 1/4-28 x 1/4" Cup Point Socket Set		2
3	076686	Head Weldment, LT70 Debarker Cutter		1
4	F05011-4	Washer, 3/8" Split Lock		6
5	F05007-7	Bolt, 3/8-16 x 1" Hex head		6
6	F05011-3	Washer, 3/8" SAE Flat		4
7	F05010-1	Nut, 3/8-16 Hex		2
8	023541	Bearing, 1" Flanged Mount		1
9	023632	Bushing, Debarker Blade Spacer		1
10	021236	Blade, Debarker 7" Dia.		1
	065852	Blade, Debarker 7" Dia. w/1/2" Inserts	(Optional - Sold Separately)	1
11	110303	Gauge, MKIII Debarker Depth		1
12	074833	Bolt, 1/2-20 x 1 1/4" hex Head Special		1
13	023629	Plate, Debarker Blade Housing Bottom		1
14	F05005-1	Bolt, 1/4-20 x 3/4" hex Head Full Thread		3
15	F05010-9	Nut, 1/4-20 Self-Locking Hex		3
	076799	Decal, Debarker Light Warning		1

4.10 Pivot Stop Assembly



REF	PART #	DESCRIPTION	COMMENTS	QTY.
	074879	STOP ASSEMBLY, LT70 WIDE DEBARKER PIVOT		1
1	076683	Plate, LT70 Wide Debarker Pivot Stop		1
2	065717	Bumper, 1x3/4 Hard Silicone Rubber		2
3	F05011-14	Washer, 1/4 Split Lock		4
4	F05010-63	Nut, 1/4-20 Free Hex		2
5	F05005-123	Bolt, 1/4-20x3/4 Hex Head Gr5		2

4.11 Debarker Control Assembly



REF	PART #	DESCRIPTION	COMMENTS	QTY.
	024220	CONTROL ASSEMBLY, DEBARKER		1
	023676	CONTROL ASSEMBLY, DEBARKER (NON-REMOTE)		1
	023677	CONTROL ASSEMBLY, DEBARKER (REMOTE)		1
1	016372	Solenoid Kit, Accessory		1
	P10449	Solenoid, 100A 12V Cont. Duty GND	Available in assemblies only.	1
	015426	Diode Assembly, Solenoid Coil Chassis GND		1
2	F05010-9	Nut, 1/4-20 Self Locking		2
3	021253	Boot, Circuit Breaker		1
4	015527	Breaker, 70 Amp Manual Reset Panel Mount		1
5	E20430	Breaker, 15 Amp Manual Reset		1
6	024200	Switch, DPDT Toggle Return Center Screw Terminal		1
	P10006 ¹	Switch, DPDT Toggle		1
7	P03027	Switch, SPST Toggle Quick Connect		1
8	P05251-1	Washer, 1/2 x 3/4 x 1/16" Nylon		2
9	P02575	Boot, Toggle Switch		2