

Wood-Mizer[®] Sawmill

Parts Manual

LX250

rev. A1.01- A2.00



Safety is our #1 concern! Read and understand all safety information and instructions before operating, setting up or maintaining this machine.

Form #2372

California
Proposition 65 Warning



WARNING: Breathing gas/diesel engine exhaust exposes you to chemicals known to the State of California to cause cancer and birth defects or other reproductive harm.

Always start and operate the engine in a well-ventilated area.
If in an enclosed area, vent the exhaust to the outside.
Do not modify or tamper with the exhaust system.
Do not idle the engine except as necessary.

For more information go to **www.P65warnings.ca.gov**.



WARNING: Drilling, sawing, sanding or machining wood products can expose you to wood dust, a substance known to the State of California to cause cancer. Avoid inhaling wood dust or use a dust mask or other safeguards for personal protection.

For more information go to **www.P65Warnings.ca.gov/wood**.

Active Patents assigned to Wood-Mizer, LLC

Wood-Mizer, LLC has received patents that protect our inventions which are a result of a dedication to research, innovation, development, and design. Learn more at: woodmizer.com/patents

©2020 Wood-Mizer LLC

Printed in the United States of America, all rights reserved. No part of this manual may be reproduced in any form by any photographic, electronic, mechanical or other means or used in any information storage and retrieval system without written permission from

Wood-Mizer, LLC
8180 West 10th Street
Indianapolis, Indiana 46214

GENERAL INFORMATION

1.1 How To Use The Parts List1-1
 1.2 Sample Assembly1-1

BLADE GUIDE ROLLERS & ARM

2.1 Blade Guide Arm Assembly.....2-1
 2.2 Blade Guide Arm Drive Assembly.....2-3
 2.3 Blade Guide Assembly, Drive Side.....2-5

BLADE WHEELS & TENSIONER

3.1 Blade Drive Assembly3-1
 3.2 Idle Blade Wheel Assembly3-2
 3.3 Blade Tensioner Assembly.....3-4

SAW HEAD FRAME

4.1 Water Lube Assembly4-1
 4.2 Clutch Assembly4-3
 4.3 Brake Assembly.....4-5
 4.4 Saw Head Decals.....4-7
 4.5 Blade Housing Covers & Saw Head Hardware.....4-8

CONTROL & BATTERY BOXES

5.1 Control Box Assembly5-1
 5.2 Control Box Mount & Up/Down Limit Switches5-3
 5.3 Circuit Breakers.....5-5
 5.4 Front Panel Assembly & Harnesses (G25/G38).....5-6
 5.5 Simple Set Control (LX150/250, SSW-150-A).....5-7
 5.6 Sensor Assembly5-9
 5.7 Fuse Box.....5-11
 5.8 Battery Box Assembly.....5-12

UP/DOWN SYSTEM

6.1 Mast Pad & Hardware6-1
 6.2 Blade Height Scales & Mast Angles6-3
 6.3 Up/Down Assembly, Drive Side6-4
 6.4 Up/Down Assembly, Idle Side.....6-6
 6.5 Up/Down Gearbox Assembly.....6-7
 6.6 Head Mounting Assembly.....6-9

FEED SYSTEM & TRACK ROLLERS

7.1 Track Rollers and Wipers (Drive Side).....7-1
 7.2 Track Roller And Wipers (Idle Side)7-3

Table of Contents

Section-Page

7.3 Power Feed Assembly7-5
7.4 Power Feed Assembly7-7

BED FRAME ASSEMBLY

8.1 Bed Frame Assembly8-1
8.2 Bed Section Assembly.....8-2
8.3 Bed Stop Assembly, Right8-4
8.4 Bed Stop Assembly, Rear Left8-5

MISCELLANEOUS

9.1 Replacement Manuals9-1

INDEX

I

SECTION 1 GENERAL INFORMATION

1.1 How To Use The Parts List

- Use the table of contents or index to locate the assembly that contains the part you need.
- Go to the appropriate section and locate the part in the illustration.
- Use the number pointing to the part to locate the correct part number and description in the table.
- Parts shown indented under another part are included with that part.
- Parts marked with a diamond (◆) are only available in the assembly listed above the part.

See the sample table below. Sample Part #A01111 includes part F02222-2 and subassembly A03333. Subassembly A03333 includes part S04444-4 and subassembly K05555. The diamond (◆) indicates that S04444-4 is not available except in subassembly A03333. Subassembly K05555 includes parts M06666 and F07777-77. The diamond (◆) indicates M06666 is not available except in subassembly K05555.

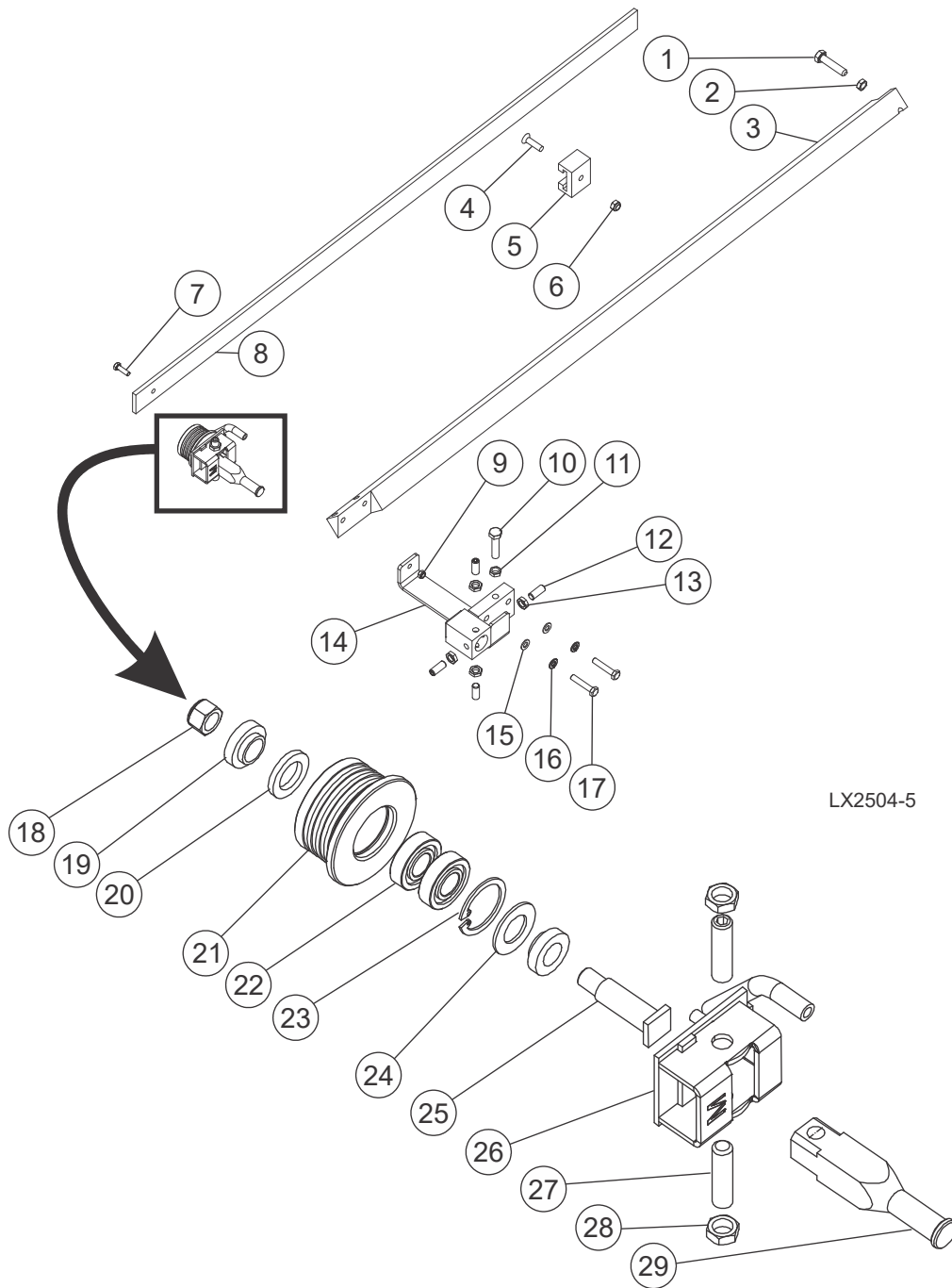
| 1.2 Sample Assembly | | | | |
|---------------------|--|-----------|------|---|
| REF | DESCRIPTION (◆ Indicates Parts Available In Assemblies Only) | PART # | QTY. | |
| | SAMPLE ASSEMBLY, COMPLETE (INCLUDES ALL INDENTED PARTS BELOW) | A01111 | 1 | |
| 1 | Sample Part | F02222-22 | 1 | |
| | Sample Subassembly (Includes All Indented Parts Below) | A03333 | 1 | |
| 2 | Sample Part (◆ Indicates Part Is Only Available With A03333) | S04444-4 | 1 | ◆ |
| | Sample Subassembly (Includes All Indented Parts Below) | K05555 | 1 | |
| 3 | Sample Part (◆ Indicates Part Is Only Available With K05555) | M06666 | 2 | ◆ |
| 4 | Sample Part | F07777-77 | 1 | |

To Order Parts:

- From the continental U.S., call **1-800-525-8100** to order parts. Have your customer number, vehicle identification number, and part numbers ready when you call.
- From other international locations, contact the Wood-Mizer distributor in your area for parts.

SECTION 2 BLADE GUIDE ROLLERS & ARM

2.1 Blade Guide Arm Assembly



Blade Guide Rollers & Arm

Blade Guide Arm Assembly

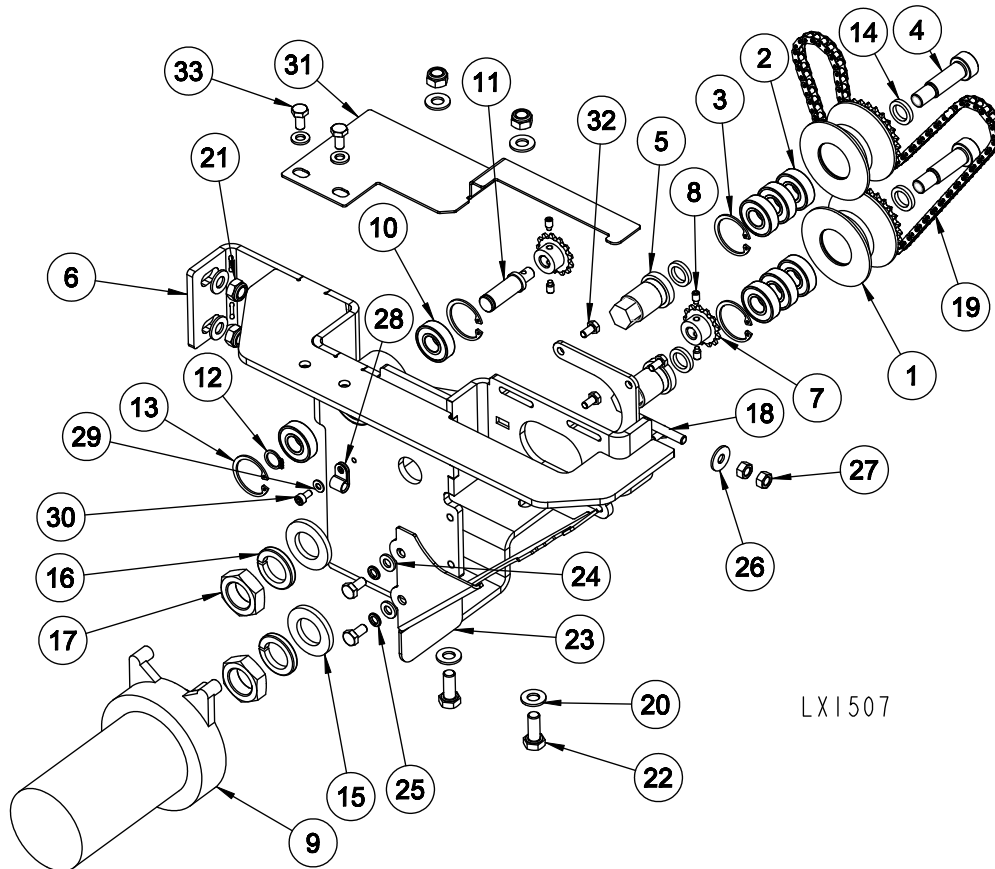
2

| REF | DESCRIPTION (♦ Indicates Parts Available in Assemblies Only) | PART # | QTY. |
|-----|--|------------|------|
| | ARM ASSY, LX BLADE GUIDE | 110926 | |
| 1 | Bolt, M10-1.5 x 45 HH 8.8 | F05022-44 | 2 |
| 2 | Nut, M10-1.5 Jam | F05027-18 | 2 |
| 3 | Bar, LX Blade Guide | 110927 | 1 |
| 4 | Screw, M8x1.25x30mm Flat Socket C/S BO | F05004-245 | 1 |
| 5 | Guide, Blade Guard LT15/LT70 | 014882 | 1 |
| 6 | Nut, M8-1.25 Hex Nylock | F05010-132 | 1 |
| 7 | Bolt, M6-1x20mm 8.8 Hex Head | F81001-2 | 1 |
| 8 | Guard, LX Blade | 110934 | 1 |
| 9 | Nut, M6-1.0 Nylon Lock | F05010-200 | 1 |
| 10 | Screw, M10-1x25mm Stainless Set, DIN 913 | F81015-4 | 4 |
| 11 | Nut, M10x1-04-ST-A2 ISO 8675 Thin | F81033-10 | 4 |
| 12 | Block Weldment, LX Blade Guide | 110929 | 1 |
| 13 | Washer, M8 Flat | F05026-4 | 2 |
| 14 | Washer, M8 Split Lock | F05011-45 | 2 |
| 15 | Bolt, M8-1.25x40 HH FT Zinc Class 8.8 | F81002-15 | 2 |
| 16 | Assy, Metric Idle Blade Guide | 130842 | 1 |
| 16 | Nut, M10-1.50 Hex Nyl Lock | F05004-270 | 1 |
| 17 | Spacer, .510x.937x.34 | S04253 | 2 |
| 18 | Washer, 5/8 Grey Felt | P06455 | 1 |
| 19 | Roller Assy, Blade Guide | A09678 | 1 |
| 19 | Roller, Blade Guide | S04250 | 1 |
| 20 | Bearing, R8-2RS Blade Guide | 015975 | 2 |
| 21 | Ring, 1 1/8 IR Tru-Ark | F04254-1 | 1 |
| 22 | Washer, 5/8 White Felt | P04252 | 1 |
| 23 | Shaft, M10-1.5 Metric Roller | 087763_US | 1 |
| 24 | Weldment, Metric Idle B/G Brkt | 130841 | 1 |
| 25 | Screw, M10-1.5x40mm SH Set, SS, Cup Pnt | F05022-57 | 2 |
| 26 | Nut, M10-1.5 Hex Fin Jam- DIN 439 B Zinc | F05010-203 | 2 |
| 27 | Shaft, Metric B/G Mount | 503588_US | 1 |

2 Blade Guide Rollers & Arm

Blade Guide Arm Drive Assembly

2.2 Blade Guide Arm Drive Assembly



| REF | DESCRIPTION (◆ Indicates Parts Available In Assemblies Only) | PART # | QTY. |
|-----|--|---------------|----------|
| | GUIDE ASSEMBLY, LX150 IN/OUT BLADE | 517270 | 1 |
| | Roller, Complete | 517269 | 2 |
| 1 | Roller, Sprocket | 517253-1 | 1 |
| 2 | Bearing, 6001 2RSR | 087893 | 3 |
| 3 | Ring, Retaining W28 | F81090-9 | 1 |
| 4 | Bolt, 12/m10x30 12.9 Iso7379 | F81003-70 | 2 |
| 5 | Bolt, Blade Guide | 517257-1 | 2 |
| 6 | Plate, Mount Complete | 517259-1 | 1 |
| | Sprocket Assembly, 25b13x.3130 | P09970 | 2 |
| 7 | Sprocket, 25b13x.3130 | P09970-2 | 1 |
| 8 | Screw, 10-24x1/4 Shbo Full Dog Pt Set | F05004-274 | 2 |
| 9 | Motor, Gear 1/30HP 62RPM 12VDC | P09698-1-CE | 1 |
| 10 | Bearing, 6001 2RSR | 087893 | 3 |
| 11 | Axle, Idle | 517260 | 1 |
| 12 | Ring, Spring Z 12 | F81090-14 | 1 |
| 13 | Ring, Retaining W28 | F81090-9 | 1 |

Blade Guide Rollers & Arm

Blade Guide Arm Drive Assembly

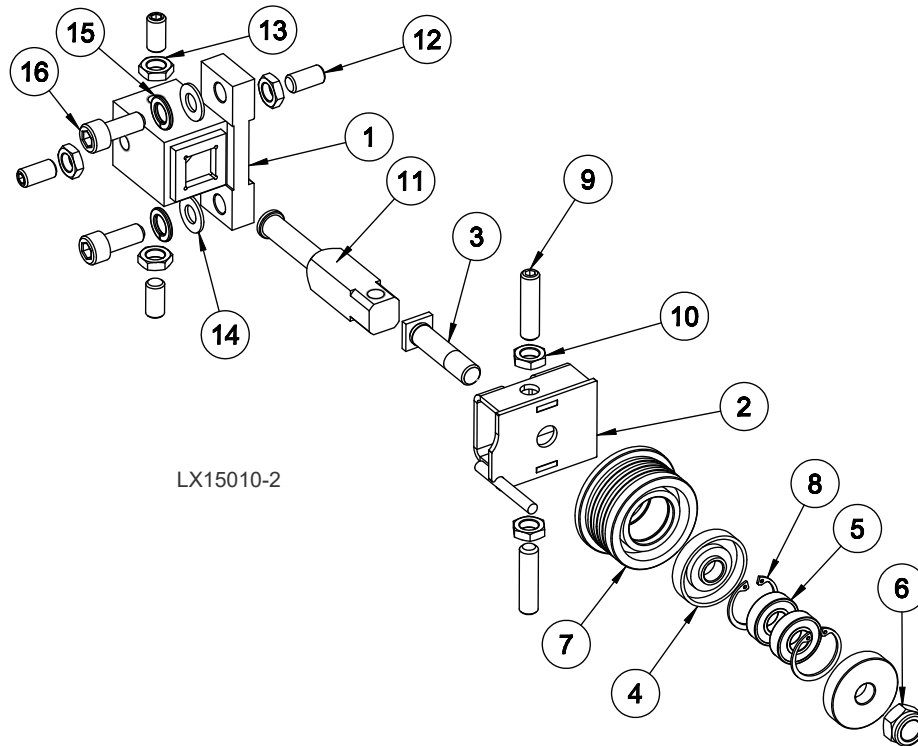
2

| | | | | |
|----|---|-----------|---|--|
| 14 | Washer, 12,3/18-3 | 517256 | 4 | |
| 15 | Washer, 21 Fe/zn5 Pn-78/m-82005 | F81059-2 | 2 | |
| 16 | Washer, Split Lock 20.5 Fe/zn5 Pn/m-82008 | F81059-1 | 2 | |
| 17 | Nut, M20x1.5 Hex Jam | F81037-7 | 2 | |
| 18 | Tensioner, Debarker Motor | 089969-1 | 1 | |
| 19 | Chain, Blade Guide - Lx100 | 517267 | 1 | |
| 20 | Washer, 8.4 Fe/zn5 Pn-78/m-82005 | F81054-1 | 6 | |
| 21 | Nut, M8-8-b Hex Nylon Zinc Lock | F81032-2 | 4 | |
| 22 | Bolt, M8x20 8.8 Fe/zn5 Pn-85/m-82105 | F81002-4 | 2 | |
| 23 | Cover, Chain | 517268-1 | 1 | |
| 24 | Washer, 6.4 Fe/zn5 Pn-78/m-82005 | F81053-1 | 4 | |
| 25 | Washer, Split Lock Z 6.1 | F81053-3 | 2 | |
| 26 | Washer, 6.5 Zinc Flat | F81053-11 | 1 | |
| 27 | Nut, M6 8 Fe/zn5 Pn-85/m-82144 | F81031-1 | 2 | |
| 28 | Clamp, Mount Ee63. | F81080-4 | 1 | |
| 29 | Washer, 4mm Zinc | F81051-2 | 1 | |
| 30 | Bolt, Socket Head M4x8 8.8 Fe/zn5 Pn-87/m-82302 | F81011-36 | 1 | |
| 31 | Cover, Top | 517262-1 | 1 | |
| 32 | Bolt, #10-32x1/2 Hex Head | F05004-60 | 4 | |
| 33 | Bolt, M6x12 8.8 Fe/zn5 Pn-85/m-82105 | F81001-7 | 4 | |

2 Blade Guide Rollers & Arm

Blade Guide Assembly, Drive Side

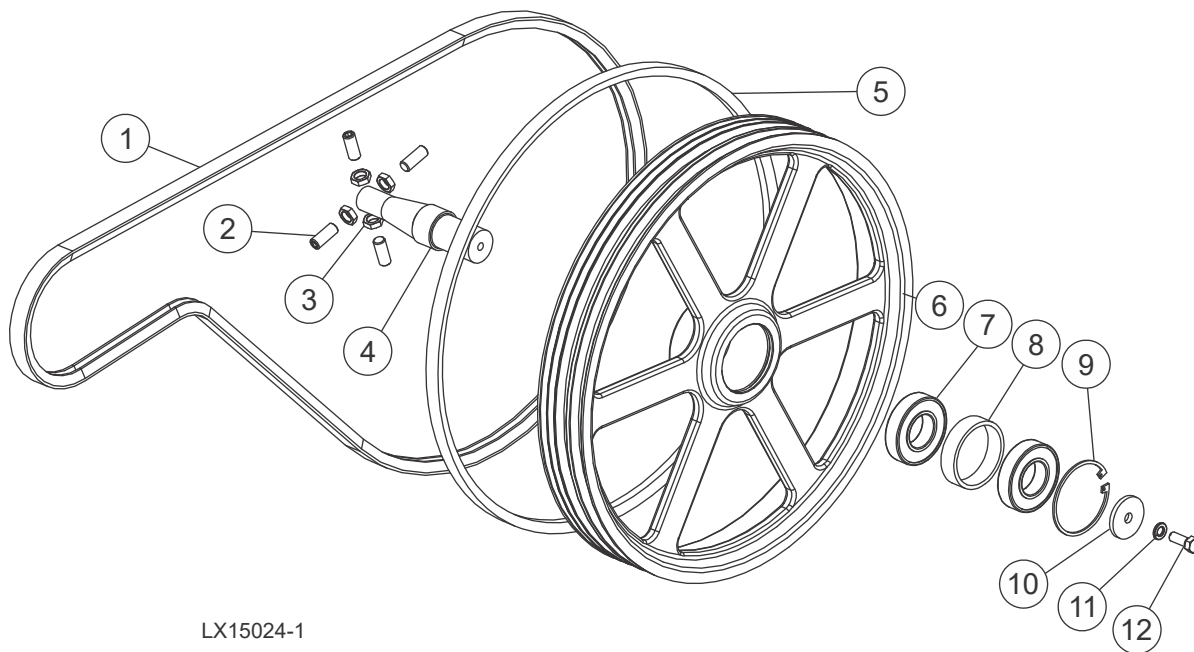
2.3 Blade Guide Assembly, Drive Side



| REF | DESCRIPTION (◆ Indicates Parts Available In Assemblies Only) | PART # | QTY. |
|-----|--|------------|------|
| 1 | MOUNT WELDMENT, BLADE GUIDE | 087744_US | 1 |
| | GUIDE ASSEMBLY, POLAND BLADE | 094682 | 1 |
| 2 | Bracket, Blade Guide Drive Side | 094679-1 | 1 |
| | Roller, Blade Guide w/Bearings | 087887 | 1 |
| 3 | Bolt, Blade Guide | 087763-1 | 1 |
| 4 | Ring, Blade Guide Roller Zinc | 087891-1 | 2 |
| 5 | Bearing, 6001 2rsr (Fag, Skf). | 087893 | 2 |
| 6 | Nut, M12 8 Fe/zn5 | F81034-2 | 1 |
| 7 | Roller, Blade Guide | 087889 | 1 |
| 8 | Ring, Retaining W28 Pn/m-85111. | F81090-9 | 2 |
| 9 | Screw, Set M10x1x40 Din913 A2-70. | F81015-2 | 2 |
| 10 | Nut, M10x1 Iso8675 | F81033-10 | 2 |
| 11 | Shaft, Roller Complete | 503588-1 | 1 |
| 12 | SCREW, M10-1X25MM STAINLESS SET, DIN 913 | F81015-4 | 4 |
| 13 | NUT, M10X1-04-ST-A2 ISO 8675 THIN | F81033-10 | 4 |
| 14 | WASHER, M10 FLAT | F05011-134 | 2 |
| 15 | WASHER, 10MM SPLIT LOCK | F05011-88 | 2 |
| 16 | BOLT, M10-1.5 X 25 SHC | F05022-12 | 2 |

SECTION 3 BLADE WHEELS & TENSIONER

3.1 Blade Drive Assembly

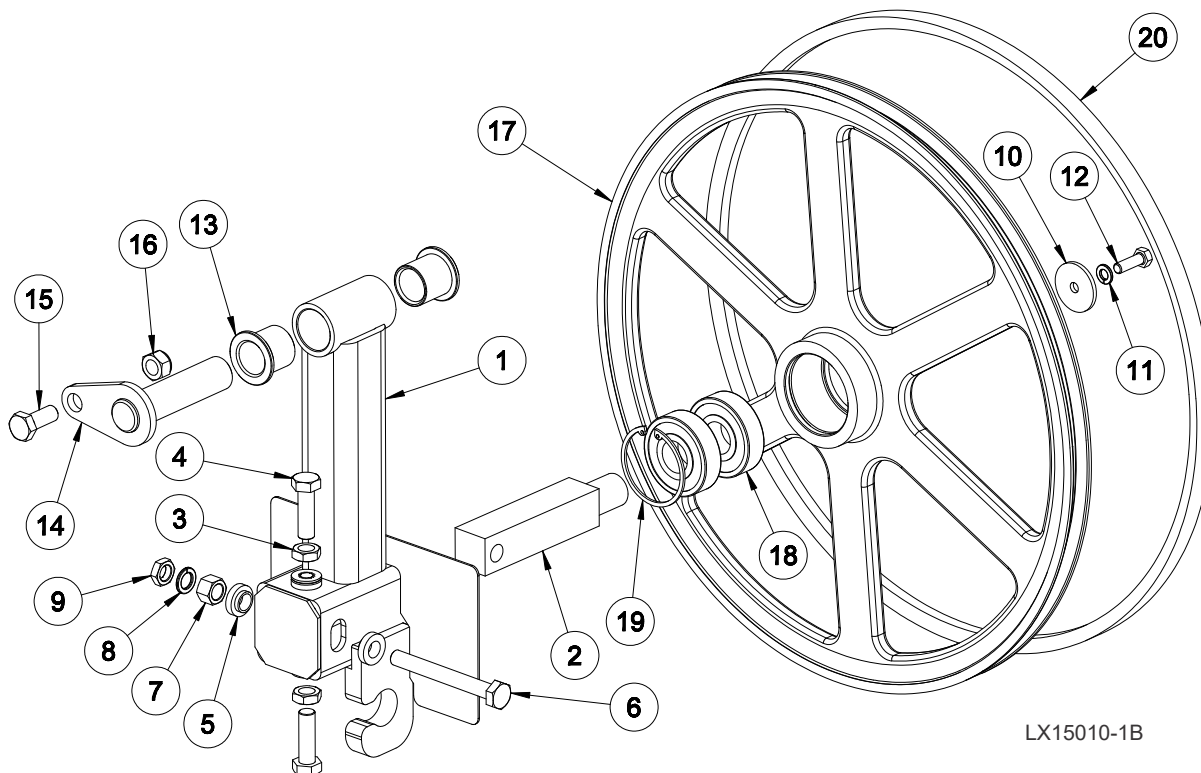


| REF | DESCRIPTION (◆ Indicates Parts Available In Assemblies Only) | PART # | QTY. |
|-----|--|---------------|----------|
| 1 | BELT, 2/3VFL900 DRIVE | 047751 | 1 |
| 2 | SCREW, M12X1.25X30 DIN913 STAINLESS SET | F81016-1 | 4 |
| 3 | NUT, M12X1.25 DIN439 THIN STAINLESS | F81034-9 | 4 |
| 4 | SHAFT, LT15 DRIVE | 014729 | 1 |
| 5 | BELT, B-57 | P04185 | 1 |
| | WHEEL ASSEMBLY, LT15 3V DRIVE | 036657 | 1 |
| 6 | Sheave, 3V LT15 Drive | 047702 | 1 |
| 7 | Bearing, 6207-2RS, C3, 35x72x17 | 014811 | 2 |
| 8 | Spacer, Drive Bearing LT15 | 014730 | 1 |
| 9 | Ring, 72MM OD Retaining N5002-281 | F04254-30 | 1 |
| 10 | WASHER, LT15 DRIVE WHEEL RET. | 014728 | 1 |
| 11 | WASHER, 3/8 SPLIT LOCK | F05011-4 | 1 |
| 12 | BOLT, 3/8-16X1 GR5 HH | F05007-87 | 1 |

3 Blade Wheel & Tensioner

Idle Blade Wheel Assembly

3.2 Idle Blade Wheel Assembly



| REF | DESCRIPTION (◆ Indicates Parts Available In Assemblies Only) | PART # | QTY. |
|-----|--|---------------|----------|
| | ASSEMBLY, LX150 BLADE WHEEL IDLER | 011267 | 1 |
| 1 | Weldment, LX150 Blade Wheel Idler | 011268 | 1 |
| 2 | Shaft, 30mm Sq Idler | 096045 | 1 |
| 3 | Nut, M12-1.75 Zinc Jam | F05027-19 | 2 |
| 4 | Bolt, M12x1.75x40mm Hex Head FT CL10.9 Zinc | F05004-250 | 2 |
| 5 | Spacer, .510x.937x.34 | S04253 | 2 |
| 6 | Bolt, M12x1.25x100 Gr8.8 Hex Head Full Thread | F81004-41 | 1 |
| 7 | Nut, M12x1.25 8.8 Hex Zinc | F81034-8 | 1 |
| 8 | Washer, 12MM Split Lock | F05011-123 | 1 |
| 9 | Nut, M12x1.25 8.8 Hex Zinc Thin | F81034-5 | 1 |
| 10 | Washer, .313x1.5x.125 | S08220 | 1 |
| 11 | WASHER, 8MM SPLIT LOCK, ZN | F05011-45 | 1 |
| 12 | Bolt, M8x1.25x25 Hex Head FT | F05004-40 | 1 |
| 13 | Bushing, 1 IDx1-1/4 ODx1-1/4 FI | P109 | 2 |
| 14 | Pin Weldment, Side Support | 042232 | 1 |
| 15 | Bolt, M12x1.75x30mm Hex Head Znc | F05008-175 | 1 |
| 16 | Nut, M12x1.75 Hex Nylock | F05010-209 | 1 |
| | SHEAVE ASSEMBLY, 19 IDLER | A08218 | 1 |
| 17 | Sheave, 18.62 Idler | P08125 | 1 |

Blade Wheel & Tensioner

Idle Blade Wheel Assembly

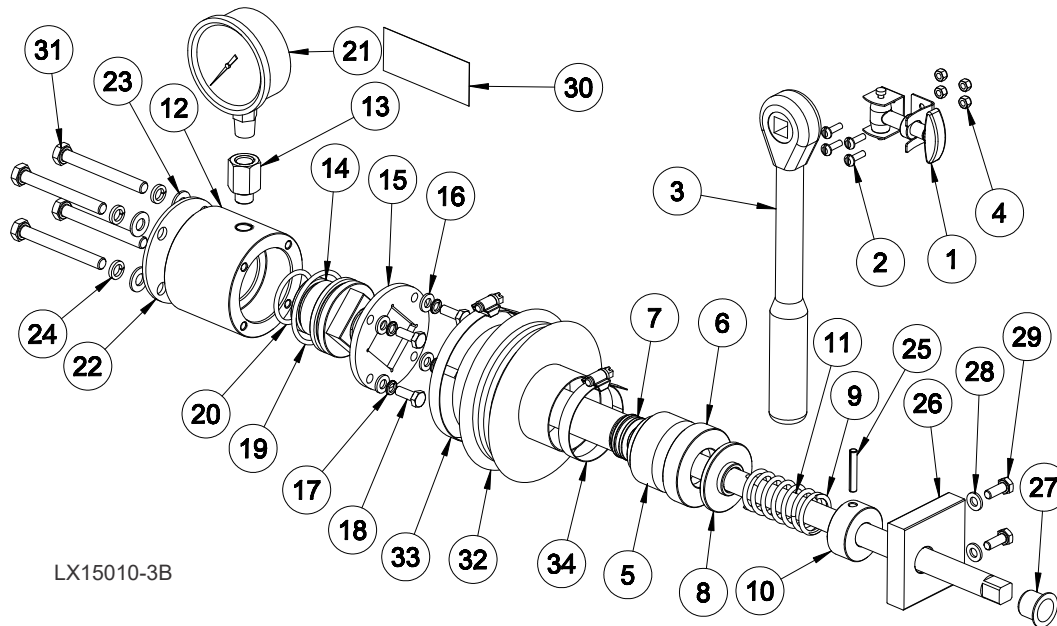
3

| | | | | |
|-----------|------------------------------|------------------|---|--|
| 18 | Bearing, .9843x2.4409x.6693 | P08066 | 2 | |
| 19 | Snap Ring, 2 7/16 IR Beveled | F04254-21 | 1 | |
| 20 | BELT, B-57 | P04185 | 1 | |

3 Blade Wheel & Tensioner

Blade Tensioner Assembly

3.3 Blade Tensioner Assembly



| REF | DESCRIPTION (◆ Indicates Parts Available In Assemblies Only) | PART # | QTY. |
|-----|--|-----------|------|
| 1 | LATCH, TOOL RETAINING | 011360 | 1 |
| 2 | SCREW, 4MX12 CRSL ROUND HEAD MACHINE | F05004-74 | 4 |
| 3 | TOOL, BLADE TENSIONING | 091620 | 1 |
| 4 | NUT, M4-.7 CLASS 8 NYLOCK | F05027-8 | 4 |
| | TENSIONER, LX150 BLADE | 510640 | 1 |
| 5 | Housing, Round | 510635 | 1 |
| 6 | Ring, Round | 510634-1 | 1 |
| 7 | Bearing, 51103 | 086675 | 1 |
| 8 | Washer, Blade Tensioner | 510633-1 | 1 |
| 9 | Spring, 60x23x3 | 088992 | 1 |
| 10 | Bushing, 16/38-20 22.5-4 Zinc | 510636-1 | 1 |
| 11 | Bolt, Blade Tensioner Zinc | 510650-1 | 1 |
| | Cylinder, Complete | 510641 | 1 |
| | Cylinder Assembly, Reduction | 510657-1 | 1 |
| 12 | Cylinder | 510637 | 1 |
| 13 | Fitting, Z-m12x1/w-1/4npt | 513280 | 1 |
| 14 | Piston, Blade Tensioner | 510638 | 1 |
| 15 | Plate, Tensioner | 510490-1 | 1 |
| 16 | Washer, 6.4 FE/ZN5 PN-78/M-82005 | F81053-1 | 4 |
| 17 | Washer, Split Lock Z 6.1 | F81053-3 | 4 |
| 18 | Bolt, M6x16-8.8-FE/ZN5 PN-M/82105 | F81001-15 | 4 |
| 19 | Ring, 46.2x3 | 510646 | 1 |

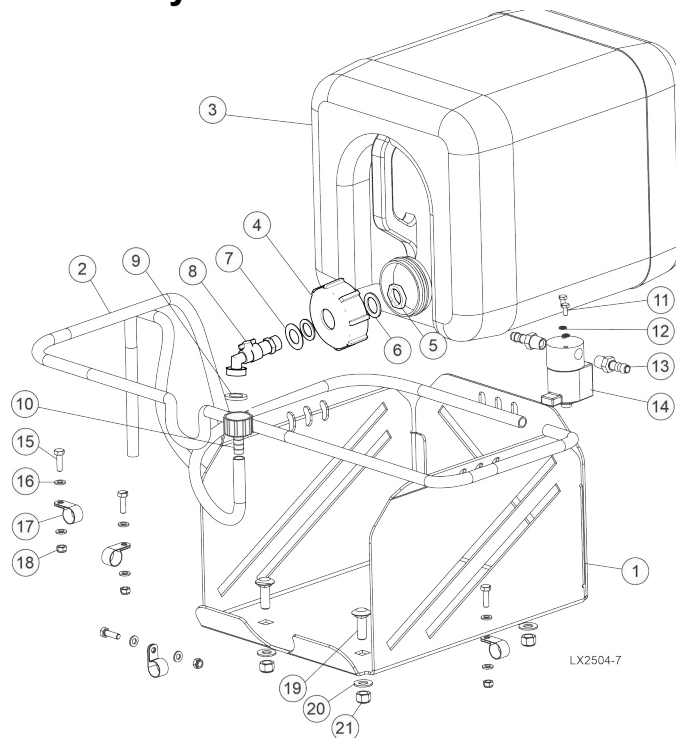
Blade Wheel & Tensioner
Blade Tensioner Assembly

3

| | | | | |
|----|---|-----------|---|--|
| 20 | Ring, 32.2x3 | 510647 | 1 | |
| 21 | Gauge, Oil Pressure 200 Bar (3000psi) | 505176 | 1 | |
| 22 | Cover, Tensioner | 510642-1 | 1 | |
| 23 | Washer, 8.4 FE/ZN5 PN-78/M-82005 | F81054-1 | 4 | |
| 24 | Washer, Split Lock M8 Fe/zn5 Pn-m/82008 | F81054-4 | 4 | |
| 25 | Pin, Roll 5x30 FE/ZN5 PN/M-85023. | F81044-21 | 1 | |
| 26 | Bracket, Blade Tensioner | 096730 | 1 | |
| 27 | Bushing, GFM-1618-17 | 089589 | 1 | |
| 28 | Washer, 6.4 FE/ZN5 PN-78/M-82005 | F81053-1 | 2 | |
| 29 | Bolt, M6x16-8.8-FE/ZN5 PN-M/82105 | F81001-15 | 2 | |
| 30 | Decal, Pressure Settings | 510643 | 1 | |
| 31 | Bolt, M8x70 8.8 Hex Head Zinc | F81002-71 | 4 | |
| | Cover, Blade Tensioner Complete | 515050 | 1 | |
| 32 | Cover, Blade Tensioner | 515051 | 1 | |
| 33 | Clamp, 70-80 Mm. | F81095-5 | 1 | |
| 34 | Clamp, 40-60 Mm. | F81095-4 | 1 | |

SECTION 4 SAW HEAD FRAME

4.1 Water Lube Assembly



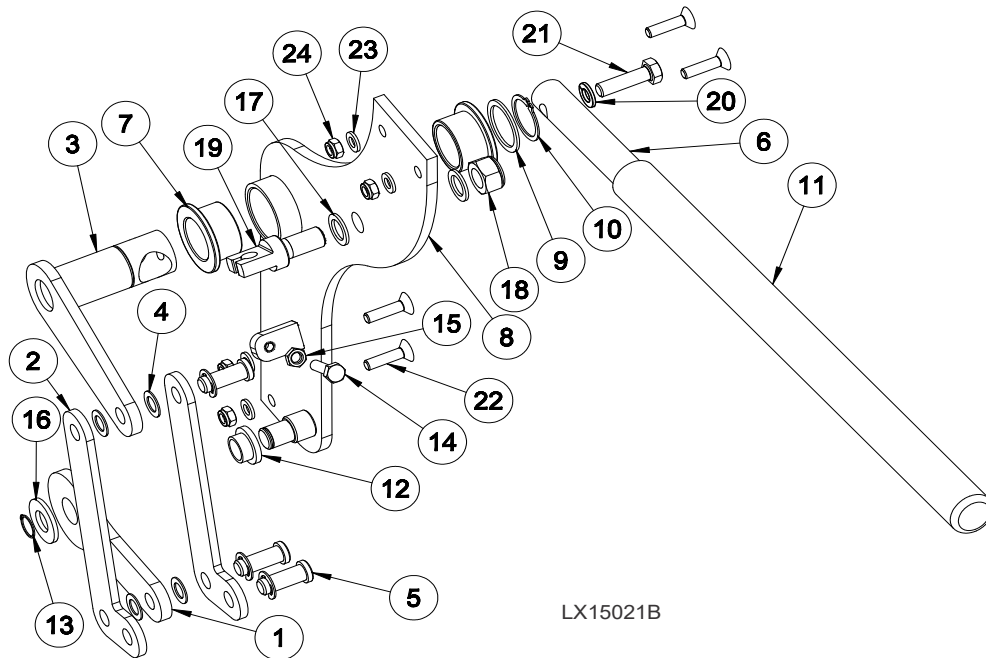
| REF | PART # | DESCRIPTION | COMMENTS | QTY. |
|-----------|-----------|---|----------|------|
| | 110970 | Assy, LX250 Water Lube | | 1 |
| 1 | 011449 | Tray, Water Bottle | | 1 |
| | 011448 | Assy, Water Bottle 5 Gallon | | 1 |
| 2 | R01885 | Hose, Water Lube Stock | | 1 |
| | 550787 | Assy, Water Bottle | | 1 |
| 3 | 513866 | Bottle, Water | | 1 |
| 4 | 550785 | Cap, Water Bottle | | 1 |
| 5 | 550779 | Gland Nut, 1/2 NPT | | 1 |
| 6 | 550780 | O-Ring, 27x20x1.5 | | 2 |
| 7 | 530841 | Shim, 21/37-1 | | 1 |
| 8 | 550776 | Fitting, Water Lube Shutoff Valve | | 1 |
| 9 | 550778 | Gasket, 1/2 (Batard) | | 1 |
| 10 | 550777 | Fitting, G3/4" x 10mm Hose Barb | | 1 |
| 11 | F05004-60 | Bolt, #10-32x1/2 Hh | | 2 |
| 12 | F05011-20 | Washer, #10 Split Lock | | 2 |
| 13 | P04682 | Fitting, 3/8 Barb 1/4npt Male | | 2 |
| 14 | 016140 | Solenoid Valve, 2-way NC 1/4 port 12VDC | | 1 |
| | F04875-13 | Connector, T-Tap 14-18Awg Female | | 2 |
| | 024123 | Diode Assy, Inductive Kick Protection | | 1 |
| | F05708-3 | Terminal, 1/4 14-16Ga Quick Female FI | | 2 |
| 15 | F05020-6 | Bolt, M6-1 x 20 Class 8 HH | | 4 |
| 16 | F05026-1 | Washer, M6 Flat Class 4 | | 8 |
| 17 | 010748 | Clamp, 5/8 EMT Coated | | 4 |

| REF | PART # | DESCRIPTION | COMMENTS | QTY. |
|-----|------------|-------------------------------------|----------|------|
| 18 | F05010-200 | Nut, M6-1.0 Nylon Lock | | 4 |
| 19 | F05022-19 | Bolt, M10-1.5x30 Carriage Class 8.8 | | 4 |
| 20 | F05011-134 | Washer, M10 Flat SAE | | 4 |
| 21 | F05004-270 | Nut, M10-1.50 Hex Nyl Lock | | 4 |

4 Saw Head

Clutch Assembly

4.2 Clutch Assembly



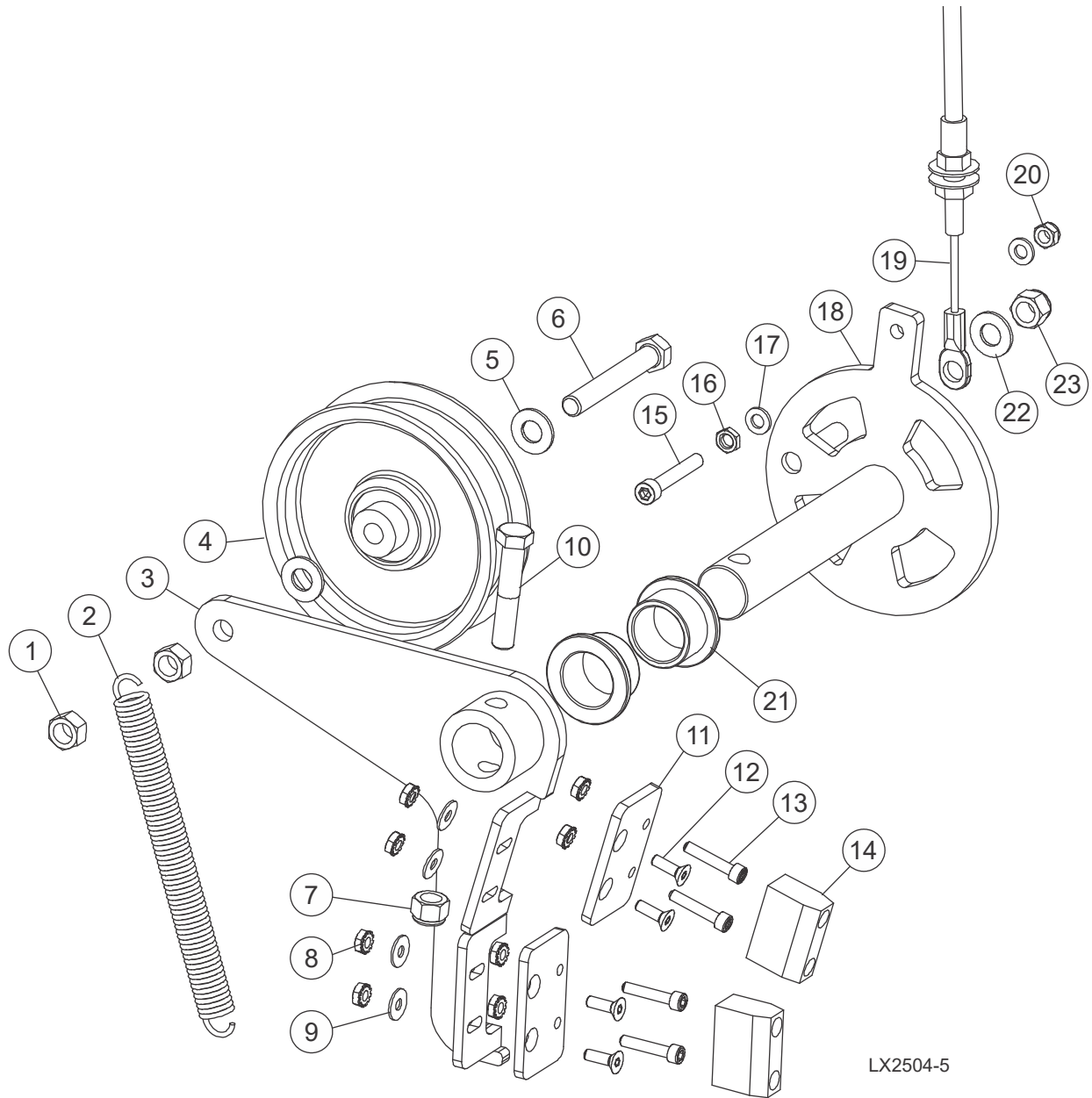
LX15021B

| REF | DESCRIPTION (◆ Indicates Parts Available In Assemblies Only) | PART # | QTY. |
|-----|--|---------------|----------|
| | ASSEMBLY, LX150 CLUTCH | 011219 | 1 |
| 1 | Plate, LX150 Clutch Pivot Arm | 011215 | 1 |
| 2 | Plate, LX150 Clutch Engagment Arm | 011214 | 2 |
| 3 | Weldment, LX150 Throttle Engagement | 011132 | 1 |
| 4 | Washer, 3/8 ID 5/8 OD .032 Thick Nylon | 033444 | 4 |
| 5 | Pin, 3/8x13/16 Clevis, Stainless | F05012-154 | 3 |
| 6 | Handle, LX150 Clutch Engagment | 011217 | 1 |
| 7 | Bushing, 1x1 1/4x3/4 Flg Bronze | P737 | 2 |
| 8 | Weldment, LX150 Clutch Hub | 011193 | 1 |
| 9 | Shim, 1 ID 1-1/4 OD | 076037 | 1 |
| 10 | Ring, 1 OR | F04254-15 | 1 |
| 11 | Grip, Handle | 028390 | 1 |
| 12 | Bushing, 1/2IDx5/8ODx3/8 Long Fl | 049007 | 1 |
| 13 | Ring, Shaft 1/2 In, Retaining | F04254-18 | 1 |
| 14 | Bolt, M6-1 x 25 Class 8 Hex Head | F05020-33 | 1 |
| 15 | Nut, M6x1 Metric Jam | F05010-226 | 1 |
| 16 | Washer, 1/2 SAE Flat | F05011-2 | 1 |
| 17 | Washer, 1/2x3/4x1/16 Nylon | P05251-1 | 2 |
| 18 | Nut, M12x1.75 Hex Nylock | F05010-209 | 1 |
| 19 | Bolt, LX150 Throttle Pivot | 011235 | 1 |
| 20 | Washer, 8mm Split Lock, Zn | F05011-45 | 1 |

| | | | | |
|---|---------------------------------|-------------------|---|--|
| 21 | Bolt, M8-1.25x30mm Hex HeadC FT | F05021-11 | 1 | |
| 22 | Screw, M6x1x25mm FHS | F05004-266 | 4 | |
| 23 | Washer, M6 Flat Class 4 | F05026-1 | 4 | |
| 24 | Nut, M6-1.0 Nylon Lock | F05010-200 | 4 | |
| SEE YOUR SPECIFIC ENGINE MANUAL FOR CLUTCH CABLE P/N | | | | |

4 Saw Head Brake Assembly

4.3 Brake Assembly



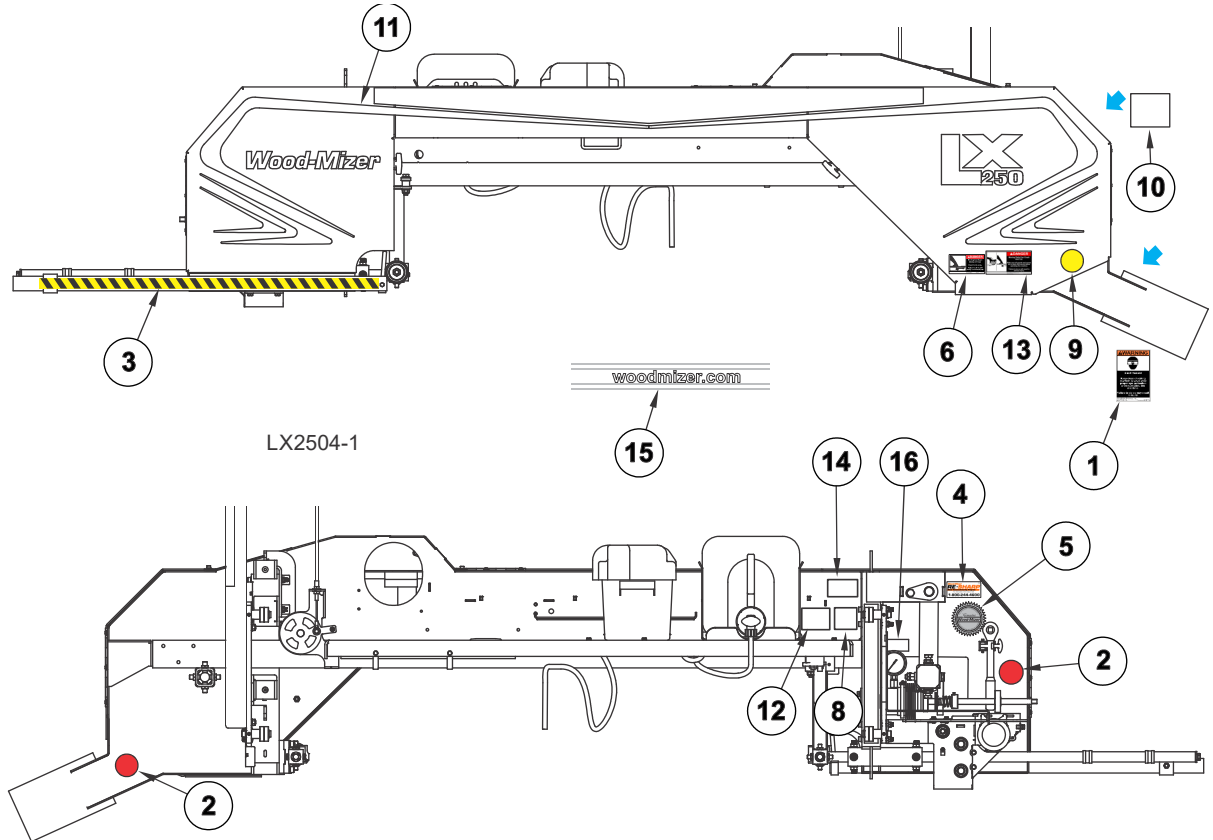
| REF | DESCRIPTION (♦ Indicates Parts Available in Assemblies Only) | PART # | QTY. |
|-----|--|------------------|------|
| | ASSY, BRAKE/CLUTCH | 065874 | |
| 1 | Nut, 3/8-16 Swaged Lock | F05010-25 | 2 |
| 2 | Spring, Idler Arm LT15/D/E/G | 034810 | 1 |
| 3 | Weldment, Clutch/Brake Arm | 065873 | 1 |
| 4 | Idler, 4" O.D.x 3/8 Bore | 034602 | 1 |

| REF | DESCRIPTION (♦ Indicates Parts Available in Assemblies Only) | PART # | QTY. | |
|-----|--|-------------|------|--|
| 5 | Washer, 3/8 Flat SAE | F05011-3 | 2 | |
| 6 | Bolt, 3/8-16x2 3/4 FT Gr5 | F05007-230 | 1 | |
| 7 | Nut, 3/8-16 Hex Nyloc | F05010-10 | 1 | |
| 8 | Nut, #10-24 Keps-> | F05010-14 | 8 | |
| 9 | Washer, #10 SAE Flat | F05011-18 | 4 | |
| 10 | Bolt, 3/8-16X2 HH GR5 | F05007-124 | 1 | |
| 11 | Plate, Brake Adjustment | 065872 | 2 | |
| 12 | Screw, 10-24x5/8 FSHC BO | F05004-282 | 4 | |
| 13 | Bolt, 10-24x1 BO SHC | F05004-2 | 4 | |
| 14 | Block, LT15 Brake | 016488 | 2 | |
| 15 | BOLT, M6-1.0X40MM SHCS | F05004-284 | 1 | |
| 16 | NUT, M6X1 METRIC JAM | F0501-0-226 | 1 | |
| 17 | WASHER, M6 FLAT CLASS 4 | F05026-1 | 2 | |
| 18 | WELDMENT, LX150 CLUTCH/BRAKE PIVOT | 011187 | 1 | |
| 19 | CABLE, .140"X96" CLUTCH | 113951 | 1 | |
| 20 | NUT, M6-1.0 NYLON LOCK | F05010-200 | 1 | |
| 21 | BUSHING, 1X1 1/4X3/4 FLG BRONZE | P737 | 2 | |
| 22 | WASHER, 3/8 FLAT SAE | F05011-3 | 1 | |
| 23 | NUT, 3/8-16 HEX NYL LOCK | F05010-10 | 1 | |

4 Saw Head

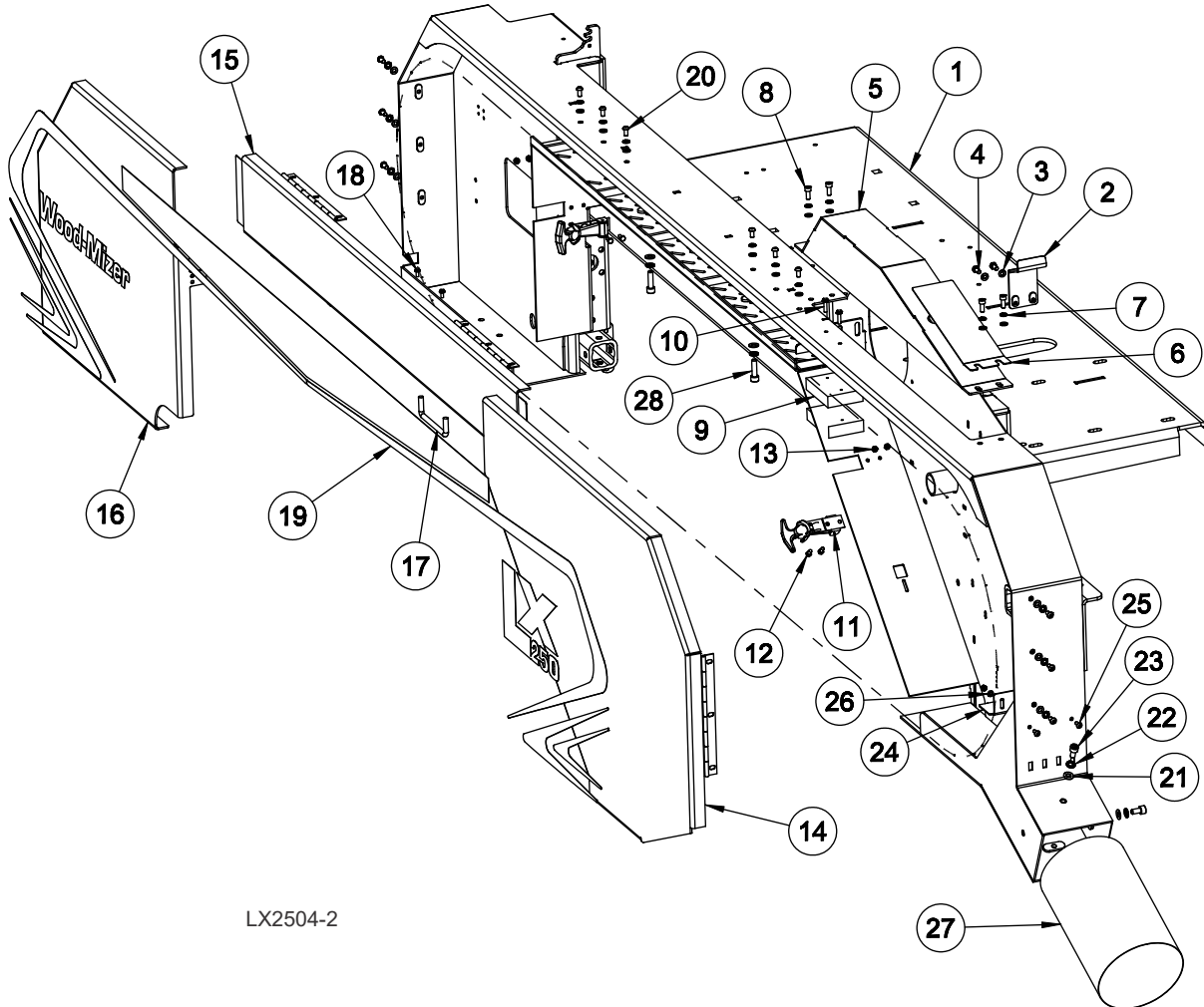
Saw Head Decals

4.4 Saw Head Decals



| REF | DESCRIPTION (◆ Indicates Parts Available In Assemblies Only) | PART # | QTY. |
|-----|--|--------|------|
| 1 | DECAL, SAWDUST CHUTE WARNING | P11754 | 1 |
| 2 | DECAL, RED REFLECTIVE 2" ROUND | P07452 | 2 |
| 3 | DECAL, BLADE GUIDE ARM STRIPE | 015849 | 1 |
| 4 | DECAL, BLADE RESHARP INFO | P12879 | 1 |
| 5 | DECAL, WOOD-MIZER QUALITY & INFORMATION | 079278 | 1 |
| 6 | DECAL, BLADE DANGER | S11752 | 1 |
| 7 | DECAL, BLADE ALIGNMENT | P11789 | 1 |
| 8 | DECAL, TENSION SCREW | P11790 | 1 |
| 9 | DECAL, AMBER REFLECTIVE 2" ROUND | P07453 | 1 |
| 10 | DECAL, BUILT IN THE USA | 074008 | 1 |
| 11 | DECAL, LX250 BLADE COVER | 011420 | 1 |
| 12 | DECAL, HYDRAULIC BLADE TENSION CAUTION | P10147 | 1 |
| 13 | DECAL, BLADE COVERS DANGER | 033254 | 2 |
| 14 | DECAL, BLADE TENSION RANGES | P12373 | 1 |
| 15 | DECAL, WHITE WOODMIZER.COM (LOCATED ON POWER FEED TUBE) | 107170 | 1 |
| 16 | DECAL, TENSION | 128179 | 1 |

4.5 Blade Housing Covers & Saw Head Hardware



LX2504-2

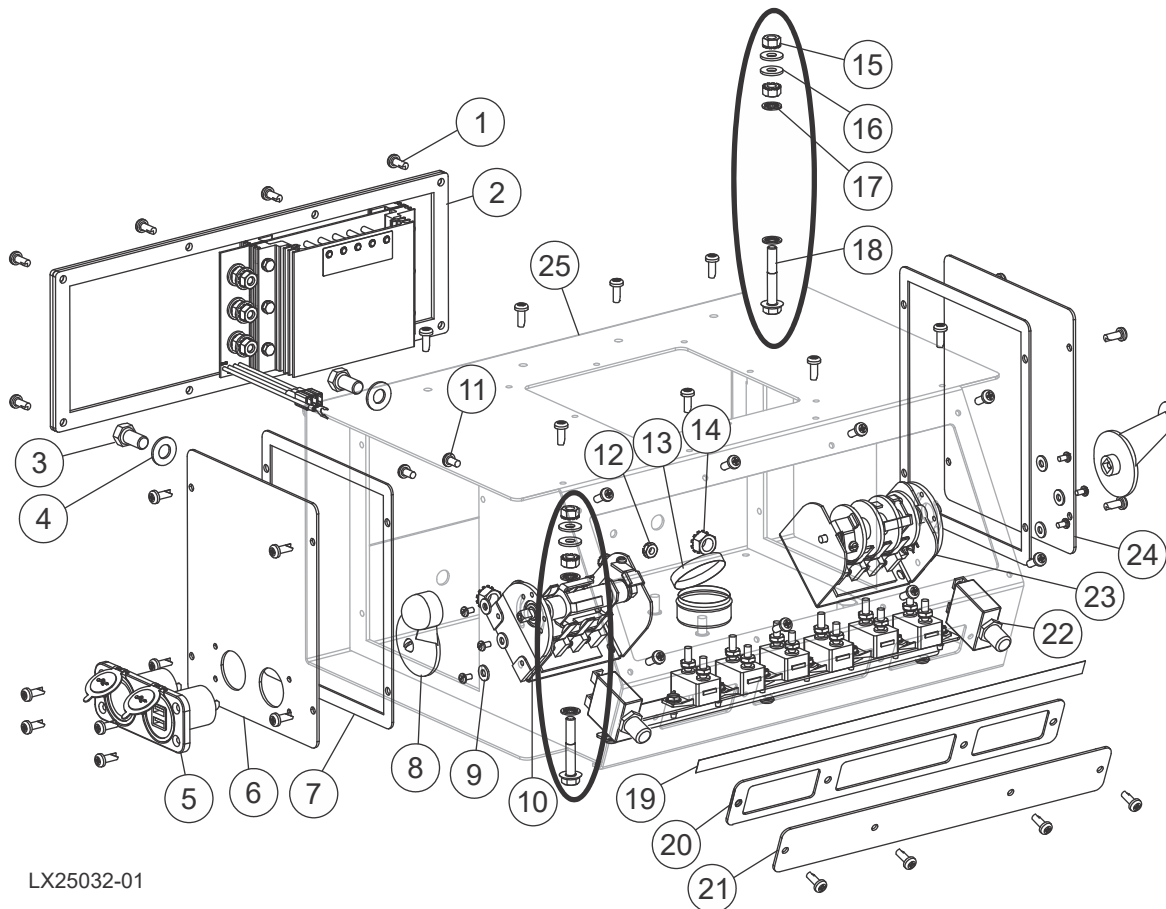
| REF | DESCRIPTION (◆ Indicates Parts Available In Assemblies Only) | PART # | QTY. |
|-----|--|------------|------|
| 1 | HEAD WELDMENT, LX250 | 011407 | 1 |
| 2 | WELDMENT, BELT ENHANCE BRKT | 011447 | 1 |
| 3 | WASHER, M6 FLAT CLASS 4 | F05026-1 | 18 |
| 4 | SCREW, M6-1X12 HEX HEADC FT | F05005-99 | 2 |
| 5 | WELDMENT, TOP BELT COVER | 011411 | 1 |
| 6 | PLATE, BELT GUARD COVER | 113973 | 1 |
| 7 | WASHER, M6 SPLIT LOCK | F05026-2 | 16 |
| 8 | BOLT, M6-1.0X16MM SHCS | F05004-206 | 4 |
| 9 | PAD, BLADE VIBRATION | 015844 | 2 |
| 10 | SCREW, #10X3/4 SL HEX WAS HEAD SCR | F05015-33 | 2 |
| 11 | LATCH, FLEXIBLE DRAW | 014829 | 2 |
| 12 | BOLT, M5-.8 X10 CLASS8 HEX HEAD | F05020-13 | 4 |

4**Saw Head***Blade Housing Covers & Saw Head Hardware*

| | | | | |
|----|---------------------------------------|------------|----|--|
| 13 | NUT, M5-.8 CLASS 8 HEX NYLOC | F05027-3 | 6 | |
| 14 | WELDMENT, COVER LEFT | 117076 | 1 | |
| 15 | WELDMENT, COVER CENTER | 117077 | 1 | |
| 16 | WELDMENT, COVER LEFT | 011416 | 1 | |
| 17 | HANDLE, 4 W/BOLT | P08065 | 1 | |
| 18 | BOLT, #8-32X3/8 SELF TAP | F05015-8 | 2 | |
| 19 | DECAL, LX250 | 011420 | 1 | |
| 20 | SCREW, M6-1.0 X 12MM BHCS BLACK OXIDE | F05004-275 | 12 | |
| 21 | WASHER, M8 FLAT | F05026-4 | 4 | |
| 22 | WASHER, M8 SPRING LOCK ZINC | F05011-130 | 4 | |
| 23 | SCREW, M8-1.25 X 16 SHC | F05021-10 | 2 | |
| 24 | PLATE, LX150 SAWDUST DIVERTER | 108060 | 1 | |
| 25 | SCREW, M5-.8X12MM BHCS SS | F05020-55 | 2 | |
| 26 | WASHER, 5.3 FE/ZN5 PN-78/M-82005 | F81052-1 | 2 | |
| 27 | HOSE, OD 6INCH | 113974 | 1 | |
| 28 | SCREW, M8-1.25 X 30 SHC | F05021-1 | 2 | |

SECTION 5 CONTROL & BATTERY BOXES

5.1 Control Box Assembly



LX25032-01

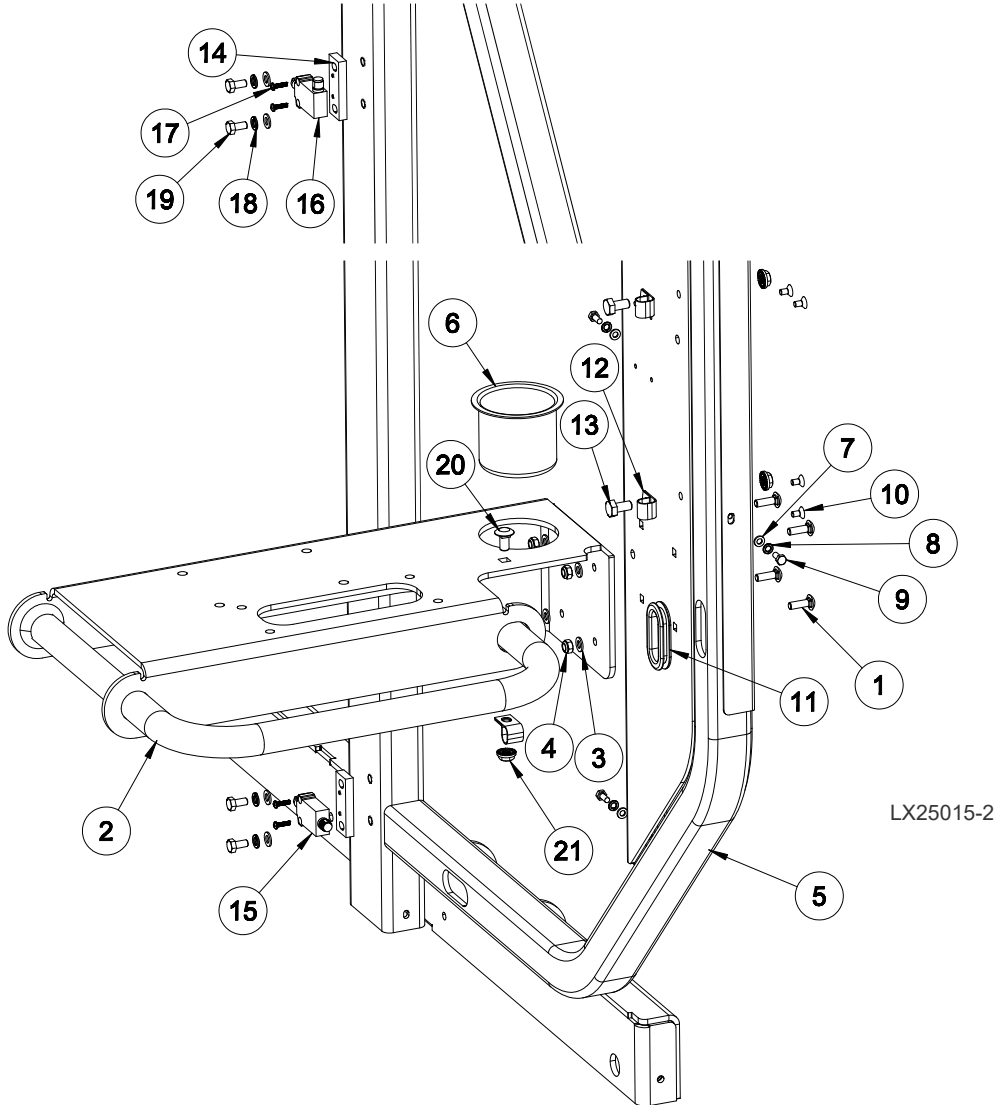
| REF | DESCRIPTION (♦ Indicates Parts Available in Assemblies Only) | PART # | QTY. |
|-----|--|-----------|------|
| | OPERATOR ASSY, LX250G38 | 073675 | |
| | Control Assembly, Simple Set (See Section 5.5) | 073694 | 1 |
| | Panel Assembly,Front (LX150 G25/LX250 G38/E15) (See Section 5.4) | 073673 | 1 |
| 1 | Bolt, #10-24x1/2 Ph Pan Hd, Type 23 | F05015-17 | 40 |
| 2 | Panel Assy, Consolidated P/F CTRL 97+ | 073578 | 1 |
| 3 | Bolt, 3/8-16x3/4 HH Gr2 | F05007-27 | 2 |
| 4 | Washer, 3/8 Flat SAE | F05011-3 | 2 |
| 5 | USB Socket, Accessory | 011274 | 1 |
| 6 | Plate, Control Box Side | 011273 | 1 |
| 7 | Gasket, Side Panel Control 97 | 015274 | 2 |
| 8 | Handle, Drum Switch with Screw | P12500 | 2 |
| 9 | Washer, #8 SAE Flat-> | F05011-41 | 6 |

5 Control & Battery Boxes

Control Box Assembly

| REF | DESCRIPTION (♦ Indicates Parts Available in Assemblies Only) | PART # | QTY. | |
|-----|--|------------|------|--|
| 10 | Switch Assembly, Power Feed Drum | E20439 | 1 | |
| | Spring, Drum Switch | P12570 | 1 | |
| 11 | Screw, #10-24x3/8 Phillips PH Machine-> | F05004-3 | 2 | |
| 12 | Nut, #10-24 Keps-> | F05010-14 | 2 | |
| 13 | Grease, Drum Switch | A20463 | 1 | |
| 14 | Nut, 3/8-16 Keps | F05010-19 | 2 | |
| 15 | Nut, 1/4-20 Keps-> | F05010-9 | 2 | |
| 16 | Washer, 1/4 SAE Flat | F05011-11 | 2 | |
| 17 | Washer, 1/4 Int Star Heavy Duty | F05011-69 | 2 | |
| 18 | Screw, 1/4-20x1 3/4 Zinc Pl Flange Cap | F05005-181 | 1 | |
| 19 | Decal, Front Breaker ID | 073602 | 1 | |
| 20 | Gasket, Circuit Breaker Cover | 015266 | 1 | |
| 21 | Panel, Circuit Breaker Cover | 015376 | 1 | |
| 22 | Breaker Assy, Sawmill Control (No Wires) (See Section 5.3) | 073595 | 1 | |
| 23 | Switch, S12 Bulk Drum | E20440-B | 1 | |
| | Spring, Drum Switch | P12570 | 1 | |
| 24 | Plate, Control Box Side | 006473 | 1 | |
| 25 | Weldment, Control Box | 011271 | 1 | |

5.2 Control Box Mount & Up/Down Limit Switches

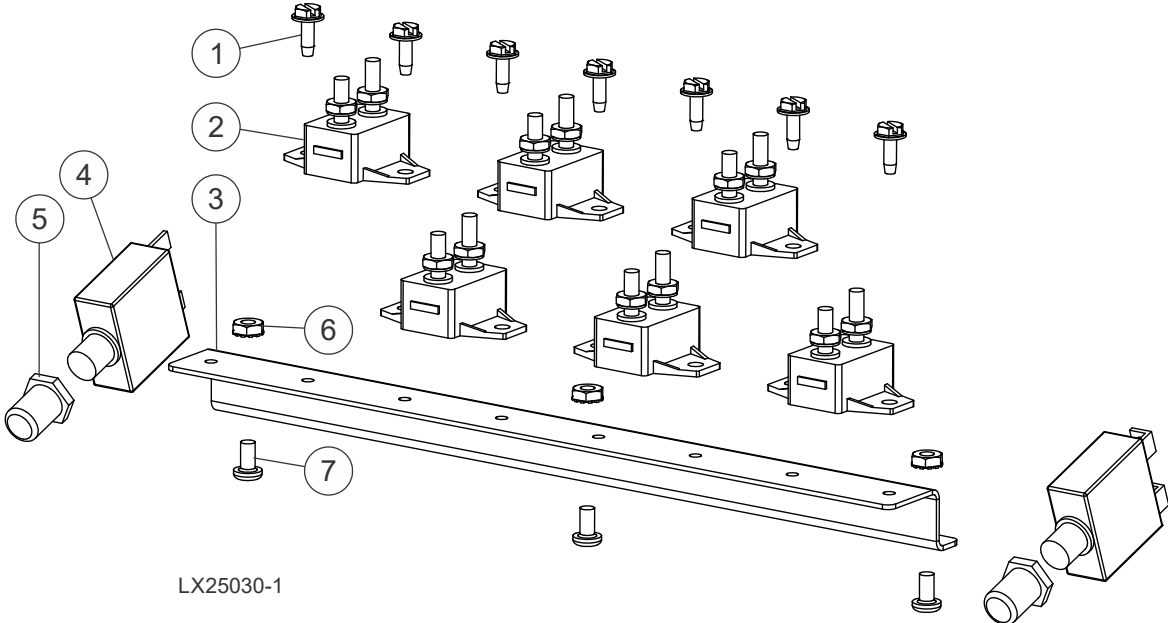


| REF | DESCRIPTION (◆ INDICATES PARTS AVAILABLE IN ASSEMBLIES ONLY) | PART # | QTY. |
|-----|--|------------|------|
| 1 | BOLT, M8-1.25X25 CARRIAGE CLASS 8.8 | F05021-17 | 4 |
| 2 | WELDMENT, LX150 CONTROL MOUNT | 113977 | 1 |
| 3 | WASHER, M8 FLAT ZINC | F05011-131 | 8 |
| 4 | NUT, M8-1.25 HEX NYLOCK | F05010-132 | 4 |
| 5 | GUARD, CLUTCH | 011427 | 1 |
| 6 | CUP HOLDER | 011382 | 1 |
| 7 | WASHER, M6 FLAT CLASS 4 | F05026-1 | 6 |
| 8 | WASHER, M6 SPLIT LOCK | F05026-2 | 6 |
| 9 | BOLT, M6-1 X 14 CLASS 8 HEX HEAD | F05020-7 | 6 |

5**Control & Battery Boxes***Control Box Mount & Up/Down Limit Switches*

| | | | | |
|----|---------------------------------------|------------|---|--|
| 10 | SCREW, M6X1X12MM FHS | F05004-204 | 4 | |
| 11 | GROMMET, 1-3/4" ID X 2" HOLE RUBBER | 011269 | 4 | |
| 12 | CLAMP, 3/4EMT COATED | 028593 | 5 | |
| 13 | BOLT, M10-1.5 X 20 CLASS 8 HEX HEAD | F05022-2 | 4 | |
| 14 | BRACKET, LIMIT SWITCH MOUNTING | 011375 | 2 | |
| 15 | SWITCH, 90× LIMIT | 114013 | 1 | |
| 16 | SWITCH, 90× LIMIT | 011376 | 1 | |
| 17 | SCREW, M4-.7X15 PAN HEAD PHILLIPS | F05020-26 | 4 | |
| 18 | WASHER, M8 SPRING LOCK ZINC | F05011-130 | 4 | |
| 19 | BOLT, M8-1.25X16 HEX HEAD ZINC | F05004-47 | 4 | |
| 20 | BOLT, M10-1.5X20MM CARRIAGE CLASS 8.8 | F05022-23 | 1 | |
| 21 | NUT, M10 X 1.5 FLANGED SERATED LOCK | F05010-249 | 5 | |

5.3 Circuit Breakers



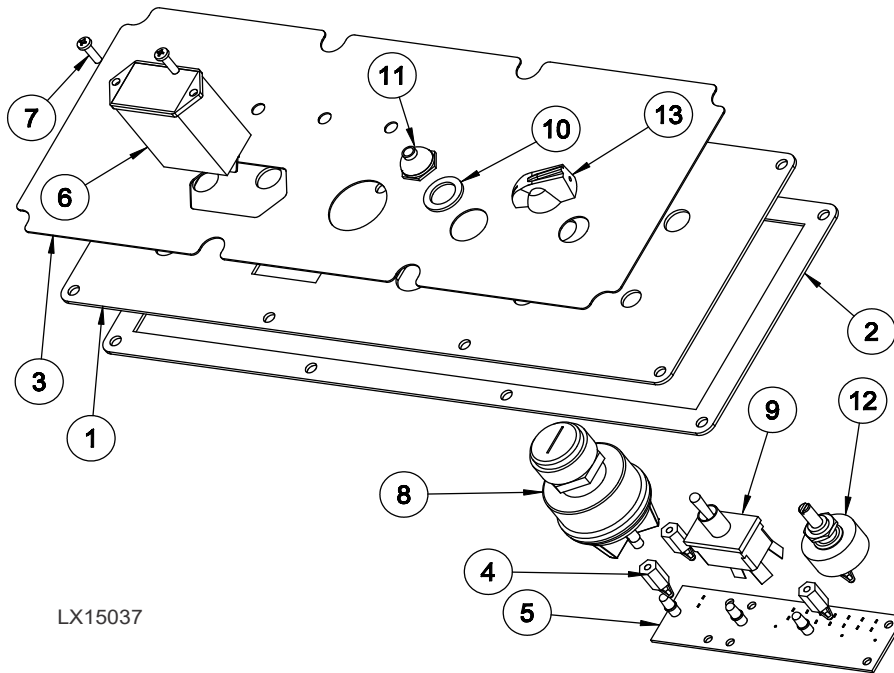
LX25030-1

| REF | DESCRIPTION (◆ INDICATES PARTS AVAILABLE IN ASSEMBLIES ONLY) | PART # | QTY. |
|-----|--|---------------|----------|
| | BREAKER ASSY, SAWMILL CONTROL (NO WIRES) | 073595 | 1 |
| 1 | Bolt, #10-24x1/2 Self Tap | F05015-7 | 7 |
| 2 | Breaker, 15A Manual Reset | E20430 | 6 |
| 3 | Rail, Circuit Breaker Self Tap | 052826 | 1 |
| 4 | BOOT, CIRCUIT BREAKER | 021253 | 2 |
| 5 | BREAKER, 50A MANUAL RESET PANEL MOUNT | 021256 | 2 |
| 6 | NUT, #10-24 KEPS | F05010-14 | 3 |
| 7 | BOLT, #10-24X3/8 CRSL PH | F05004-3 | 3 |

5 Control & Battery Boxes

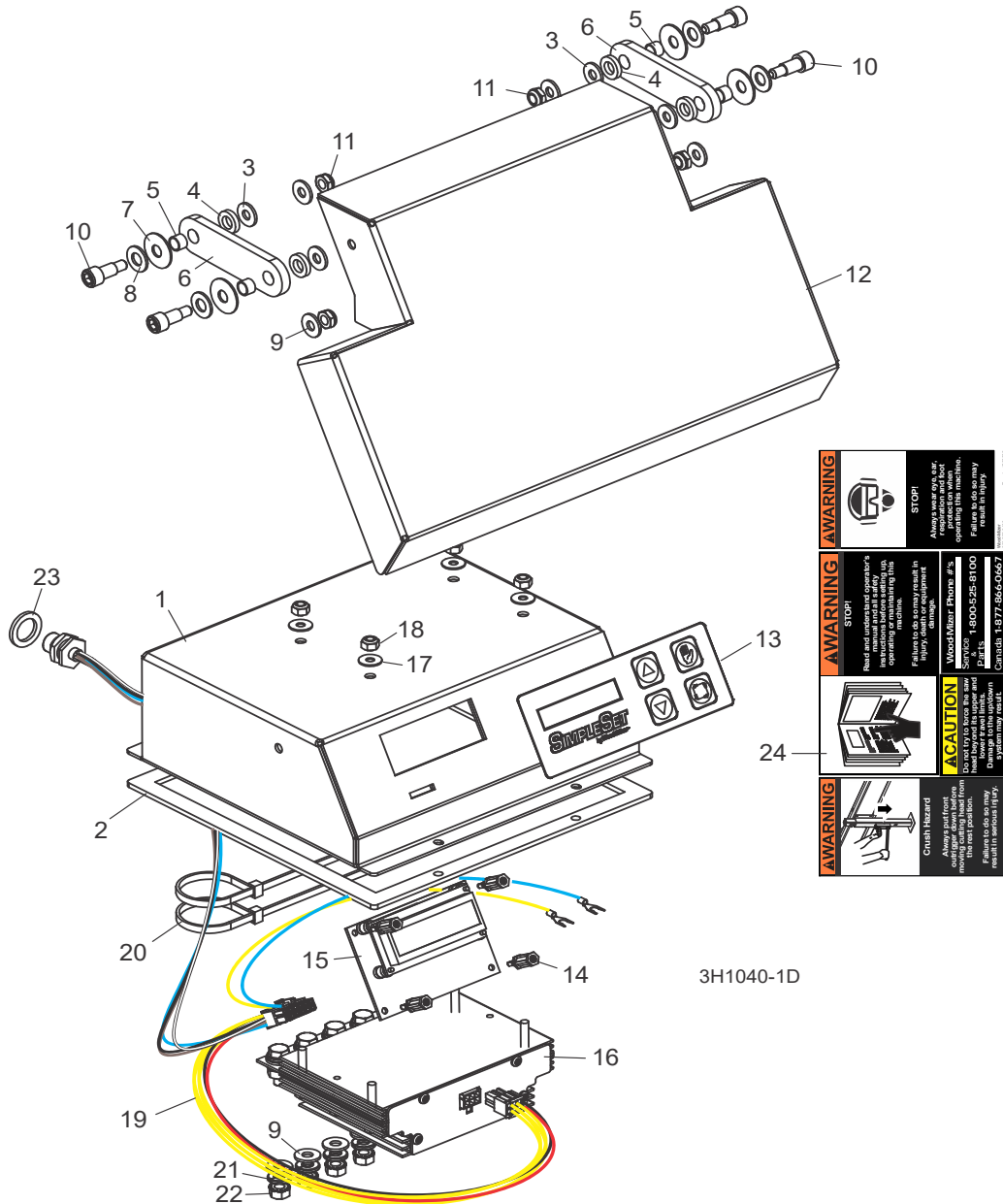
Front Panel Assembly & Harnesses (G25/G38)

5.4 Front Panel Assembly & Harnesses (G25/G38)



| REF | DESCRIPTION (◆ INDICATES PARTS AVAILABLE IN ASSEMBLIES ONLY) | PART # | QTY. |
|-----|--|---------------|------|
| | PANEL ASSEMBLY,FRONT (LX150 G25/LX250 G38/E15) | 073673 | 1 |
| 1 | Panel Weldment, Face | 015302 | 1 |
| 2 | Gasket, Face Panel | 015270 | 1 |
| 3 | Decal, Gas/Elec Sawmill Control Panel | 015271 | 1 |
| 4 | Standoff, PCB 1/2 #6 Female Threading | 023147 | 4 |
| 5 | PCB Assembly, LED Diesel Sawmill 1997 | 015416 | 1 |
| 6 | Meter, Hour Rectangle Mount | 015401 | 1 |
| 7 | Screw, #6-32X1/2 Phil Pan HD T23, ZN | F05015-28 | 2 |
| 8 | Switch, Key | P04350 | 1 |
| 9 | Switch, Toggle 21A DPDT Rev Mom Spade | 024200 | 1 |
| 10 | Washer, 1/2x3/4x1/16 Nylon | P05251-1 | 1 |
| 11 | Boot, Toggle Switch | P02575 | 1 |
| 12 | Pot Assembly, Feed Rate Control Sawmill | 024450-1 | 1 |
| 13 | Knob, Speed Control | P06257 | 1 |
| | LX250G38 HARNESSSES | | |
| | Harness Assy, LX250G38 Upper | 073578 | 1 |
| | Harness Assy, LX250 Feed | 073677 | 1 |
| | Harness Assy, LX250 Up/Down | 073678 | 1 |
| | LX150G25 HARNESSSES | | |
| | Harness Assy, LX150G25 Upper | 073587 | |
| | Harness Assy, LX150 Feed | 073562 | |
| | Harness Assy, LX150 Up/Down | 073563 | |

5.5 Simple Set Control (LX150/250, SSW-150-A)



WARNING STOP! Always wear eye protection on all production equipment. Failure to do so may result in injury.

WARNING STOP! Read and understand operator's manual prior to safety operation or maintaining this machine. Failure to do so may result in injury.

CAUTION Do not try to force the saw blade through the workpiece. Lower travel limits system may result in injury.

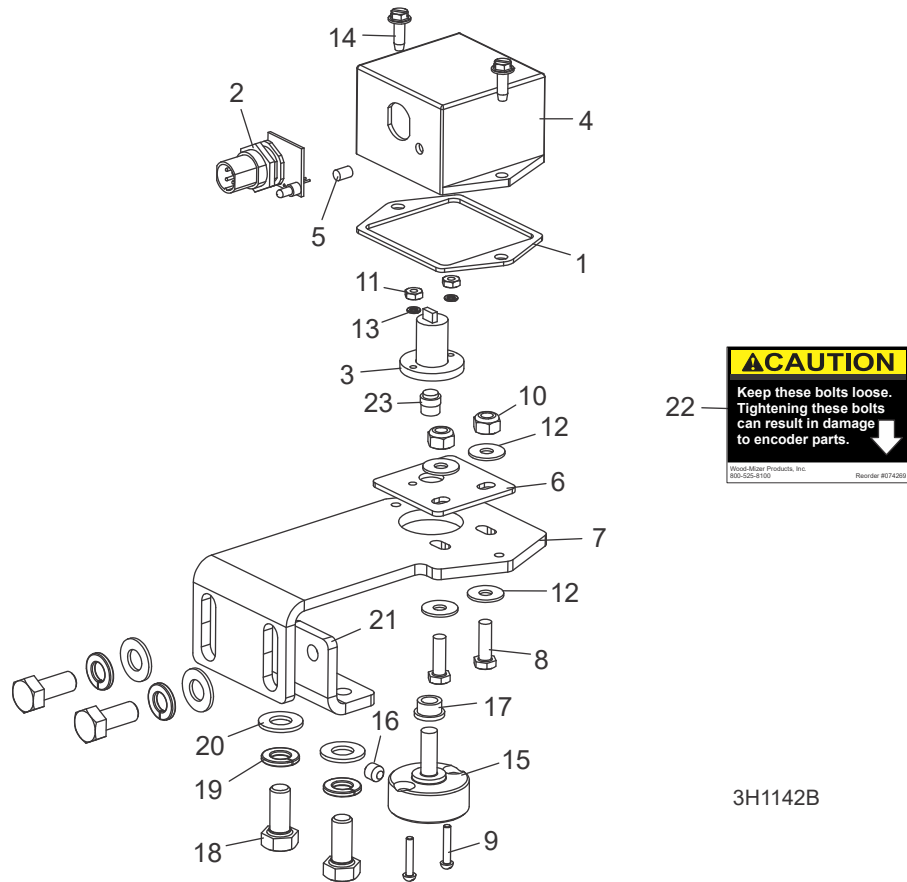
WARNING Crush Hazard Always lock front outrigger down before moving the saw. Failure to do so may result in serious injury.

WoodMaster Phone #s
 Service: 1-800-525-8100
 Parts: 1-800-525-8100
 Canada: 1-877-666-0667

| REF | DESCRIPTION (◆ Indicates Parts Available In Assemblies Only) | PART # | QTY. | |
|-----|--|--------|------|--|
| | CONTROL ASSEMBLY, SIMPLE SET | 073694 | 1 | |
| 1 | Box Weldment, Simple Set Control | 006845 | 1 | |
| 2 | Gasket, Simple Set Control Box | 006863 | 1 | |

| | | | | |
|----|---|------------|---|--|
| 3 | Washer, 1/4" SAE Flat | F05011-11 | 4 | |
| 4 | Washer, 5/16" Nylon Flat | F05011-92 | 4 | |
| 5 | Bushing, 5/16" ID x 3/8" OD x 1/4" Bronze | 016655 | 4 | |
| 6 | Plate, Simple Set Control Cover Link | 006872 | 2 | |
| 7 | Washer, 5/16" Belleville | F05011-93 | 4 | |
| 8 | Washer, 5/16" SAE Flat | F05011-17 | 4 | |
| 9 | Washer, 1/4" SAE Flat | F05011-11 | 8 | |
| 10 | Bolt, 5/16" x 1/2" Shoulder 1/4-20 Thread Stainless | F05006-69 | 4 | |
| 11 | Nut, 1/4-20 Hex Half Nylon Lock | F05010-156 | 4 | |
| 12 | Cover, Simple Set Control | 006846 | 1 | |
| 13 | Membrane, Simple Set Control Switch | 053347 | 1 | |
| 14 | Standoff, 5/8" Threaded PCB | 053385 | 4 | |
| 15 | PCB Assembly, Simple Set Control | 073695 | 1 | |
| 16 | H-Bridge Assembly, Simple Set | 053373 | 1 | |
| 17 | Washer, #10 SAE Flat | F05011-18 | 4 | |
| 18 | Nut, #10-24 Hex Nylon Lock | F05010-160 | 4 | |
| 19 | Harness Assembly, Simple Set Control | 053379 | 1 | |
| 20 | Tie Wrap, 3/16" x 6" UV Black | F05089-3 | 2 | |
| 21 | Washer, 1/4" Split Lock | F05011-14 | 4 | |
| 22 | Nut, 1/4-20 Self-Locking Hex | F05010-9 | 4 | |
| 23 | Washer, 5/8" x 15/16" x .094 Nylon | F05011-19 | 1 | |
| 24 | Decal, Control Box 4 x Warning | 069632 | 1 | |

5.6 Sensor Assembly



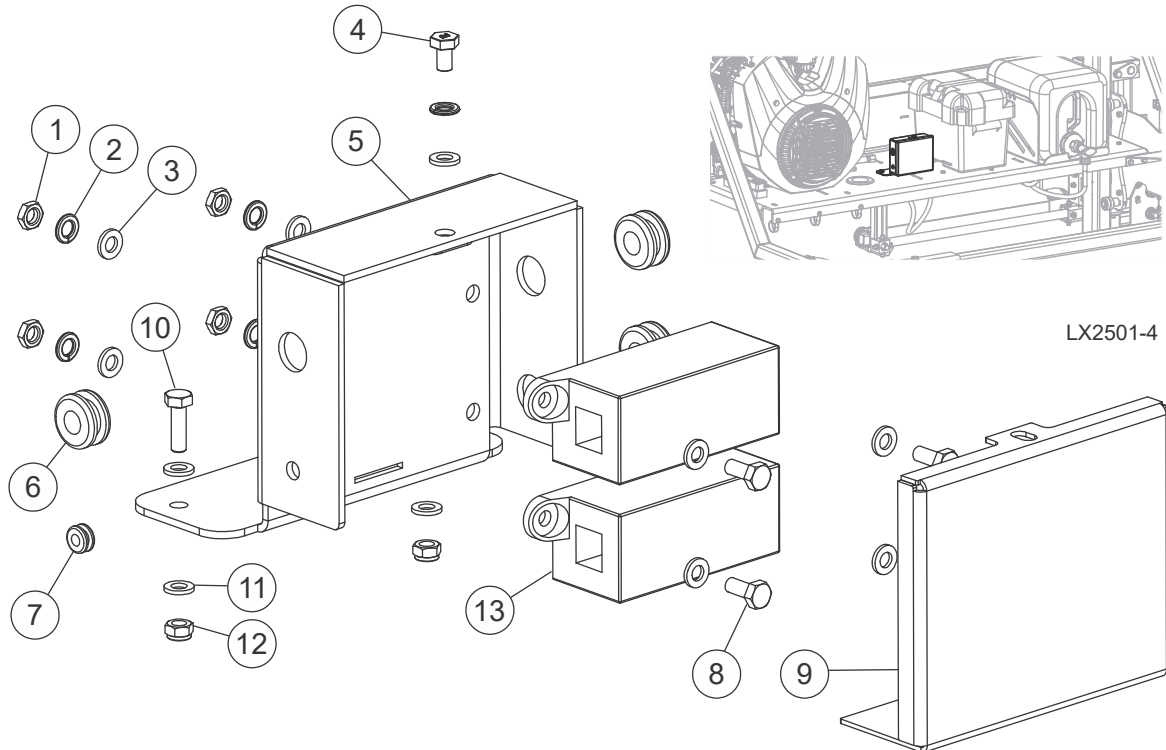
| REF | DESCRIPTION (◆ Indicates Parts Available In Assemblies Only) | PART # | QTY. | |
|-----|--|------------|------|---|
| | SENSOR ASSEMBLY, MAGNETIC POSITION | 053369 | 1 | |
| 1 | Gasket, Encoder | 006864 | 1 | |
| 2 | PCB Assembly, Encoder Sensor | 053376 | 1 | ◆ |
| 3 | Sensor Kit, Magnetic Encoder | 053387 | 1 | |
| 4 | Enclosure, Position Sensor | 053399 | 1 | |
| 5 | Lens, LED T1 Clear | 053400 | 1 | |
| 6 | Plate, SimpleSet Encoder Slide | 057853 | 1 | |
| 7 | Plate, SimpleSet Encoder Mount | 061518 | 1 | |
| 8 | Screw, 10-24 x 5/8" Unsl Indent Hex Head Machine | F05004-18 | 2 | |
| 9 | Screw, #4-40 x 5/8" SI Rnd Head Machine | F05004-49 | 2 | |
| 10 | Nut, 10-24 Hex Nylock | F05010-160 | 2 | |
| 11 | Nut, #4-40 Hex | F05010-43 | 2 | |
| 12 | Washer, #10 SAE Flat | F05011-18 | 4 | |
| 13 | Washer, #4 Split Lock | F05011-21 | 2 | |
| 14 | Bolt, #8-32 x 1/2" SI Hex Head S | F05015-18 | 2 | |
| 15 | Extension, SimpleSet Gearbox Shaft | 057852 | 1 | |

5

Replacement Parts*Sensor Assembly*

| | | | | |
|----|---|------------|---|--|
| 16 | Screw, 1/4-20 x 1/4" SH Cup Pt Set | F05005-131 | 1 | |
| 17 | Bushing, Flange 1/4" ID x 1/4" Lg | 049018 | 1 | |
| 18 | Bolt, 5/16-18 x 3/4" Hex Head Cap | F05006-5 | 4 | |
| 19 | Washer, 5/16" Split Lock | F05011-13 | 4 | |
| 20 | Washer, 5/16" SAE Flat | F05011-17 | 4 | |
| 21 | Plate, SimpleSet Mount | 057872 | 1 | |
| 22 | Decal, Encoder Bolt Warning | 074269 | 1 | |
| 23 | Magnet Assembly, Simple Set Encoder w/Hub | 065890 | 1 | |
| | CABLE ASSY, 10M M12 PUR PATCH | 073679 | 1 | |

5.7 Fuse Box

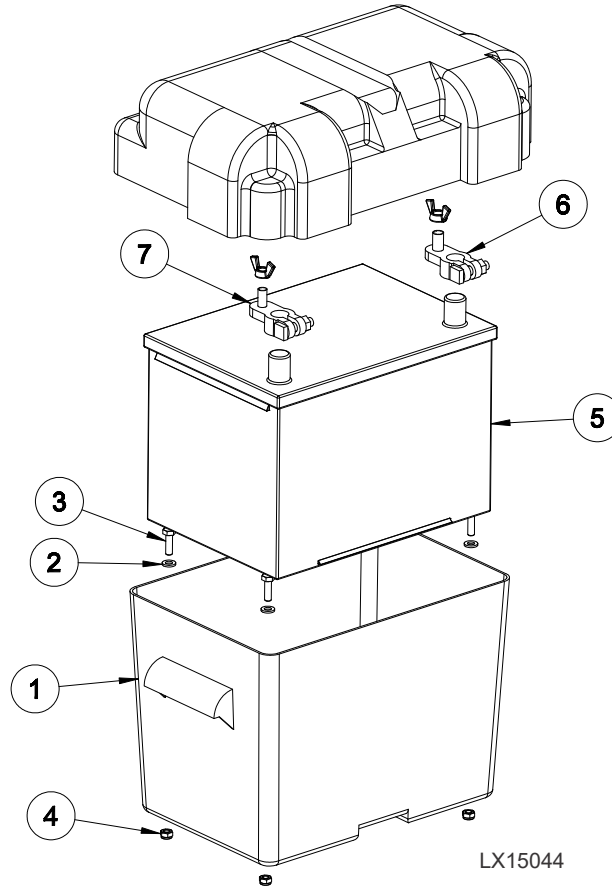


| REF | DESCRIPTION (♦ Indicates Parts Available in Assemblies Only) | PART # | QTY. |
|-----|--|------------|------|
| | Assy, LX Fuse Block | 128208 | 1 |
| 1 | Nut, M6 x 1 Hex Jam | F05010-226 | 4 |
| 2 | Washer, M6 Split Lock | F05026-2 | 5 |
| 3 | Washer, M6 Flat Class 4 | F05026-1 | 9 |
| 4 | Bolt, M6-1x10mm HH FT 8.8 Zinc | F05020-59 | 1 |
| 5 | Weldment, LX Fuse Block | 128207 | 1 |
| 6 | Grommet, Rubber 3/8 Dia | 025248 | 3 |
| 7 | Grommet, 9/32Holex3/16IDx7/16OD | 042825 | 1 |
| 8 | Bolt, M6-1 x 14 Class 8 HH | F05020-7 | 4 |
| 9 | Cover, LX Fuse Block | 128206 | 1 |
| 10 | Bolt, M6-1x20 HH Class 8 | F05020-6 | 2 |
| 11 | Washer, M6 Flat Class 4 | F05026-1 | 4 |
| 12 | Nut, M6-1.0 Nylon Lock | F05010-200 | 2 |
| 13 | Fuseholder, Mega Fuse ¹ | 052371 | 2 |
| | Fuse, 150A Mega ² | 052370-150 | 1 |
| | Fuse, 60A Mega | 052370-060 | 1 |

¹ Quantity of 1 used on electric mills.

² Not used on the electric mills.

5.8 Battery Box Assembly

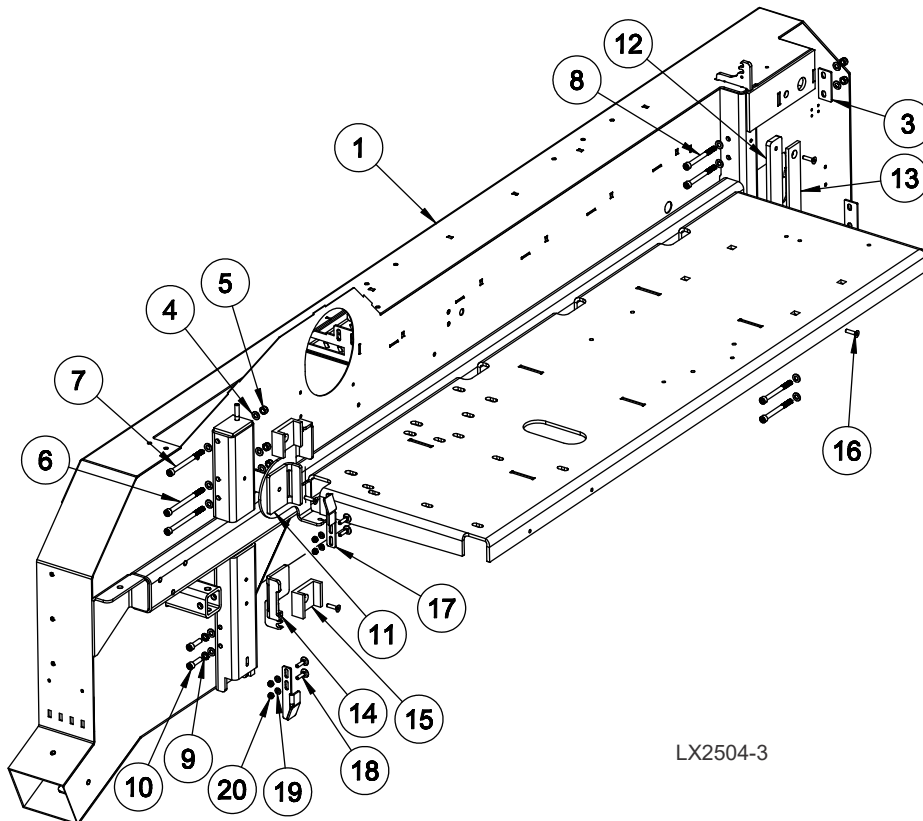


| REF | DESCRIPTION (◆ Indicates Parts Available In Assemblies Only) | PART # | QTY. |
|-----|--|---------------|----------|
| | ASSEMBLY, LX150/LX250 BATTERY BOX | 110400 | 1 |
| 1 | Box, Battery, Modified | 016413 | 1 |
| 2 | Washer, M6 Flat Class 4 | F05026-1 | 4 |
| 3 | Bolt, M6-1 x 20 Class 8 HH | F05020-6 | 4 |
| 4 | Nut, M6-1.0 Nylon Lock | F05010-200 | 4 |
| 5 | Battery, 580 CCA Deka | 079462 | 1 |
| 6 | Clamp, Pos. Battery | 033358 | 1 |
| 7 | Clamp, Neg. Battery | 033359 | 1 |
| | For mills built prior to 12/16/2019: | | |
| | Fuse, 60A ZCase ¹ | 073683 | 1 |
| | Fuse, 150A ZCase ¹ | 073684 | 1 |
| | Fuse Holder, Single ZCase ¹ | 073685 | 2 |

¹ Changed and removed fuses from inside the battery box to the fuse block assembly next to the battery box as of 12/16/2019.

SECTION 6 UP/DOWN SYSTEM

6.1 Mast Pad & Hardware

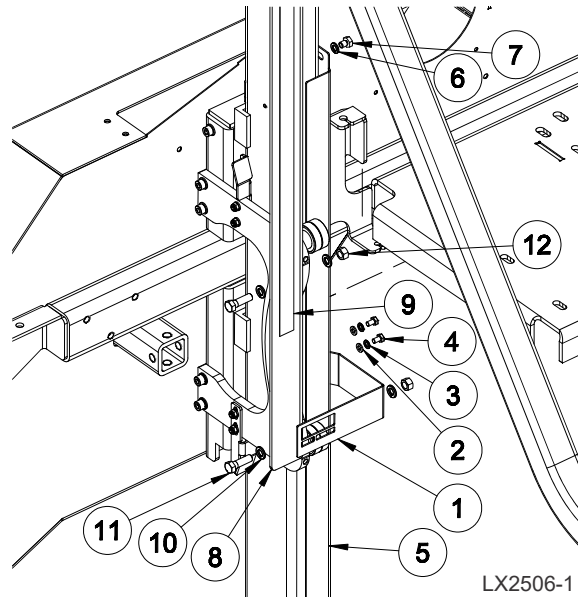


| REF | DESCRIPTION (◆ Indicates Parts Available In Assemblies Only) | PART # | QTY. |
|-----|--|------------|------|
| 1 | HEAD WELDMENT, LX250 | 011407 | 1 |
| 2 | WELDMENT, BELT ENHANCE BRKT | 011447 | 1 |
| 3 | SPACER, RIGHT HEAD MOUNTING | 011444 | 2 |
| 4 | WASHER, M8 FLAT | F05026-4 | 14 |
| 5 | NUT, M8-8-B, HEX, NYLON LOCK ZINC | F81032-2 | 5 |
| 6 | SCREW, M8-1.25X110MM SHCS | F05021-39 | 2 |
| 7 | SCREW, M8-1.25X100MM SHCS | F05021-38 | 1 |
| 8 | SCREW, M8-1.25X85MM SHCS | F05021-37 | 4 |
| 9 | WASHER, M8 SPRING LOCK ZINC | F05011-130 | 2 |
| 10 | SCREW, M8-1.25 X 30 SHC | F05021-1 | 2 |
| 11 | SHIM, MAST STABILIZING | 011238 | 1 |
| 12 | PLATE, LX150 SLIDE SPACER | 110294 | 1 |
| 13 | SLIDE, LX150 IDLE SIDE UPRIGHT | 011140 | 1 |
| 14 | SHIM, CHAIN MOUNTING | 011164 | 1 |
| 15 | GUIDE, LX150 UPRIGHT | 011110 | 2 |

6**Up/Down System**
Mast Pad & Hardware

| | | | | |
|----|------------------------------------|------------|---|--|
| 16 | SCREW, M6X1X25MM FHS | F05004-266 | 4 | |
| 17 | BRACKET, LOWER LIMIT SWITCH | 011323 | 2 | |
| 18 | BOLT, M6X25-8.8 CARRIAGE HEAD ZINC | F81001-20 | 4 | |
| 19 | WASHER, M6 FLAT CLASS 4 | F05026-1 | 4 | |
| 20 | NUT, M6-1.0 NYLON LOCK | F05010-200 | 4 | |

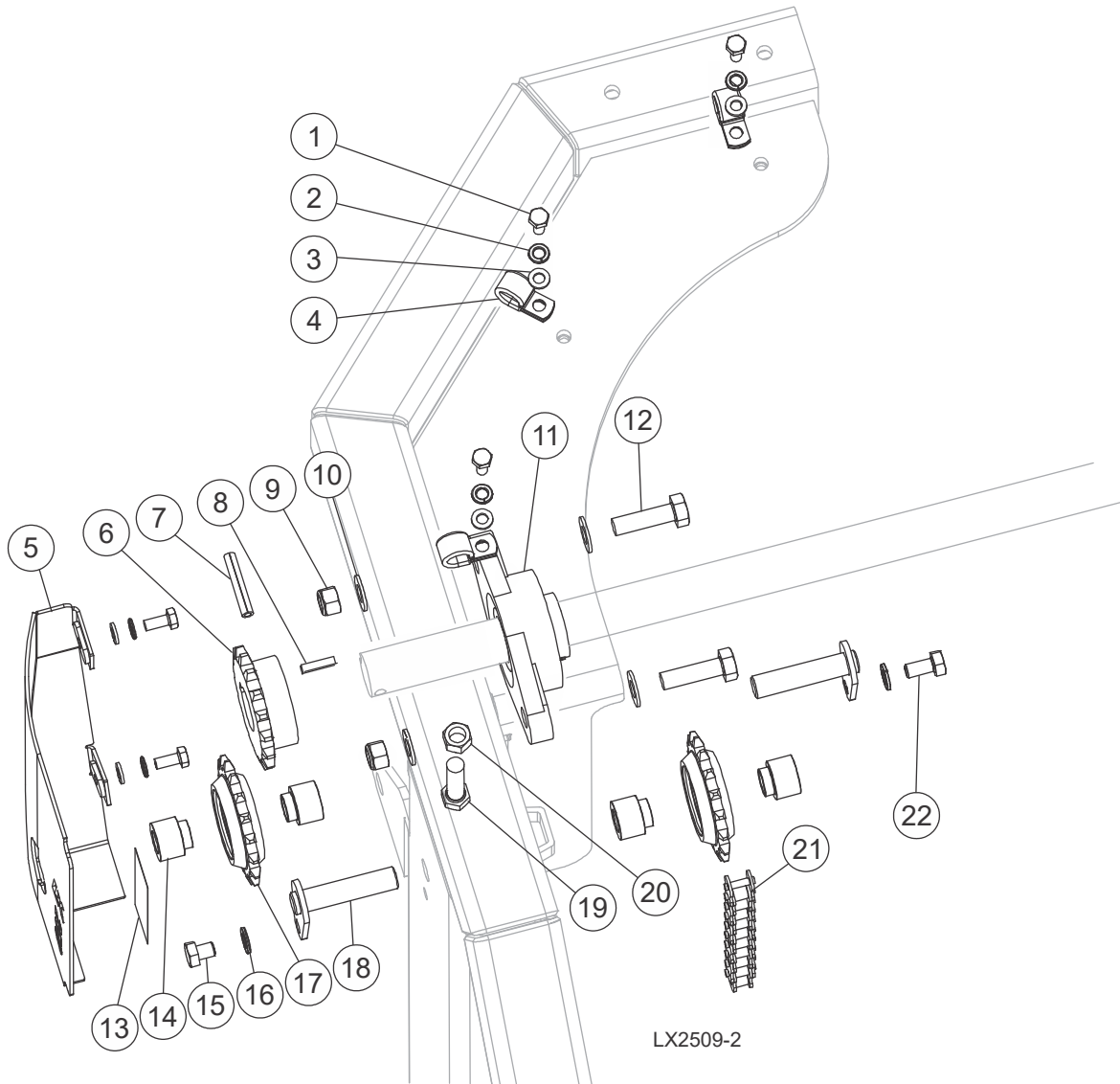
6.2 Blade Height Scales & Mast Angles



| REF | DESCRIPTION (◆ Indicates Parts Available In Assemblies Only) | PART # | QTY. |
|-----|--|------------|------|
| 1 | PLATE, SIGHT GAUGE | 108025 | 1 |
| 2 | WASHER, M6 FLAT CLASS 4 | F05026-1 | 4 |
| 3 | WASHER, M6 SPLIT LOCK | F05026-2 | 4 |
| 4 | BOLT, M6-1X10MM HH FT 8.8 ZINC | F05020-59 | 2 |
| 5 | ANGLE, MAST TUBE STAINLESS | 011430 | 1 |
| 6 | WASHER, 8MM SPLIT LOCK, ZN | F05011-45 | 1 |
| 7 | BOLT, M8-1.25X20MM HHC | F05021-51 | 1 |
| 8 | PLATE, BLADE HEIGHT | 011473 | 1 |
| 9 | DECAL, LX250 INCH SCALE | 128064 | 1 |
| 10 | WASHER, 3/8 SPLIT LOCK | F05011-4 | 4 |
| 11 | BOLT, 3/8-16X1 1/4 FT HH GR5 | F05007-123 | 2 |
| 12 | NUT, 3/8-16 HEX | F05010-1 | 2 |

6 Up/Down Assembly, Drive Side

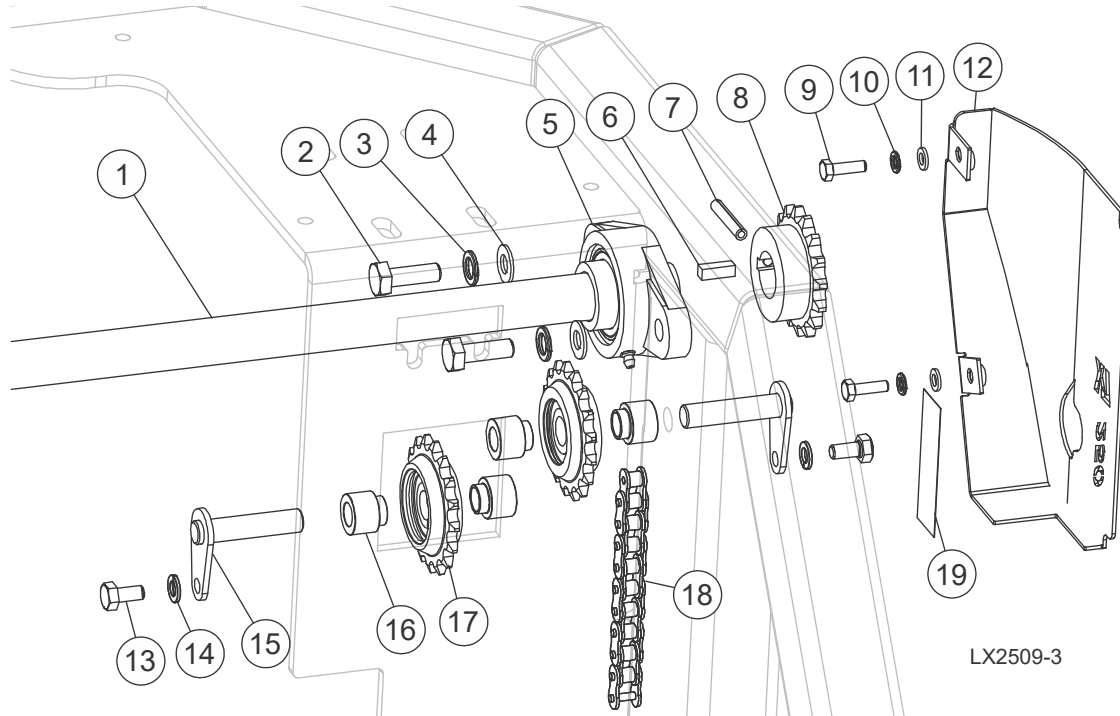
6.3 Up/Down Assembly, Drive Side



| REF | DESCRIPTION (♦ Indicates Parts Available in Assemblies Only) | PART # | QTY. |
|-----|--|------------|------|
| 1 | Bolt, M6-1 x 20 Class 8 HH | F05020-6 | 5 |
| 2 | Washer, M6 Split Lock | F05026-2 | 5 |
| 3 | Washer, M6 Flat Class 4 | F05026-1 | 5 |
| 4 | Clamp, 1/2 IDx9/32 Mounting Hole Coated | 011295 | 3 |
| 5 | Weldment, Left Sprocket Guard | 011439 | 1 |
| 6 | Sprocket, 40B16x1 | 007311 | 1 |
| 7 | Pin, 1/4 x 1-1/2 Roll | F05012-125 | 1 |
| 8 | Key, 1/4 Sqx3/4 Long | S03167 | 1 |

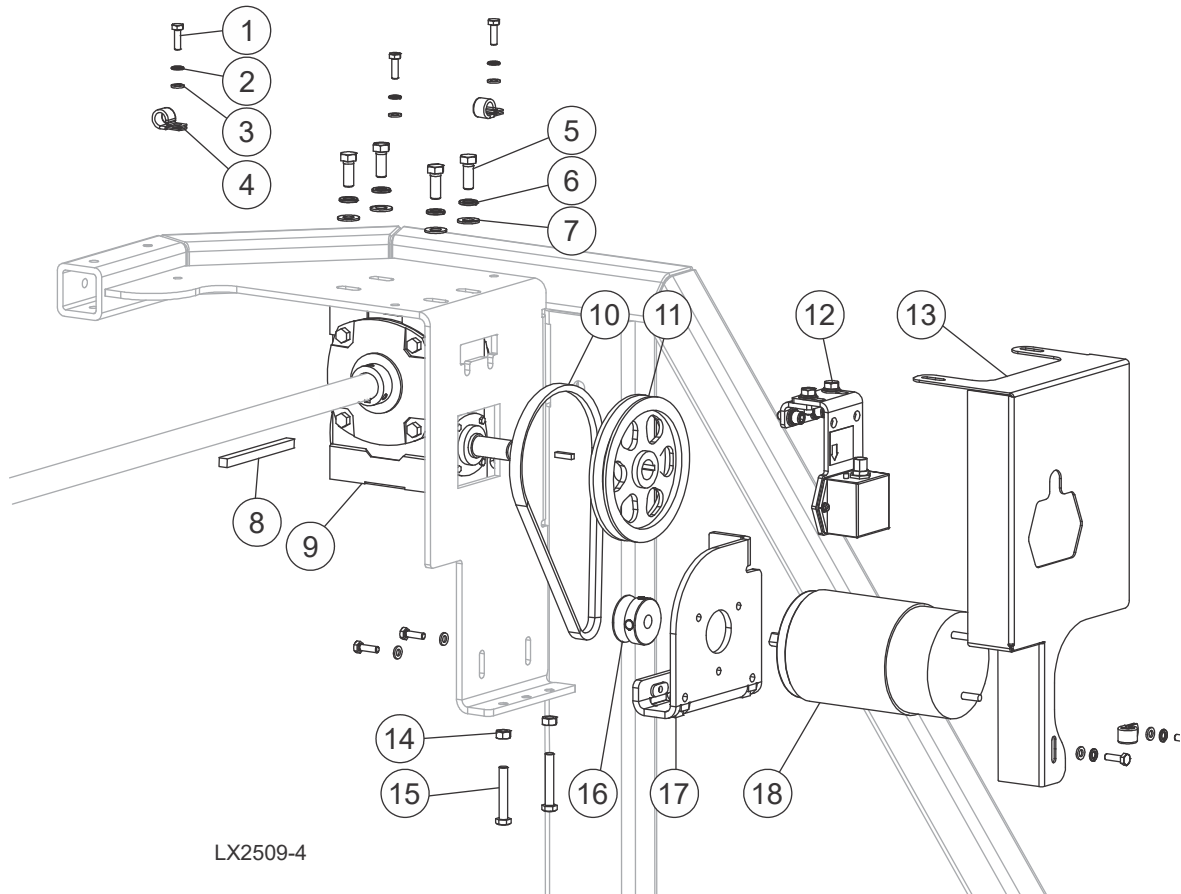
| REF | DESCRIPTION (♦ Indicates Parts Available in Assemblies Only) | PART # | QTY. | |
|-----|--|------------|------|--|
| 9 | Nut, M10-1.50 Hex Nyl Lock | F05004-270 | 2 | |
| 10 | Washer, M10 Flat SAE | F05011-134 | 4 | |
| 11 | Bearing, 1 Flanged, VF2S 216 | 038124 | 1 | |
| 12 | Bolt, M10-1.5 x35 HH Class 8.8 | F05022-18 | 2 | |
| 13 | Decal, 3x1 Orange Vinyl | 011284 | 1 | |
| 14 | Bushing, Idler Spacing | 011176 | 4 | |
| 15 | Bolt, M8-1.25x10mm HHC | F05021-51 | 1 | |
| 16 | Washer, M8 Split Lock | F05011-45 | 2 | |
| 17 | Sprocket Assy, #40/#41 Chain, 17T -> | 016366 | 2 | |
| 18 | Weldment, 1/2x2-1/8 Idler Pin | 011213 | 2 | |
| 19 | Bolt, 3/8-16x1 3/4 FT HH | F05007-19 | 1 | |
| 20 | Nut, 3/8-16 Hex | F05010-1 | 1 | |
| 21 | Chain, #40x324p (162in) | 128037 | 1 | |
| 22 | Bolt, M8-1.25x16 HH Zinc | F05004-47 | 1 | |

6.4 Up/Down Assembly, Idle Side



| REF | DESCRIPTION (♦ Indicates Parts Available in Assemblies Only) | PART # | QTY. |
|-----|--|------------|------|
| 1 | Shaft, LX250 Up/Dn | 011405 | 1 |
| 2 | Bolt, M10-1.5x30 HH Class 8 | F05022-3 | 2 |
| 3 | Washer, 10MM Split Lock | F05011-88 | 2 |
| 4 | Washer, M10 Flat | F05011-134 | 2 |
| 5 | Bearing, 1 Flanged, VF2S 216 | 038124 | 1 |
| 6 | Key, 1/4 Sqx3/4 Long | S03167 | 1 |
| 7 | Pin, 1/4 x 1-1/2 Roll | F05012-125 | 1 |
| 8 | Sprocket, 40B16x1 | 007311 | 1 |
| 9 | Bolt, M6-1x20 HH Class 8 | F05020-6 | 2 |
| 10 | Washer, M6 Split Lock | F05026-2 | 2 |
| 11 | Washer, M6 Flat Class 4 | F05026-1 | 2 |
| 12 | Wldmnt, Right Sprocket Guard | 011443 | 1 |
| 13 | Bolt, M8-1.25x16 HH Zinc | F05004-47 | 2 |
| 14 | Washer, 8mm Split Lock, Zn | F05011-45 | 2 |
| 15 | Wldmnt, 1/2x2-1/8 Idler Pin | 011213 | 2 |
| 16 | Bushing, Idler Spacing | 011176 | 4 |
| 17 | Sprocket Assy, #40/#41 Chain, 17T | 016366 | 2 |
| 18 | Chain, #40x324p (162in) | 128037 | 1 |
| 19 | Decal, 3x1 Orange Vinyl | 011284 | 1 |

6.5 Up/Down Gearbox Assembly

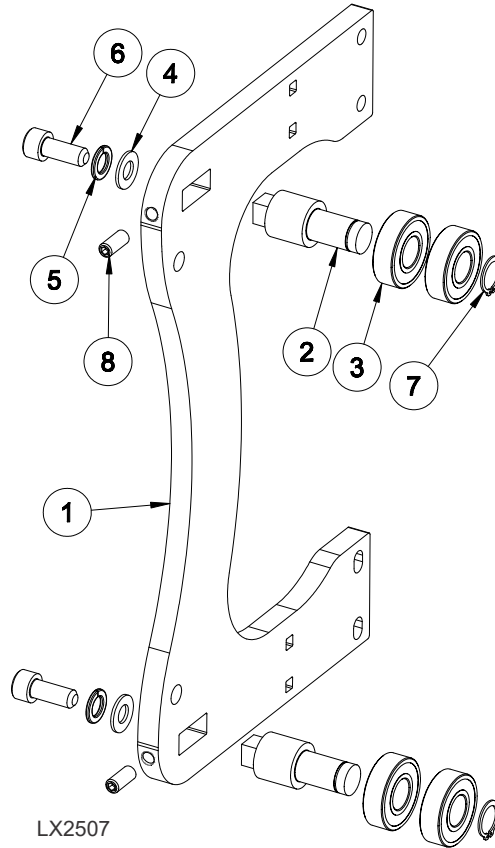


| REF | DESCRIPTION (♦ Indicates Parts Available in Assemblies Only) | PART # | QTY. |
|-----|--|------------|------|
| 1 | Bolt, M6-1 x 20 Class 8 HH | F05020-6 | 7 |
| 2 | Washer, M6 Split Lock | F05026-2 | 7 |
| 3 | Washer, M6 Flat Class 4 | F05026-1 | 5 |
| 4 | Clamp, 1/2 IDx9/32 Mounting Hole Coated | 011295 | 3 |
| 5 | Bolt, 3/8-16x1 Gr5 HH | F05007-87 | 4 |
| 6 | Washer, 3/8 Split Lock | F05011-4 | 4 |
| 7 | Washer, 3/8 Flat SAE | F05011-3 | 4 |
| 8 | Key, 1/4x4 1/4 | S22440 | 1 |
| 9 | Gearbox, 60:1 Thru Shaft | 011317 | 1 |
| 10 | Belt, 4L245 | 038459 | 1 |
| 11 | Sheave, 5.45 OD 3/4 Bore 4L | 066781 | 1 |
| 12 | Sensor Assy, Magnetic Position (See Section 5.6) | 053369 | 1 |
| 13 | Guard, LX150 Up/Dn, SSW | 110701 | 1 |
| 14 | Nut, M8-1.25 Free Zinc | F05010-162 | 2 |
| 15 | Bolt, M8x50 8.8 HH FT Zinc | F81002-19 | 2 |

6*Up/Down Gearbox Assembly*

| REF | DESCRIPTION (♦ Indicates Parts Available in Assemblies Only) | PART # | QTY. | |
|-----|--|--------|------|--|
| 16 | Sheave, 1 3/4 Feed Motor | S09579 | 1 | |
| 17 | Wldmnt, DC Up/Dn Motor Adjust | 011300 | 1 | |
| 18 | Motor, 1/2hp 12VDC, Current Applications | 006747 | 1 | |

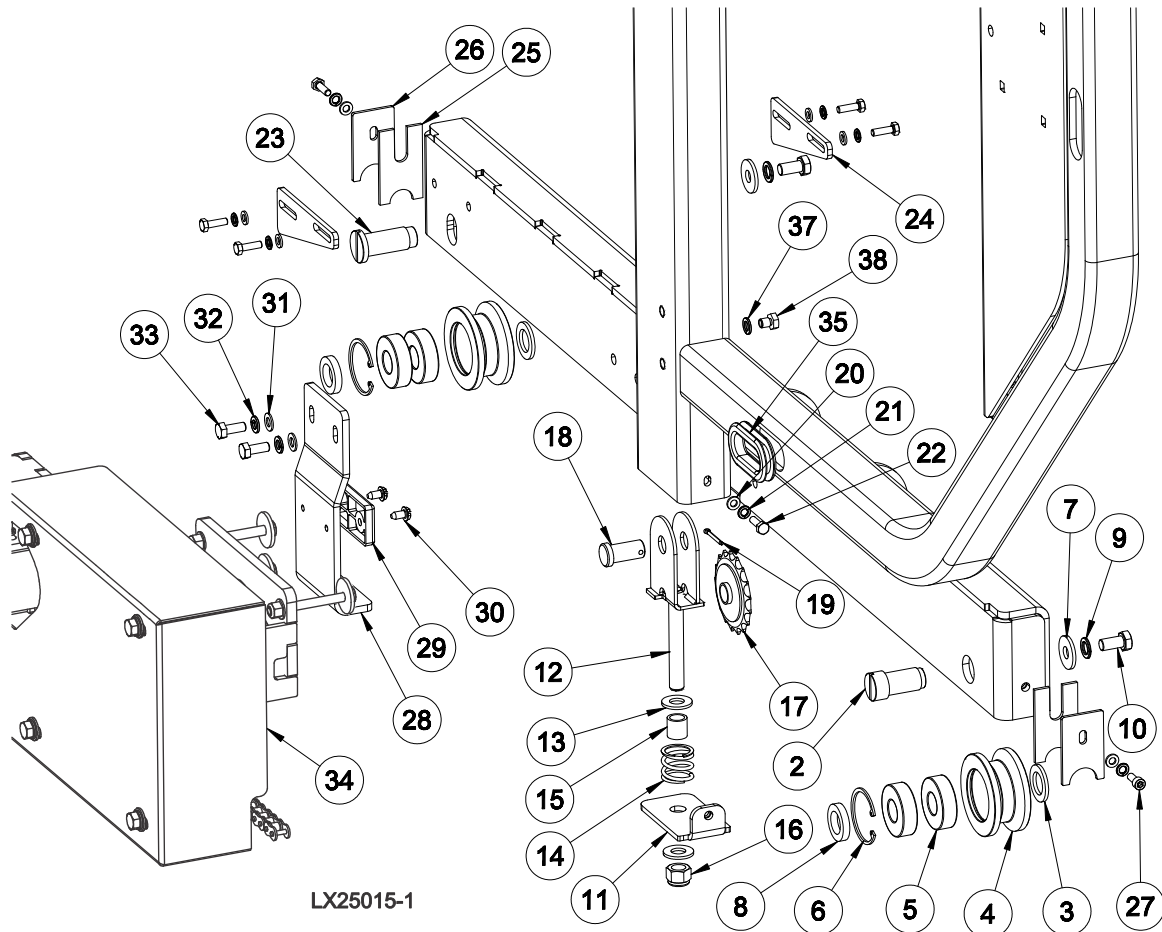
6.6 Head Mounting Assembly



| REF | DESCRIPTION (◆ Indicates Parts Available In Assemblies Only) | PART # | QTY. |
|-----|--|---------------|----------|
| | ASSEMBLY, HEAD MOUNTING | 011459 | 2 |
| 1 | Guide, LX150 Mast | 011009 | 1 |
| 2 | Shaft, Head Hold Down | 011472 | 2 |
| 3 | Bearing, 6203-2NSL 17mm SRI-2 ABEC-1 | P06030-2 | 4 |
| 4 | Washer, M10 Flat | F05011-134 | 2 |
| 5 | Washer, 10MM Split Lock | F05011-88 | 2 |
| 6 | Bolt, M10-1.5 x 25 SHC | F05022-12 | 2 |
| 7 | Ring, 17mm OR | F04254-16 | 2 |
| 8 | Screw, M8-1.25 x20 SHFP Set | F05021-7 | 2 |

SECTION 7 FEED SYSTEM & TRACK ROLLERS

7.1 Track Rollers and Wipers (Drive Side)



| REF | DESCRIPTION (◆ Indicates Parts Available In Assemblies Only) | PART # | QTY. |
|-----|--|------------|------|
| 1 | UPRIGHT WELDMENT RH, LX250 | 113961 | 1 |
| 2 | SHAFT, LX150 ROLLER | 515018 | 1 |
| 3 | WASHER, LX150 THIN ROLLER | 011351 | 2 |
| | ROLLER ASSEMBLY, LX150 | 515015 | 2 |
| 4 | Roller, LX150 | 514889 | 1 |
| 5 | Bearing, 6204 2RRS-CX Rolling | 088447 | 2 |
| 6 | Ring, Retaining W 47, PN-81/M-85111 | 089653 | 1 |
| 7 | SPACER, LX150 HEIGHT ADJUST | 088787 | 2 |
| 8 | WASHER, LX150 THICK ROLLER | 011352 | 2 |
| 9 | WASHER, 10MM SPLIT LOCK | F05011-88 | 2 |
| 10 | BOLT, M10-1.50X20MM HEX HEAD FT 8.8 | F05004-207 | 2 |

Bed Frame Assembly

Track Rollers and Wipers (Drive Side)

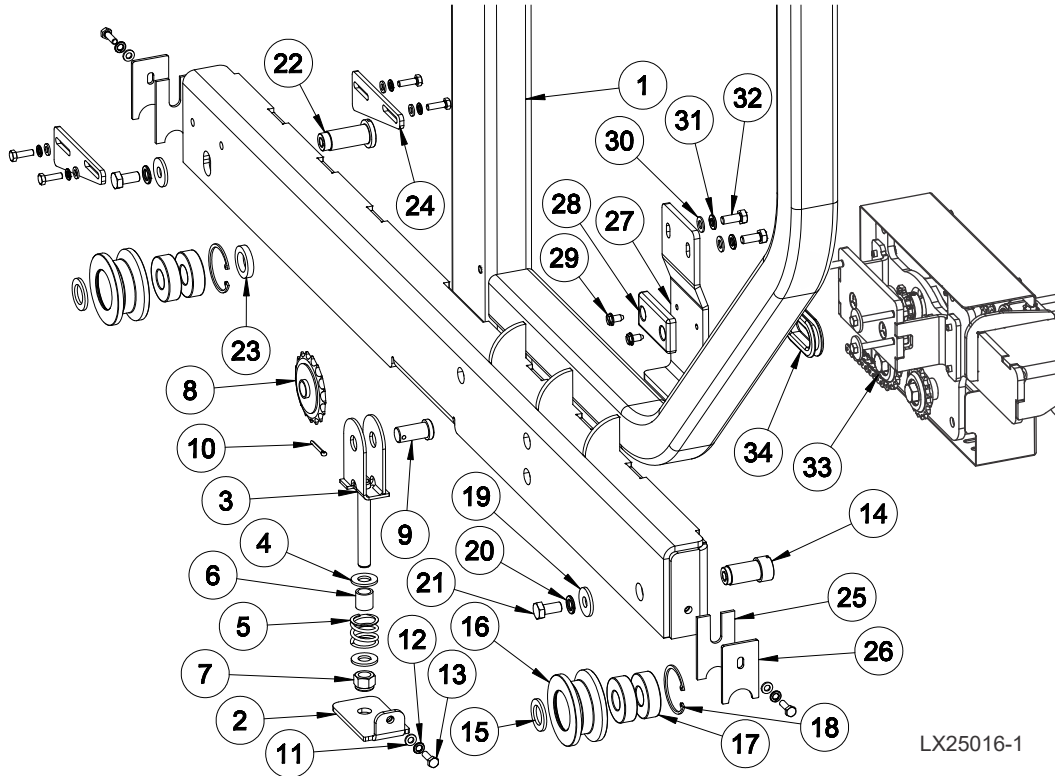
7

| | | | | |
|----|--|------------|---|--|
| 11 | WELDMENT, TENSION SPROCKET MOUNTING | 011372 | 1 | |
| | ASSEMBLY, LX150 UP/DN CHAIN TENSION | 011370 | 1 | |
| 12 | Weldment, LX150 Up/Dn Chain Tension | 011369 | 1 | |
| 13 | Washer, 1/2 SAE Flat | F05011-2 | 2 | |
| 14 | Spring, 1ODx1Longx.125Wire Comp | 016516 | 1 | |
| 15 | Spacer, Up/Dn Chain Tensioner | 016515 | 1 | |
| 16 | Nut, 1/2-13 Nyl Hex Lock | F05010-8 | 1 | |
| 17 | Sprocket, #40 Idler 17T 5/8ID | P04333 | 1 | |
| 18 | Pin, 5/8x1 Usable Lg. Clevis | F05012-159 | 1 | |
| 19 | Pin, 1/8x1 Cotter | F05012-1 | 1 | |
| 20 | WASHER, M6 FLAT CLASS 4 | F05026-1 | 7 | |
| 21 | WASHER, M6 SPLIT LOCK | F05026-2 | 7 | |
| 22 | BOLT, M6-1X20 HEX HEAD CLASS 8 | F05020-6 | 6 | |
| 23 | SHAFT, LX100/150 ADJUSTMENT | 515101 | 1 | |
| 24 | PLATE, LX150 HEIGHT ADJUST | 516508-1 | 2 | |
| 25 | WIPER | M04113 | 2 | |
| 26 | PLATE, LX250 RAIL WIPER | 034229 | 2 | |
| 27 | BOLT, M6-1.0X16MM SHCS | F05004-206 | 1 | |
| | ASSEMBLY, LX150 MAST SAFETY | 011120 | 1 | |
| 28 | Plate, LX150 Mast Safety | 011119 | 1 | |
| 29 | Pad, Catapillar Track | P13576 | 1 | |
| 30 | Bolt, 1/4-20x1/2 SI Hex Head | F05015-1 | 2 | |
| 31 | Washer, M8 Flat | F05026-4 | 2 | |
| 32 | Washer, 8mm Split Lock, Zn | F05011-45 | 2 | |
| 33 | Bolt, M8-1.25x20 Class 8 Hex Head | F05021-2 | 2 | |
| 34 | ASSEMBLY, LX250 POWER FEED (/See Section 7.3 for parts) | 110998 | 1 | |
| 35 | GROMMET, 1-3/4" ID X 2" HOLE RUBBER | 011269 | 2 | |
| 36 | SWITCH, 90x LIMIT | 114013 | 1 | |
| 37 | WASHER, M8 SPRING LOCK ZINC | F05011-130 | 1 | |
| 38 | BOLT, M8X10MM HEX HEAD FT, CROWNED HEAD | F81002-47 | 1 | |

7 Feed System & Track Rollers

Track Roller And Wipers (Idle Side)

7.2 Track Roller And Wipers (Idle Side)



LX25016-1

| REF | DESCRIPTION (◆ Indicates Parts Available In Assemblies Only) | PART # | QTY. |
|-----|--|------------|------|
| 1 | UPRIGHT WELDMENT LH, LX250 | 113967 | 1 |
| 2 | WELDMENT, TENSION SPROCKET MOUNTING | 011372 | 1 |
| | ASSEMBLY, LX150 UP/DN CHAIN TENSION | 011370 | 1 |
| 3 | Weldment, LX150 Up/Dn Chain Tension | 011369 | 1 |
| 4 | Washer, 1/2 SAE Flat | F05011-2 | 2 |
| 5 | Spring, 1ODx1Longx.125Wire Comp | 016516 | 1 |
| 6 | Spacer, Up/Dn Chain Tensioner | 016515 | 1 |
| 7 | Nut, 1/2-13 Nyl Hex Lock | F05010-8 | 1 |
| 8 | Sprocket, #40 Idler 17T 5/8ID | P04333 | 1 |
| 9 | Pin, 5/8x1 Usable Lg. Clevis | F05012-159 | 1 |
| 10 | Pin, 1/8x1 Cotter | F05012-1 | 1 |
| 11 | WASHER, M6 FLAT CLASS 4 | F05026-1 | 8 |
| 12 | WASHER, M6 SPLIT LOCK | F05026-2 | 8 |
| 13 | BOLT, M6-1X20 HEX HEAD CLASS 8 | F05020-6 | 7 |
| 14 | SHAFT, LX150 ROLLER | 515018 | 1 |
| 15 | WASHER, LX150 THIN ROLLER | 011351 | 2 |
| | ROLLER ASSEMBLY, LX150 | 515015 | 2 |
| 16 | Roller, LX150 | 514889 | 1 |

Feed System & Track Rollers

Track Roller And Wipers (Idle Side)

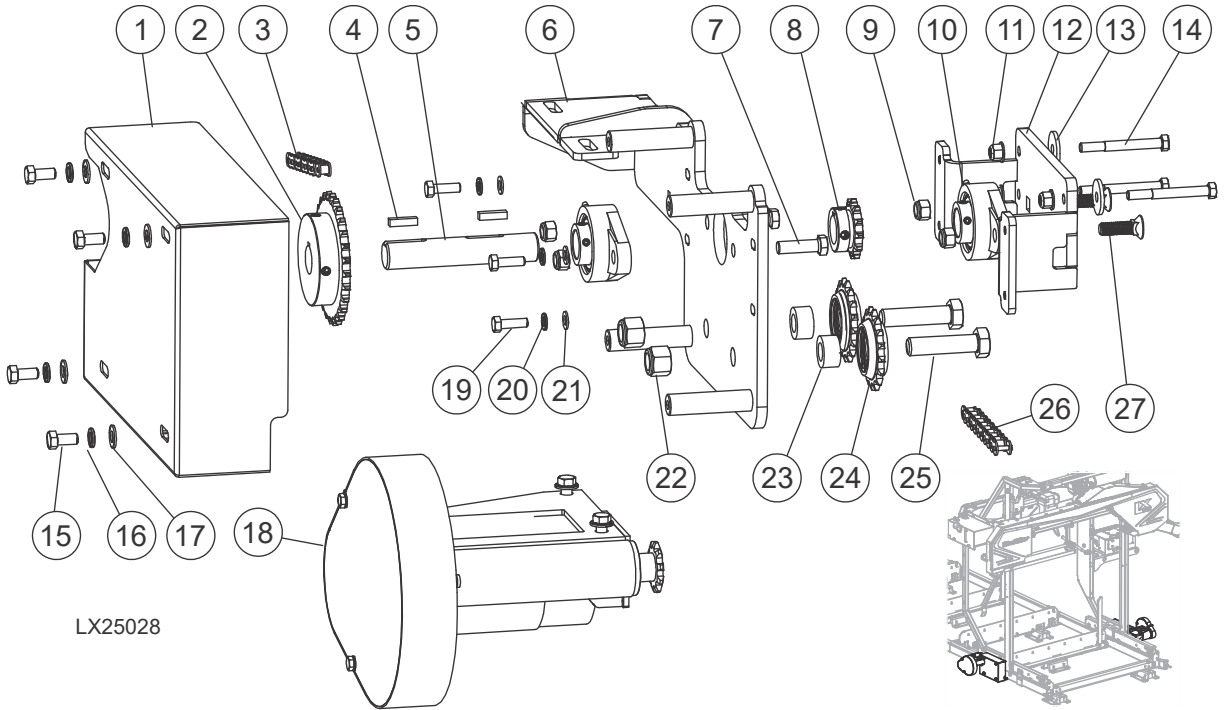
7

| | | | | |
|----|--|------------|---|--|
| 17 | Bearing, 6204 2RRS-CX Rolling | 088447 | 2 | |
| 18 | Ring, Retaining W 47, PN-81/M-85111 | 089653 | 1 | |
| 19 | SPACER, LX150 HEIGHT ADJUST | 088787 | 2 | |
| 20 | WASHER, 10MM SPLIT LOCK | F05011-88 | 2 | |
| 21 | BOLT, M10-1.50X20MM HEX HEAD FT 8.8 | F05004-207 | 2 | |
| 22 | SHAFT, LX100/150 ADJUSTMENT | 515101 | 1 | |
| 23 | WASHER, LX150 THICK ROLLER | 011352 | 1 | |
| 24 | PLATE, LX150 HEIGHT ADJUST | 516508-1 | 2 | |
| 25 | WIPER | M04113 | 2 | |
| 26 | PLATE, LX250 RAIL WIPER | 034229 | 2 | |
| | ASSEMBLY, LX150 MAST SAFETY | 011120 | 1 | |
| 27 | Plate, LX150 Mast Safety | 011119 | 1 | |
| 28 | Pad, Catapillar Track | P13576 | 1 | |
| 29 | Bolt, 1/4-20x1/2 SI Hex Head | F05015-1 | 2 | |
| 30 | Washer, M8 Flat | F05026-4 | 2 | |
| 31 | Washer, 8mm Split Lock, Zn | F05011-45 | 2 | |
| 32 | Bolt, M8-1.25x20 Class 8 Hex Head | F05021-2 | 2 | |
| 33 | ASSEMBLY, LX250 POWER FEED (See Section 7.3 for parts) | 110998 | 1 | |
| 34 | GROMMET, 1-3/4" ID X 2" HOLE RUBBER | 011269 | 1 | |

7 Feed System & Track Rollers

Power Feed Assembly

7.3 Power Feed Assembly



| REF | DESCRIPTION (◆ Indicates Parts Available in Assemblies Only) | PART # | QTY. |
|-----|--|---------------|------|
| | ASSY, LX250 COMPLETE PF | 110998 | 2 |
| 1 | Plate, LX250 Power Feed Cover | N / A | 1 ◆ |
| 2 | Sprocket, 40B28x1 | 110982 | 1 |
| 3 | Chain, #40x39 Pitch (19 1/2") | 063184 | 1 |
| 4 | Key, 1/4inX 1in | S21486 | 2 |
| 5 | Shaft, LX250 PF | N / A | 1 ◆ |
| 6 | Weldment, LT250 PF Front Mnt | 110999 | 1 |
| 7 | Bolt, 7/16-14x1 1/2 HH FT Gr5 | F05007-138 | 2 |
| 8 | Sprocket, 40B12x1 | 110981 | 1 |
| 9 | Nut, 7/16-14 Nylock | F05010-135 | 4 |
| 10 | Bearing, 1 Flanged, VF2S 216 | 038124 | 2 |
| 11 | Nut, M8 x 1.25 Flanged Nylock | F05027-44 | 3 |
| 12 | Weldment, LT250 PF Mounting | 110988 | 1 |
| 13 | Washer, 5/16 ID x 1/8 Fender | F05011-105 | 3 |
| 14 | Bolt, M8-1.25x75mm HH Class 8.8 | F05021-34 | 3 |
| 15 | Bolt, 3/8-16x3/4 HH Gr5 | F05007-118 | 4 |
| 16 | Washer, 3/8 Split Lock | F05011-4 | 4 |
| 17 | Washer, 3/8 Flat SAE | F05011-3 | 4 |
| 18 | Assy, LX250 PF Drive (See Section 7.4) | 110984 | 1 |

Feed System & Track Rollers

Power Feed Assembly

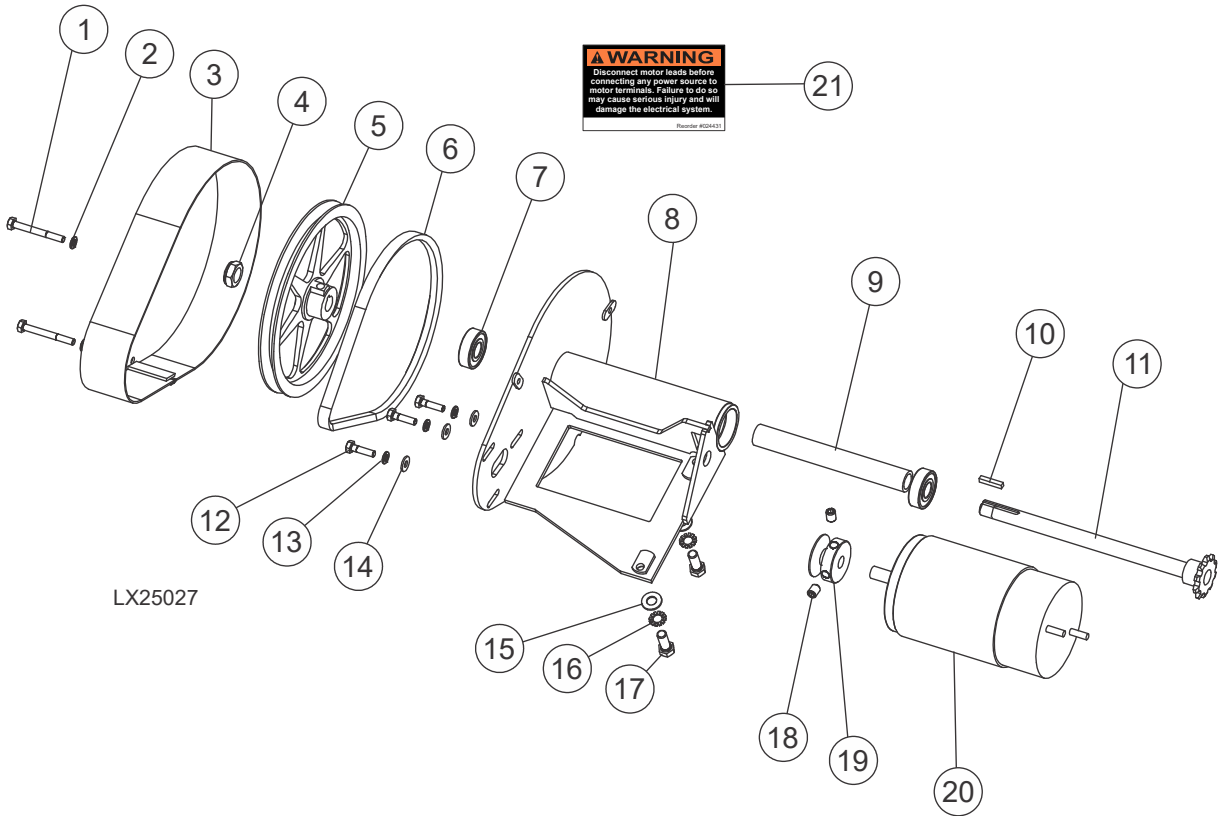
7

| REF | DESCRIPTION (♦ Indicates Parts Available in Assemblies Only) | PART # | QTY. | |
|-----|--|------------|------|---|
| 19 | Bolt, M8x1.25x25mm C/S 8.8 Din 933 HH | F05004-40 | 4 | |
| 20 | Washer, M8 Split Lock | F05011-45 | 4 | |
| 21 | Washer, M8 Flat | F05026-4 | 4 | |
| | Idler Assy, Lower Feed | N / A | 2 | ♦ |
| 22 | Nut, 5/8-18 Hex Nyl Lock | F05010-71 | 1 | |
| 23 | Spacer, 1.13ODx0.64IDx0.60Long | 115289 | 1 | |
| 24 | Sprocket Assy, #40/#41 Chain, 17T -> | 016366 | 1 | |
| 25 | Bolt, 5/8-18x2 1/2 HH FT GR 5 ZNC | F05009-99 | 1 | |
| 26 | Chain, #40x460 Pitches (230") | 115290 | 1 | |
| 27 | Bolt, 7/16-14x1-1/2 FH Gr5 Plow | F05007-263 | 2 | |

7 Feed System & Track Rollers

Power Feed Assembly

7.4 Power Feed Assembly



| REF | DESCRIPTION (♦ Indicates Parts Available in Assemblies Only) | PART # | QTY. |
|-----|--|---------------|------|
| | ASSY, LX250 PF DRIVE | 110984 | |
| 1 | Screw, 1/4-20x2 1/4 HHC | F05005-32 | 2 |
| 3 | Cover Weldment, power Feed Ptd | W11613 | 1 |
| 4 | Nut, 5/8-18 Nyl Jam | N / A | 1 ♦ |
| 5 | Sheave, 8Ax5/8 | P04343 | 1 |
| 6 | Belt, 4L280 | P04031 | 1 |
| 7 | Bearing, 5/8x1.5748x.4724 | P06030-1 | 2 |
| 8 | Weldment, PF Motor Mount, LT35 | 066991 | 1 |
| 9 | Spacer, Bearing, Power Feed | 079799 | 1 |
| 10 | Key, 3/16x1 Sq | N / A | 1 ♦ |
| 11 | Shaft Weldment, Power Feed, w/o Key | N / A | 1 ♦ |
| 12 | Bolt, 1/4-20x1 HH Gr5 | F05005-101 | 3 |
| 13 | Washer, 1/4 Split Lock | F05011-14 | 5 |
| 14 | Washer, 1/4 SAE Flat | F05011-11 | 3 |
| 15 | Washer, 3/8 Flat SAE | F05011-3 | 2 |
| 16 | Sheave, 1 3/4 Feed Motor | S09579 | 1 |

Feed System & Track Rollers

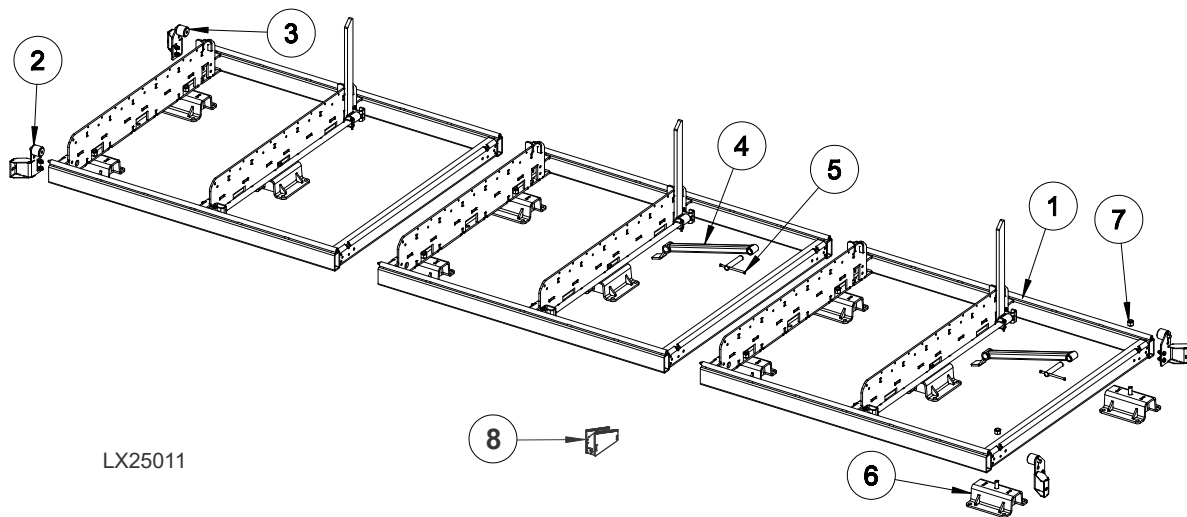
Power Feed Assembly

7

| REF | DESCRIPTION (♦ Indicates Parts Available in Assemblies Only) | PART # | QTY. | |
|-----|--|-----------|------|--|
| 16 | Washer, 3/8 Star External | F05011-36 | 2 | |
| 17 | Bolt, 3/8-16x1 HH Gr8 | F05007-82 | 2 | |
| 18 | Screw, 3/8-16x1/2 SH Cup Pt Set | F05007-12 | 2 | |
| 20 | Motor, 1/2hp 12VDC, Current Applications | 006747 | 1 | |
| 21 | Decal, Disconnect Motor Leads Warning | 024431 | 1 | |

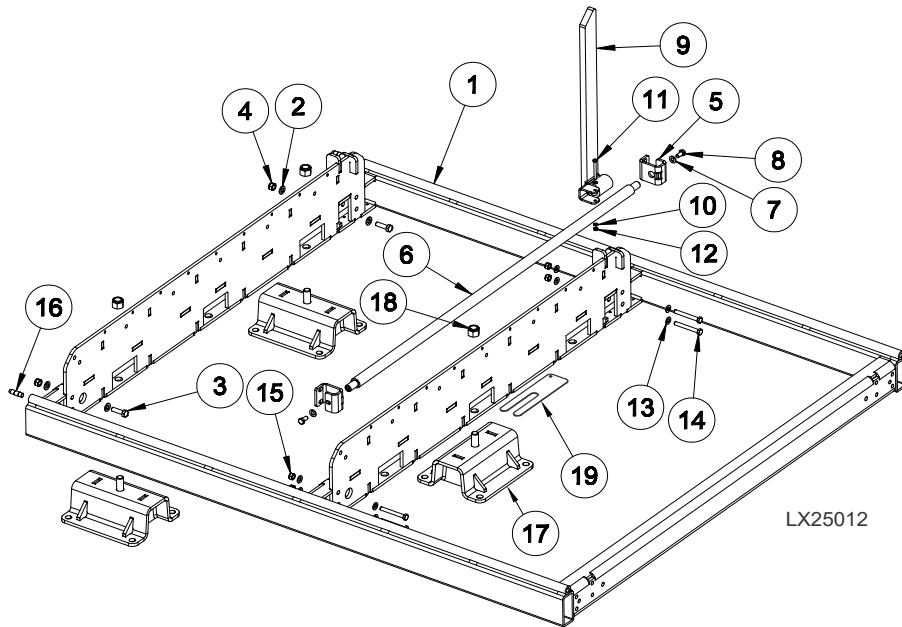
SECTION 8 BED FRAME ASSEMBLY

8.1 Bed Frame Assembly



| REF | DESCRIPTION (◆ Indicates Parts Available In Assemblies Only) | PART # | QTY. |
|-----|--|-----------------|------|
| | BED ASSEMBLY, LX250 | 115072 | 1 |
| 1 | Bed, Bed Module 1 (See Section 8.2) | 115073 | 3 |
| 2 | Bed, End Stop Right (See Section 8.3) | 115106 | 2 |
| 3 | Bed, End Stop Left (See Section 8.4) | 115112 | 2 |
| 4 | Weldment, Log Clamp | 115097 | 2 |
| 5 | Screw Assembly, Clamp | 071350 | 2 |
| 6 | Foot Weldment, LX250 Bed | 115132 | 2 |
| 7 | Nut, 3/4-10 Nylon Lock | F05010-103 | 2 |
| 8 | WEDGE (OPTIONAL) | 515413-1 | 1 |

8.2 Bed Section Assembly



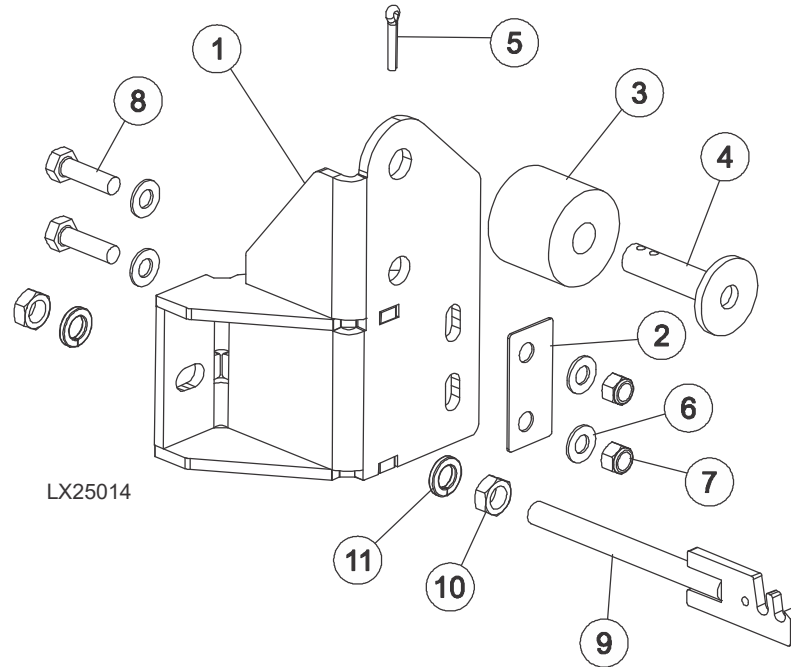
| REF | DESCRIPTION (◆ Indicates Parts Available In Assemblies Only) | PART # | QTY. |
|-----|--|---------------|------|
| | ASSEMBLY, BED MODULE 1 | 115073 | 1 |
| 1 | Weldment, Bed Module 1 | 115074 | 1 |
| 2 | Washer, M12 Flat Zinc | F81056-1 | 4 |
| 3 | Bolt, M12x40 8.8 Hex Head Full Thr.zinc | F81004-4 | 2 |
| 4 | Nut, M12-8 ,hex,nylon,zinc,lock | F81034-2 | 2 |
| | Assembly, Side Retainer | 115083 | 1 |
| 5 | Plate, Side Retainer Pivot | 115084 | 2 |
| 6 | Shaft, 30x1355 | 115085 | 1 |
| 7 | Washer, 10.5 Flat Zinc | F81055-1 | 2 |
| 8 | Bolt, M10x20-5.8 Fe/zn5 Pn-85/m-82105 | F81003-1 | 2 |
| | Assembly, Side Retainer Limit | 115086 | 1 |
| 9 | Weldment, Side Retainer Limit | 115087 | 1 |
| 10 | Washer, 6.4 Fe/zn5 Pn-78/m-82005 | F81053-1 | 2 |
| 11 | Bolt, M6x60-8.8 Hex Head Full Thread Zin | F81001-9 | 1 |
| 12 | Nut, M6 Hex Nylon Lock Zinc | F81031-2 | 1 |
| 13 | Washer, 10.5 Flat Zinc | F81055-1 | 8 |
| 14 | Bolt, M10 X 80 -8.8- Fe/zn5 Hex Head | F81003-50 | 4 |
| 15 | Nut,M10-8-b Nylon Hex Zinc Lock | F81033-1 | 4 |
| 16 | Pin, Bed-X Connecting | 017689 | 2 |
| 17 | Foot Weldment, LX250 Bed | 115132 | 3 |
| 18 | Nut, 3/4-10 Nylock | F05010-103 | 3 |

8 Bed Frame Assembly

Bed Section Assembly

| | | | | |
|----|---------------------------------|--------|----|--|
| 19 | BED SHIM, LX250 16GA (OPTIONAL) | 128014 | 22 | |
| | BED SHIM, LX250 11GA (OPTIONAL) | 128015 | 22 | |
| | BED SHIM, LX250 7GA (OPTIONAL) | 128016 | 11 | |

8.3 Bed Stop Assembly, Right

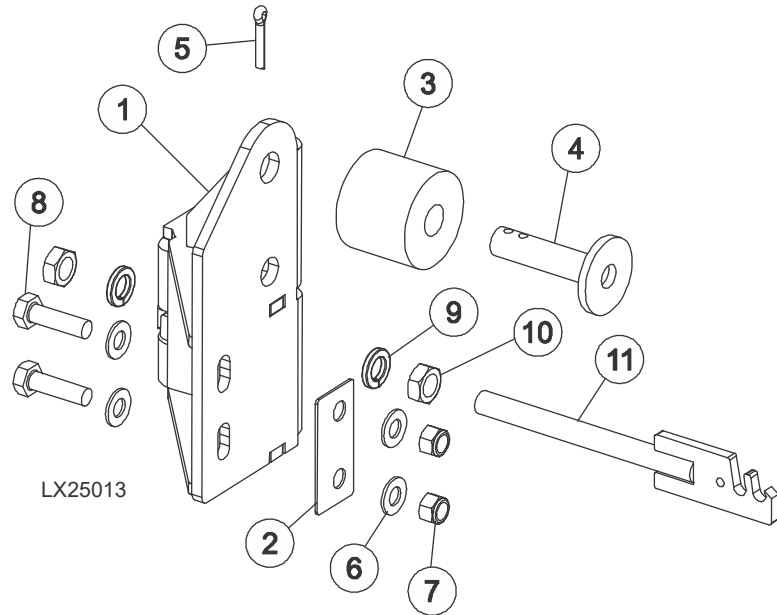


| REF | DESCRIPTION (◆ Indicates Parts Available In Assemblies Only) | PART # | QTY. |
|-----|--|------------|------|
| | Assembly, End Stop Right | 115106 | 1 |
| 1 | Weldment, End Stop RT | 115107 | 1 |
| 2 | Shim, End Stop | 115110 | 1 |
| 3 | Bushing, 11/16x2 1/8x1 3/4 Rubber | P12165 | 1 |
| 4 | Stop Weldment, Carriage Ptd | W09293 | 1 |
| 5 | Pin, 3/16x1 Cotter | F05012-21 | 1 |
| 6 | Washer, M10 Flat SAE | F05011-134 | 4 |
| 7 | Nut, M10-1.50 Hex Nyl Lock | F05004-270 | 2 |
| 8 | Screw, M10x1.5x35MM HH Zinc | F05004-97 | 2 |
| 9 | Tensioner Weldment, Power Feed Chain | 015721 | 1 |
| 10 | Nut, 1/2-20 Hex Jam | F05010-16 | 2 |
| 11 | Washer, 1/2 Split Lock | F05011-9 | 2 |

8 Bed Frame Assembly

Bed Stop Assembly, Rear Left

8.4 Bed Stop Assembly, Rear Left



| REF | DESCRIPTION (◆ Indicates Parts Available In Assemblies Only) | PART # | QTY. |
|-----|--|------------|------|
| | Assembly, End Stop LT | 115112 | 1 |
| 1 | Weldment, End Stop LT | 115113 | 1 |
| 2 | Shim, End Stop | 115110 | 1 |
| 3 | Bushing, 11/16x2 1/8x1 3/4 Rubber | P12165 | 1 |
| 4 | Stop Weldment, Carriage Ptd | W09293 | 1 |
| 5 | Pin, 3/16x1 Cotter | F05012-21 | 1 |
| 6 | Washer, M10 Flat SAE | F05011-134 | 4 |
| 7 | Nut, M10-1.50 Hex Nyl Lock | F05004-270 | 2 |
| 8 | Screw, M10x1.5x35MM HH Zinc | F05004-97 | 2 |
| 9 | Washer, 1/2 Split Lock | F05011-9 | 2 |
| 10 | Nut, 1/2-20 Hex Jam | F05010-16 | 2 |
| 11 | Tensioner Weldment, Power Feed Chain | 015721 | 1 |

SECTION 9 MISCELLANEOUS

9.1 Replacement Manuals



| REF | DESCRIPTION (◆ INDICATES PARTS AVAILABLE IN ASSEMBLIES ONLY) | PART # | QTY. |
|---------------------------------------|--|--------|------|
| Wood-Mizer Product Information | | | |
| 1 | ALL-PRODUCTS CATALOG | PS750 | 1 |
| Basic Sawmill Manuals | | | |
| 2 | TRU-SHARP BLADE HANDBOOK | M600 | 1 |
| 3 | WOOD-MIZER GENERAL INFORMATION | M601 | 1 |
| 4 | LX250 OPERATOR'S MANUAL | M2370 | 1 |
| 5 | LX250 PARTS MANUAL | M2372 | 1 |
| Power Option Manuals | | | |
| 6 | G38 ENGINE OPTION MANUAL | M2377 | 1 |
| Miscellaneous Manuals | | | |
| 7 | SHINGLE/LAPSIDER MANUAL (OPTION) | M621 | 1 |
| 8 | RESAW ATTACHMENT MANUAL (OPTION) | M263 | 1 |
| 9 | LATHE-MIZER MANUAL (OPTION) | M1337 | 1 |
| Electrical Diagrams | | | |
| 10 | ELECTRICAL INFORMATION (G38) | M2394 | 1 |

INDEX

B

bed frame
bed frame 8-1
bed section front 8-2, 8-4, 8-5

blade guides
idle side 2-1, 2-3, 2-5, 4-3, 4-5, 4-7

blade wheels
blade tensioner 3-4
drive side 3-1
idle side 3-2

C

control box
battery box 5-12
circuit breakers 5-5
drum switches 5-3, 5-11
front panel 5-6

F

feed
power feed 7-5, 7-7
track rollers (drive side) 7-1
track rollers (idle side) 7-3

M

manuals 9-1

P

parts list
how to use 1-1

R

replacement parts
sensor assembly 5-9

S

saw head
blade housing covers 4-8
water lube 4-1

U

up/down
blade scales 6-3, 6-9
mast pads 6-1