

## Replacement Parts

---

**HR300 Series**

**rev. A2.00**

---



**Safety is our #1 concern!** Read and understand all safety information and instructions before operating, setting up or maintaining this machine.

*Form #1696*

**©2019**

Printed in the United States of America, all rights reserved. No part of this manual may be reproduced in any form by any photographic, electronic, mechanical or other means or used in any information storage and retrieval system without written permission from

***Wood-Mizer***  
**8180 West 10th Street**  
**Indianapolis, Indiana 46214**

**California**  
Proposition 65 Warning



**WARNING:** Breathing gas/diesel engine exhaust exposes you to chemicals known to the State of California to cause cancer and birth defects or other reproductive harm.

Always start and operate the engine in a well-ventilated area.  
If in an enclosed area, vent the exhaust to the outside.  
Do not modify or tamper with the exhaust system.  
Do not idle the engine except as necessary.

For more information go to **[www.P65warnings.ca.gov](http://www.P65warnings.ca.gov)**.



**WARNING:** Drilling, sawing, sanding or machining wood products can expose you to wood dust, a substance known to the State of California to cause cancer. Avoid inhaling wood dust or use a dust mask or other safeguards for personal protection.

For more information go to **[www.P65Warnings.ca.gov/wood](http://www.P65Warnings.ca.gov/wood)**.

# Table of Contents

# Section-Page

<b>SECTION 1</b>	<b>REPLACEMENT PARTS</b>	<b>1-1</b>
1.1	How To Use The Parts List .....	1-1
1.2	Sample Assembly .....	1-1
<b>SECTION 2</b>	<b>BLADE GUIDES</b>	<b>2-1</b>
2.1	Blade Guide Assembly, Idle Side.....	2-1
2.2	Blade Guide Assembly, Drive Side.....	2-4
<b>SECTION 3</b>	<b>BLADE WHEELS &amp; DRIVE</b>	<b>3-1</b>
3.1	Blade Drive Assembly.....	3-1
3.2	Drive Belt Covers and Brake Solenoid .....	3-3
3.3	Blade Motor Assembly (20HP/25HP).....	3-5
3.4	Blade Motor Assembly (10HP).....	3-6
3.5	Idle Blade Wheel Assembly .....	3-7
<b>SECTION 4</b>	<b>SAW HEAD</b>	<b>4-1</b>
4.1	Blade Tensioner Assembly.....	4-1
4.2	Middle Throat Screw .....	4-3
4.3	Water Lube Assembly .....	4-4
4.4	Covers & Sawdust Chute.....	4-5
4.5	Saw Head Decals .....	4-7
<b>SECTION 5</b>	<b>UP/DOWN</b>	<b>5-1</b>
5.1	Mast Assembly .....	5-1
5.2	Up/Down System Assembly.....	5-3
<b>SECTION 6</b>	<b>FEED</b>	<b>6-1</b>
6.1	Feed Track Assembly .....	6-1
6.2	Feed Motor Assembly .....	6-3
6.3	Stationary Feed Rollers .....	6-4
6.4	Pressure Roller Assembly.....	6-5
6.5	Pressure Roller Chain Assembly.....	6-8
<b>SECTION 7</b>	<b>FRAME</b>	<b>7-1</b>
7.1	Saw Head Tilt Assembly .....	7-1
7.2	Control Box & Harnesses.....	7-3
<b>SECTION 8</b>	<b>OPTIONS</b>	<b>8-1</b>
8.1	End Table (Optional).....	8-1

**Table of Contents**

**Section-Page**

8.2 Feed Tables (Optional).....8-2  
8.3 Side Table (Optional) .....8-3  
8.4 Lube-Mizer Pump Assembly (Optional).....8-4

**INDEX**

# Table of Contents

# Section-Page

<b>SECTION 1</b>	<b>REPLACEMENT PARTS</b>	<b>1-1</b>
1.1	How To Use The Parts List .....	1-1
1.2	Sample Assembly .....	1-1
<b>SECTION 2</b>	<b>BLADE GUIDES</b>	<b>2-1</b>
2.1	Blade Guide Assembly, Idle Side.....	2-1
2.2	Blade Guide Assembly, Drive Side.....	2-4
<b>SECTION 3</b>	<b>BLADE WHEELS &amp; DRIVE</b>	<b>3-1</b>
3.1	Blade Drive Assembly.....	3-1
3.2	Drive Belt Covers and Brake Solenoid .....	3-3
3.3	Blade Motor Assembly (20HP/25HP).....	3-5
3.4	Blade Motor Assembly (10HP).....	3-6
3.5	Idle Blade Wheel Assembly .....	3-7
<b>SECTION 4</b>	<b>SAW HEAD</b>	<b>4-1</b>
4.1	Blade Tensioner Assembly.....	4-1
4.2	Middle Throat Screw .....	4-3
4.3	Water Lube Assembly .....	4-4
4.4	Covers & Sawdust Chute.....	4-5
4.5	Saw Head Decals .....	4-7
<b>SECTION 5</b>	<b>UP/DOWN</b>	<b>5-1</b>
5.1	Mast Assembly .....	5-1
5.2	Up/Down System Assembly.....	5-3
<b>SECTION 6</b>	<b>FEED</b>	<b>6-1</b>
6.1	Feed Track Assembly .....	6-1
6.2	Feed Motor Assembly .....	6-3
6.3	Stationary Feed Rollers .....	6-4
6.4	Pressure Roller Assembly.....	6-5
6.5	Pressure Roller Chain Assembly.....	6-8
<b>SECTION 7</b>	<b>FRAME</b>	<b>7-1</b>
7.1	Saw Head Tilt Assembly .....	7-1
7.2	Control Box & Harnesses.....	7-3
<b>SECTION 8</b>	<b>OPTIONS</b>	<b>8-1</b>
8.1	End Table (Optional).....	8-1
8.2	Feed Tables (Optional).....	8-2
8.3	Side Table (Optional) .....	8-3
8.4	Lube-Mizer Pump Assembly (Optional).....	8-4

## INDEX

I

## SECTION 1 REPLACEMENT PARTS

### 1.1 How To Use The Parts List

- Go to the appropriate section and locate the part in the illustration.
- Use the number pointing to the part to locate the correct part number and description in the table.
- Parts shown indented under another part are included with that part.
- Parts marked with a diamond (◆) are only available in the assembly listed above the part.

See the sample table below. Sample Part #A01111 includes part F02222-2 and subassembly A03333. Subassembly A03333 includes part S04444-4 and subassembly K05555. The diamond (◆) indicates that S04444-4 is not available except in subassembly A03333. Subassembly K05555 includes parts M06666 and F07777-77. The diamond (◆) indicates M06666 is not available except in subassembly K05555.

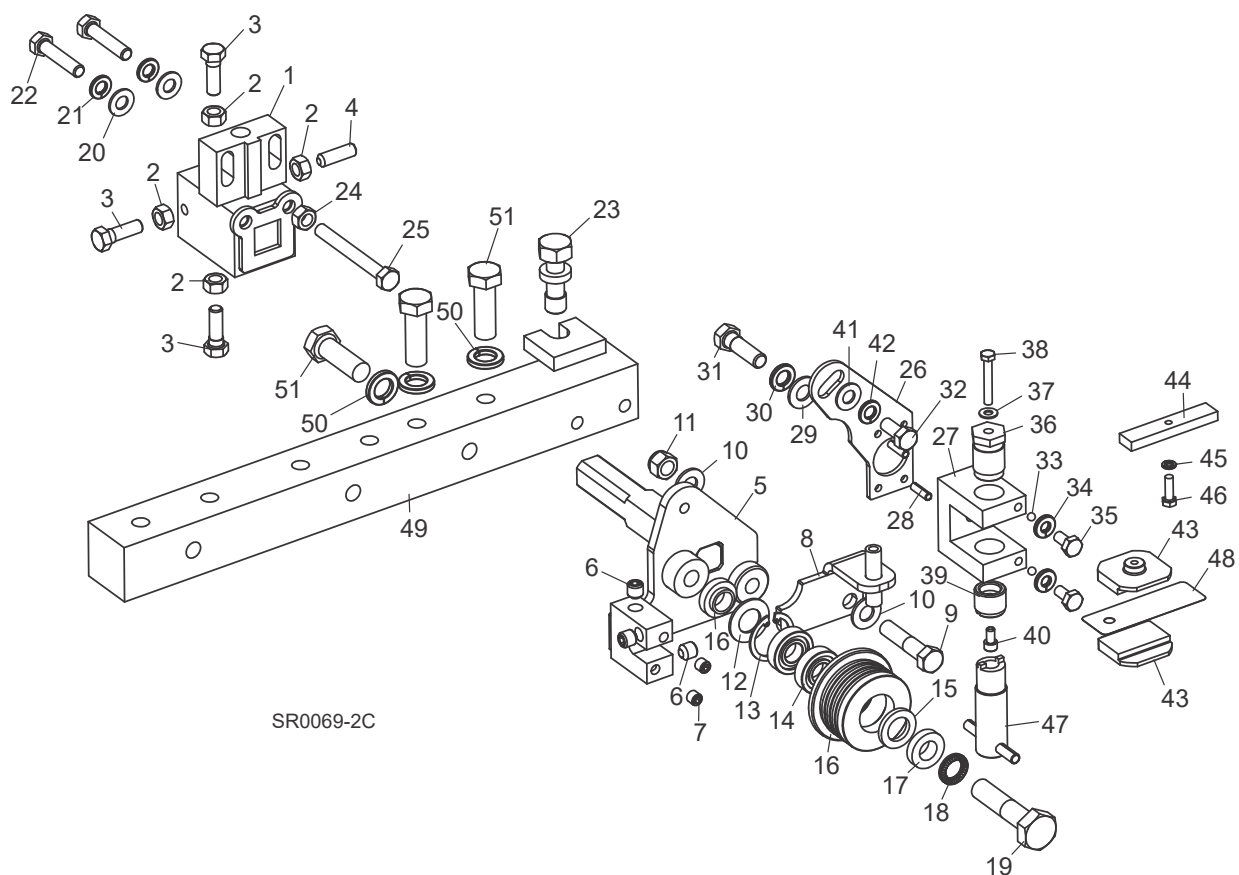
<b>1.2 Sample Assembly</b>				
REF	DESCRIPTION (◆ Indicates Parts Available In Assemblies Only)	PART #	QTY.	
	<b>SAMPLE ASSEMBLY, COMPLETE</b> (Includes All Indented Parts Below)	A01111	1	
1	Sample Part	F02222-22	1	
2	Sample Subassembly (Includes All Indented Parts Below)	A03333	1	
	Sample Part (Indicates Part Is Only Available With A03333)	S04444-4	1	◆
3	Sample Subassembly (Includes All Indented Parts Below)	K05555	1	
	Sample Part (Indicates Part Is Only Available With K05555)	M06666	2	◆
4	Sample Part	F07777-77	1	

**To Order Parts:**

From the continental U.S., call **1-800-525-8100** to order parts. Have your customer number, VIN, and part numbers ready when you call. From other international locations, contact the Wood-Mizer distributor in your area for parts.

## SECTION 2 BLADE GUIDES

### 2.1 Blade Guide Assembly, Idle Side



REF	DESCRIPTION (◆ Indicates Parts Available In Assemblies Only)	PART #	QTY.
	<b>GUIDE ASSEMBLY, IDLE SIDE BLADE ROLLER</b>	006338	1
	Block Assembly, Blade Guide Mount	065677	1
<b>1</b>	Block Weldment, Blade Guide Mount	003911	1 ◆
<b>2</b>	Nut, 5/16-18 Hex	F05010-17	4
<b>3</b>	Bolt, 5/16-18 x 1" Hex Head Stainless Steel	F05006-88	3
<b>4</b>	Screw, 5/16-18 x 1" Socket Head Flat Point Stainless Steel Set	F05006-122	1
<b>5</b>	Shaft Weldment, Idle Side Guide	003924	1
<b>6</b>	Fitting, 1/8" NPT Socket Pipe Plug	P30127	3
<b>7</b>	Fitting, 1/16" NPT Socket Pipe Plug	007734	2
<b>8</b>	Bracket Weldment, Water Lube	006322	1
<b>9</b>	Bolt, 3/8-16UNF-2A x 1 3/4" Grade 5	F05007-119	1
<b>10</b>	Washer, 3/8" SAE Flat	F05011-3	2
<b>11</b>	Nut, 3/8-16 Hex Nylon Lock	F05010-10	1



## Replacement Parts 2

*Blade Guide Assembly, Idle Side*

	Roller Assembly, Blade Guide (standard for use with 1 1/4" & 1 1/2" blades)	A04925 <sup>1</sup>	1	
	Roller Assembly, Extended Blade Guide (optional for use with 1 1/2" blades)	014299 <sup>1</sup>	1	
	Bearing Kit, Blade Guide Rebuild	K07079	1	
12	Washer, 5/8" White Felt	P04252	1	
13	Ring, 1 1/8" Interior Retaining	F04254-1	1	
14	Bearing, R8-2RS Blade Guide	015975	2	◆
15	Washer, 5/8" Gray Felt	P06455	1	
	Screw, 1/4-28 x 1/4" Socket Head Cup Point Set Black Oxide	F05005-105	1	
	Instruction Sheet, Blade Guide Rebuild	057407-1507	1	
16	Roller, Flanged Blade Guide (1 1/4" & 1 1/2" blade)	S04250	1	◆
	Roller, Flanged Blade Guide (1 1/2" blade)	014298	1	◆
	Instruction Sheet, Blade Guide Roller Replacement	A04925-364	1	
17	Spacer, Blade Guide	S04253	2	
18	Washer, 1/2" Nord-Lock	F05011-125	1	
19	Bolt, 1/2-13 x 2 1/4" Hex Head Grade 5	F05008-10	1	
20	Washer, 5/16" SAE Flat	F05011-17	2	
21	Washer, 5/16" Split Lock	F05011-13	2	
22	Bolt, 5/16-18 x 1 1/2" Hex Head	F05006-76	2	
23	Bolt, Blade Guide Vertical Adjustment	035656	1	
24	Nut, 5/16-18 Hex	F05010-17	1	
25	Bolt, 5/16-18 x 2 3/4" Hex Head Full Thread	F05006-136	1	
	<b>GUIDE KIT, HIGH-PERFORMANCE BLADE GUIDE (OPTIONAL)</b>	006340 <sup>2</sup>	1	
	Block Assembly, Idle Side Blade Guide	003928	1	
26	Plate, Block Tilt Adjustment	003915	1	
27	Block, Guide Block Mount	003909	1	
28	Pin, 3/16" x 5/8" Roll	F05012-22	2	
29	Washer, 3/8" SAE Flat	F05011-3	1	
30	Washer, 3/8" Split Lock	F05011-4	1	
31	Bolt, 3/8-16 x 1 1/4" Hex Head Grade 5	F05007-123	1	
32	Bolt, 5/16-18 x 3/4" Hex Head	F05006-102	1	
33	Ball, 3/16" Dia. Nylon	003914	2	
34	Washer, 1/4" Split Lock	F05011-14	2	
35	Bolt, 1/4-20 x 1/2" Hex Head	F05005-15	2	
36	Bolt, Blade Guide Block Mount	003994	1	
37	Washer, #10 Brass	042867	1	
38	Bolt, #10-32 x 1 1/4" Hex Head Stainless Steel	F05004-240	1	
39	Screw, Lower Block Adjustment	044057	1	
40	Screw, #10-32 x 3/8" Socket Head Stainless Steel	F05004-200	1	
41	Washer, 5/16" SAE Flat	F05011-17	1	
42	Washer, 5/16" Split Lock	F05011-13	1	

# 2

## Replacement Parts

### Blade Guide Assembly, Idle Side

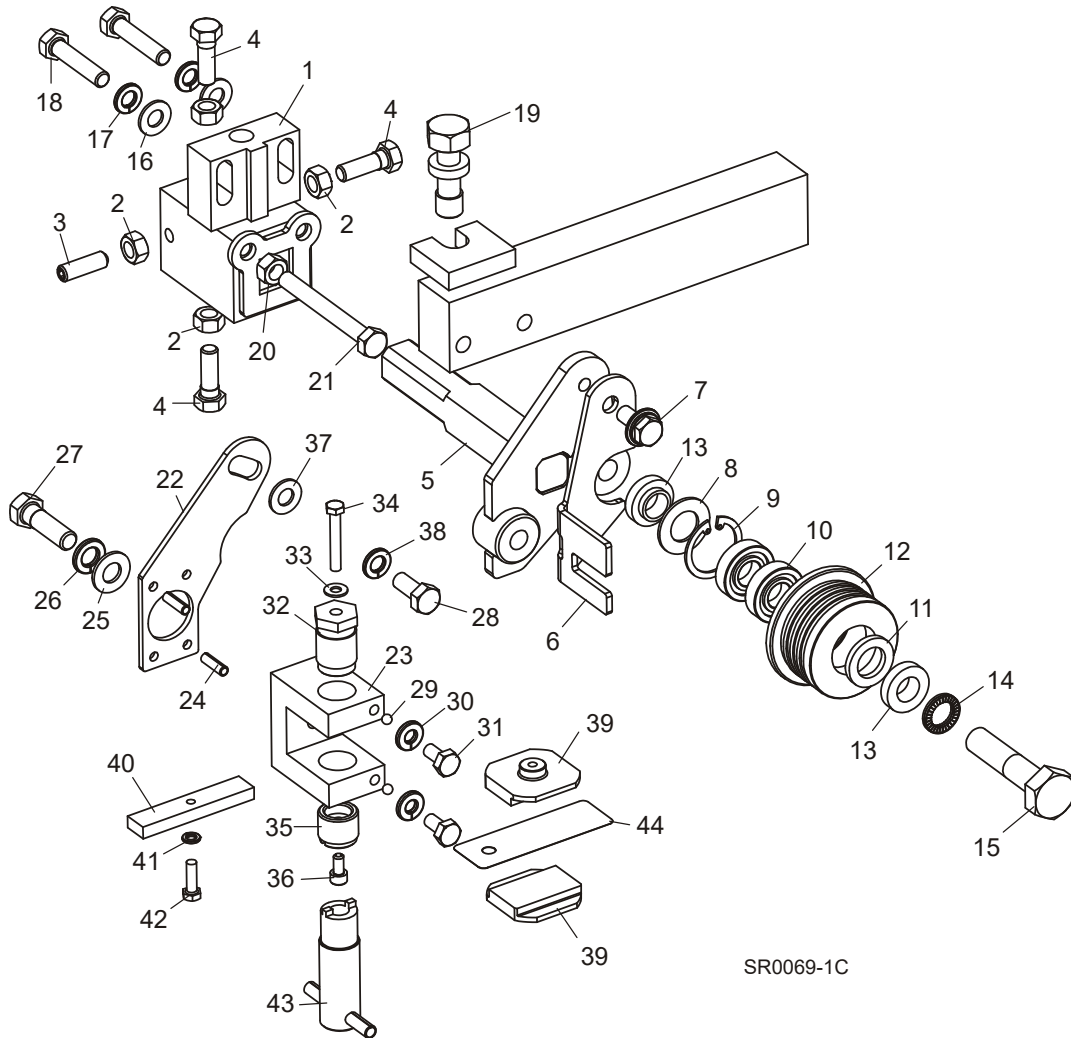
43	Block, Blade Guide Wear (Standard for 1 1/4" Blades)	052355 <sup>3</sup>	2	
	Block, Blade Guide Wear (Optional for 1 1/2" Blades)	052309 <sup>3</sup>	2	
	Block Assembly, 1" Sq. EZ-Glide Wear	036347 <sup>3</sup>	2	
44	Block, Blade Guide Alignment	035799	1	
45	Washer, #10 Split Lock	F05011-20	1	
46	Screw, #10-32 x 5/8" Hex Head	F05004-152	1	
47	Adjustment Tool, Lower Guide Block	044064	1	
48	Shim, .008" Blade Guide Block Spacer	035248	1	
Drive Side Blade Guide Parts ( <a href="#">See Section 2.2</a> )				
49	<b>BAR WELDMENT, SHR IDLE SIDE BLADE GUIDE</b>	036864	1	
50	<b>WASHER, 1/2" SPLIT LOCK</b>	F05011-9	3	
51	<b>BOLT, 1/2-13 X 1 1/2" HEX HEAD GRADE 5</b>	F05008-33	3	

<sup>1</sup> The resaw is equipped standard with blade guide rollers that can be used with the standard 1 1/4" blade or 1 1/2" blades. Optional extended blade guide rollers are available for use with 1 1/2" blades. The extended rollers may provide more stability during difficult sawing, but will reduce the total amount of times the blade can be reused after sharpening. Use kit 006382 to convert the rollers and guide blocks for both blade guides for 1 1/2" blades.

<sup>2</sup> High-Performance Blade Guide Kit requires LMS blade lube system. If resaw already equipped with LMS, use kit 006340 to upgrade both drive and idle side blade guides to High-Performance. If no LMS, add kit LMS-SHR.

<sup>3</sup> 052355 blocks for use with 1 1/4" blade provided as standard equipment. 052309 blocks available for optional use with 1 1/2" blades. Use kit 006382 to convert the rollers and guide blocks for both blade guides for 1 1/2" blades. EZ-Glide blocks 036347 are available for customers who prefer this block.

## 2.2 Blade Guide Assembly, Drive Side



REF	DESCRIPTION (◆ Indicates Parts Available In Assemblies Only)	PART #	QTY.
	<b>GUIDE ASSEMBLY, DRIVE SIDE BLADE ROLLER</b>	003905	1
	Block Assembly, Blade Guide Mount	003910	1
1	Block Weldment, Blade Guide Mount	003911	1 ◆
2	Nut, 5/16-18 Hex	F05010-17	4
3	Screw, 5/16-18 x 1" Socket Head Flat Point Stainless Steel Set	F05006-122	1
4	Bolt, 5/16-18 x 1" Hex Head Stainless Steel	F05006-88	3
5	Shaft Weldment, Drive Side Guide	003913	1
6	Plate, Blade Guide Deflector	003916	1
7	Bolt, 5/16-18 x 3/4" Hex Head w/Flat & Lock Washer	F05006-101	1
	Roller Assembly, Blade Guide (standard for use with 1 1/4" & 1 1/2" blades)	A04925 <sup>1</sup>	1
	Roller Assembly, Extended Blade Guide (optional for use with 1 1/2" blades)	014299 <sup>1</sup>	1

# 2

## Replacement Parts

### Blade Guide Assembly, Drive Side

	Bearing Kit, Blade Guide Rebuild	K07079	1	
8	Washer, 5/8" White Felt	F04252	1	
9	Ring, 1 1/8" Interior Retaining	F04254-1	1	
10	Bearing, R8-2RS Blade Guide	015975	2	◆
11	Washer, 5/8" Gray Felt	F06455	1	
	Screw, 1/4-28 x 1/4" Socket Head Cup Point Set Black Oxide	F05005-105	1	
	Instruction Sheet, Blade Guide Rebuild	057407-1507	1	
12	Roller, Flanged Blade Guide (1 1/4" & 1 1/2" blade)	S04250	1	◆
	Roller, Flanged Blade Guide (1 1/2" blade)	014298	1	◆
	Instruction Sheet, Blade Guide Roller Replacement	A04925-364	1	
13	Spacer, Blade Guide	S04253	2	
14	Washer, 1/2" Nord-Lock	F05011-125	1	
15	Bolt, 1/2-13 x 2 1/4" Hex Head Grade 5	F05008-10	1	
16	Washer, 5/16" SAE Flat	F05011-17	2	
17	Washer, 5/16" Split Lock	F05011-13	2	
18	Bolt, 5/16-18 x 1 1/2" Hex Head	F05006-76	2	
19	Bolt, Blade Guide Vertical Adjustment	035656	1	
20	Nut, 5/16-18 Hex	F05010-17	1	
21	Bolt, 5/16-18 x 2 3/4" Hex Head Full Thread	F05006-136	1	
	<b>GUIDE KIT, HIGH-PERFORMANCE BLADE GUIDE (OPTIONAL)</b>	006340 <sup>2</sup>	1	
	Block Assembly, Drive Side Blade Guide	003927	1	
22	Plate, Block Tilt Adjustment	003915	1	
23	Block, Guide Block Mount	003909	1	
24	Pin, 3/16" x 5/8" Roll	F05012-22	2	
25	Washer, 3/8" SAE Flat	F05011-3	1	
26	Washer, 3/8" Split Lock	F05011-4	1	
27	Bolt, 3/8-16 x 1 1/4" Hex Head Grade 5	F05007-123	1	
28	Bolt, 5/16-18 x 3/4" Hex Head	F05006-102	1	
29	Ball, 3/16" Dia. Nylon	003914	2	
30	Washer, 1/4" Split Lock	F05011-14	2	
31	Bolt, 1/4-20 x 1/2" Hex Head	F05005-15	2	
32	Bolt, Blade Guide Block Mount	003994	1	
33	Washer, #10 Brass	042867	1	
34	Bolt, #10-32 x 1 1/4" Hex Head Stainless Steel	F05004-240	1	
35	Screw, Lower Block Adjustment	044057	1	
36	Screw, #10-32 x 3/8" Socket Head Stainless Steel	F05004-200	1	
37	Washer, 5/16" SAE Flat	F05011-17	1	
38	Washer, 5/16" Split Lock	F05011-13	1	
39	Block, Blade Guide Wear (Standard for 1 1/4" Blades)	052355 <sup>3</sup>	2	
	Block, Blade Guide Wear (Optional for 1 1/2" Blades)	052309 <sup>3</sup>	2	
	Block Assembly, 1" Sq. EZ-Glide Wear	036347 <sup>3</sup>	2	
40	Block, Blade Guide Alignment	035799	1	
41	Washer, #10 Split Lock	F05011-20	1	

## Replacement Parts 2

*Blade Guide Assembly, Drive Side*

<b>42</b>	Screw, #10-32 x 5/8" Hex Head	F05004-152	1	
<b>43</b>	Adjustment Tool, Lower Guide Block	044064	1	
<b>44</b>	Shim, .008" Blade Guide Block Spacer	035248	1	
	Idle Side Blade Guide Parts ( <a href="#">See Section 2.1</a> )			

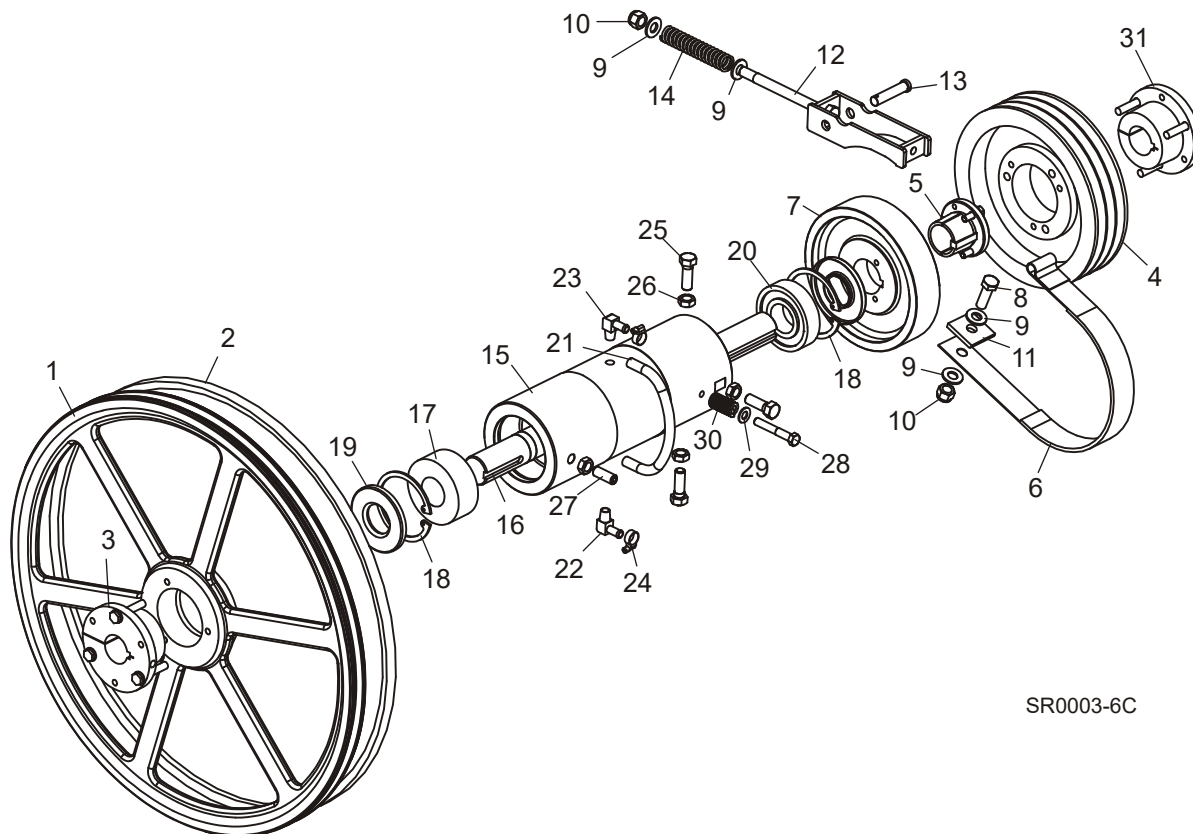
<sup>1</sup> The resaw is equipped standard with blade guide rollers that can be used with the standard 1 1/4" blade or 1 1/2" blades. Optional extended blade guide rollers are available for use with 1 1/2" blades. The extended rollers may provide more stability during difficult sawing, but will reduce the total amount of times the blade can be reused after sharpening. Use kit 006382 to convert the rollers and guide blocks for both blade guides for 1 1/2" blades.

<sup>2</sup> High-Performance Blade Guide Kit requires LMS blade lube system. If resaw already equipped with LMS, use kit 006340 to upgrade both drive and idle side blade guides to High-Performance. If no LMS, add kit LMS-SHR.

<sup>3</sup> 052355 blocks for use with 1 1/4" blade provided as standard equipment. 052309 blocks available for optional use with 1 1/2" blades. Use kit 006382 to convert the rollers and guide blocks for both blade guides for 1 1/2" blades. EZ-Glide blocks 036347 are available for customers who prefer this block.

## SECTION 3 BLADE WHEELS & DRIVE

### 3.1 Blade Drive Assembly



SR0003-6C

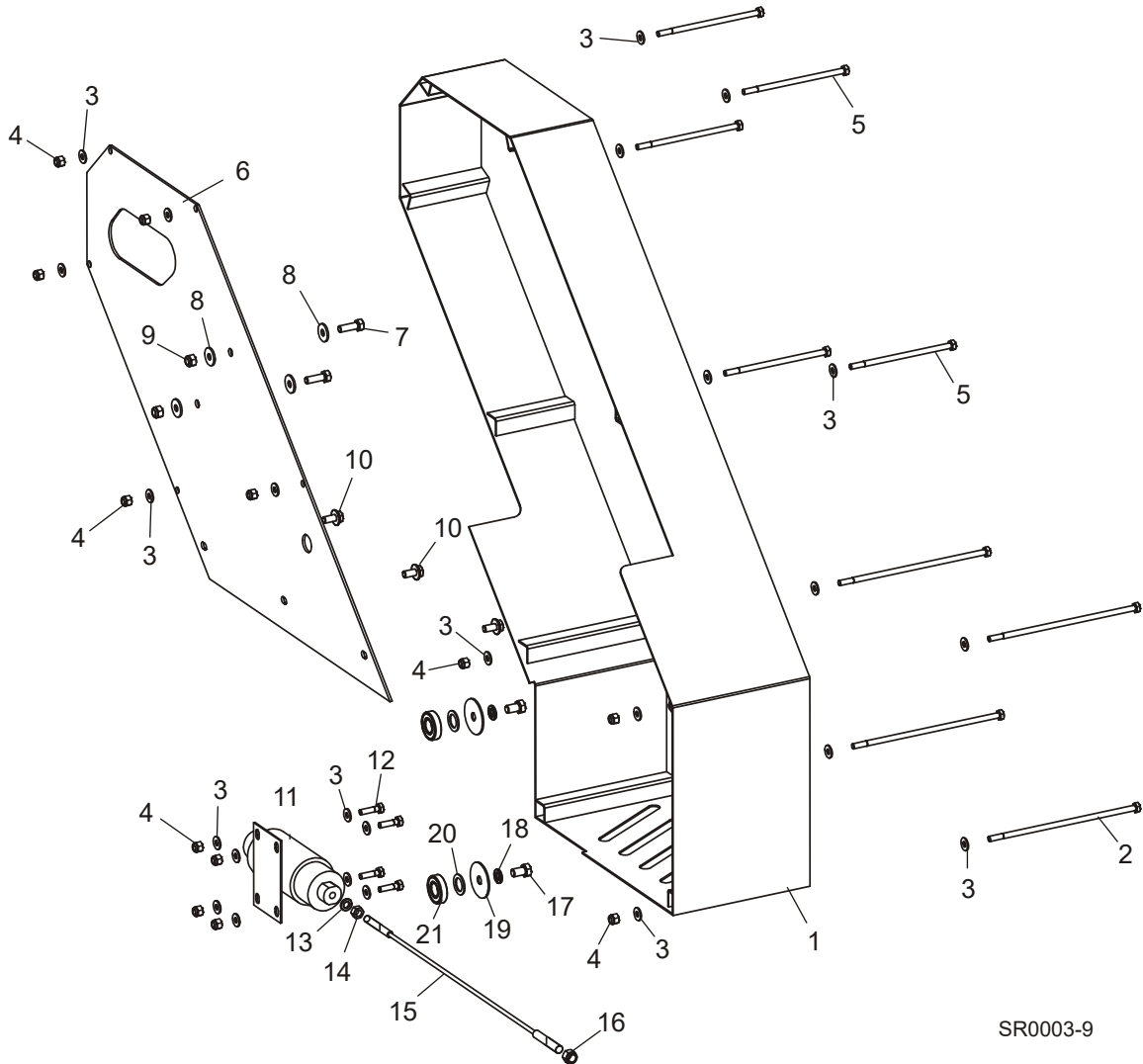
REF	DESCRIPTION (◆ Indicates Parts Available In Assemblies Only)	PART #	QTY.
1	SHEAVE, 24" SHR "V" GROOVE	036827	1
2	BELT, B72.5	017922-1	1
3	BUSHING, SF X 1 9/16"	016532	1
4	SHEAVE, 3/5V X 9.25SF (HR300EC25-1/HR300EB25-1 60HZ ONLY)	007349	1
	SHEAVE, 3/5V X 9.75SF (HR300EC20-1/HR300EB20-1 60HZ ONLY)	036929	1
	SHEAVE, 3/5V5.5SDS (HR300EC20-1/HR300EB20-1 50HZ ONLY)	006320	1
	SHEAVE, 2B8.6SK (HR300EA10-1 ONLY)	038845	1
5	BUSHING, P1 1-9/16 SPLIT TAPER	014003	1
6	BAND, UPPER PIVOT BRAKE	014391	1
7	PULLEY, BRAKE	014000	1
8	BOLT, 1/2-13 X 1 1/2" HEX HEAD GRADE 5	F05008-33	1
9	WASHER, 1/2" SAE FLAT	F05011-2	4
10	NUT, 1/2-13 HEX NYLON LOCK	F05010-8	2
11	PLATE, 1/4" X 1 3/4" X 1 3/4" BRAKE STRAP	S04195	1

12	<b>BRAKE LINK WELDMENT, SHR</b>	036953	1	
13	<b>PIN, 1/2" X 2 1/4" CLEVIS</b>	F05012-81	1	
14	<b>SPRING, .88" X 4.31" X .125"</b>	036954	1	
	<b>BEARING ASSEMBLY, SHR</b>	036925	1	
15	Housing, SHR Cylindrical Bearing	036927	1	
16	Shaft, SHR Drive	036928	1	
17	Bearing, MU5308TV	036926	1	
18	Ring, 90mm I17 IR Retaining	F04254-17	2	
19	Seal, CR15890	P10206	2	
20	Bearing, 6308 C3, Open	016055	1	
21	Tube, Oil Level	016394	1	
22	Fitting, 1/4" NPT x 3/8" Hose Barb, Elbow	016330	2	
23	Fitting, 1/4" NPT x 3/8" Hose Barb, Vented Elbow	016331	1	
24	Hose Clamp, 7/32"-5/8"	P649	2	
25	<b>BOLT, 1/2-20 X 1 1/2" HEX HEAD GRADE 5</b>	F05008-53	3	
26	<b>NUT, 1/2-20 HEX JAM</b>	F05010-16	4	
27	<b>BOLT, 1/2-20 X 1 1/2" STAINLESS STEEL CONE POINT</b>	F05004-170	1	
28	<b>BOLT, 3/8-16 X 2-1/2" HEX HEAD GRADE 5</b>	F05007-125	1	
29	<b>WASHER, 3/8" FLAT SAE</b>	F05011-3	1	
30	<b>SPRING, 3/4" OD X 1 1/2" DIE</b>	034430	1	
31	<b>BUSHING, SF X 1 9/16"</b> <b>(HR300EC20-1/HR300EB20-1/HR300EC25-1/HR300EB25-1 60HZ ONLY)</b>	016532	1	
	<b>BUSHING, SDS X 1 5/8" (HR300EC20-1/HR300EB20-1 50HZ ONLY)</b>	033249	1	
	<b>BUSHING, SK X 1 9/16" (HR300EA10-1 ONLY)</b>	014690	1	

# 3 Replacement Parts

## Drive Belt Covers and Brake Solenoid

### 3.2 Drive Belt Covers and Brake Solenoid



SR0003-9

REF	DESCRIPTION (◆ Indicates Parts Available In Assemblies Only)	PART #	QTY.
1	GUARD WELDMENT, SHR	036935	1
2	BOLT, 1/4-20 X 8" HEX HEAD GRADE 5	F05005-173	4
3	WASHER, 1/4" SAE FLAT	F05011-11	26
4	NUT, 1/4-20 NYLON LOCK	F05010-69	13
5	BOLT, 1/4-20 X 5 1/2" HEX HEAD GRADE 5	F05005-82	5
6	PLATE, REAR GUARD	036896	1
7	BOLT, 5/16-18 X 1" HEX HEAD GRADE 5	F05006-27	2
8	WASHER, 5/16" STANDARD FLAT	F05011-16	4
9	NUT, 5/16-18 HEX NYLON LOCK	F05010-58	2
10	BOLT, 5/16-18 X 3/4" HEX HEAD W/FLAT & LOCK WASHER	F05006-101	3



## Replacement Parts

### *Drive Belt Covers and Brake Solenoid*

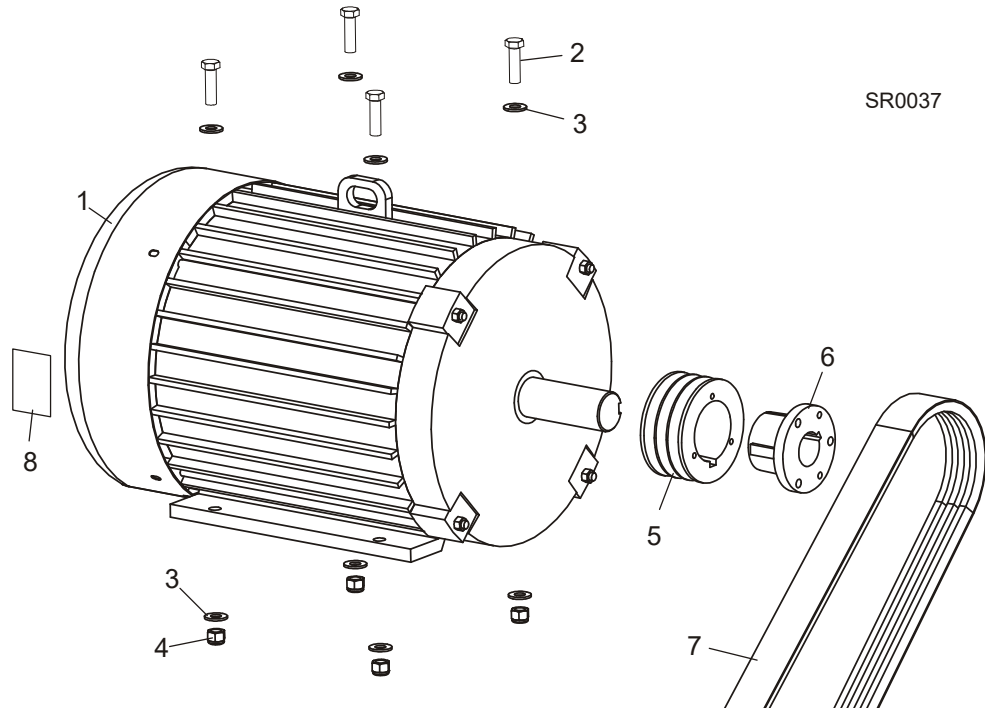
**3**

11	SOLENOID, 39#, 24VDC	038442	1	
12	BOLT, 1/4-20 X 1" HEX HEAD GRADE 5	F05005-101	4	
13	WASHER, 5/16" SPLIT LOCK	F05011-13	1	
14	NUT, 5/16-24 HEX	F05010-28	1	
15	CABLE, SHR BRAKE	038460	1	
16	NUT, 3/8-16 HEX NYLON LOCK	F05010-10	1	
17	BOLT, 3/8-16 X 1/2" HEX HEAD GRADE 5	F05004-124	2	
18	WASHER, 3/8" SPLIT LOCK	F05011-4	2	
19	WASHER, .39" X 1.75" X 14GA	036931	2	
20	SHIM, 5/8" X 1" X 1/16"	016510	2	
21	BEARING, R-10	P04156	2	

# 3 Replacement Parts

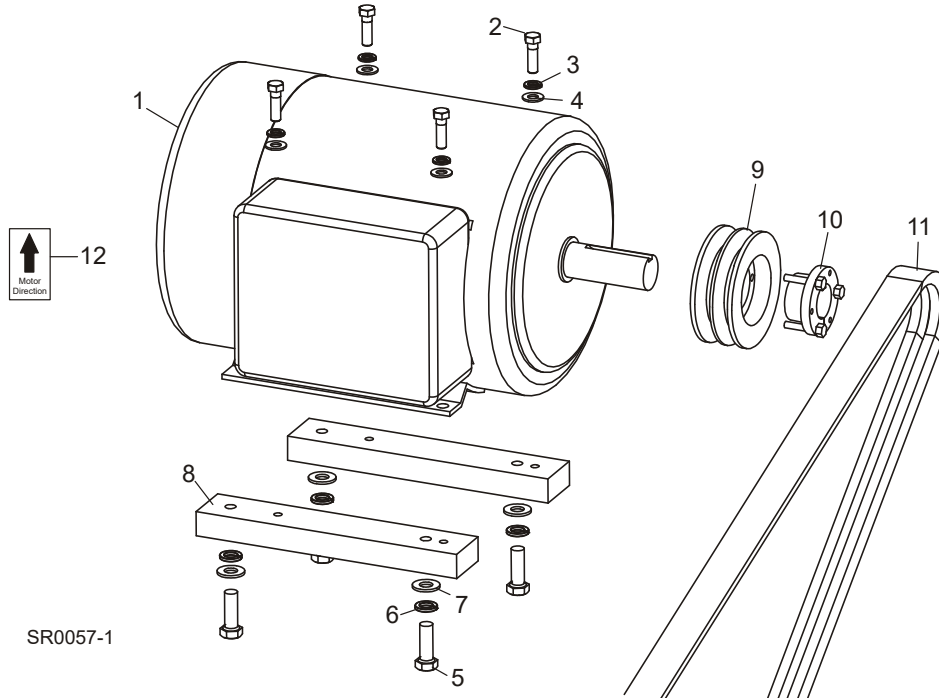
## Blade Motor Assembly (20HP/25HP)

### 3.3 Blade Motor Assembly (20HP/25HP)



REF	DESCRIPTION (◆ Indicates Parts Available In Assemblies Only)	PART #	QTY.
	<b>MOTOR ASSEMBLY, 20HP SINGLE HEAD RESAW</b>	038489	1
	<b>MOTOR ASSEMBLY, 25HP SINGLE HEAD RESAW</b>	038488	1
1	Motor, Lincoln 20HP 1775 RPM (HR300EB20-1, HR300EC20-1, HR300EH20-1 Only)	074144	1
	Motor, Lincoln 25HP 1725 RPM (HR300EB25-1/HR300EC25-1 Only)	074121	1
2	Bolt, 1/2-13 x 1 3/4" Hex Head Grade 5	F05008-88	4
3	Washer, 1/2" SAE Flat	F05011-2	8
4	Nut, 1/2-13 Hex Nylon Lock	F05010-8	4
5	Sheave, 3/5V4.9 Drive (20HP Motor Only)	034560	1
	Sheave, 3/5V4.65 Drive (25HP Motor Only)	007350	1
6	Bushing, Q1 x 1 5/8" (20HP Motor Only)	034503	1
	Bushing, SDS x 1 7/8" (25HP Motor Only Rev. A1.04+)	007351	1
7	Belt, 3/5V800 Drive	038478	1
	Driven Sheave & Bushing ( <a href="#">See Section 3.1</a> )		
8	<b>DECAL, MOTOR DIRECTION</b>	S20097	1

### 3.4 Blade Motor Assembly (10HP)

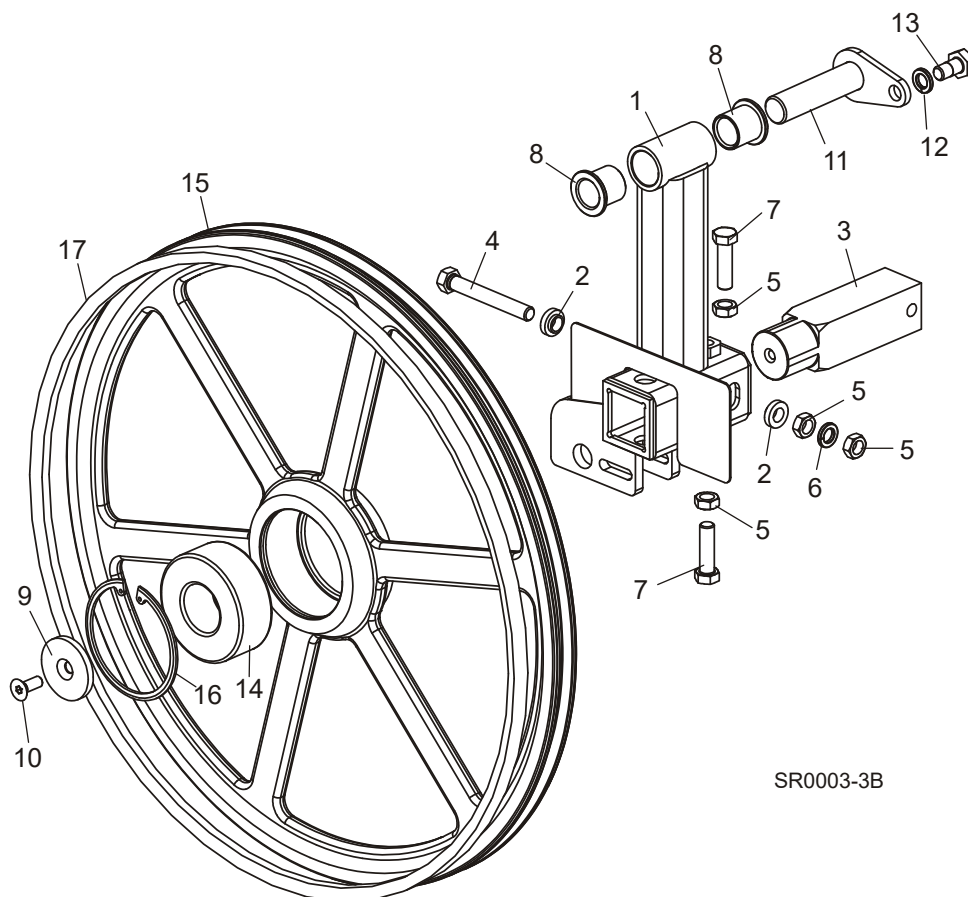


REF	DESCRIPTION (◆ Indicates Parts Available In Assemblies Only)	PART #	QTY.
	<b>MOTOR ASSEMBLY, 10HP SINGLE HEAD RESAW</b>	038490	1
1	Motor, Lincoln 10HP 1725 RPM Single Phase	038487	1
2	Bolt, 3/8-16 x 1 1/4" Hex Head Grade 5	F05007-123	4
3	Washer, 3/8" Split Lock	F05011-4	4
4	Washer, 3/8" SAE Flat	F05011-3	4
5	Bolt, 1/2-13 x 1 1/2" Hex Head Grade 5	F05008-33	4
6	Washer, 1/2" Split Lock	F05011-9	4
7	Washer, 1/2" SAE Flat	F05011-2	4
8	Spacer, 10HP SHR Motor	038661	2
9	Sheave, 2B4.0SH	P21003	1
10	Bushing, SH x 1 3/8"	P21001	1
11	Belt, 2BX74 Drive	P10277-2	1
	Driven Sheave & Bushing ( <a href="#">See Section 3.1</a> )		
12	<b>DECAL, MOTOR DIRECTION</b>	S20097	1

# 3 Replacement Parts

## Idle Blade Wheel Assembly

### 3.5 Idle Blade Wheel Assembly



REF	DESCRIPTION (◆ Indicates Parts Available In Assemblies Only)	PART #	QTY.
	<b>IDLER ASSEMBLY, SHR</b>	036877	1
1	Idler Weldment, SHR	036874	1
2	Spacer, .510" x .937" x .34"	S04253	2
3	Shaft, 1 3/4" Idler, 3/8" Retainer	016398	1
4	Bolt, 1/2-20 x 3 3/4" Hex Head Full Thread Grade 2	F05008-111	1
5	Nut, 1/2-20 Hex Jam	F05010-16	4
6	Washer, 1/2" Split Lock	F05011-9	1
7	Bolt, 1/2-20 x 1 3/4" Hex Head Full Thread	F05008-127	2
8	Bushing, 1" ID x 1-1/4" OD Flanged	P109	2
9	Retainer, 13/32" I.D. x 2 1/4" O.D. x 1/4"	016397	1
10	Screw, 3/8-16 x 1" Socket Head	F05007-64	1
11	<b>PIN WELDMENT, SIDE SUPPORT</b>	042232	1
12	<b>WASHER, 1/2" SPLIT LOCK</b>	F05011-9	1
13	<b>BOLT, 1/2-13 X 1 HEX HEAD GRADE 2</b>	F05008-50	1
	<b>WHEEL ASSEMBLY, 24 IDLE, BELTED</b>	017835	1

**Replacement Parts** **3**  
*Idle Blade Wheel Assembly*

---

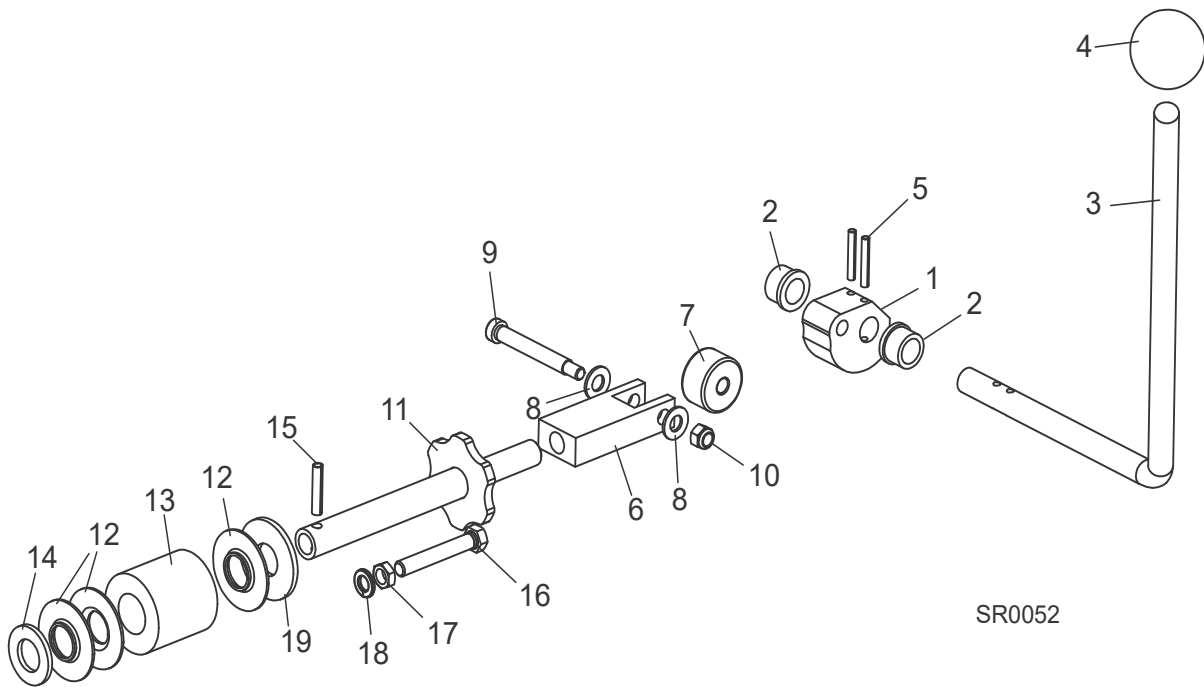
<b>14</b>	Bearing, 5309-2RS	016014	1	
<b>15</b>	Sheave, 24" Idler "V"Groove	034871	1	
<b>16</b>	Ring, 100mm Internal Beveled	F04254-28	1	
<b>17</b>	<b>BELT, B72.5</b>	017922-1	1	

# 4 Replacement Parts

## Blade Tensioner Assembly

### SECTION 4 SAW HEAD

#### 4.1 Blade Tensioner Assembly



REF	DESCRIPTION (◆ Indicates Parts Available In Assemblies Only)	PART #	QTY.
	<b>TENSION ASSEMBLY, CAM ACTUATED BLADE</b>	038643	1
1	Cam, Tension	049104	1
2	Bushing, 5/8" x 7/8" x 1/2" Bronze	P05135	2
3	Handle, Blade Tensioner	048804	1
4	Knob, 5/8-18 Ball	P04211	1
5	Pin, 3/16" x 1 1/4" Roll	F05012-16	2
6	Block, Tensioner Bearing Mount	128072 <sup>1</sup>	1
7	Cam Follower, 3/8" x 1 3/8" x 13/16"	048219	1
8	Washer, 3/8" SAE Flat	F05011-3	2
9	Bolt, 3/8 x 2 1/2" Socket Head Shoulder	F05007-202	1
10	Nut, 5/16-18 Hex Nylon Lock	F05010-58	1
11	Shaft Weldment, Blade Tension	038642	1
12	Guide, Tension Handle	014925	3
13	Spring, Rubber Tensioner Blade	014828	1
14	Washer, 3/4" SAE Flat	F05011-62	1
15	Pin, 1/4" x 1 1/4" Roll	F05012-12	1
16	Bolt, 3/8-16 x 2 1/2" Hex Head Full Thread	F05007-157	1
17	Nut, 3/8-16 Jam	F05010-29	1

**Replacement Parts** **4**  
*Blade Tensioner Assembly*

---

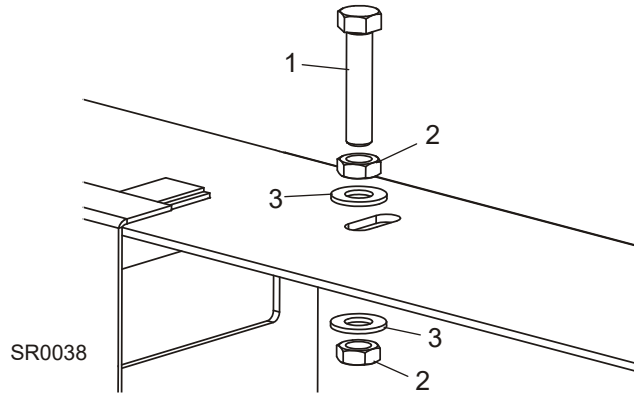
<b>18</b>	Washer, 3/8" Split Lock	F05011-4	1	
<b>19</b>	Washer, 3/4" USS Flat	F05011-29	1	

<sup>1</sup> Bearing Mount 049321 was replaced with 128072 on 10/16/2019 per ECN 36137.

# 4 Replacement Parts

## Middle Throat Screw

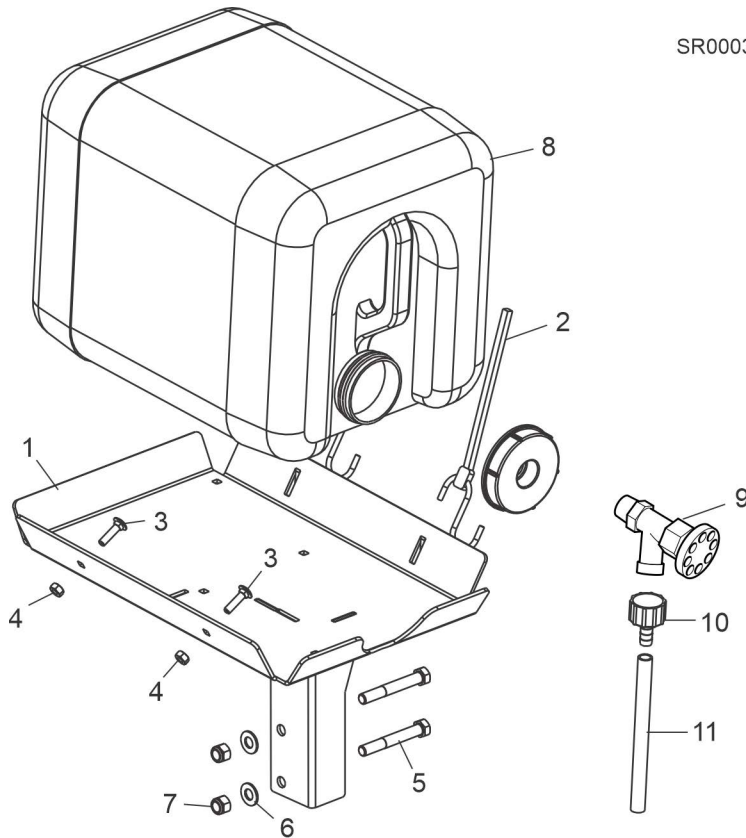
### 4.2 Middle Throat Screw



REF	DESCRIPTION (◆ Indicates Parts Available In Assemblies Only)	PART #	QTY.
1	<b>BOLT, 3/8-16 X 1 3/4" HEX HEAD GRADE 5</b>	F05007-129	1
2	<b>NUT, 3/8-16 JAM</b>	F05010-29	2
3	<b>WASHER, 3/8" FLAT SAE</b>	F05011-3	2



### 4.3 Water Lube Assembly



SR0003-1D

REF	DESCRIPTION (◆ Indicates Parts Available In Assemblies Only)	PART #	QTY.
	<b>TRAY ASSEMBLY, LT28 WATER BOTTLE</b>	048599	1
1	Tray Weldment, LT28 Water Bottle	048600	1
2	Strap, 20" Rubber w/Hook	P11668	2
3	Bolt, 1/4-20 X 1" Carriage Head	F05005-34	2
4	Nut, 1/4-20 Hex Lock	F05010-21	2
5	Bolt, 3/8-16 x 2 3/4" Hex Head	F05007-29	2
6	Washer, 3/8" Flat SAE	F05011-3	2
7	Nut, 3/8-16 Hex Nylon Lock	F05010-10	2
8	Bottle Assembly, Water Lube w/Cap	014642	1
	O-ring, Water Bottle Cap	061372 <sup>1</sup>	1
	Fitting, 3/4" FPT x 3/4" MPT	014636	1
9	Valve, 3/4 NPT Elbow 3/4 Male GHT Outlet	133320 <sup>2</sup>	1
		014100	1
10	Fitting, 5/8-3/8 Hose Barb	014113	1
11	Hose, Water Lube Stock	R01885	6 ft.

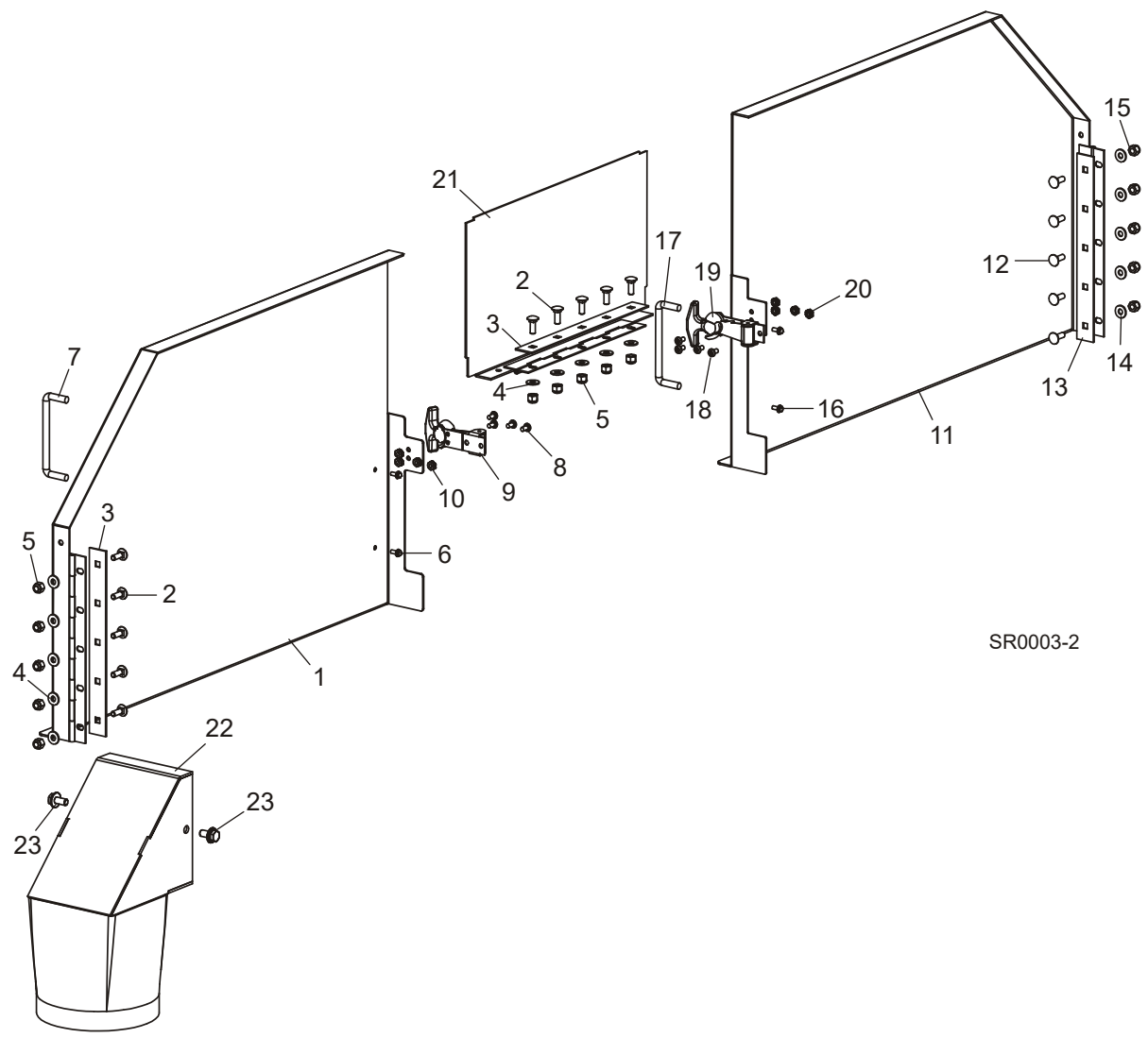
<sup>1</sup> If the water bottle cap keeps leaking, add this o-ring to the cap. Leave the existing o-ring installed.

<sup>2</sup> Replaced 014636 & 014100 after 9/19/2022 per ECN 38718.

# 4 Replacement Parts

## Covers & Sawdust Chute

### 4.4 Covers & Sawdust Chute



SR0003-2

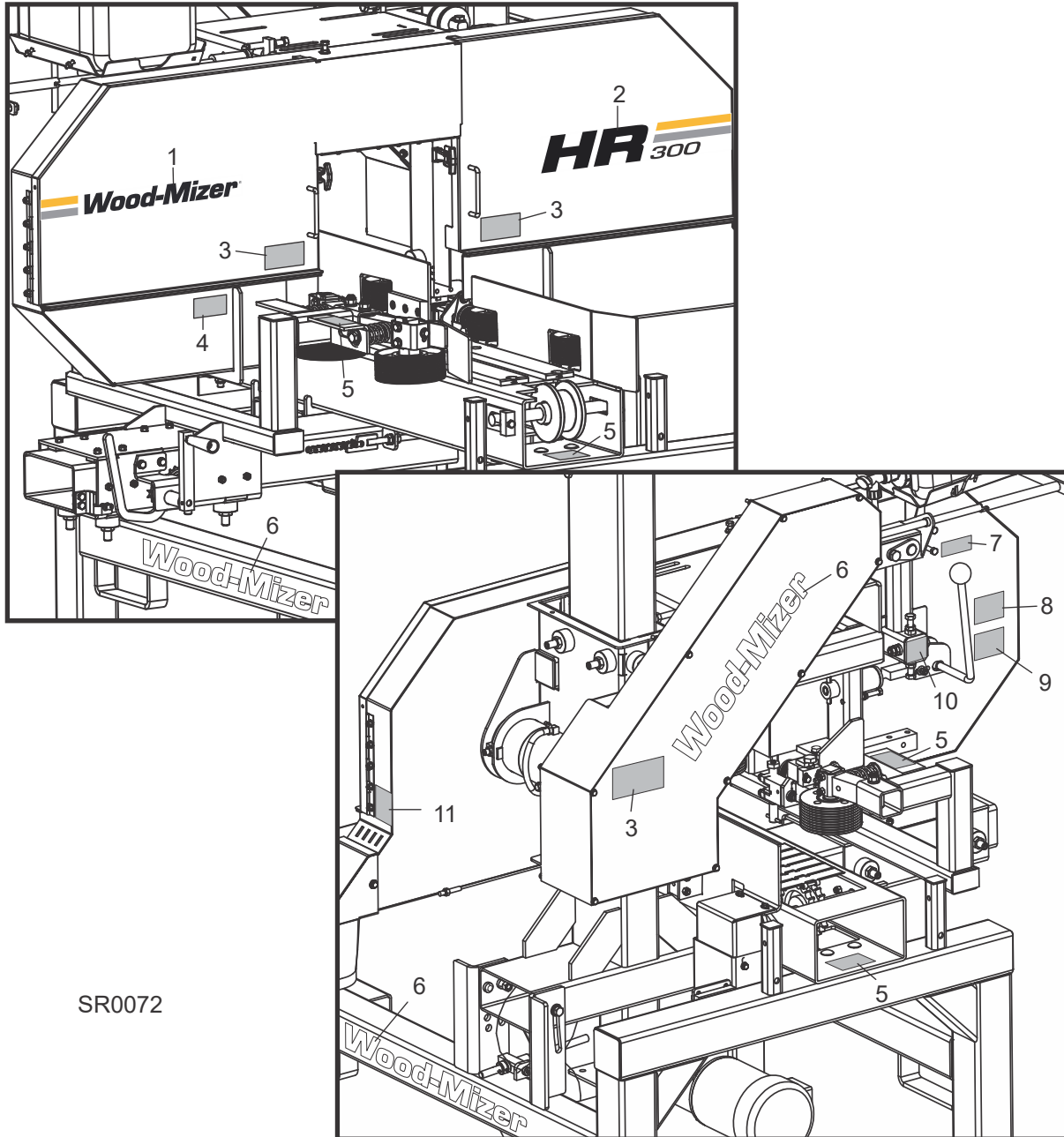
REF	DESCRIPTION (◆ Indicates Parts Available In Assemblies Only)	PART #	QTY.
	<b>COVER ASSEMBLY, SHR DRIVE SIDE</b>	036922	1
1	Door Weldment, SHR Drive Side	036879	1
2	Bolt, 1/4-20 x 3/4" Carriage	F05005-113	5
3	Plate, Hinge Backing	034251	1
4	Washer, 1/4" SAE Flat	F05011-11	5
5	Nut, 1/4-20 Nylon Lock	F05010-69	5
6	Bolt, #8-32 x 3/8" Self Tap	F05015-8	2
7	Handle, 4" w/Bolts	P08065	1
8	Screw, #10-24 x 3/8" Phillips	F05004-3	4
9	Latch, Flexible Draw	014829	1

10	Nut, #10-24 Keps	F05010-14	4	
	<b>COVER ASSEMBLY, SHR IDLE SIDE</b>	036921	1	
11	Door Weldment, SHR Drive Side	036879	1	
12	Bolt, 1/4-20 x 3/4" Carriage	F05005-113	5	
13	Plate, Hinge Backing	034251	1	
14	Washer, 1/4" SAE Flat	F05011-11	5	
15	Nut, 1/4-20 Nylon Lock	F05010-69	5	
16	Bolt, #8-32 x 3/8" Self Tap	F05015-8	2	
17	Handle, 4" w/Bolts	P08065	1	
18	Bolt, #10-24 x 3/8" Phillips	F05004-3	4	
19	Latch, Flexible Draw	014829	1	
20	Nut, #10-24 Keps	F05010-14	4	
21	<b>COVER WELDMENT, SHR MIDDLE</b>	036895	1	
22	<b>EXTENSION WELDMENT, SHR DUST CHUTE</b>	036943	1	
23	<b>BOLT, 5/16-18 X 3/4" HEX HEAD W/FLAT &amp; LOCK WASHER</b>	F05006-101	2	

# 4 Replacement Parts

## Saw Head Decals

### 4.5 Saw Head Decals



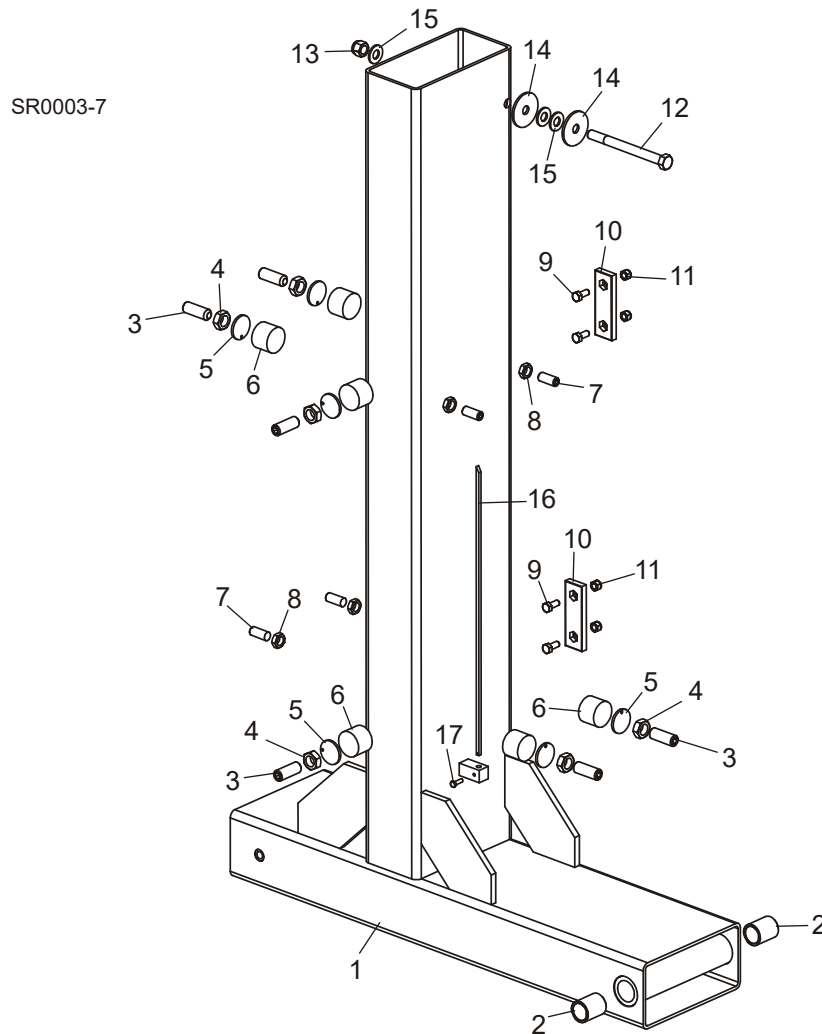
SR0072

REF	DESCRIPTION (◆ Indicates Parts Available In Assemblies Only)	PART #	QTY.
1	DECAL, BLADE COVER WOOD-MIZER LOGO	076273	1
2	DECAL, HR300 LOGO	076278	1
3	DECAL, MOVING PARTS DANGER	033254	3
4	DECAL, BLADE DANGER ARROW	S11752	1

5	DECAL, PINCH POINT WARNING	S12641	4	
6	DECAL, WOOD-MIZER LOGO 20.5" WHITE	065034	3	
7	DECAL, RE-SHARP	P12879	1	
8	DECAL, TENSION INFO	049368	1	
9	DECAL, TENSIONER WARNING	049367	1	
10	DECAL, BLADE ALIGNMENT	P11789	1	
11	DECAL, SAWDUST CHUTE WARNING	P11754	1	

## SECTION 5 UP/DOWN

### 5.1 Mast Assembly



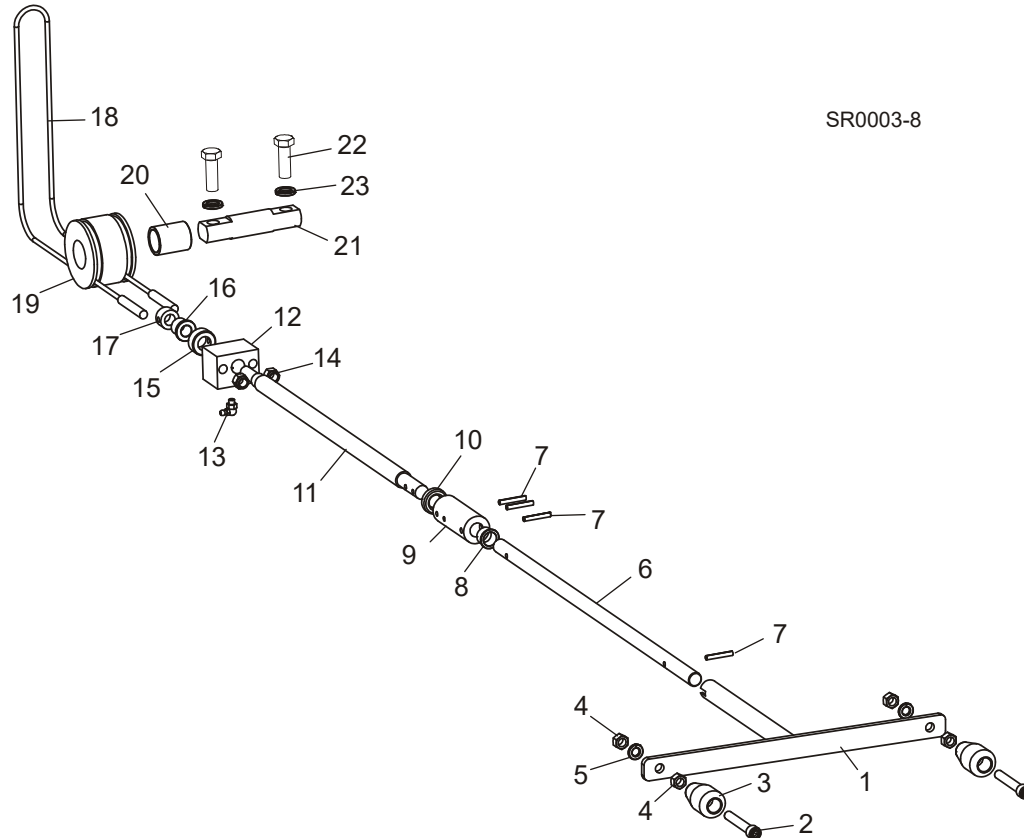
REF	DESCRIPTION (◆ Indicates Parts Available In Assemblies Only)	PART #	QTY.
1	UPRIGHT WELDMENT, SHR	036916	1
2	BUSHING, 1" X 1 1/4" X 1 1/2" BRONZE	P05041	2
3	SCREW, 5/8-18 X 1 3/4" SOCKET HEAD	F05009-27	6
4	NUT, 5/8-18 HEX JAM	F05010-11	6
5	PAD, NYLON BACKING	042432	6
6	PAD, ROUND NYLON	033098	6
7	BOLT, 1/2-13 X 1 1/4" BRASS TIP STAINLESS STEEL	F05008-18	4
8	NUT, 1/2-13 JAM	F05010-31	4
9	BOLT, 5/16-18 X 3/4" HEX HEAD GRADE 2	F05006-5	4

10	PADS, DELRIN UP/DOWN SLIDE	M04096	2	
11	NUT, 5/16-18 HEX NYLON LOCK	F05010-58	4	
12	BOLT, 1/2-13 X 5 1/2" HEX HEAD GRADE 5	F05008-28	1	
13	NUT, 1/2-13 HEX NYLON LOCK	F05010-8	1	
14	WASHER, 1/2" X 2" FENDER	F05011-38	2	
15	WASHER, 1/2" SAE FLAT	F05011-2	3	
16	POINTER, MH BLADE HEIGHT STRAIGHT	S22636	1	
17	SCREW, 10-24 X 5/8" HEX HEAD	F05004-18	1	

# 5 Replacement Parts

## Up/Down System Assembly

### 5.2 Up/Down System Assembly



SR0003-8

REF	DESCRIPTION (◆ Indicates Parts Available In Assemblies Only)	PART #	QTY.
	<b>HANDLE ASSEMBLY, UP/DOWN CRANK</b>	033251	1
1	Handle Weldment, Crank	033253	1
2	Screw, 3/8-16 x 3 1/2" Socket Head Cap	F05007-111	2
3	Knob, 3/8" Bore Tapered Plastic	060170	2
4	Nut, 3/8-16 Jam	F05010-29	4
5	Washer, 3/8" Split Lock	F05011-4	2
6	<b>SHAFT, HEAD CRANK, SHR</b>	036949	1
7	<b>PIN, 3/16" X 1 1/4" ROLL</b>	F05012-16	4
8	<b>BUSHING, .635" I.D. X 3/4" O.D. NYLON FLANGED</b>	P22478	1
9	<b>COUPLING, UP/DOWN CRANK</b>	S22476	1
10	<b>BEARING, 5/8" THRUST</b>	P04214	1
11	<b>ROD, HEIGHT ADJUSTMENT</b>	S22208	1
12	<b>BLOCK, HEIGHT ADJUSTMENT</b>	S22209	1
13	<b>FITTING, GREASE 90 DEG. 1/4-28</b>	P04108	1
14	<b>NUT, 3/8-16 HEX NYLON LOCK</b>	F05010-10	2
15	<b>COLLAR, 5/8" I.D. LOCK</b>	P05035	1
16	<b>BUSHING, 1/2" X 3/4" BRONZE FLANGED</b>	P22317	1



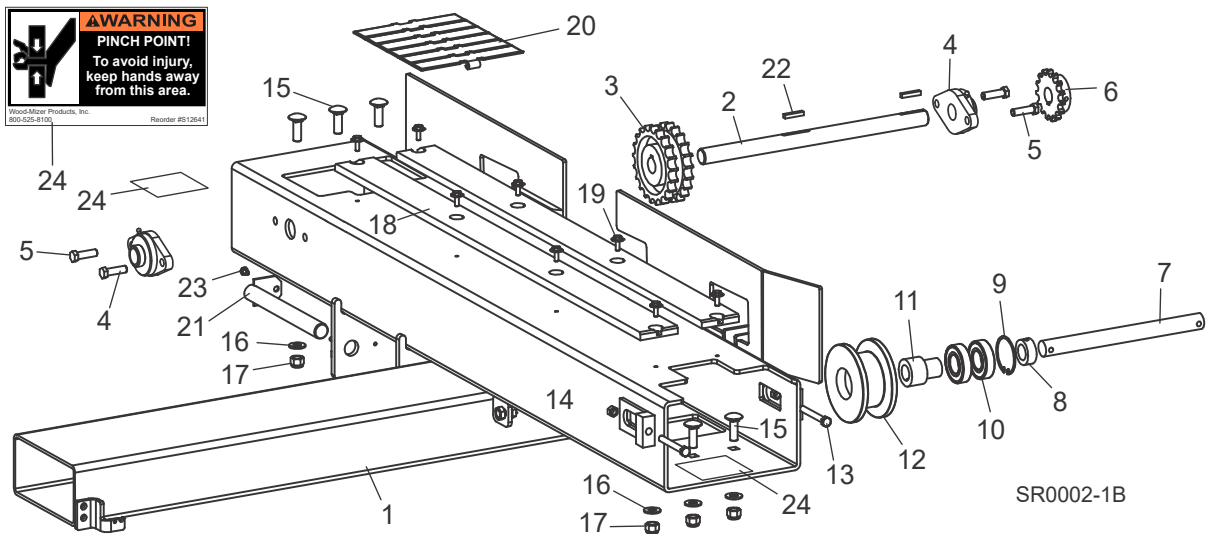
17	COLLAR, 1/2" I.D. X 7/8" O.D. LOCK	014820	1	
18	CABLE, UP/DOWN RESAW	S22307	1	
19	PULLEY, 2-GROOVED CABLE	S22205	1	
20	BUSHING, 1" X 1 1/4" X 1 1/2" BRONZE	P05041	1	
21	PIN, CABLE ROLLER	S22203	1	
22	BOLT, 1/2-13 X 1 1/2" HEX HEAD GRADE 5	F05008-33	2	
23	WASHER, 1/2" SPLIT LOCK	F05011-9	2	

# 6 Replacement Parts

## Feed Track Assembly

### SECTION 6 FEED

#### 6.1 Feed Track Assembly



REF	DESCRIPTION (◆ Indicates Parts Available In Assemblies Only)	PART #	QTY.
1	TUBE WELDMENT, DRIVE CHAIN	054349	1
2	SHAFT, CHAIN DRIVE	054372	1
3	SPROCKET, 21-22T FEED	P20202	1
4	BEARING, 1 FLANGED, VF2S 216	038124	2
5	BOLT, 3/8-16 X 1 1/4" HEX HEAD GRADE 5	F05007-123	4
6	SPROCKET, 50-15 X 1"	054172	1
7	SHAFT, MULTIHEAD FEED IDLER	S22425	1
8	COLLAR, 1" LOCK	038090	1
9	RING, 62MM IR RETAINING	F04254-12	1
10	BEARING, 6206-2NSE	P11035	2
11	BUSHING, FEED IDLER	S20286	1
12	PULLEY, FEED IDLER	S20282	1
13	BOLT, 3/8-16 X 3" HEX HEAD FULL THREAD	F05007-1	2
14	NUT, 3/8-16 HEX	F05010-1	2
15	BOLT, 1/2-13 X 1-1/2" CARRIAGE	F05008-150	6
16	WASHER, 1/2" SAE FLAT	F05011-2	6
17	NUT, 1/2-13 HEX NYLON LOCK	F05010-8	6
18	STRIP, 40-7/8 X 2-3/4" PRE-DRD TYVAR	054373	2
19	BOLT, 1/4-20 X 3/4" HEX HEAD W/CONICAL WASHER	F05005-134	8
20	CHAIN, 7-1/2" X 105" FLAT FEED TRACK	054374	1
21	POST WELDMENT, CONTROL	054427	1
22	KEY, 1/4SQ X1 3/8	017832	2

**Replacement Parts** **6**  
*Feed Track Assembly*

---

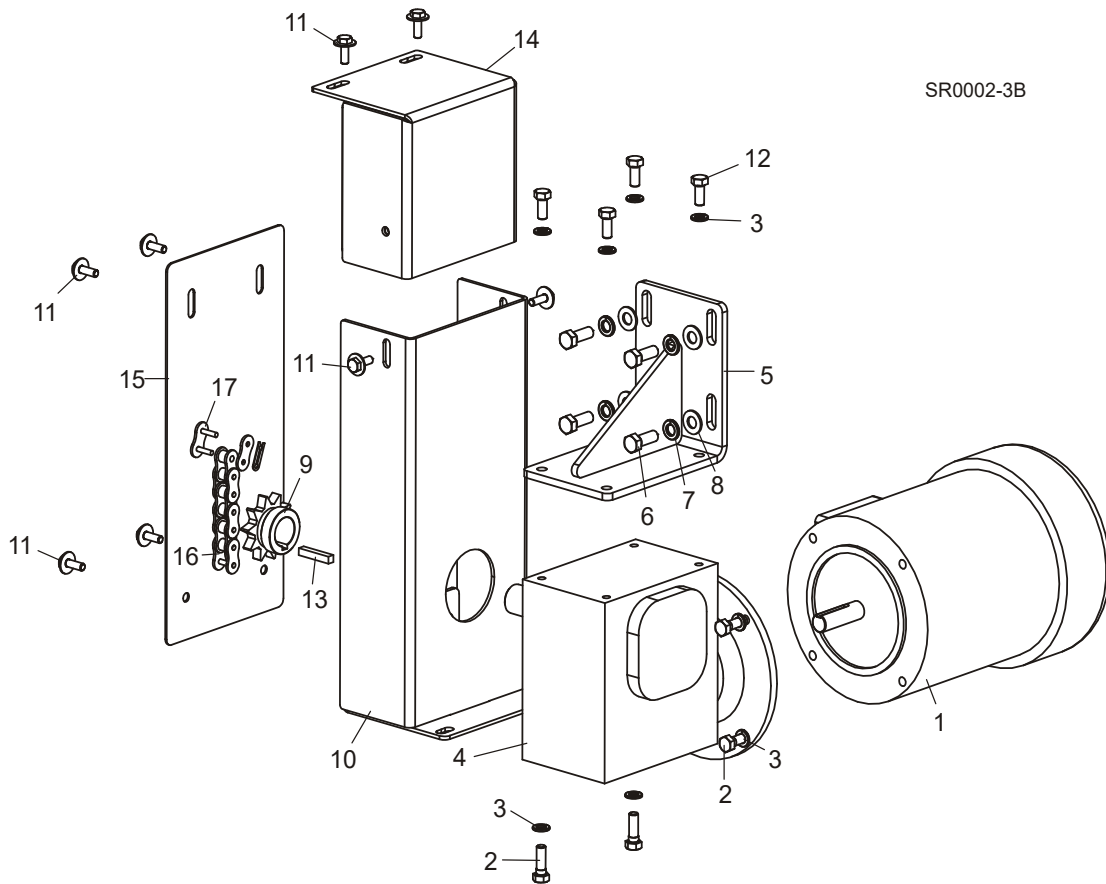
23	BOLT, 1/4-20 X 1/2" HEX HEAD	F05005-15	1	
24	DECAL, PINCH POINT WARNING	S12641	2	

# 6

## Replacement Parts

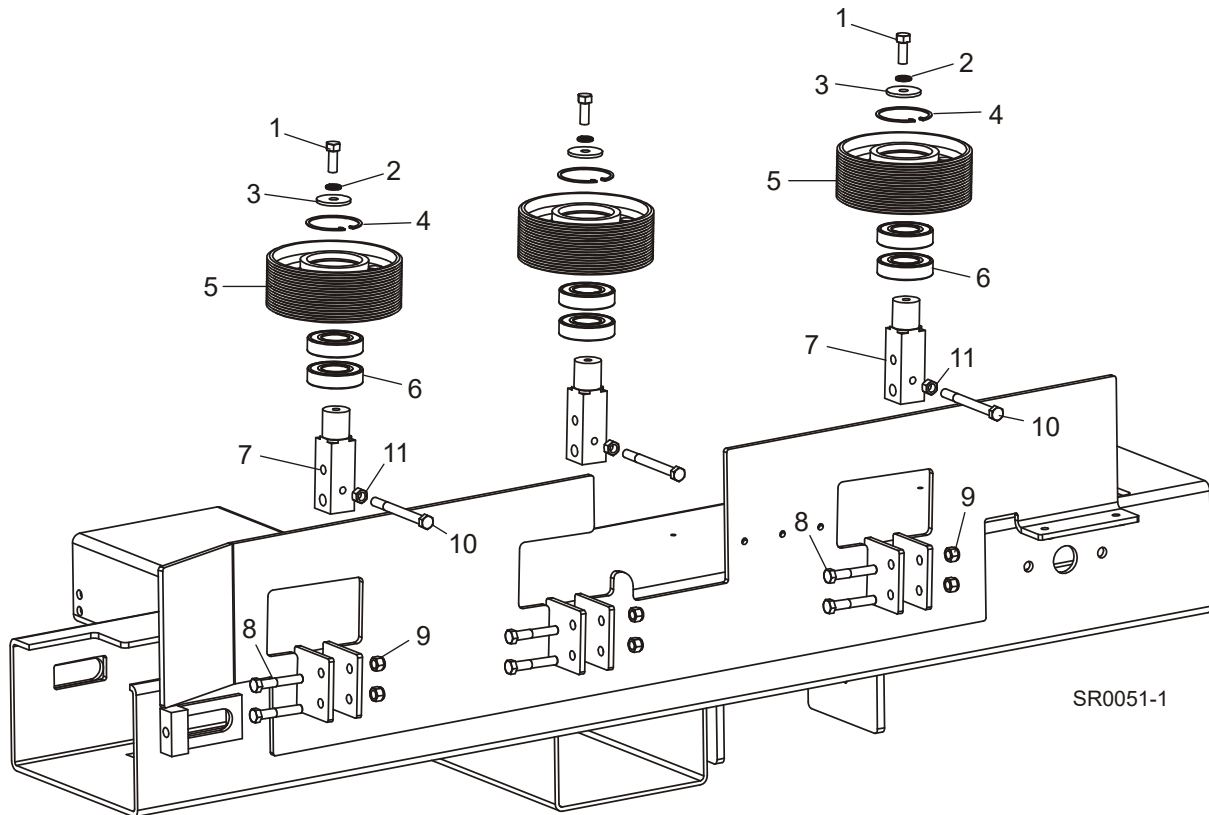
### Feed Motor Assembly

## 6.2 Feed Motor Assembly



REF	DESCRIPTION (◆ Indicates Parts Available In Assemblies Only)	PART #	QTY.
1	MOTOR, 1HP AC FEED	047486	1
2	BOLT, 5/16-18 X 1" HEX HEAD GRADE 2	F05006-1	6
3	WASHER, 5/16" SPLIT LOCK	F05011-13	10
4	GEARBOX, 90 DEG. BMQ220 RIGHT	054363	1
5	PLATE WELDMENT, GEARBOX MOUNT	054435	1
6	BOLT, 3/8-16 X 1" HEX HEAD GRADE 5	F05007-87	4
7	WASHER, 3/8" SPLIT LOCK	F05011-4	4
8	WASHER, 3/8" FLAT SAE	F05011-3	4
9	SPROCKET, 50BS10 X 1 MGR END	P21414	1
10	GUARD WELDMENT, LOWER	054451	1
11	BOLT, 1/4-20 X 3/4" HEX W/CONICAL WASHER HEAD	F05005-134	8
12	BOLT, 5/16-18 X 3/4" HEX HEAD	F05006-102	4
13	KEY, 1/4" SQUARE X 1 3/8"	017832	1
14	COVER WELDMENT, TOP DRIVE	054448	1
15	PLATE, FRONT COVER	054455	1
16	CHAIN, #50 X 28 3/4"	054484	1
17	LINK, #50 MASTER	P20208	1

### 6.3 Stationary Feed Rollers

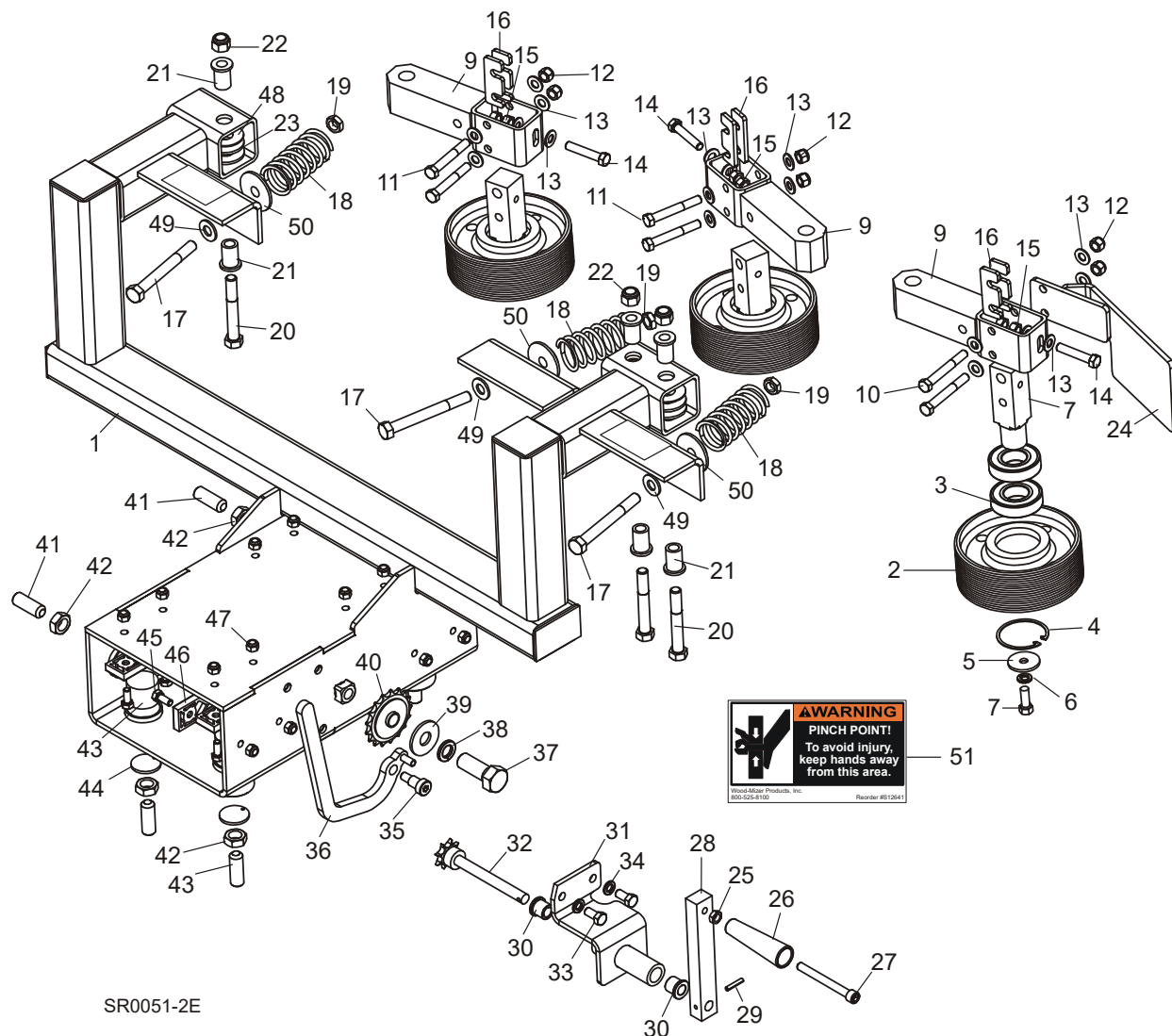


REF	DESCRIPTION (◆ Indicates Parts Available In Assemblies Only)	PART #	QTY.
	<b>ROLLER ASSEMBLY, STATIONARY FEED</b>	054368	3
1	Bolt, 3/8-16 x 1" Hex Head	F05007-7	1
2	Washer, 3/8" Split Lock	F05011-4	1
3	Washer, 3/8" ID x 1 1/2" OD x 1/8" Thick	F05011-104	1
4	Ring, 62mm Interior Retaining	F04254-12	1
5	Roller, Feed	054369	1
6	Bearing, 6206-2NSE	P11035	2
7	Shaft, Stationary Roller	054370	1
8	<b>BOLT, 3/8-16 X 2-1/4 HEX HEAD GRADE 5</b>	F05007-201	6
9	<b>NUT, 3/8-16 HEX NYLON LOCK</b>	F05010-10	6
10	<b>BOLT, 3/8-16 X 4" HEX HEAD FULL THREAD G5</b>	F05007-92	3
11	<b>NUT, 3/8-16 HEX</b>	F05010-1	3

# 6 Replacement Parts

## Pressure Roller Assembly

### 6.4 Pressure Roller Assembly



REF	DESCRIPTION (◆ Indicates Parts Available In Assemblies Only)	PART #	QTY.
	<b>ROLLER ASSEMBLY, PRESSURE</b>	054375	1
1	Frame Weldment, Pressure Roller	054376	1
	Roller Assembly, Stationary Feed	054368	3
2	Roller, Feed	054369	1
3	Bearing, 6206-2NSE	P11035	2
4	Ring, 62mm Inside Retaining	F04254-12	1
5	Washer, 3/8" ID x 1 1/2" OD x 1/8" Thick	F05011-104	1
6	Washer, 3/8" Split Lock	F05011-4	1

## Replacement Parts 6

*Pressure Roller Assembly*

7	Bolt, 3/8-16 x 1" Hex Head	F05007-7	1	
8	Shaft, Stationary Roller	054370	1	
9	Block Weldment, Roller Mount	054399	3	
10	Bolt, 3/8-16 x 3" Hex Head Grade 5	F05007-73	2	
11	Bolt, 3/8-16 x 2 3/4" Hex Head Grade 5	F05007-206	4	
12	Nut, 3/8-16 Hex Nylon Lock	F05010-10	6	
13	Washer, 3/8" Flat SAE	F05011-3	18	
14	Bolt, 3/8-16 x 2" Hex Head Full Thread	F05007-16	3	
15	Nut, 3/8-16 Hex	F05010-1	6	
16	Plate, Roller Shaft Spacer	038583	6	
17	Bolt, 1/2-13 x 4 1/2" Hex Head Grade 5	F05008-35	3	
18	Spring, 1-11/16" x 3-1/2" x .177" (MH100-300)	054462	3	
19	Nut, 1/2-13 Hex Jam	F05010-31	3	
20	Bolt, 1/2-13 x 3 1/2" Hex Head Grade 5	F05008-61	3	
21	Bushing, 1/2" x 3/4" x 1-1/4"	054403	6	
22	Nut, 1/2-13 Hex Nylon Lock	F05010-8	3	
23	Spacer, 1" x 1-3/4" x 1/8"	054423	6	
24	Shoe Weldment, Cant	054400	1	
	Crank Assembly, Roller Feed	054417	1	
25	Nut, 3/8-16 Hex Jam	F05010-29	1	
26	Handle, 3/8" Bore Tapered Plastic	060170	1	
27	Bolt, 3/8-16 x 3 1/2" Socket Head	F05007-111	1	
28	Block, Press Roller Handle	007346	1	
29	Pin, 3/16" x 1" Roll	F05012-11	1	
30	Bushing, 1/2" X 3/4" Bronze Flanged	P22317	2	
31	Feed Weldment, In/Out	054418	1	
32	Shaft Weldment, Roller Feed	054433	1	
33	Bolt, 3/8-16 x 3/4" Hex Head Grade 5	F05007-118	2	
34	Washer, 3/8" Split Lock	F05011-4	2	
35	Screw, 3/8-16 1/2x1/2 Socket Shoulder	F05008-63	1	
36	Stop Assembly, Pressure Roller	065695	1	
37	Bolt, 5/8-11 x 1-1/2" Hex Head Full Thread Grade 5	F05009-41	1	
38	Washer, 5/8" Split Lock	F05011-27	1	
39	Washer, 5/8" Standard Flat	F05011-40	1	
40	Sprocket, #40 Idler 17T 5/8" ID	P04333	1	
41	Screw, 5/8-18 x 1 3/4" Flat Point Socket Set	F05009-27	6	
42	Nut, 5/8-18 Hex Jam	F05010-11	6	
43	Pad, Round Nylon	033098	6	
44	Pad, Nylon Backing	042432	6	
45	Bolt, 5/16-18 x 3/4" Hex Head Grade 2	F05006-5	11	
46	Pads, Delrin Up/Down Slide	M04096	6	
47	Nut, 5/16-18 Hex Nylon Lock	F05010-58	12	
48	Spacer, 3/4" ID x 1 3/4" OD x 1/16" Thick	054467	3	

## **6** Replacement Parts

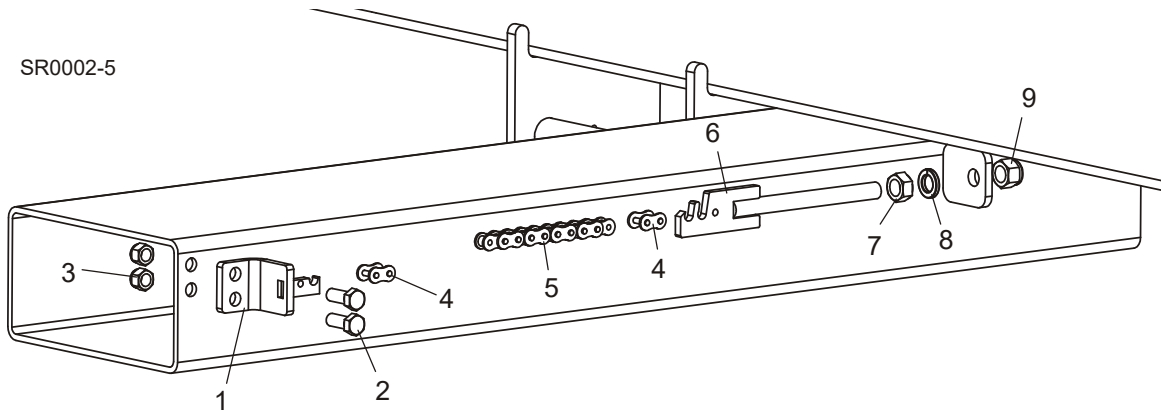
### *Pressure Roller Assembly*

---

<b>49</b>	Washer, 1/2" SAE Flat Grade 5	F05011-101	3	
<b>50</b>	Bushing, Spring	054457	3	
<b>51</b>	<b>DECAL, HAND PINCH POINT WARNING</b>	S12641	2	



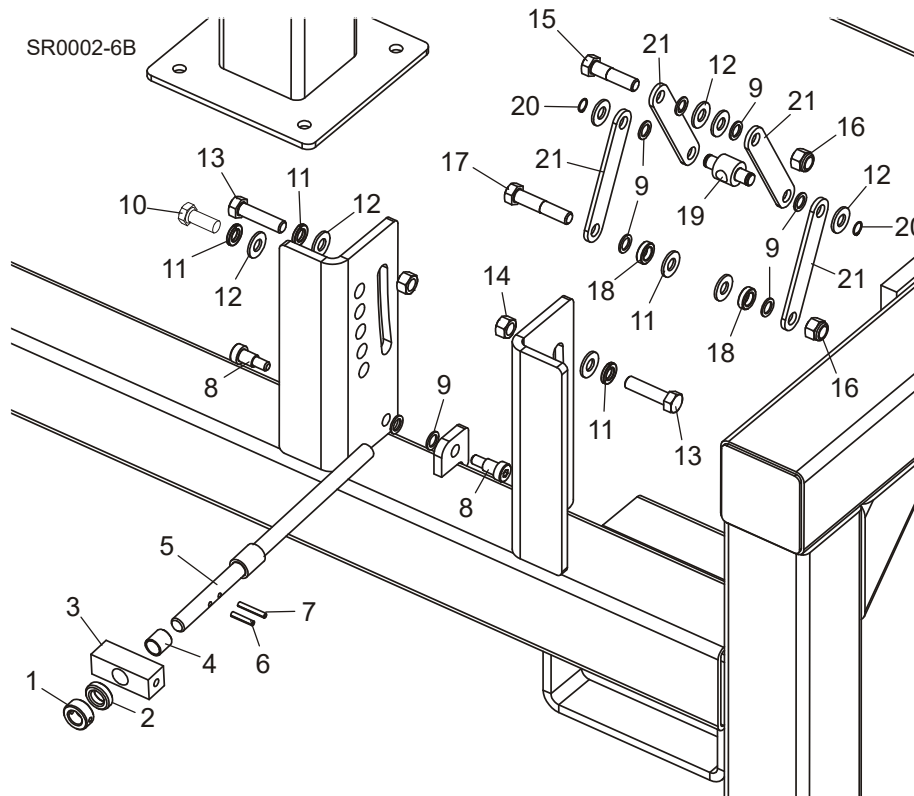
## 6.5 Pressure Roller Chain Assembly



REF	DESCRIPTION (◆ Indicates Parts Available In Assemblies Only)	PART #	QTY.
1	PLATE WELDMENT, CHAIN MOUNT	054414	1
2	BOLT, 3/8-16 X 1" HEX HEAD GRADE 5	F05007-87	2
3	NUT, 3/8-16 HEX NYLON LOCK	F05010-10	2
4	LINK, #40 MASTER	P04200	2
5	CHAIN, #40 X 21-1/2"	054465	1
6	TENSIONER WELDMENT, POWER FEED CHAIN	015721	1
7	NUT, 1/2-13 FREE HEX	F05010-35	1
8	WASHER, 1/2" SPLIT LOCK	F05011-9	1
9	NUT, 1/2-13 HEX NYLON LOCK	F05010-8	1

## SECTION 7 FRAME

### 7.1 Saw Head Tilt Assembly



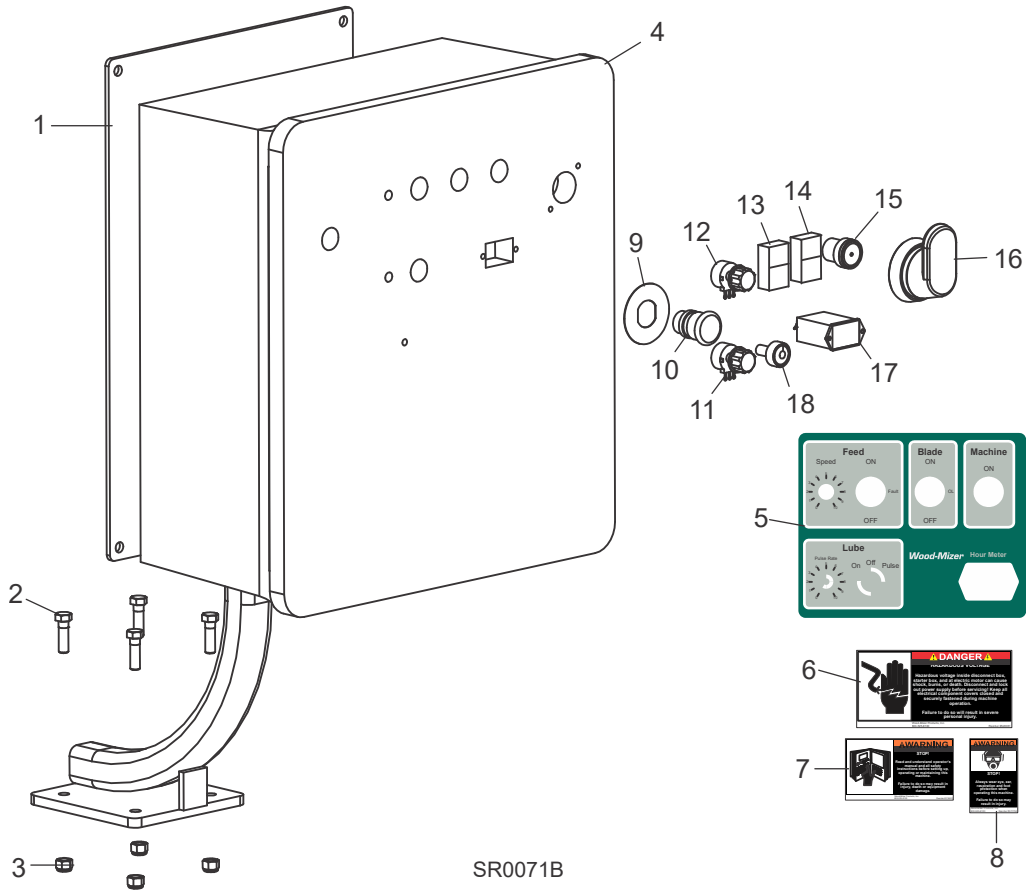
REF	DESCRIPTION (◆ Indicates Parts Available In Assemblies Only)	PART #	QTY.
	<b>SHAFT ASSEMBLY, SHR TILT</b>	038479	1
1	Collar, 5/8" I.D. x 1 1/8" O.D. Lock 3/16" thru.	016267	1
2	Bearing, 5/8" Thrust	P04214	1
3	Pivot, SHR Tilt	038470	1
4	Spacer, 5/8" I.D. x 3/4" O.D. x 3/4" Long Bronze	P09130	1
5	Shaft Weldment, SHR Tilt Adjustment	038477	1
6	Pin, 3/16" x 1" Roll	F05012-11	1
7	Pin, 3/16" x 1 1/4" Roll	F05012-16	1
8	<b>BOLT, 3/8-16 1/2 X 5/8" THREADED SHOULDER</b>	F05008-115	2
9	<b>WASHER, 1/2" X 3/4" X 1/16" NYLON</b>	P05251-1	8
10	<b>BOLT, 1/2-13 X 1 1/4" HEX HEAD GRADE 5</b>	F05008-37	1
11	<b>WASHER, 1/2" SPLIT LOCK</b>	F05011-9	3
12	<b>WASHER, 1/2" SAE FLAT</b>	F05011-2	9
13	<b>BOLT, 1/2-13 X 2" HEX HEAD FULL THREAD GRADE 5</b>	F05008-116	2
14	<b>NUT, 1/2-13 SWAGED HEX 2-WAY LOCK</b>	F05010-3	2

15	<b>BOLT, 1/2-13 X 2" HEX HEAD GRADE 5</b>	F05008-102	1	
16	<b>NUT, 1/2-13 HEX NYLON LOCK</b>	F05010-8	2	
17	<b>BOLT, 1/2-13 X 2 1/2" HEX HEAD GRADE 5</b>	F05008-74	1	
18	<b>SPACER, 1/2" I.D. X 7/8" O.D. X 1/4"</b>	041626	2	
19	<b>TRUNION, SHR TILT</b>	038475	1	
20	<b>RING, SHAFT 1/2" OR 3100-50 RETAINING</b>	F04254-18	2	
21	<b>LINK, SHR TILT ADJUSTMENT</b>	038474	4	

# 7 Replacement Parts

## Control Box & Harnesses

### 7.2 Control Box & Harnesses



SR0071B

REF	DESCRIPTION (◆ Indicates Parts Available In Assemblies Only)	PART #	QTY.
1	POST WELDMENT, CONTROL	054427	1
2	BOLT, 3/8-16 X 1 1/4" HEX HEAD GRADE 5	F05007-123	4
3	NUT, 3/8-16 HEX NYLON LOCK	F05010-10	4
	CONTROL BOX ASSEMBLY, HR300 230V 1PH 10HP (NOT SHOWN)	052480	1
	CONTROL BOX ASSEMBLY, HR300 460V 3PH 20HP (NOT SHOWN)	052476	1
	CONTROL BOX ASSEMBLY, HR300 380V 3PH 20HP (NOT SHOWN)	052772	1
	CONTROL BOX ASSEMBLY, HR300 230V 3PH 20HP (NOT SHOWN)	052478	1
	CONTROL BOX ASSEMBLY, HR300 460V 3PH 25HP (NOT SHOWN)	052472	1
	CONTROL BOX ASSEMBLY, HR300 230V 3PH 25HP (NOT SHOWN)	052474	1
4	Enclosure, Control Box	052494	1

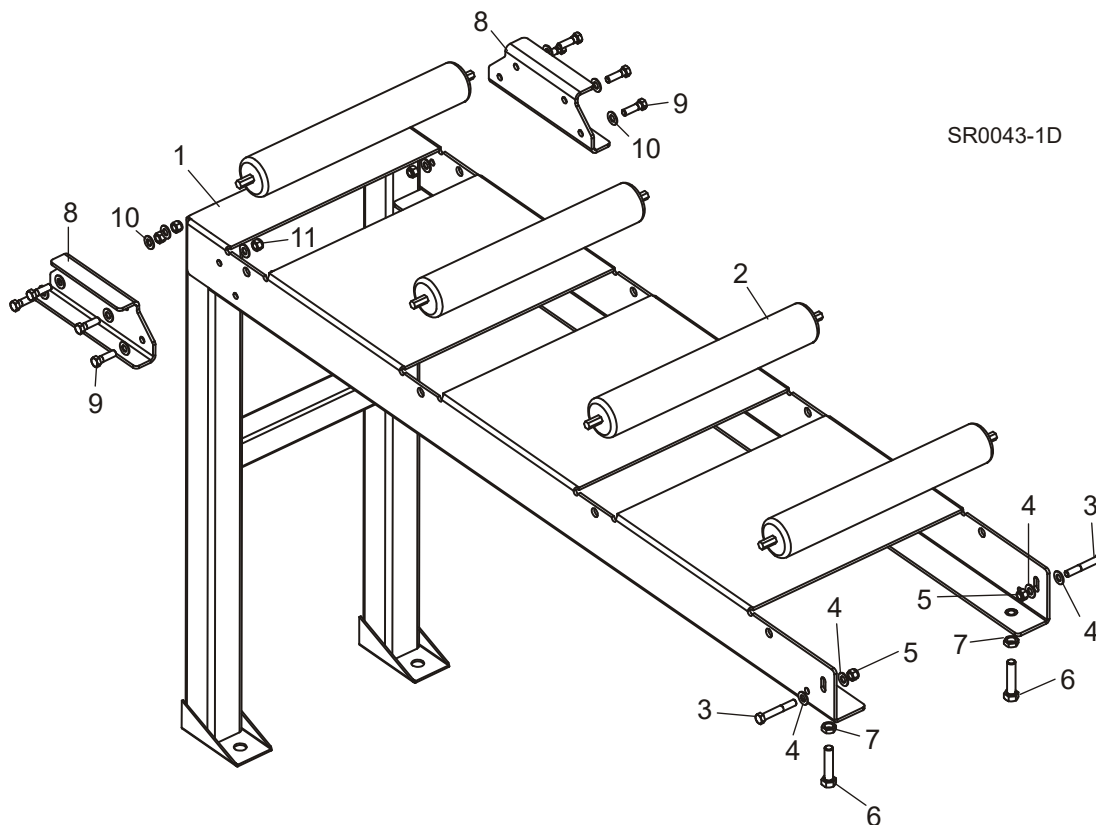
	Insert Assembly, HR300 460V 3Ph 25HP	052471	1	
	Insert Assembly, HR300 230V 3Ph 25HP	052473	1	
	Insert Assembly, HR300 460V 3Ph 20HP	052475	1	
	Insert Assembly, HR300 380V 3Ph 20HP	052771	1	
	Insert Assembly, HR300 230V 3Ph 20HP	052477	1	
	Insert Assembly, HR300 230V 1Ph 10HP	052479	1	
	Harness Assembly, Feed Motor	052486-1	1	
	Harness Assembly, Brake	052488	1	
	Harness Assembly, Blade Motor (380/460V 3-Phase Only)	052492	1	
	Harness Assembly, Blade Motor (230V 3-Phase Only)	052520	1	
	Harness Assembly, Blade Motor (230V 1-Phase Only)	052523	1	
<b>5</b>	Decal, Control Box	052444	1	
<b>6</b>	Decal, Electrical Hazard Danger	S20061	1	
<b>7</b>	Decal, Read Manual Warning	016402	1	
<b>8</b>	Decal, Eye/Ear Protection Warning	S11753	1	
<b>9</b>	Legend, E-Stop Round Yellow	050992	1	
<b>10</b>	Switch, E-Stop Complete Push-Pull XB5	052497	1	
	Contact, NC ZBE102	050540	1	
<b>11</b>	Potentiometer Assembly, Lube-Mizer Control (LMS Option Only)	024590	1	
<b>12</b>	Potentiometer Assembly, 1K SHR Feed Control	052451	1	
<b>13</b>	Switch, 2 PBw/Pilot Green Flush Red Extend	052499	1	
	Switch Body, 22mm Red LED 1NO 1NC 24V XB5	052498	1	
<b>14</b>	Switch, 2 PBw/Pilot Green Flush Red Extend	052499	1	
	Switch Body, 22mm Red LED 1NO 1NC 24V XB5	052498	1	
	Contact, NC ZBE102	050540	2	
<b>15</b>	Switch, PB Green Flush Illum ZB5	052503	1	
	Switch Body, 22mm Grn LED 1NO 24V XB5	052502	1	
<b>16</b>	Disconnect, 100Amp 3P Non-Fused 6mm	050906-1	1	
	Operator, Red/Yellow Pistol Grip 6mm	050907-1	1	
	Shaft, Pistol Grip Disconnect 290mm x 6mm	050908-1	1	
<b>17</b>	Hour Meter, 12 Volt DC	015401	1	
<b>18</b>	Switch Body, 22mm Green LED 2NO 24V (LMS Option Only)	052612	1	
	Switch Head, 22mm Illum Green Selector (LMS Option Only)	052613	1	
See Electrical Information Section in <a href="#">Operator's Manual</a> for a complete list of electrical components				

# 8 Replacement Parts

## End Table (Optional)

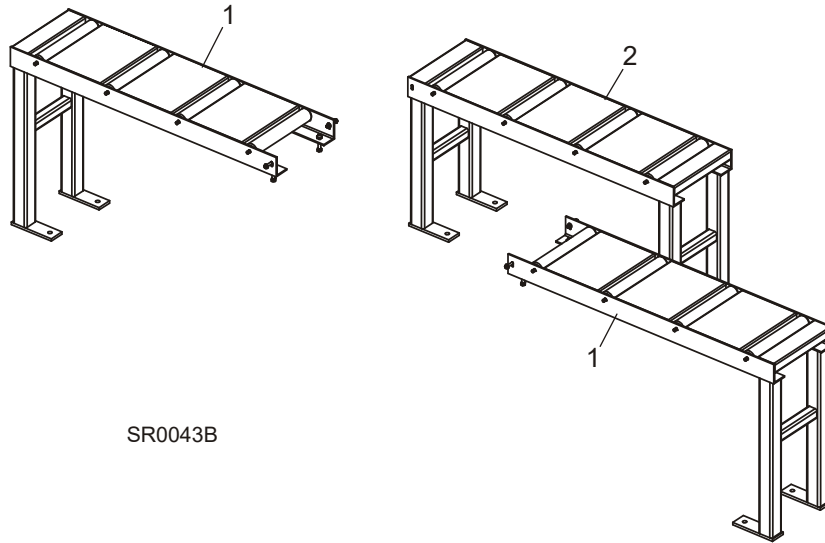
### SECTION 8 OPTIONS

#### 8.1 End Table (Optional)



REF	DESCRIPTION (◆ Indicates Parts Available In Assemblies Only)	PART #	QTY.
	<b>TABLE ASSEMBLY, END</b>	054404	2
1	Table Weldment, End	054405	1
2	Roller, 2.5" OD x 16"	054412	4
3	Bolt, 3/8-16 X 2 1/2" Hex Head Grade 2	F05007-47	2
4	Washer, 3/8" Flat SAE	F05011-3	4
5	Nut, 3/8-16 Hex Nylon Lock	F05010-10	2
6	Bolt, 1/2-13 X 2 1/4" Hex Head Full Thread	F05008-27	2
7	Nut, 1/2-13 Hex Jam	F05010-31	2
	<b>CONNECTOR KIT, SHR TABLE</b>	003622	1
8	Plate, SHR Table Connector	003621	2
9	Bolt, 3/8-16 x 1 1/4" Hex Head Grade 5	F05007-123	8
10	Washer, 3/8" SAE Flat	F05011-3	16
11	Nut, 3/8-16 Hex Nylon Lock	F05010-10	8

## 8.2 Feed Tables (Optional)

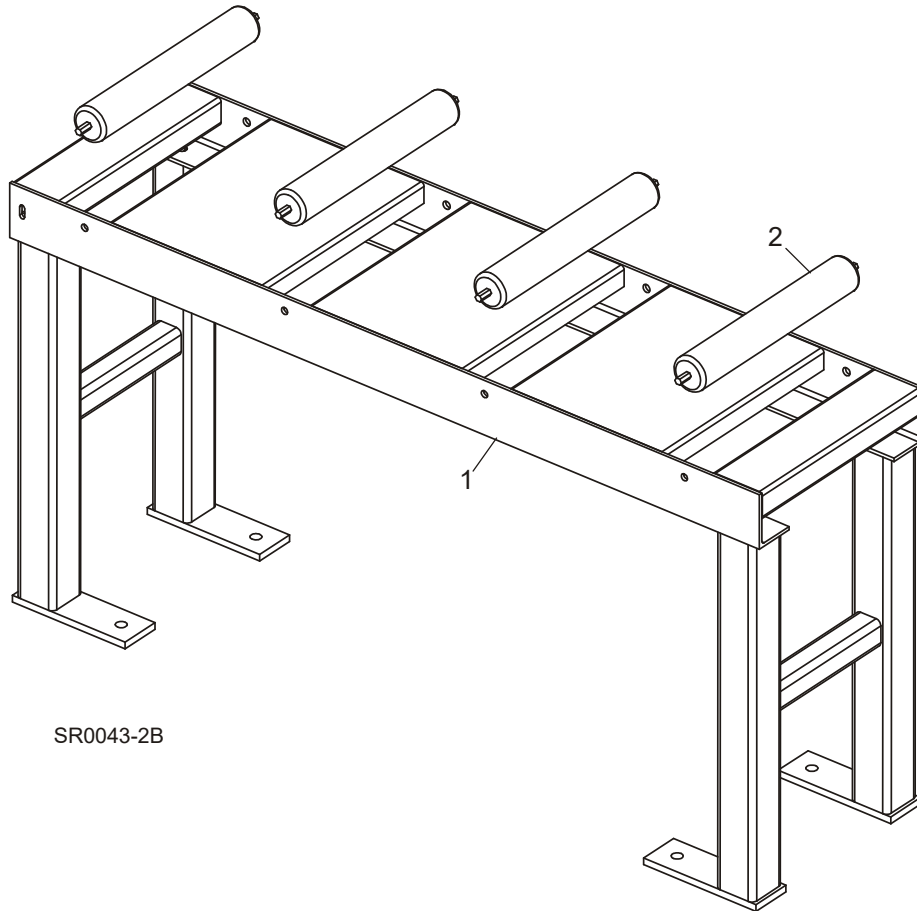


SR0043B

REF	DESCRIPTION (◆ Indicates Parts Available In Assemblies Only)	PART #	QTY.
	<b>TABLE ASSEMBLY, OPTIONAL FEED</b>	054464	1
1	End Table Parts ( <a href="#">See Section 8.1</a> )		
2	Side Table Parts ( <a href="#">See Section 8.3</a> )		

**8** Replacement Parts  
*Side Table (Optional)*

**8.3 Side Table (Optional)**

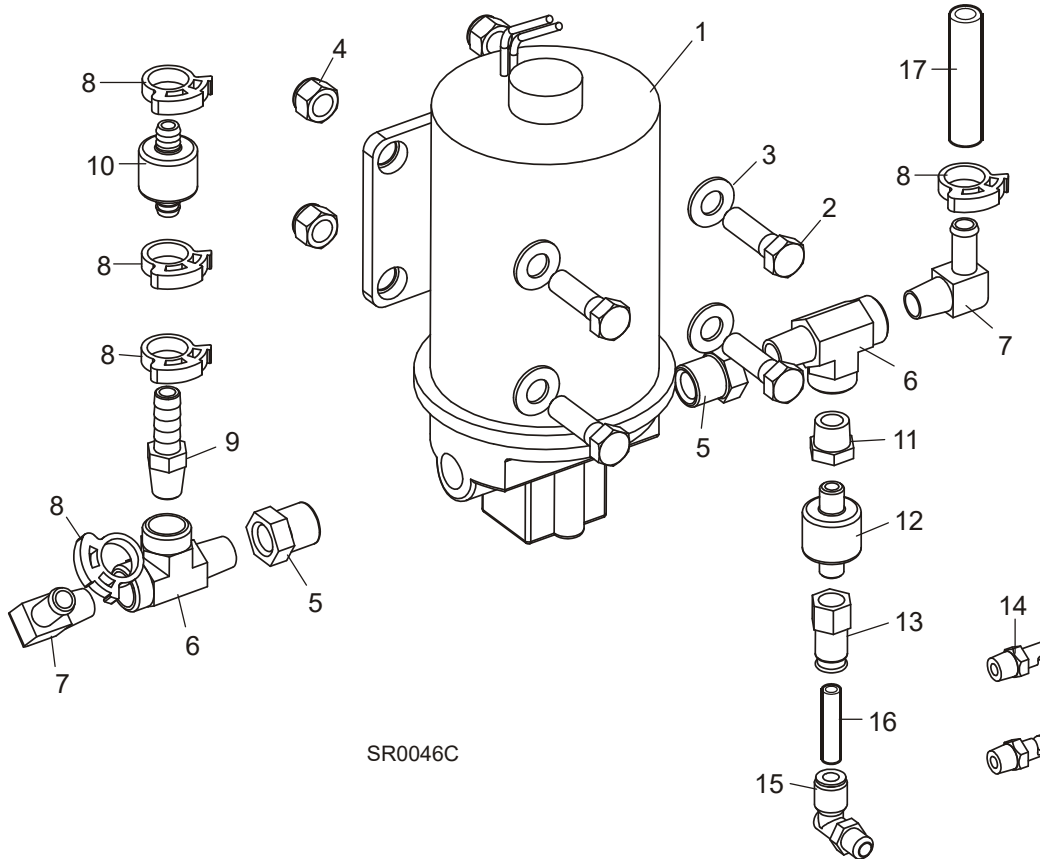


SR0043-2B

REF	DESCRIPTION (◆ Indicates Parts Available In Assemblies Only)	PART #	QTY.	
	<b>TABLE ASSEMBLY, SIDE</b>	054442	1	
1	Table Weldment, Side	054443	1	
2	Roller, 2.5 OD x16	054412	4	



### 8.4 Lube-Mizer Pump Assembly (Optional)



SR0046C

REF	DESCRIPTION (◆ Indicates Parts Available In Assemblies Only)	PART #	QTY.
	<b>LUBE ADDITIVE, CASE 4 60 OZ. BOTTLES</b>	ADD-1	1
	<b>LUBE-MIZER OPTION, FIELD-INSTALLED SHR</b>	LMS-SHR	1
	Pump Assembly, SHR LubeMizer	038563	1
1	Pump Assembly, Lube	050029	1
2	Bolt, 3/8-16 x 1 1/4" Hex Head Grade 5	F05007-123	4
3	Washer, 3/8" Flat SAE	F05011-3	8
4	Nut, 3/8-16 Hex Nylon Lock	F05010-10	4
5	Fitting, 3/8" NPT-1/4" NPT Reducer	015490	2
6	Fitting, 1/4" NPT x 1/4" JIC Male Run Tee	P09141	2
7	Fitting, 1/4" NPT x 3/8" Hose Barb, Elbow	016330	2
8	Clamp, Single Snap Grip #38	016845	5
9	Fitting, 1/4" NPT-3/8" Barb	014685	1
10	Valve, 3/8" Barb 6PSI Check	033448	1
11	Reducer, 1/4" NPT - 1/8" NPT	P22680	1
12	Valve, 1/8" NPT 3PSI Check	033449	1
13	Fitting, 1/4" TB x 1/8" NPT Male Air	033450	1

**8****Replacement Parts***Lube-Mizer Pump Assembly (Optional)*

---

<b>14</b>	Fitting, Blade Lube Spray	033479	2	
<b>15</b>	Fitting, 1/4" MPT x 1/4" Tube Swivel Elbow	P09736	1	
<b>16</b>	Tubing, 1/4" Air	R01869	2 ft.	
<b>17</b>	Tubing, 3/8" ID Flex PVC Braided	R01885-1	2.75 ft.	
	Control Assembly, SHR LubeMizer	052615	1	

# INDEX

---

## B

blade drive 3-1

blade guides  
drive side 2-4  
idle side 2-1

blade motor (10HP) 3-6

blade motor (20HP/25HP) 3-5

---

## C

control box & harnesses 7-3

covers & sawdust chute 4-5

---

## D

drive belt covers and brake solenoid 3-3

---

## E

end table (optional) 8-1

---

## F

feed motor assembly 6-3

feed tables (optional) 8-2

feed track 6-1

---

## H

how to use parts list 1-1

---

---

## I

idle blade wheel 3-7

---

## L

laser guides housing 4-1

lubemizer pump 8-4

---

## M

mast assembly 5-1

middle throat screw 4-3

---

## P

pressure roller assembly 6-5

pressure roller chain 6-8

---

## S

saw head decals 4-7

saw head tilt assembly 7-1

side table (optional) 8-3

stationary feed rollers 6-4

---

## U

up/down system 5-3

---

## W

water lube 4-4

---